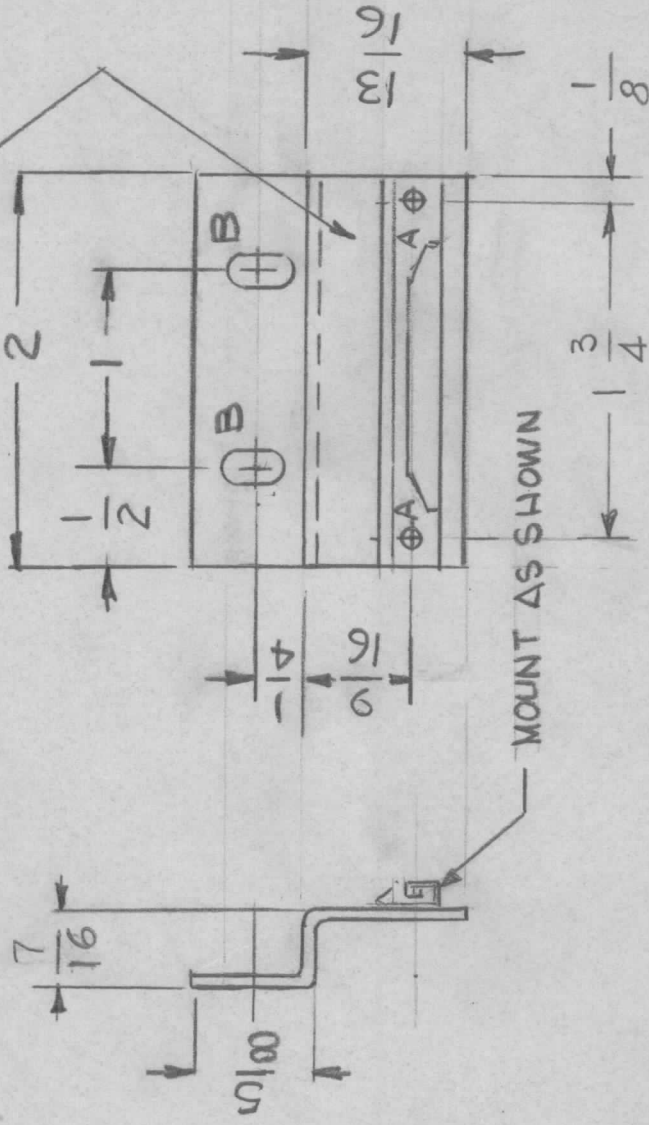


APPLICATION

REVISIONS

QTY	MODEL USED ON	ASS'Y NO.	LTR	DESCRIPTION	DATE	E.M.N.NO	DRAFT	CHKD	APPD
1	ATSA-3			ORIGINAL RELEASE FOR PRODUCTION	1-13-78				

MARK TMC P/NO. 1/8 HIGH
GOTHIC W/LATEST REV. LETTER



HOLES:

UNLESS OTHERWISE SPECIFIED:

1. USE MATERIAL THICKNESS FOR MAXIMUM RADIUS ON ALL BENDS.
2. ALL ANGULAR BENDS 90 DEGREES.
3. REMOVE ALL BURRS AND SHARP EDGES.
4. MOUNT INSERTS AFTER FINISHING.

A. .067 DIA 2REQ.

B- 11/64 X 3/8 SLOT 2REQ.

2	2	EY 100-4	RIVET		
1	1	CU157	RETAINER, PC.BD.		
REQ'D	ITEM	PART NUMBER	DESCRIPTION	SYM.	

LIST OF MATERIAL

FINAL APPROVAL	DATE	THE TECHNICAL MATERIEL CORP.			
MECH. DES.	DATE	MAMARONECK, NEW YORK			
ELECT. DES.	DATE	BRACKET, MTG. PC. BOARD			
CHECKED	DATE				
DRAWN	DATE				

MATERIAL 064THC
AL 5052-H32

FINISH S404

VEL IRIDITE

NOTICE TO PERSONS RECEIVING THIS DRAWING

THE TECHNICAL MATERIEL CORPORATION claims proprietary right in the material disclosed hereon. This drawing is issued in confidence for engineering information only and may not be reproduced or used to manufacture anything shown hereon without permission from THE TECHNICAL MATERIEL CORPORATION to the user. This drawing is loaned for mutual assistance and is subject to recall at any time.

SIZE	CODE IDENT. NO.	DWG NO.	ISSUE
A	82679	MS 6778	Ø
SCALE	1:1	SHEET	OF