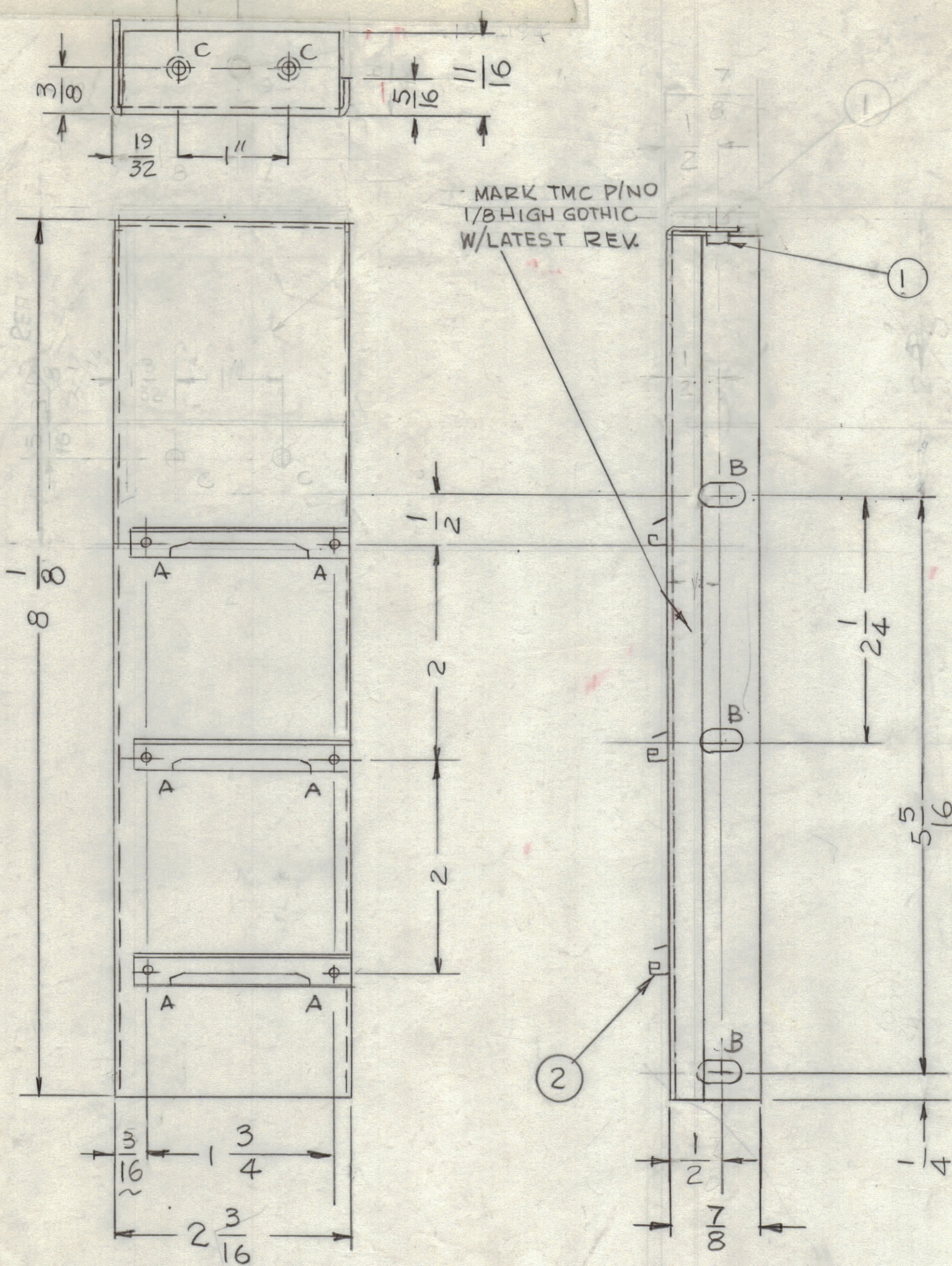


REVISIONS					
ZONE	LTR	DESCRIPTION	DATE	E.M.N.NO	APPD
	0	ORIGINAL RELEASE FOR PRODUCTION	1-13-78		



- HOLES •
- A - .067 DIA 4 REQ 6
 - B - 3/16 x 3/8 SLOT 1 3
 - C - .191-.194 DIA 11 2

QTY. REQ.	ITEM	PART NO.	DESCRIPTION	SYMBOL
4	3	EY100-4	RIVET	
3	2	CU157	RETAINER P.C. BOARD	
2	1	NT1290632-4	NUT, ROUND	

THE TECHNICAL MATERIEL CORP.
MAMARONECK, NEW YORK

BRACKET, MOUNTING
P.C. BD

1	ATSA-3	ASS'Y NO.
QTY / UNIT	MODEL USED ON	CODE
APPLICATION		

UNLESS OTHERWISE SPECIFIED DIMENSIONS ARE IN INCHES AND INCLUDE CHEMICALLY APPLIED OR PLATED FINISHES	FINAL APPROVAL <i>GDL</i>	DATE 1/5/78
TOLERANCES ON	MECH. DES.	DATE
DECIMALS .X ± .05	ELECT. DES.	DATE
.XX ± .01	CHECKED	DATE
.XXX ± .005	ANGLES ± 0°-30'	DATE
MATERIAL 064THK AL 5052-H32	DRAWN G.D.L.	DATE 2-7-77
FINISH 5404 YEL. IRIDITE		

NOTICE TO PERSONS RECEIVING THIS DRAWING

THE TECHNICAL MATERIEL CORPORATION claims proprietary right in the material disclosed hereon. This drawing is issued in confidence for engineering information only and may not be reproduced or used to manufacture anything shown hereon without permission from THE TECHNICAL MATERIEL CORPORATION to the user. This drawing is loaned for mutual assistance and is subject to recall at any time.

SIZE	CODE IDENT. NO.	DWG NO.	ISSUE
C	82679	MS 6777	0
SCALE	SHEET		OF