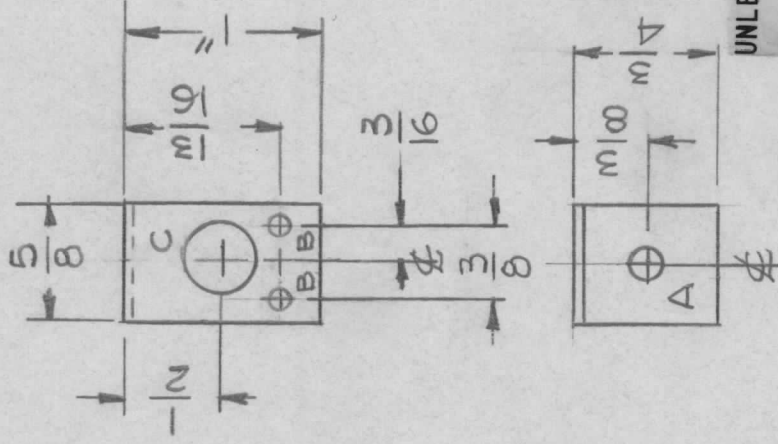


## APPLICATION

## REVISIONS

QTY	MODEL USED ON	ASSY NO.	LTR	DESCRIPTION	DATE	E.M.N.NO	DRAFT	CHKD	APPD
1	TMAG-1K		Ø	ORIGINAL RELEASE FOR PRODUCTION	5-13-77				



HOLE:

A - 11/64 DIA

B - 7/64 DIA 2REQ

C - 3/8 DIA

UNLESS OTHERWISE SPECIFIED:

1. USE MATERIAL THICKNESS FOR MAXIMUM RADIUS ON ALL BENDS.
2. ALL ANGULAR BENDS 90 DEGREES.
3. REMOVE ALL BURRS AND SHARP EDGES.
4. MOUNT INSERTS AFTER FINISHING.

UNLESS OTHERWISE SPECIFIED DIMENSIONS ARE IN INCHES AND INCLUDE CHEMICALLY APPLIED OR PLATED FINISHES		REQ'D	ITEM	PART NUMBER	DESCRIPTION	SYM.
DECIMALS	FRACTIONS	LIST OF MATERIAL				
.X ± .05	TOLS. 1/64	FINAL APPROVAL	88		THE TECHNICAL MATERIEL CORP.	
.XX ± .01	ANGLES 0°-30'	MECH. DES.			MAMARONECK, NEW YORK	
.XXX ± .005		ELECT. DES.			BRACKET MTG SENSITIVE SWITCH	
MATERIAL .064 THK AL 5052-H32		CHECKED				
FINISH S404		DRAWN	GDL			
YEL-IRIDITE						
NOTICE TO PERSONS RECEIVING THIS DRAWING		DATE	5/11/77			
THE TECHNICAL MATERIEL CORPORATION claims proprietary right in the material disclosed hereon. This drawing is issued in confidence for engineering information only and may not be reproduced or used to manufacture anything shown hereon without permission from THE TECHNICAL MATERIEL CORPORATION to the user. This drawing is loaned for mutual assistance and is subject to recall at any time.		DATE				
		DATE				
		DATE				
		DATE	1-25-77			
SIZE A	CODE IDENT. NO. 82679	DWG NO. MS 6775	ISSUE			
SCALE 1:1			SHEET			OF