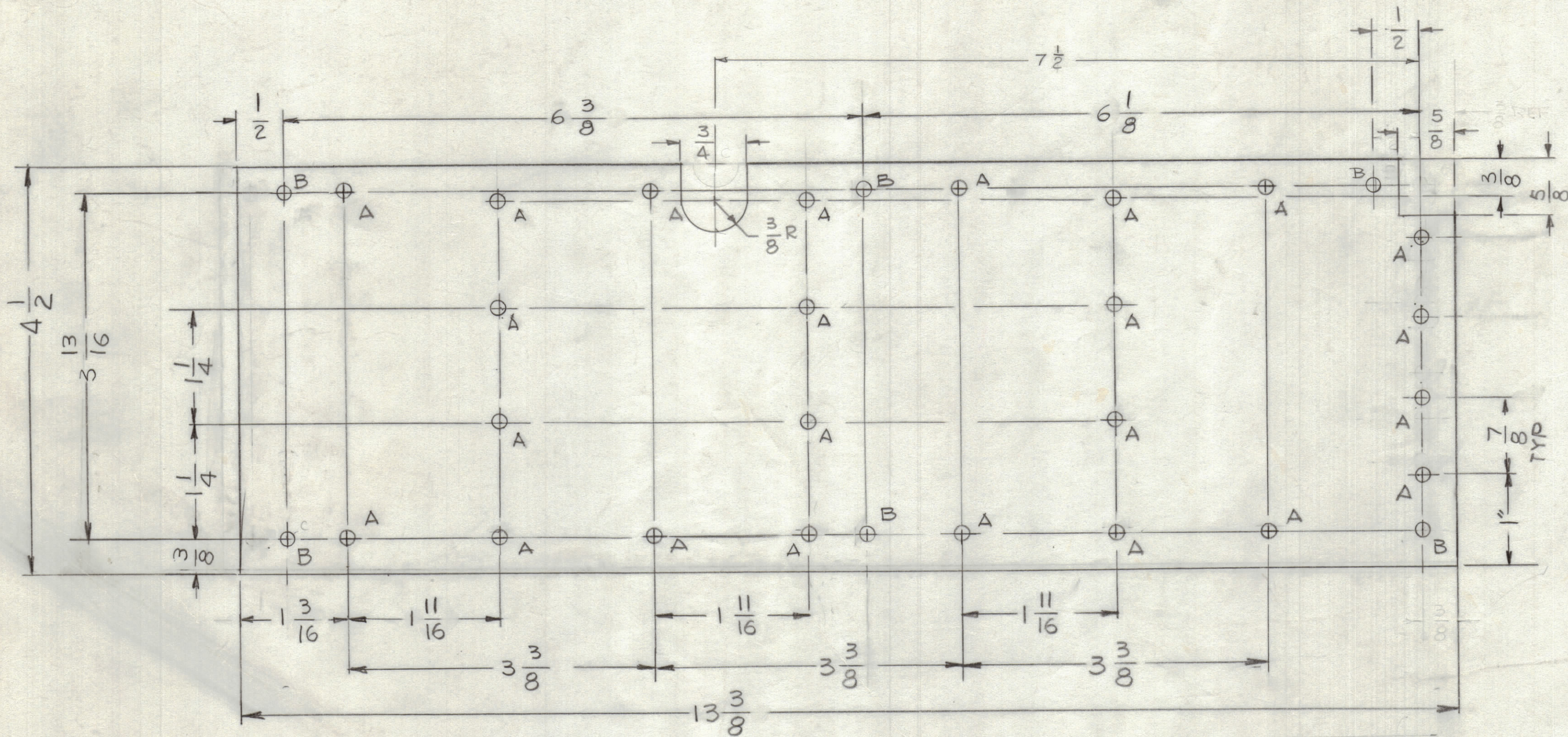


REVISIONS						
ZONE	LTR	DESCRIPTION	DATE	E.M.N.NO	DRAFT	CHKD APPD
	X <sub>1</sub>	ADDED "B" HOLE	11-15-77		PH	
	X <sub>2</sub>	ADD "C" HOLE AND NOTCH	1-3-78		PH	
	Ø	ORIGINAL RELEASE FOR PRODUCTION	1-17-78		PH	*
2C 3C	A	ON THE RIGHT SIDE NOTCH WAS 3/8 X 3/8 & NOTCH 3/4 X 3/4 (3/8 R) WAS 1/2 DIA.	8-31-79	21705	GDL	



HOLES :

- A - 11/64 DIA 24 REQ
- B - 15/64 DIA 6 REQ
- C - 1/2 DIA 1 REQ

2	ATU -1K (8)	AXS227
1	ATU -1KC	
QTY / UNIT	MODEL USED ON	ASS'Y NO.
APPLICATION		
CODE		

NOTICE TO PERSONS RECEIVING THIS DRAWING  
 THE TECHNICAL MATERIEL CORPORATION claims proprietary right in the material disclosed hereon. This drawing is issued in confidence for engineering information only and may not be reproduced or used to manufacture anything shown hereon without permission from THE TECHNICAL MATERIEL CORPORATION to the user. This drawing is loaned for mutual assistance and is subject to recall at any time.

UNLESS OTHERWISE SPECIFIED DIMENSIONS ARE IN INCHES AND INCLUDE CHEMICALLY APPLIED OR PLATED FINISHES

TOLERANCES ON

DECIMALS	FRACTIONS
.X ± .05	± 1/64
.XX ± .01	ANGLES
.XXX ± .005	± 0° -30'

MATERIAL .081 THK  
 ALUM 5052-H32

FINISH S404  
 YEL IRIDITE

QTY. REQ.	ITEM	PART NO.	DESCRIPTION	SYMBOL
LIST OF MATERIAL				
THE TECHNICAL MATERIEL CORP. MAMARONECK, NEW YORK				
PLATE, MTG CAPACITORS				
SIZE	CODE IDENT. NO.	DWG NO.	ISSUE	
C	82679	MS 6765	A	
SCALE 1:1			SHEET	OF

FINAL APPROVAL	DATE
	11/17/78
MECH. DES.	DATE
	1-17-78
ELECT. DES.	DATE
CHECKED	DATE
DRAWN	DATE
G.D.L.	12-13-76