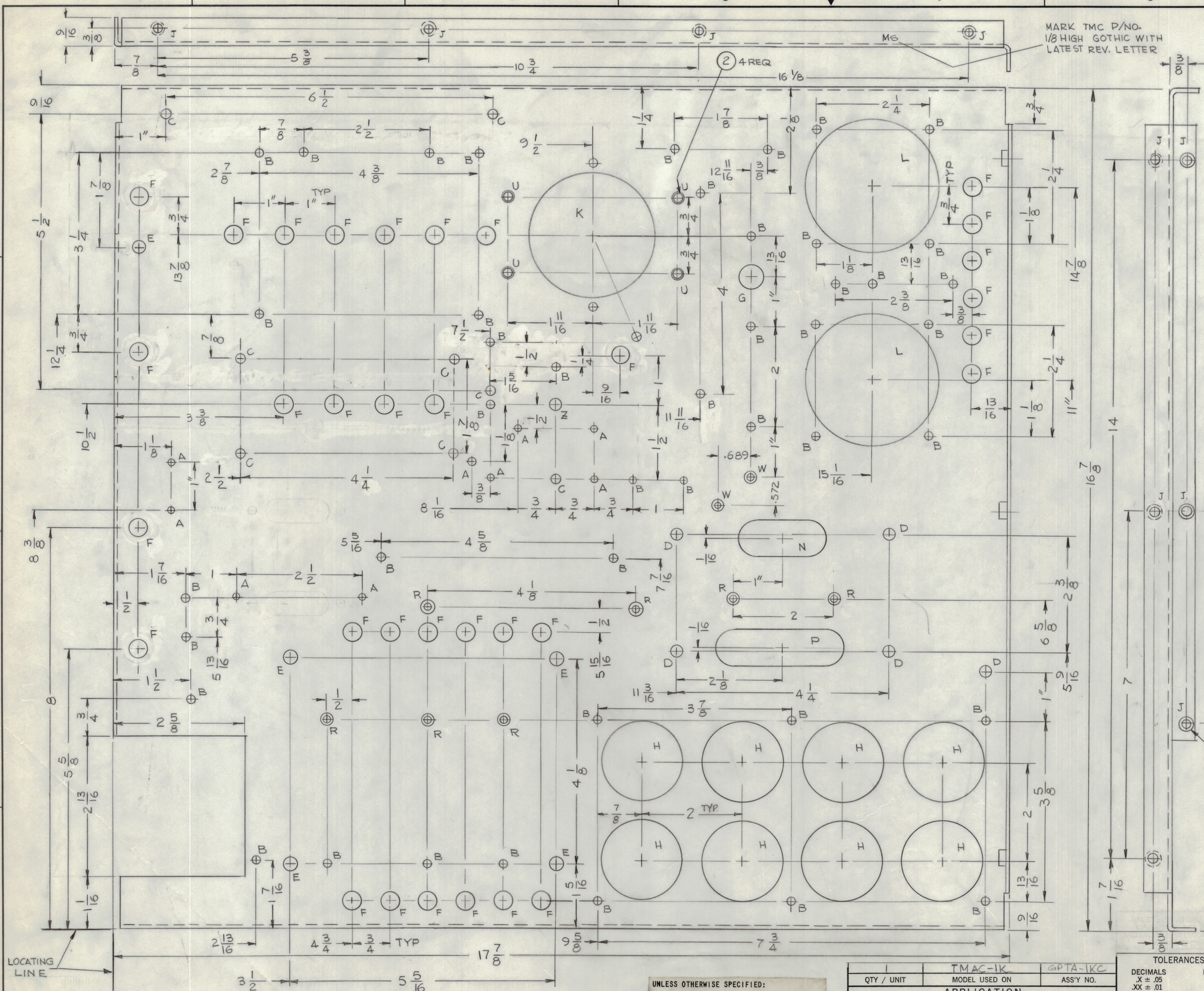
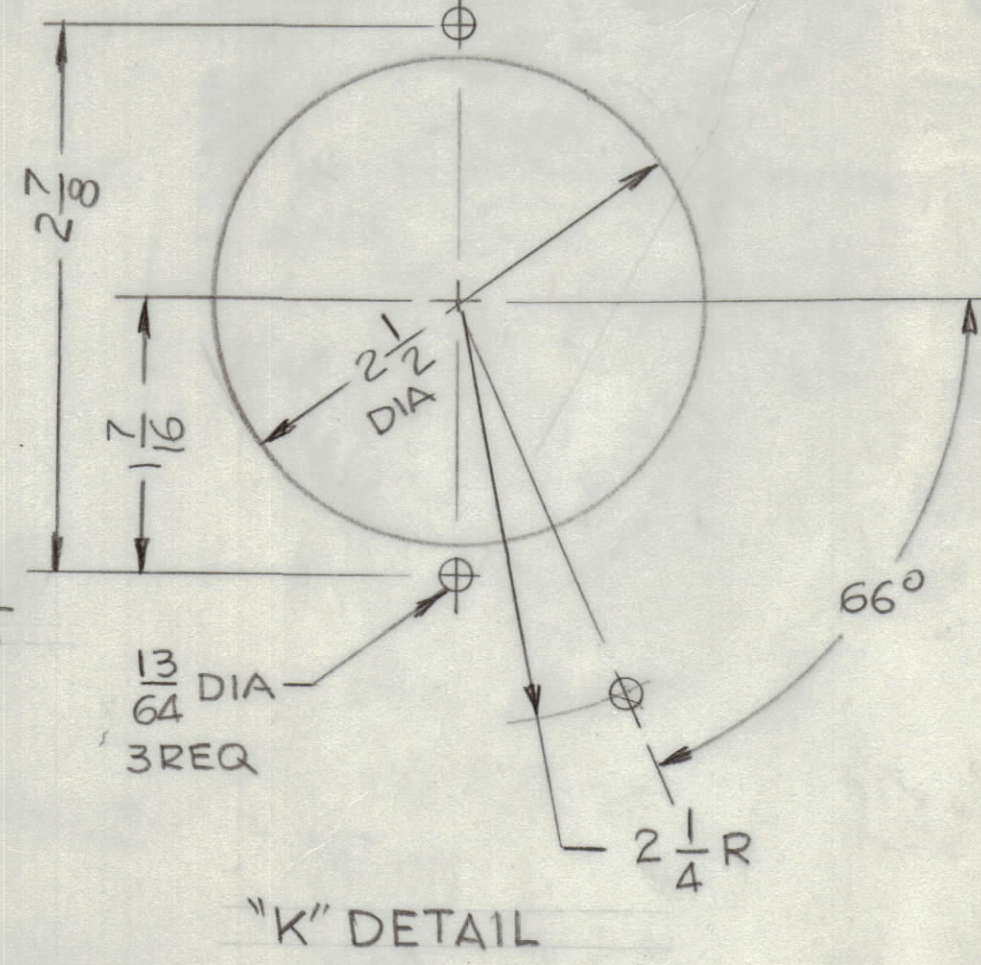


REVISIONS							
E.M.N.O	DRAFT	CHKD	ZONE	LTR	DESCRIPTION	DATE	APPROVED
	GDL	HYS		X1	CLARIFY DIM. LOCATION LINES	12-1-76	
				X2	DIM. 1/5/32 ADD.	1-3-77	
				X3	5 F HOLES WERE T HOLES - TWO 'A' 4 'C' & ONE 'D' HOLES ADD ORIGINAL RELEASE FOR PRODUCTION	1-13-77	



HOLES	DESCRIPTION	REQ
A	9/64 DIA	9
B	11/64 DIA	42
C	13/64 DIA	10
D	15/64 DIA	5
E	9/32 DIA	5
F	3/8 DIA	33
G	1/2 DIA	1
H	1-5/8 DIA	8
J	.221 - .224 DIA	14
K	SEE DETAIL	1
L	2-5/8 DIA	2
M		
N	1-3/4 X 3/4 SLOT	1
P	2 1/2 X 3/4 SLOT	1
R	DRILL .144 DIA C'SHK 82° TO .284 DIA	7
S		
T	DELETED	
U	.191 - .194 DIA	4
V		
Z	1/4 DIA	1
W	.120 DIA C'SHK 82° TO .230 DIA	2



QTY.	REQ.	ITEM	PART NO.	DESCRIPTION	SYMBOL
4	2	NT 129-632-4		NUT PLAIN SPLINE	U
14	1	NT 129-832-4		NUT PLAIN SPLINE	J

LIST OF MATERIAL						
FINAL APPROVAL	DATE	THE TECHNICAL MATERIEL CORP. MAMARONECK, NEW YORK				
MECH. DES.	DATE					
ELECT. DES.	DATE					
CHECKED	DATE					
DRAWN	DATE	CHASSIS, MAIN				
G. DE LUCIA	11-23-76	SIZE	CODE	IDENT NO.	DWG NO.	ISSUE
		D	82679	MS 6761		1
		SCALE	1:1	SHEET		OF

- UNLESS OTHERWISE SPECIFIED:
- USE MATERIAL THICKNESS FOR MAXIMUM RADIUS ON ALL BENDS.
 - ALL ANGULAR BENDS 90 DEGREES.
 - REMOVE ALL BURRS AND SHARP EDGES.
 - MOUNT INSERTS AFTER FINISHING.

QTY / UNIT	MODEL USED ON	ASS'Y NO.
1	TMAC-1K	GPTA-1KC
APPLICATION		
CODE		
MATERIAL .081 THK		
ALUM 5052-H32		
FINISH S404		
YEL IRIDITE		

TOLERANCES ON

DECIMALS	FRACTIONS
.X ± .05	± 1/64
.XX ± .01	ANGLES
.XXX ± .005	± 0° - 30'

NOTICE TO PERSONS RECEIVING THIS DRAWING

THE TECHNICAL MATERIEL CORPORATION claims proprietary right in the material disclosed hereon. This drawing is issued in confidence for engineering information only and may not be reproduced or used to manufacture anything shown hereon without permission from THE TECHNICAL MATERIEL CORPORATION to the user. This drawing is loaned for mutual assistance and is subject to recall at any time.