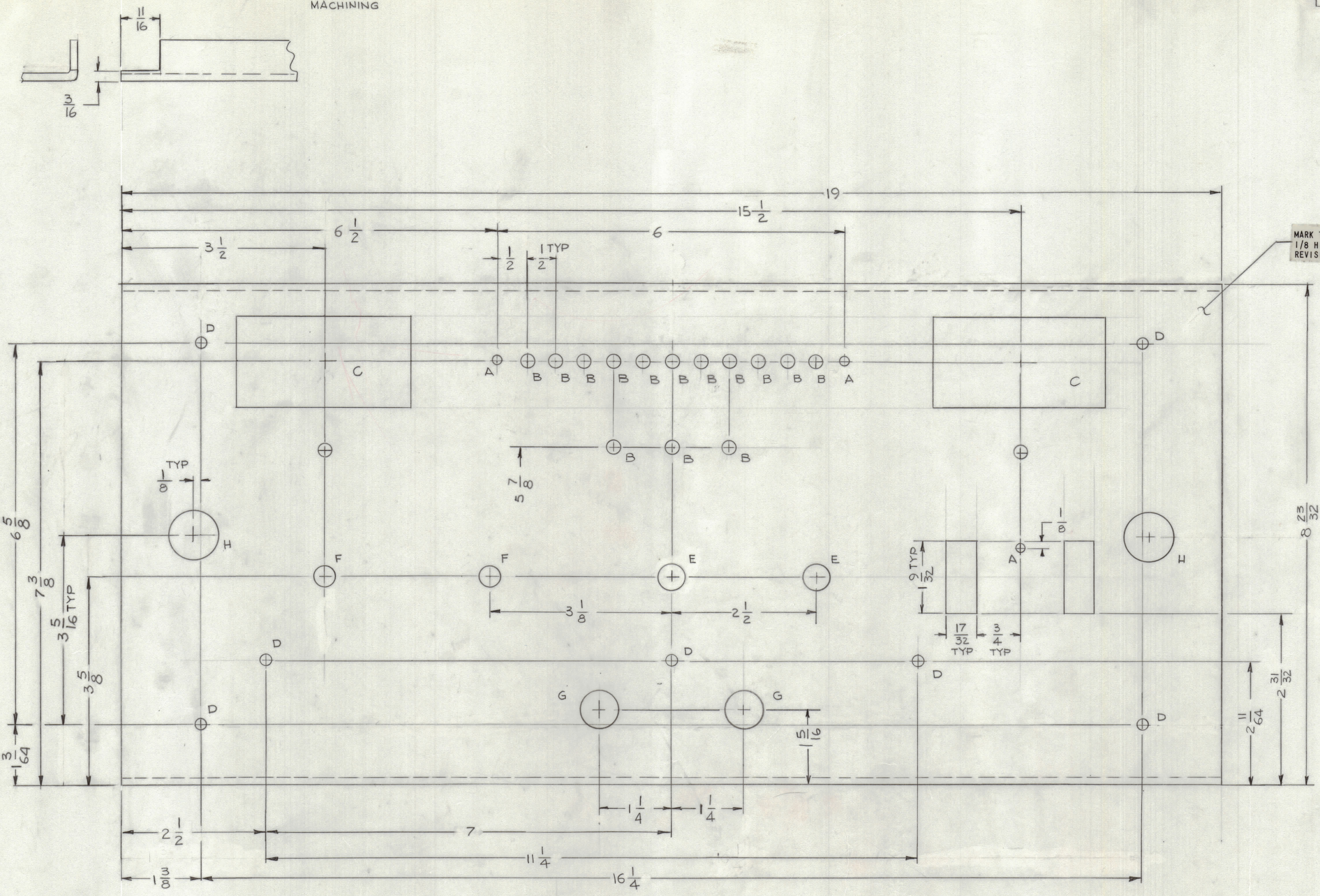


REVISIONS							
E.M.N.O	DRAFT	CHKD	ZONE	LTR	DESCRIPTION	DATE	APPROVED
	GDL			X		11-22-76	
	GDL			XI	ADD DIM. 1/16 FOR 2" HOLES	12-1-76	
					ORIGINAL RELEASE FOR PRODUCTION	1-13-77	

BEND PANEL BEFORE MACHINING

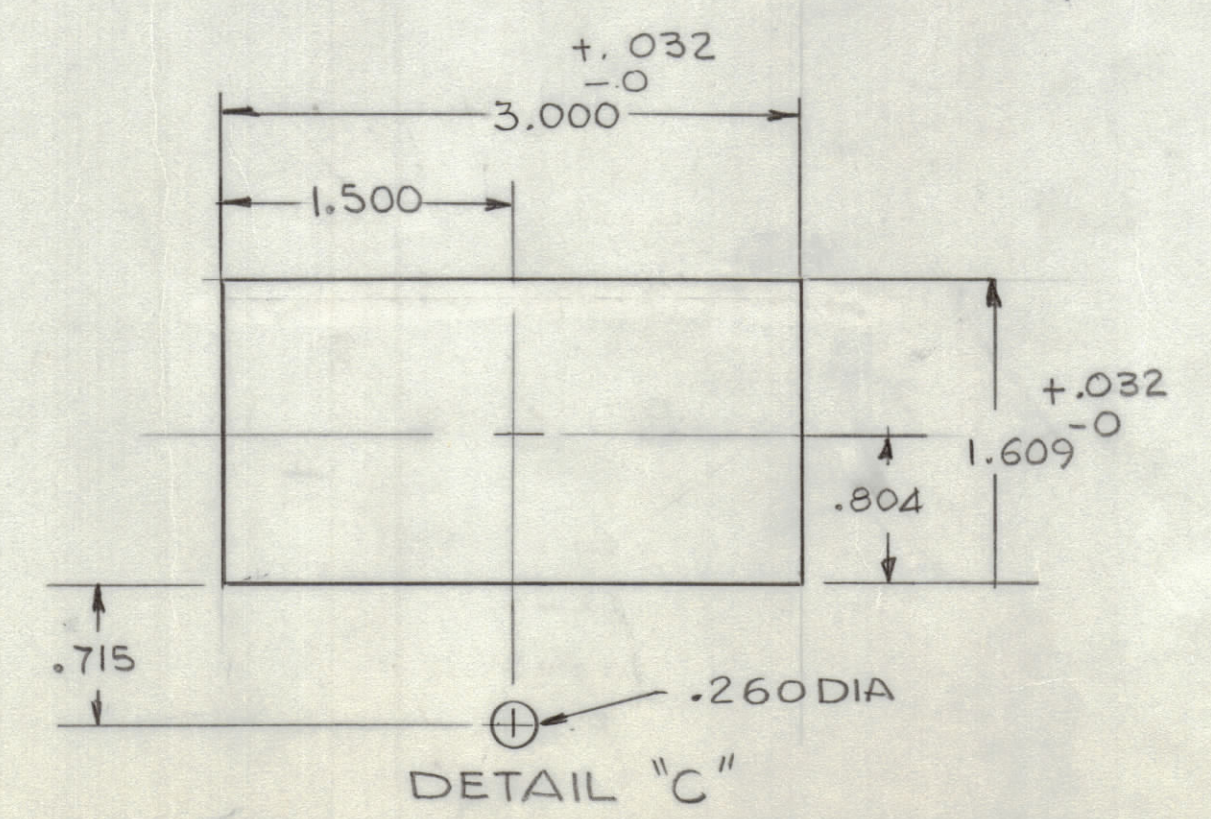


MARK TMC PART NUMBER  
1/8 HIGH GOTHIC WITH LATEST  
REVISION LETTER ON REAR OF PANEL

- MACHINING:**
- MILL ALL EDGES.
  - HOLES MUST BE DRILLED, UNLESS OTHERWISE SPECIFIED.
  - LATERAL BOW OF PANEL MUST BE KEPT TO .031 TOLERANCE.
  - PANEL MUST BE FREE OF ALL MACHINING MARKS, GOUGES AND SCRATCHES. IF NECESSARY, SAND FRONT OF PANEL WITH NO. 120 GRIT SANDPAPER.

- FINISH NOTES:**
- S404 - IRIDITE 14-2 AL-COAT.
  - S114 - ZINC CHROMATE PRIMER
  - S115 - TMC GRAYGE
- FRONT AND EDGES ONLY  
PRIME AND PAINT PER CUSTOMER'S SPECIFICATIONS

HOLES	DESCRIPTION	REQ
A	11/64 DIA	3
B	1/4 DIA	14
C	SEE DETAIL	2
D	13/64 DIA	7
E	15/32 DIA	1
F	3/8 DIA	2
G	11/16 DIA	2
H	7/8 DIA	2



REF: LD3064

QTY / UNIT	MODEL USED ON	ASS'Y NO.
1	TMA-1KC	
APPLICATION		
CODE		
MATERIAL 1/8THK ALUM		
5052-H32		
FINISH AS NOTES		

QTY. REQ.	ITEM	PART NO.	DESCRIPTION	SYMBOL
LIST OF MATERIAL				
THE TECHNICAL MATERIEL CORP. MAMARONECK, NEW YORK				
FRONT PANEL				
SIZE		CODE	IDENT NO.	DWG NO.
D		82679	MS6760	
SCALE 1:1				
				ISSUE
				OF

**NOTICE TO PERSONS RECEIVING THIS DRAWING**  
THE TECHNICAL MATERIEL CORPORATION claims proprietary right in the material disclosed herein. This drawing is issued in confidence for engineering information only and may not be reproduced or used to manufacture anything shown hereon without permission from THE TECHNICAL MATERIEL CORPORATION to the user. This drawing is loaned for mutual assistance and is subject to recall at any time.

MS6760