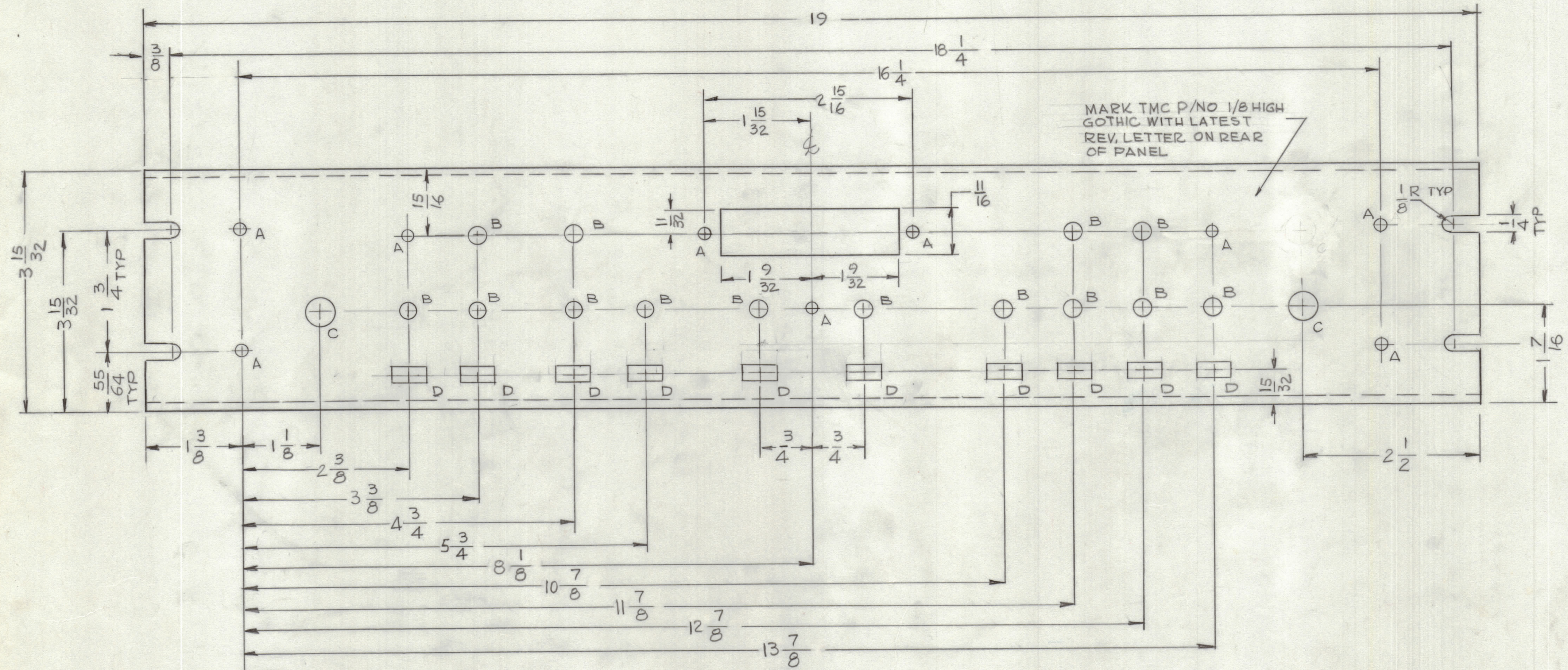
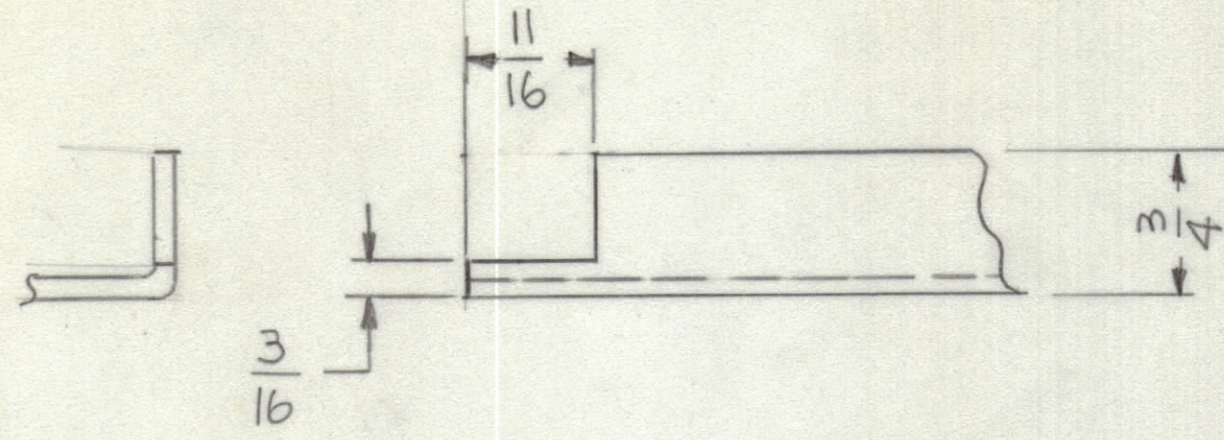
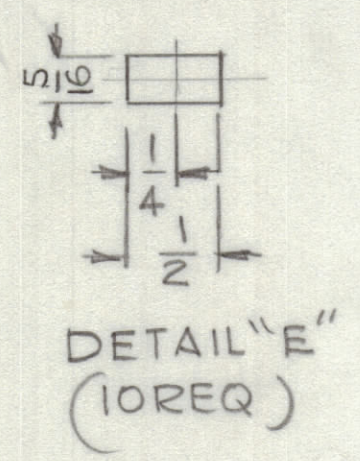


REVISIONS						
E.M.N.O	DRAFT	CHKD	ZONE	LTR	DATE	APPROVED
				X1	11-10-76	#
	G.D.L.			Ø	3-9-77	#

BEND PANEL BEFORE MACHINING
(4 CORNERS)



- HOLES:
- A - 11/64 DIA 9 REQ
 - B - 1/4 DIA 14 REQ
 - C - 13/32 DIA 2 REQ
 - D - SEE DETAIL 10 REQ



MACHINING:

- MILL ALL EDGES.
- HOLES MUST BE DRILLED, UNLESS OTHERWISE SPECIFIED.
- LATERAL BOW OF PANEL MUST BE KEPT TO .031 TOLERANCE.
- PANEL MUST BE FREE OF ALL MACHINING MARKS, GOUGES AND SCRATCHES. IF NECESSARY, SAND FRONT OF PANEL WITH NO. 120 GRIT SANDPAPER.

FINISH NOTES:

- S404 - IRIDITE 14-2 AL-COAT.
- S114 - ZINC CHROMATE PRIMER } FRONT AND
- S - SMOOTH TMC GRAYGE } EDGES ONLY

PRIME AND PAINT PER CUSTOMER'S SPECIFICATIONS

REF: LD 3061

QTY / UNIT	ADC-5A	AX5213
	MODEL USED ON	ASS'Y NO.
APPLICATION		
CODE		
<small>NOTICE TO PERSONS RECEIVING THIS DRAWING</small> <small>THE TECHNICAL MATERIEL CORPORATION claims proprietary right in the material disclosed hereon. This drawing is issued in confidence for engineering information only and may not be reproduced or used to manufacture anything shown hereon without permission from THE TECHNICAL MATERIEL CORPORATION to the user. This drawing is loaned for mutual assistance and is subject to recall at any time.</small>		

QTY. REQ.	ITEM	PART NO.	DESCRIPTION	SYMBOL
LIST OF MATERIAL				
THE TECHNICAL MATERIEL CORP. MAMARONECK, NEW YORK				
PANEL, FRONT REMOTE PROGRAMMER				
UNLESS OTHERWISE SPECIFIED DIMENSIONS ARE IN INCHES AND INCLUDE CHEMICALLY APPLIED OR PLATED FINISHES		FINAL APPROVAL: GDB	DATE: 3/28/77	
TOLERANCES ON DECIMALS: .XX ± .01, .XXX ± .005		ELECT. DES.	DATE	
FRACTIONS: 1/64, ANGLES: ± 0° -30'		CHECKED	DATE	
MATERIAL: .081THK ALUM 5052-H32		DRAWN: G DeLUCIA	DATE: 10-4-76	
FINISH: SEE NOTES		SIZE: D		CODE: 82679
		IDENT NO: MS 6748		DWG NO: MS 6748
		SCALE: 1:1		SHEET OF