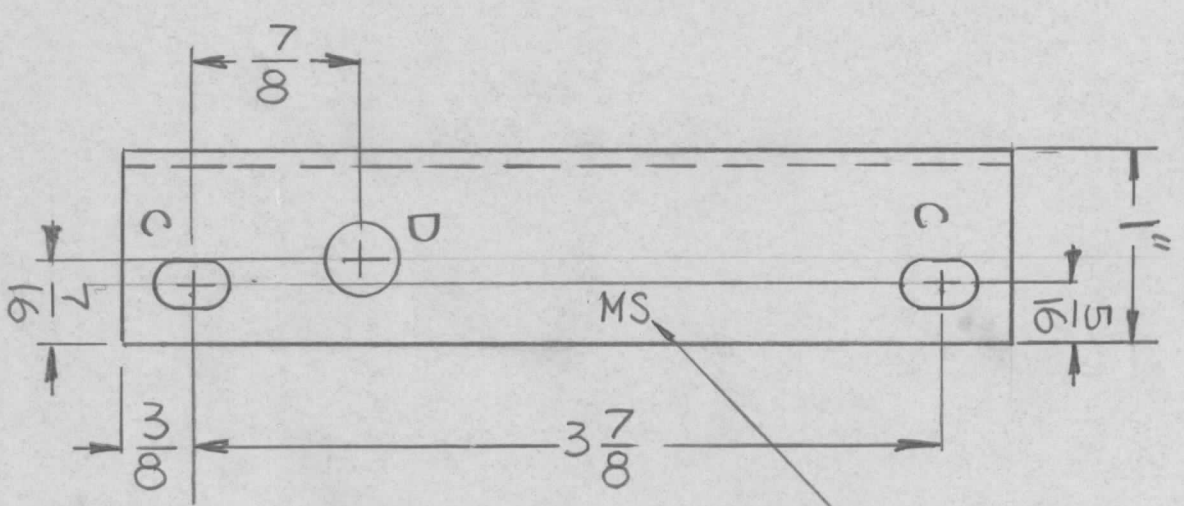
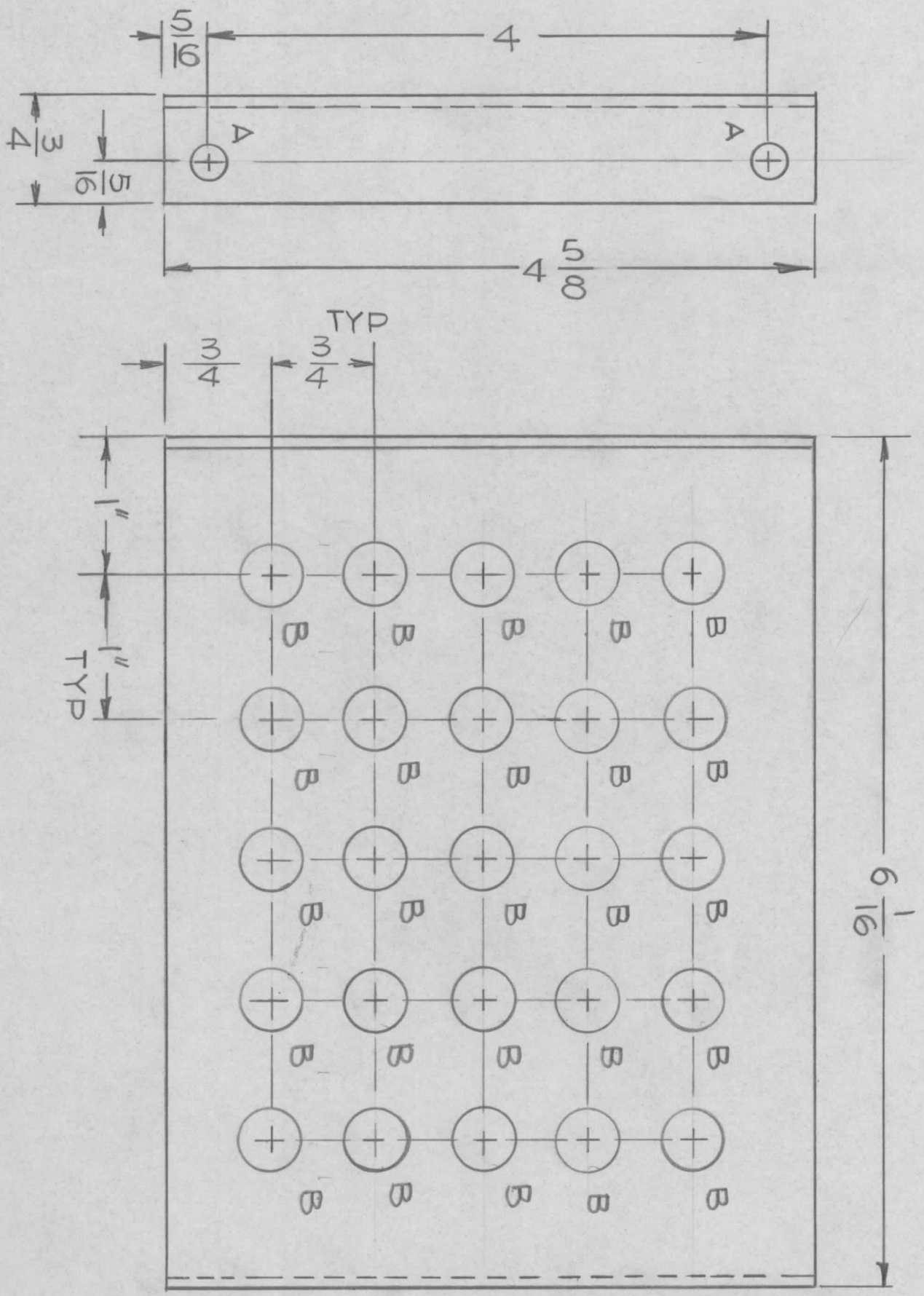


MS6727 AS SHOWN IREQ
 MS6727-2 MIRROR IMAGE 1REQ

REVISIONS			
EMN. NO.	DRAFT	CHKD	ZONE
	GDL		
DESCRIPTION			LTR
ORIGINAL			
DATE	APPROVED		
1-10-77	*		



- MARK TMC P/NO WITH LATEST REV. LETTER
- HOLES
- A - 1/4 DIA 2REQ
 - B - 7/16 DIA 25REQ
 - C - 1/4 X 3/8 SLOT 2REQ
 - D - 3/8 DIA 1REQ

- UNLESS OTHERWISE SPECIFIED:
1. USE MATERIAL THICKNESS FOR MAXIMUM RADIUS ON ALL BENDS.
 2. ALL ANGULAR BENDS 90 DEGREES.
 3. REMOVE ALL BURRS AND SHARP EDGES.
 4. MOUNT INSERTS AFTER FINISHING.

QTY / UNIT	MODEL USED ON	ASSY NO.
	TOC-25-3	
APPLICATION		
CODE		

NOTICE TO PERSONS RECEIVING THIS DRAWING
 THE TECHNICAL MATERIEL CORPORATION claims proprietary right in the material disclosed hereon. This drawing is issued in confidence for engineering information only and may not be reproduced or used to manufacture anything shown hereon without permission from THE TECHNICAL MATERIEL CORPORATION to the user. This drawing is loaned for mutual assistance and is subject to recall at any time.

DECIMALS	FRACTIONS
X ± .05 TOLS.	1/64 ANGLES
.XX ± .01	0° .30'
.XXX ± .005	
MATERIAL .081THK	
ALY 5052-H32	
FINISH	5404
YEL IRIDITE	

REQ'D	ITEM	PART NUMBER	DESCRIPTION	SYM.
			LIST OF MATERIAL	

FINAL APPROVAL	DATE	MECH. DES.	DATE
GDL	1-10-77		
ELECT. DES.	DATE	CHECKED	DATE
		GDL	1-10-77
DRAWN	DATE	BRACKET, RETAIN (AX5130)	
		THE TECHNICAL MATERIEL CORP.	
		MAMARONECK, NEW YORK	
SIZE	CODE IDENT. NO.	DWG NO.	ISSUE
B	82679	MS 6727	
SCALE	1:1	SHEET	OF