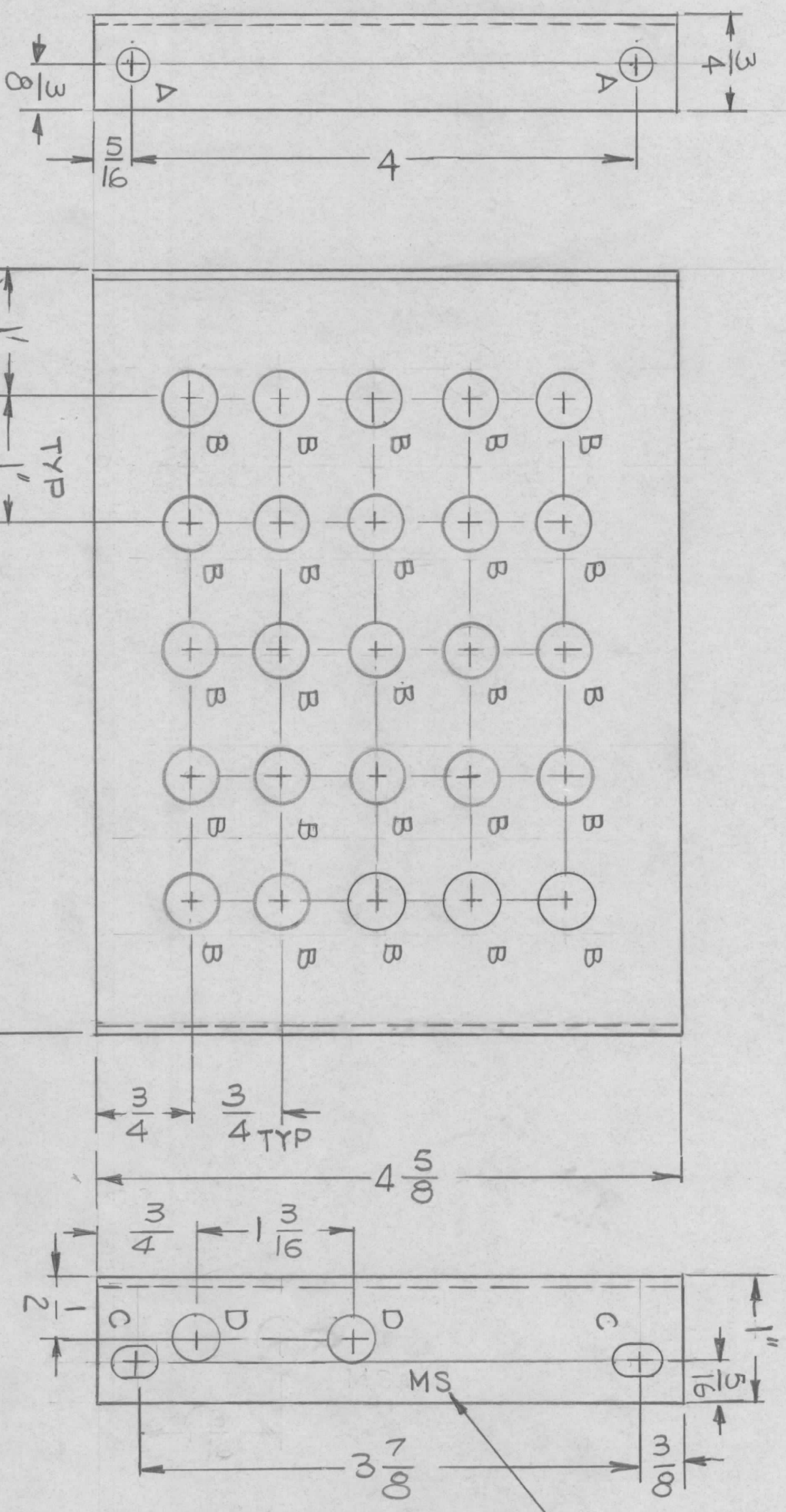


MS 6725 AS SHOWN 1 REQ.
 MS 6725-2 MIRROR IMAGE 1 REQ.

EM/N NO.	DRAFT	CHKD	ZONE	LTR	DESCRIPTION	DATE	APPROVED
					Original Release	1-10-77	*

REVISIONS



- MARK TMC P/NO
 1/8 HIGH GOTHIC
 WITH LATEST REV.
 LETTER.
- HOLE -
- A - 1/4 DIA 2 REQ
 - B - 7/16 DIA 25 REQ
 - C - 1/4 X 3/8 SLOT 2 REQ
 - D - 3/8 DIA 2 REQ

UNLESS OTHERWISE SPECIFIED:

1. USE MATERIAL THICKNESS FOR MAXIMUM RADIUS ON ALL BENDS.
2. ALL ANGULAR BENDS 90 DEGREES.
3. REMOVE ALL BURRS AND SHARP EDGES.

QTY / UNIT	MODEL USED ON	ASSY NO.
	TOC 25-2	
	APPLICATION	
	CODE	

DECIMALS	FRACTIONS
X ± .05	1/64
.XX ± .01	ANGLES
.XXX ± .005	0° - 30'
MATERIAL .081THK	
ALY 5052-H32	
FINISH S404	
VEL IRIDITE	

REQ'D	ITEM	PART NUMBER	DATE
			1-10-77
FINAL APPROVAL	MECH. DES.	ELECT. DES.	DATE
			6-18-76
CHECKED	DATE	DATE	
DRAWN	DATE	DATE	
G.D.L.			

LIST OF MATERIAL

THE TECHNICAL MATERIEL CORP.	
MAMARONECK, NEW YORK	
BRACKET, RETAIN (AP151)	
SIZE B	CODE IDENT. NO. 82679
SCALE 1:1	DWG NO. MS 6725
	SHEET OF
	ISSUE