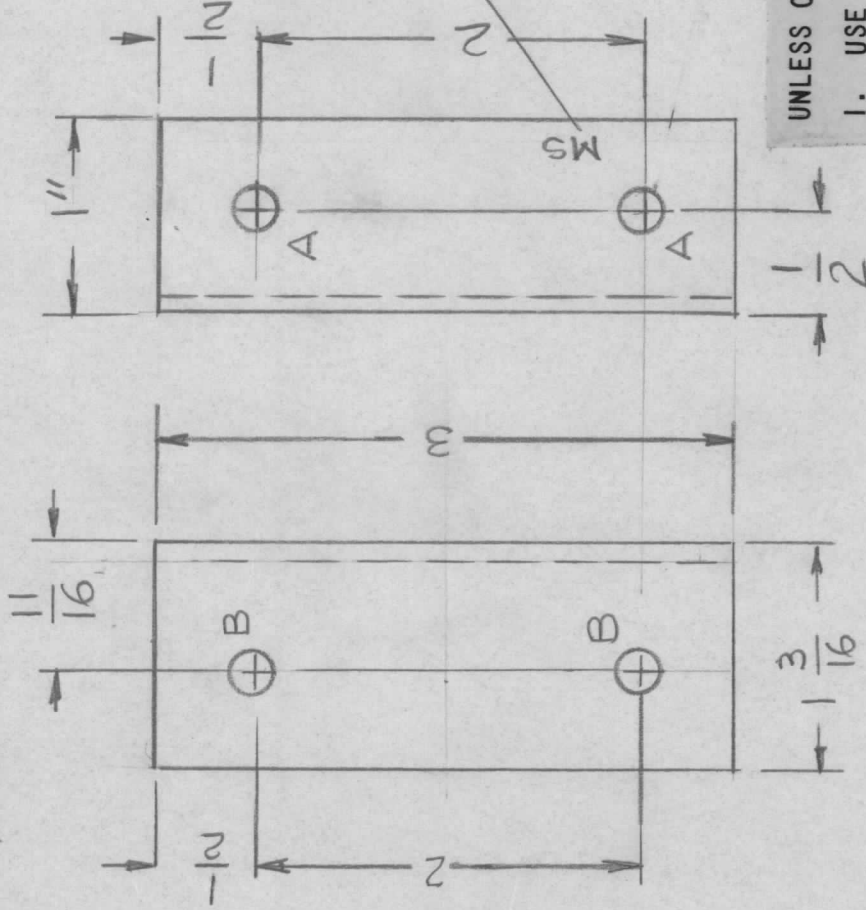


REVISIONS

APPLICATION

QTY	MODEL USED ON	ASSY NO.	LTR	DESCRIPTION	DATE	E.M.N.NO	DRAFT	CHKD	APPD
1	HFLM-10K/1		X	EXP. RELEASE					
			Ø	ORIGINAL RELEASE FOR PROD	8/76		CL		

HOLES:
 A - 13/64 DIA 2 REQ
 B - 15/64 DIA 2 REQ



UNLESS OTHERWISE SPECIFIED:

1. USE MATERIAL THICKNESS FOR MAXIMUM RADIUS ON ALL BENDS.
2. ALL ANGULAR BENDS 90 DEGREES.
3. REMOVE ALL BURRS AND SHARP EDGES.

REQ'D	ITEM	PART NUMBER	DESCRIPTION	SYM.
LIST OF MATERIAL				
THE TECHNICAL MATERIEL CORP. MAMARONECK, NEW YORK				
BRACKET, MTG BD				
FINAL APPROVAL	DATE	DATE		
	6-12-76			
MECH. DES.	DATE	DATE		
ELECT. DES.	DATE	DATE		
CHECKED	DATE	DATE		
DRAWN	G.D.L	DATE 3-6-76		
UNLESS OTHERWISE SPECIFIED DIMENSIONS ARE IN INCHES AND INCLUDE CHEMICALLY APPLIED OR PLATED FINISHES				
DECIMALS FRACTIONS				
.X ± .05 TOLS. 1/64				
.XX ± .01 ANGLES 0°-30'				
.XXX ± .005				
MATERIAL 1/8 THK ALU 5052-H32				
FINISH S404				
YEL. IRIDITE				

NOTICE TO PERSONS RECEIVING THIS DRAWING
 THE TECHNICAL MATERIEL CORPORATION claims proprietary right in the material disclosed hereon. This drawing is issued in confidence for engineering information only and may not be reproduced or used to manufacture anything shown hereon without permission from THE TECHNICAL MATERIEL CORPORATION to the user. This drawing is loaned for mutual assistance and is subject to recall at any time.

SIZE	CODE IDENT. NO.	DWG NO.	ISSUE
A	82679	MS 6689	Ø
SCALE	1:1	SHEET	OF