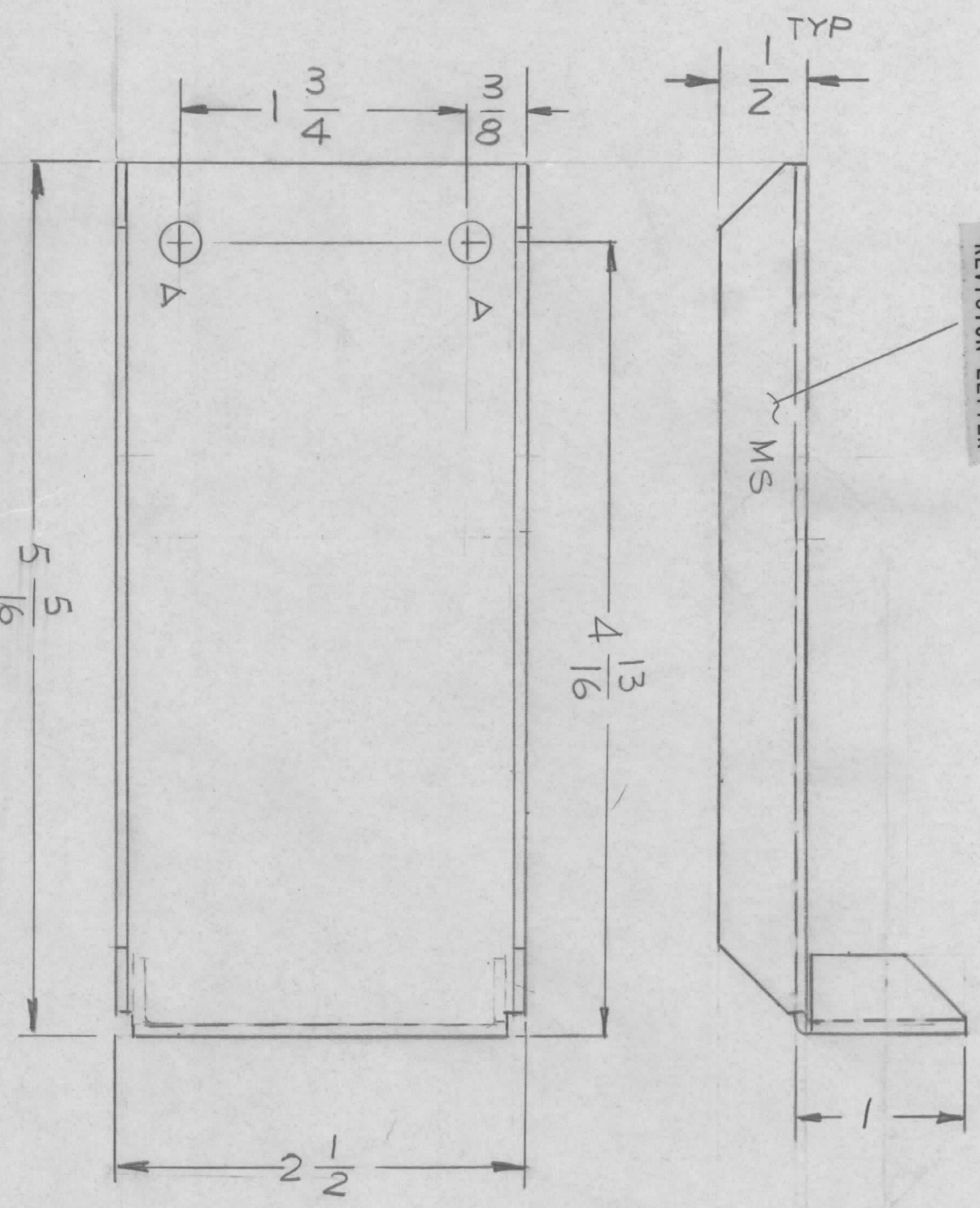
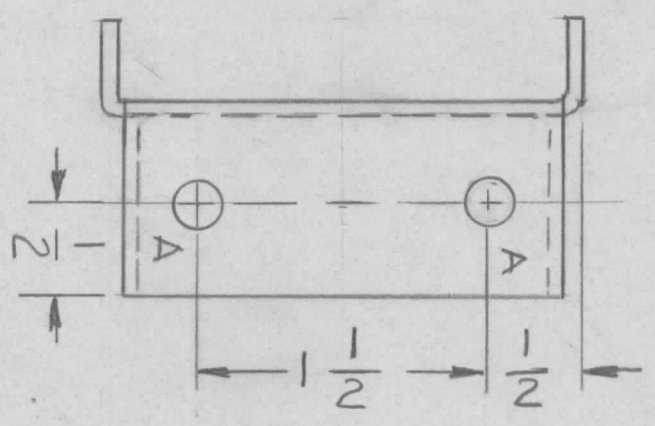


MARK TMC PART NUMBER
1/8 HIGH GOTHIC WITH LATEST
REVISION LETTER



REVISIONS				DESCRIPTION	DATE	APPROVED
EM.N. NO.	DRAFT	CHKD	ZONE	LTR		
				X	EXP. RELEASE	
				Ø		
						8/76

HOLES -
A - 13/64 DIA 4REQ.



- UNLESS OTHERWISE SPECIFIED:
1. USE MATERIAL THICKNESS FOR MAXIMUM RADIUS ON ALL BENDS.
 2. ALL ANGULAR BENDS 90 DEGREES.
 3. REMOVE ALL BURRS AND SHARP EDGES.
 4. ~~REMOVE ALL BURRS AND SHARP EDGES.~~

QTY / UNIT	MODEL USED ON	ASS'Y NO.
1	#FLM- 10K/1	
APPLICATION		
CODE		

NOTICE TO PERSONS RECEIVING THIS DRAWING
THE TECHNICAL MATERIEL CORPORATION claims proprietary right in the material disclosed hereon. This drawing is issued in confidence for engineering information only and may not be reproduced or used to manufacture anything shown hereon without permission from THE TECHNICAL MATERIEL CORPORATION to the user. This drawing is loaned for mutual assistance and is subject to recall at any time.

DECIMALS	FRACTIONS
X ± .05	1/64
.XX ± .01	ANGLES
.XXX ± .005	0° - 30'

FINISH S404
YEL IRIDITE

FINAL APPROV.	DATE
<i>[Signature]</i>	3-12-76
MECH. DES.	DATE
ELECT. DES.	DATE
CHECKED	DATE
DRAWN	DATE
G.D.L.	3-6-76

LIST OF MATERIAL

THE TECHNICAL MATERIEL CORP.
MAMARONECK, NEW YORK

BRACKET, MTG

REQ'D ITEM	PART NUMBER	DESCRIPTION	SYM.
SIZE	CODE IDENT. NO.	DWG NO.	ISSUE
B	82679	MS6686	1
SCALE	1:1	SHEET	OF