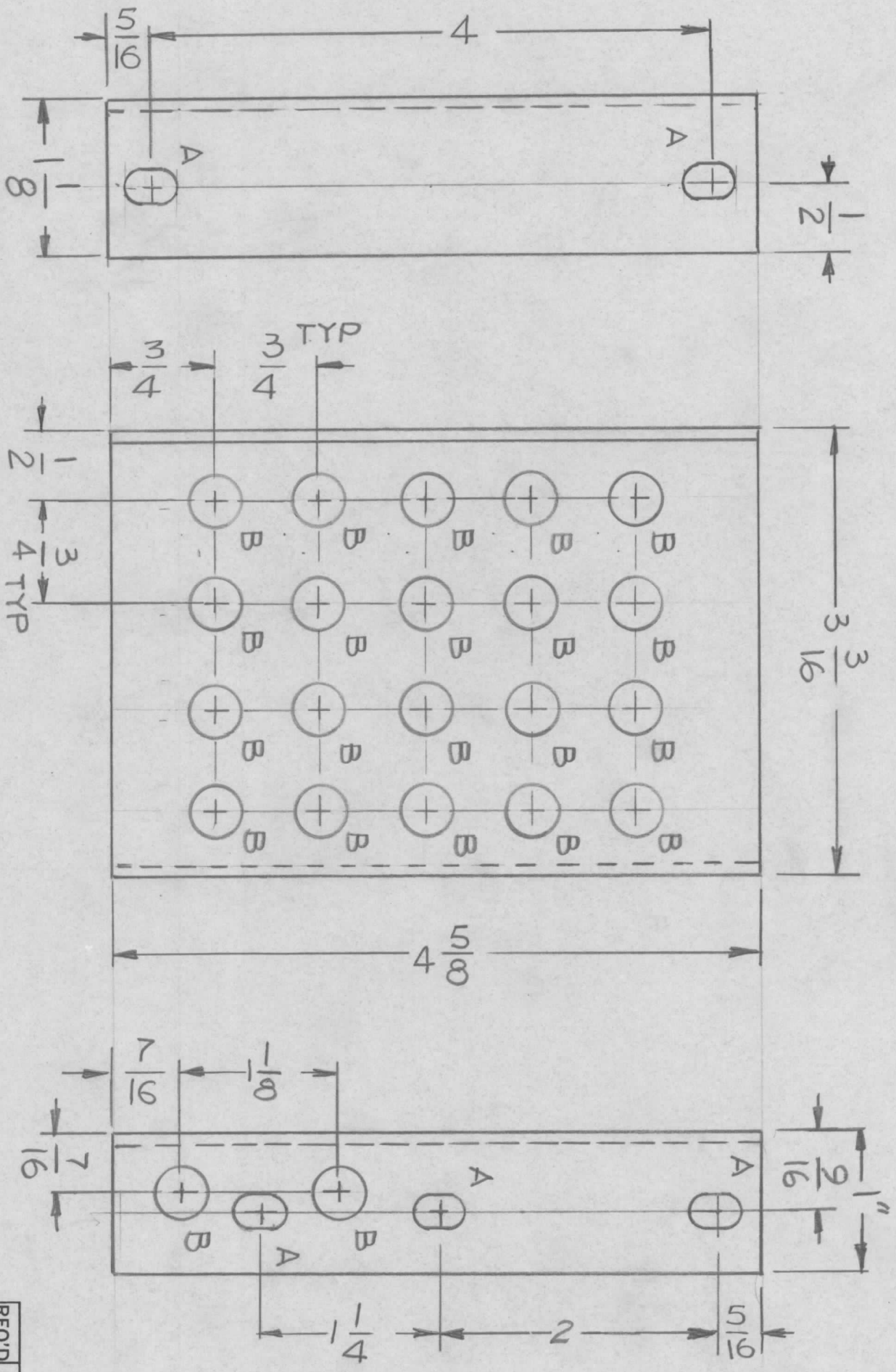


MS 66669 AS SHOWN 1 REQ
 MS 6669-2 MIRROR IMAGE 1 REQ

REVISIONS							
EM.N. NO.	DRAFT	CHKD	ZONE	LTR	DESCRIPTION	DATE	APPROVED
	GDL				REDRAWN WITH CHANGES	6-17-76	
					ORIGINAL RELEASE	1-10-77	*



HOLE S
 A - 1/4 X 3/8 SLOT 5 REQ
 B - 3/8 DIA 22 REQ

UNLESS OTHERWISE SPECIFIED:

1. USE MATERIAL THICKNESS FOR MAXIMUM RADIUS ON ALL BENDS.
2. ALL ANGULAR BENDS 90 DEGREES.
3. REMOVE ALL BURRS AND SHARP EDGES.
4. MOUNT INSERTS AFTER FINISHING.

QTY / UNIT	1	MODEL USED ON	TOC-25-1	ASS'Y NO.	
APPLICATION		CODE			

DECIMALS	X ± .05	TOLS.	1/64
	.XX ± .01	ANGLES	0° .30'
	.XXX ± .005		
MATERIAL	.081 THK		
FINISH	ALY 5052-H32		
	YEL IRIDITE		

REQ'D ITEM	PART NUMBER	DESCRIPTION	SYM.
		BRACKET, RETAIN (TFP-1K)	

FINAL APPROVAL	DATE	MECH. DES.	DATE	ELECT. DES.	DATE	CHECKED	DATE	DRAWN	DATE
GDL	1-10-77							GDL	6-17-76

THE TECHNICAL MATERIEL CORP.	MAMARONECK, NEW YORK		
SIZE	CODE IDENT. NO.	DWG NO.	ISSUE
B	82679	MS 66669	
SCALE	1:1	SHEET	OF

NOTICE TO PERSONS RECEIVING THIS DRAWING
 THE TECHNICAL MATERIEL CORPORATION claims proprietary right in the material disclosed hereon. This drawing is issued in confidence for engineering information only and may not be reproduced or used to manufacture anything shown hereon without permission from THE TECHNICAL MATERIEL CORPORATION to the user. This drawing is loaned for mutual assistance and is subject to recall at any time.

5 4 3 2 1