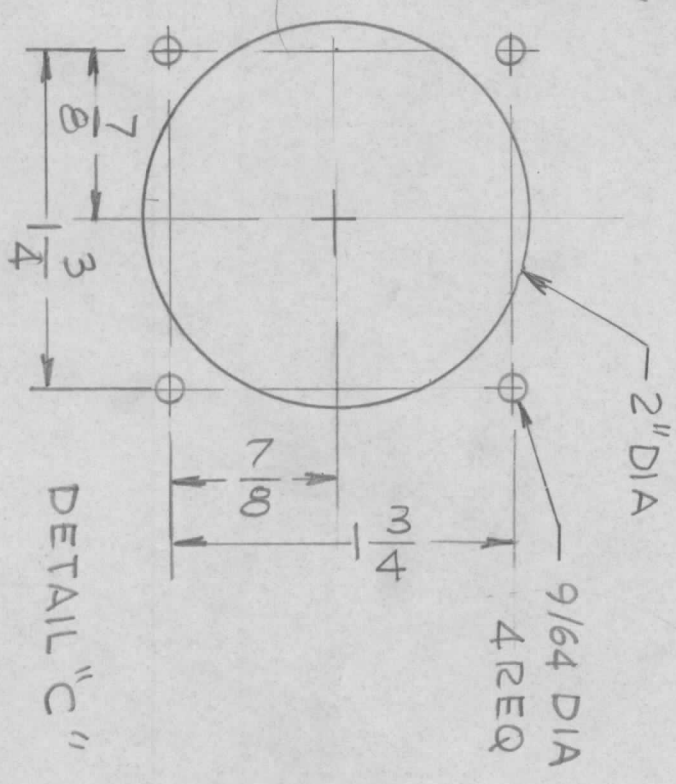
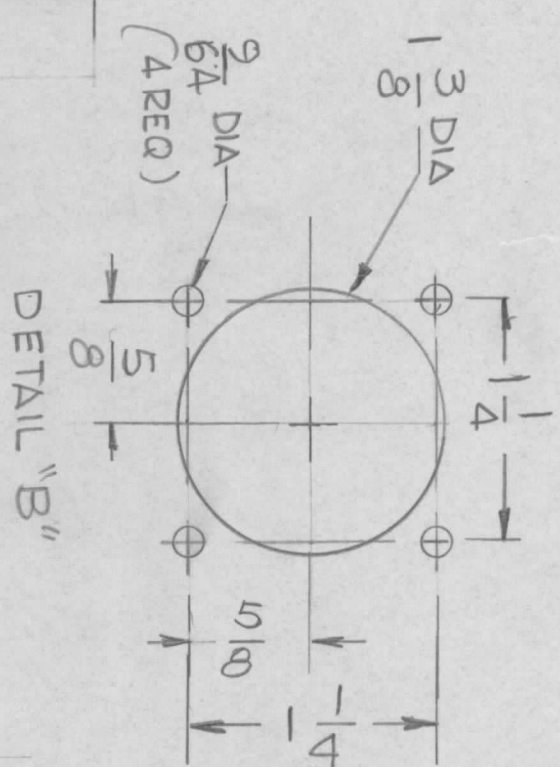
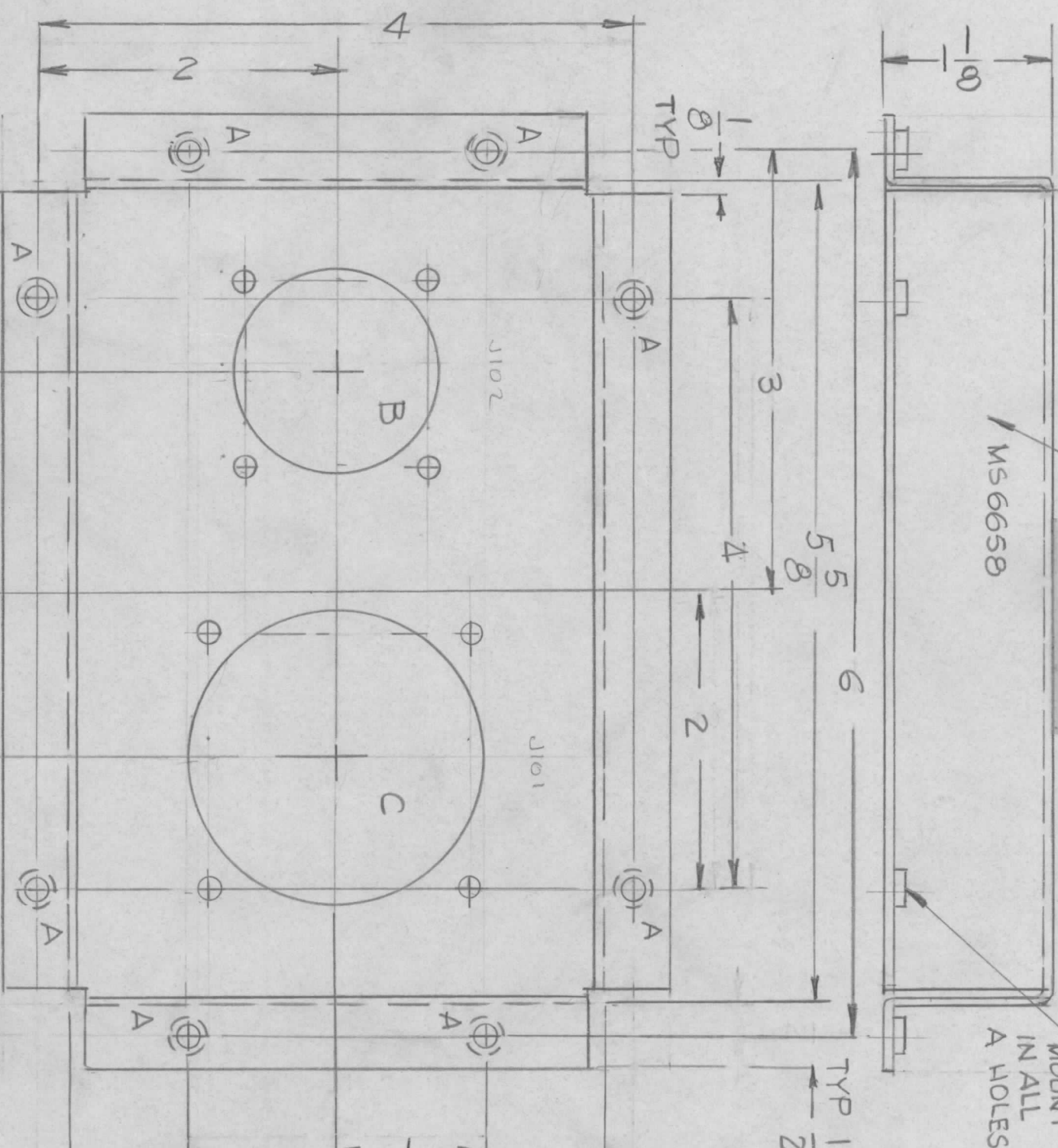


MARK TMC PART NUMBER
1/8 HIGH GOTHIC WITH LATEST
REVISION LETTER

MS 6658

① MOUNT
IN ALL
A HOLES

REVISIONS				DESCRIPTION	DATE	APPROVED
EM.N NO.	DRAFT	CHKD	ZONE	LTR		
	GDL				ORIGINAL	RELEASE
					1-10-77	



HOLE
A - .191-.194 DIA 8 REQ
B - SEE DETAIL 1 REQ
C - SEE DETAIL

UNLESS OTHERWISE SPECIFIED:

1. USE MATERIAL THICKNESS FOR MAXIMUM RADIUS ON ALL BENDS.
2. ALL ANGULAR BENDS 90 DEGREES.
3. REMOVE ALL BURRS AND SHARP EDGES.
4. MOUNT INSERTS AFTER FINISHING.

QTY / UNIT	MODEL USED ON	ASSY NO.
1	SYM 5204	AX 5206
APPLICATION		
CODE		

NOTICE TO PERSONS RECEIVING THIS DRAWING
THE TECHNICAL MATERIEL CORPORATION claims proprietary right in the material disclosed hereon. This drawing is issued in confidence for engineering information only and may not be reproduced or used to manufacture anything shown hereon without permission from THE TECHNICAL MATERIEL CORPORATION to the user. This drawing is loaned for mutual assistance and is subject to recall at any time.

REF: LD3043

UNLESS OTHERWISE SPECIFIED
DIMENSIONS ARE IN INCHES
AND INCLUDE CHEMICALLY APPLIED
OR PLATED FINISHES

DECIMALS	FRACTIONS
.X ± .05	1/64
.XX ± .01	TOLS. ANGLES
.XXX ± .005	0° - 30'

FINISH S404 YEL. 1B1PBT
S114 ZING CHD20H
S521 TMC GRAYTE XUPATED

REQ'D ITEM	PART NUMBER	DESCRIPTION	SYM.
B 1	NT1290632-4	NUT, ROUND	

LIST OF MATERIAL
THE TECHNICAL MATERIEL CORP.
MAMARONECK, NEW YORK

BRACKET MTG. CONNECTOR

SIZE	CODE IDENT. NO.	DWG. NO.	ISSUE
B	82679	M3 6658	0
SCALE	1:1	SHEET	OF