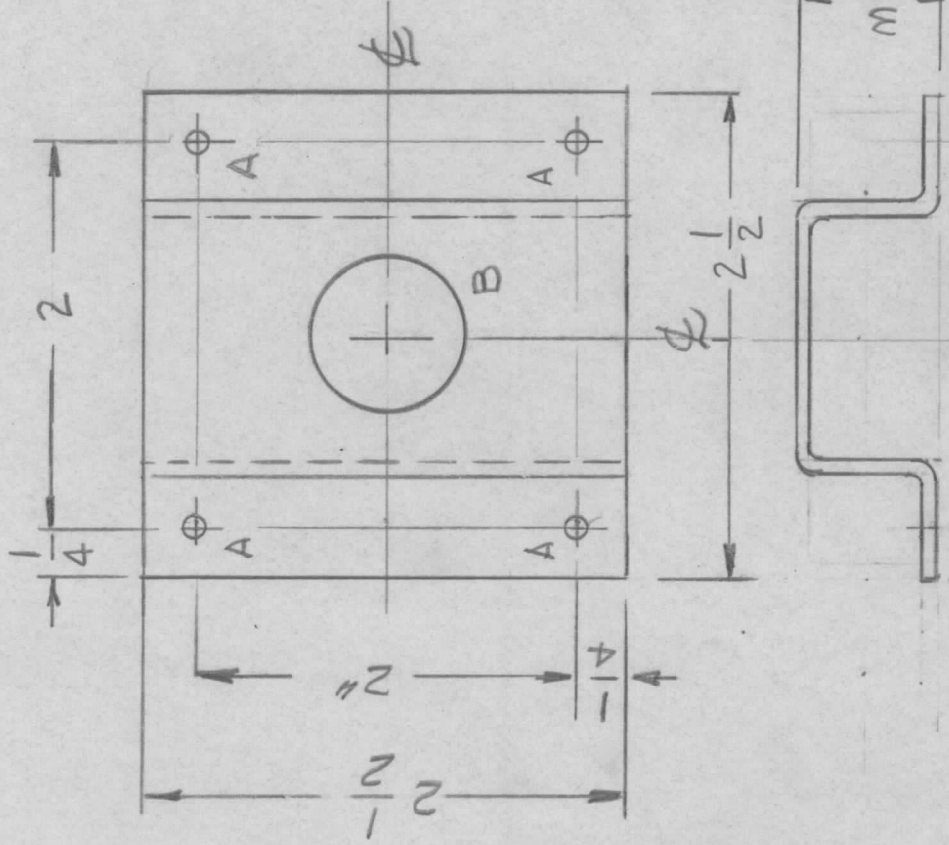


APPLICATION

REVISIONS

QTY	MODEL USED ON	ASS'Y NO.	LTR	DESCRIPTION	DATE	E.M.N.NO	DRAFT	CHKD	APPD
12	SYM 5203		Ø	EXP. RELEASE	1-10-77				*



HOLE -  
 A - .128 DIA 4REQ.  
 B - 13/16 DIA 1REQ.

FINISH NOTES:  
 1. S404 - IRIDITE 14-2 AL-COAT.  
 2. S114 - ZINC CHROMATE PRIMER } FRONT AND  
 3. S521 TMC GRAY, TEXTURED VINYL PAINT } EDGES ONLY

5/8  
 TYP

REQ'D	ITEM	PART NUMBER	DESCRIPTION	SYM.
LIST OF MATERIAL				
THE TECHNICAL MATERIEL CORP. MAMARONECK, NEW YORK				
BRACKET, MTG FEET				
UNLESS OTHERWISE SPECIFIED DIMENSIONS ARE IN INCHES AND INCLUDE CHEMICALLY APPLIED OR PLATED FINISHES				
DECIMALS	FRACTIONS			
.X ± .05	TOLS. 1/64			
.XX ± .01	ANGLES 0° - 30'			
.XXX ± .005				
MATERIAL .081THK				
ALUM 5052-H32				
FINISH SEE NOTE				
FINAL APPROVAL	ØB	DATE 11/10/77		
MECH. DES.		DATE		
ELECT. DES.		DATE		
CHECKED		DATE		
DRAWN G.D.L		DATE 6-9-75		
SIZE A	CODE IDENT. NO. 82679	DWG NO. MS 6638	ISSUE	Ø
SCALE 1:1	SHEET	OF		

NOTICE TO PERSONS RECEIVING THIS DRAWING  
 THE TECHNICAL MATERIEL CORPORATION claims proprietary right in the material disclosed hereon. This drawing is issued in confidence for engineering information only and may not be reproduced or used to manufacture anything shown hereon without permission from THE TECHNICAL MATERIEL CORPORATION to the user. This drawing is loaned for mutual assistance and is subject to recall at any time.