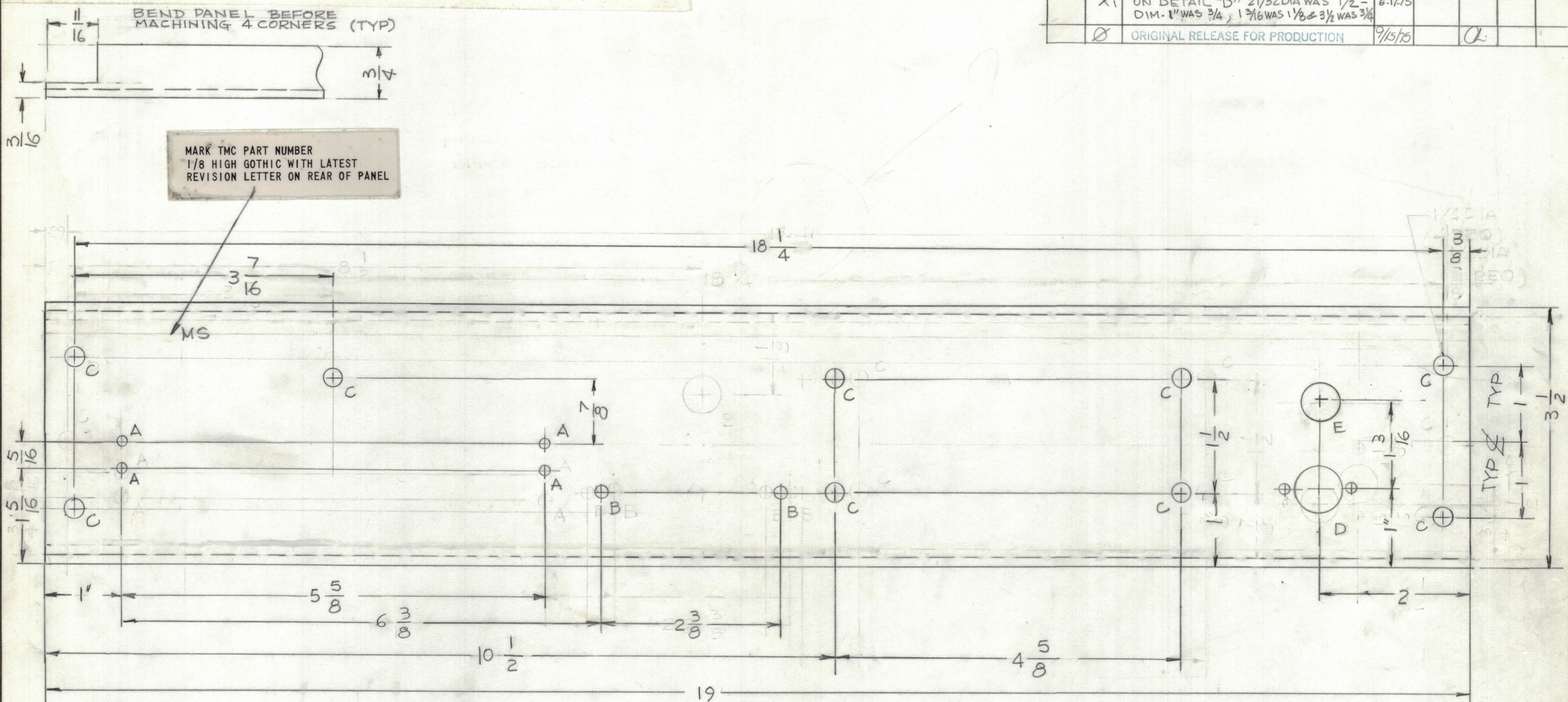
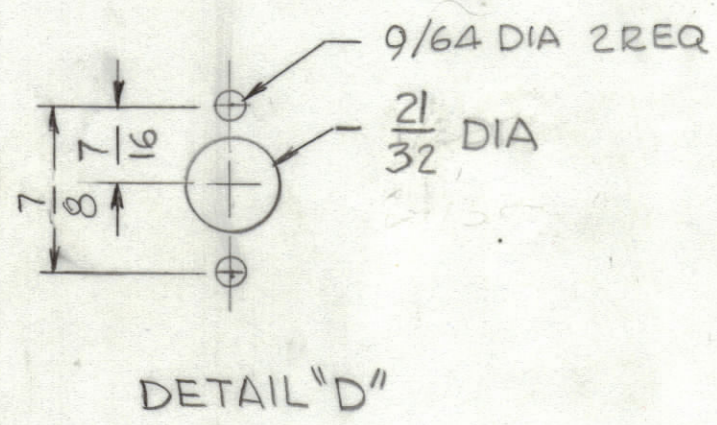


REVISIONS						
ZONE	LTR	DESCRIPTION	DATE	E.M.N.NO	DRAFT	CHKD
	X1	ON DETAIL "D" 21/32 DIA WAS 1/2 - DIM. 1" WAS 3/4, 1 3/16 WAS 1/8 & 3 1/2 WAS 3/4	6-17-75			
	Ø	ORIGINAL RELEASE FOR PRODUCTION	9/5/75			



- HOLES:**
- A - 9/64 DIA 4 REQ
 - B - 11/64 DIA 2 REQ
 - C - 1/4 DIA 9 REQ
 - D - SEE DETAIL 1 REQ
 - E - 1/2 DIA 1 REQ



FINISH NOTES:

1. S404 - IRIDITE 14-2 AL-COAT.
2. S114 - ZINC CHROMATE PRIMER
3. S115 - SMOOTH GRAY ENAMEL

FRONT AND EDGES ONLY
OR
PRIME AND PAINT PER CUSTOMER'S SPECIFICATIONS

QTY / UNIT	MODEL USED ON	ASS'Y NO.
1	AX5199	
APPLICATION		
CODE		
NOTICE TO PERSONS RECEIVING THIS DRAWING		
THE TECHNICAL MATERIEL CORPORATION claims proprietary right in the material disclosed hereon. This drawing is issued in confidence for engineering information only and may not be reproduced or used to manufacture anything shown hereon without permission from THE TECHNICAL MATERIEL CORPORATION to the user. This drawing is loaned for mutual assistance and is subject to recall at any time.		

REF: LD 3037		QTY. REQ.	ITEM	PART NO.	DESCRIPTION	SYMBOL
LIST OF MATERIAL						
UNLESS OTHERWISE SPECIFIED DIMENSIONS ARE IN INCHES AND INCLUDE CHEMICALLY APPLIED OR PLATED FINISHES					THE TECHNICAL MATERIEL CORP. MAMARONECK, NEW YORK	
TOLERANCES ON					PANEL, FRONT HANDSET	
DECIMALS .X ± .05 .XX ± .01 .XXX ± .005					SIZE CODE IDENT.NO. DWG NO.	
FRACTIONS ± 1/64 ± 1/32 ± 0°-30'					C 82679 MS 6631	
MATERIAL 1/8 THK ALY 5052-H32					SCALE 1:1 SHEET OF	
FINISH SEE NOTE					ISSUE Ø	

FINAL APPROVAL	DATE
MECH. DES.	DATE
ELECT. DES.	DATE
CHECKED	DATE
DRAWN	DATE