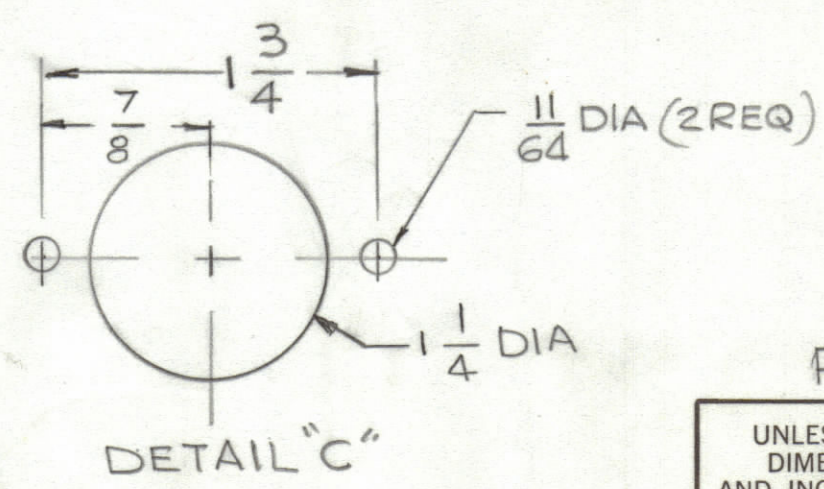
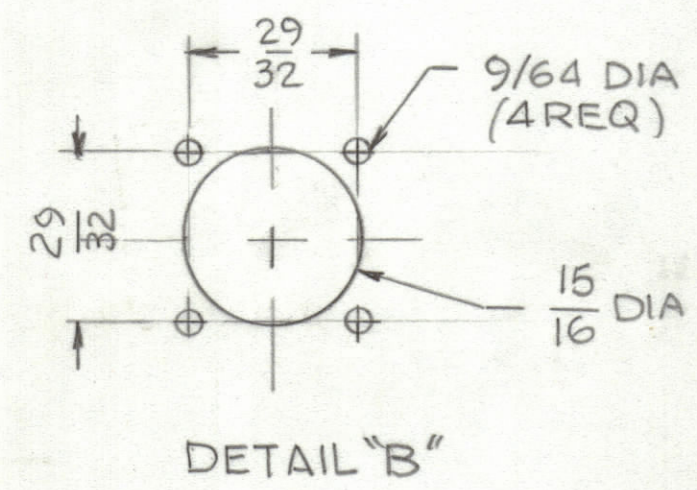
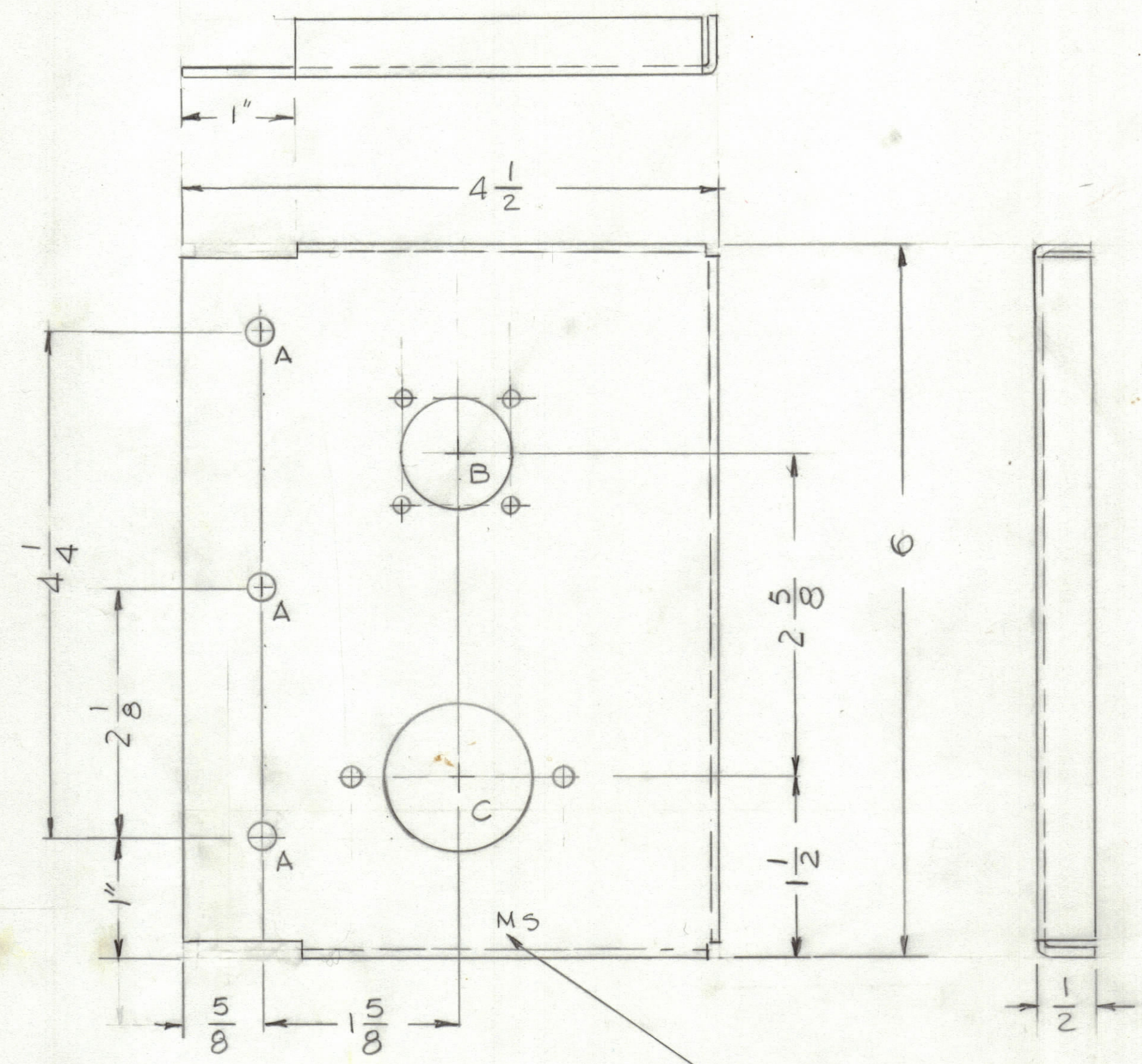


REVISIONS						
ZONE	LTR	DESCRIPTION	DATE	E.M.N.NO	DRAFT	CHKD APPD
	X	EXP RELEASE				
	XI	1" NOTCH ADD	6-20-75		RDL	
	Ø	ORIGINAL RELEASE FOR PRODUCTION	9/15/75		CL	

UNLESS OTHERWISE SPECIFIED:
 1. USE MATERIAL THICKNESS FOR MAXIMUM RADIUS ON ALL BENDS.
 2. ALL ANGULAR BENDS 90 DEGREES.
 3. REMOVE ALL BURRS AND SHARP EDGES.

HOLES:
 A - 15/64 DIA 3 REQ
 B - SEE DETAIL 1 REQ
 C - SEE DETAIL 1 REQ



MARK TMC PART NUMBER
 1/8 HIGH GOTHIC WITH LATEST
 REVISION LETTER

REF: LD3036

1	TOC-24-1	
QTY / UNIT	MODEL USED ON	ASS'Y NO.
APPLICATION		
CODE		

NOTICE TO PERSONS RECEIVING THIS DRAWING
 THE TECHNICAL MATERIEL CORPORATION claims proprietary right in the material disclosed hereon. This drawing is issued in confidence for engineering information only and may not be reproduced or used to manufacture anything shown hereon without permission from THE TECHNICAL MATERIEL CORPORATION to the user. This drawing is loaned for mutual assistance and is subject to recall at any time.

UNLESS OTHERWISE SPECIFIED
 DIMENSIONS ARE IN INCHES
 AND INCLUDE CHEMICALLY APPLIED
 OR PLATED FINISHES

TOLERANCES ON

DECIMALS	FRACTIONS
.X ± .05	± 1/64
.XX ± .01	ANGLES
.XXX ± .005	± 0° -30'

MATERIAL .064 THK ALUM
 5052-H32

FINISH S404
 VEL IRIDITE

QTY. REQ.	ITEM	PART NO.	DESCRIPTION	SYMBOL
LIST OF MATERIAL				
FINAL APPROVAL <i>GDB</i> DATE <i>9/10/75</i>				
MECH. DES. DATE				
ELECT. DES. DATE				
CHECKED DATE				
DRAWN <i>G.D.L</i> DATE <i>6-4-75</i>				
THE TECHNICAL MATERIEL CORP. MAMARONECK, NEW YORK				
BRACKET, MTG CONN.				
SIZE	CODE IDENT.NO.	DWG NO.	ISSUE	
C	82679	MS 6624	Ø	
SCALE 1:1			SHEET	OF