

REVISIONS

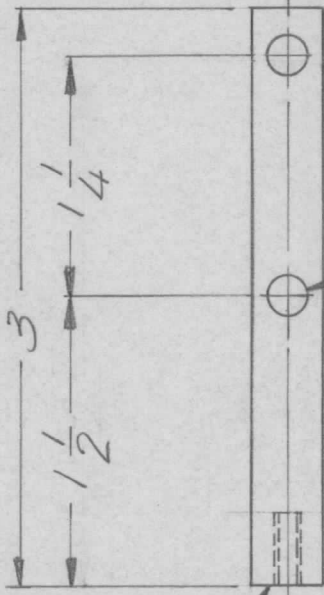
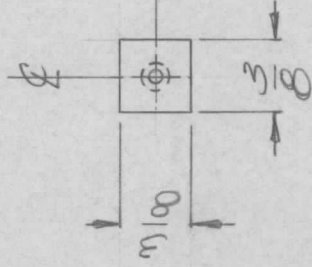
APPLICATION

QTY	MODEL USED ON	ASS'Y NO.	LTR	DESCRIPTION	DATE	E.M.N.NO	DRAFT	CHKD	APPD
-----	---------------	-----------	-----	-------------	------	----------	-------	------	------

2 GPR110 BMASIS

Ø Original Release 1-1977

DRILL & TAP FOR
0632 THD X 3/8
DEER



13/64 DIA. (2 REQ.)

UNLESS OTHERWISE SPECIFIED
DIMENSIONS ARE IN INCHES
AND INCLUDE CHEMICALLY APPLIED
OR PLATED FINISHES

DECIMALS
.X ± .05
.XX ± .01
.XXX ± .005

FRACTIONS
1/64
TOLS.
ANGLES
0°-30°

MATERIAL ALLUM
FINISH SL404
YEL. IRIDITE

REQ'D ITEM	PART NUMBER	DESCRIPTION	SYM.
F. BUDETTI LIST OF MATERIAL			
FINAL APPROVAL	DATE	THE TECHNICAL MATERIEL CORP.	
MECH. DES.	DATE	MAMARONECK, NEW YORK	
ELECT. DES.	DATE	BAR, SUPPORT	
CHECKED	DATE		
DRAWN	DATE		

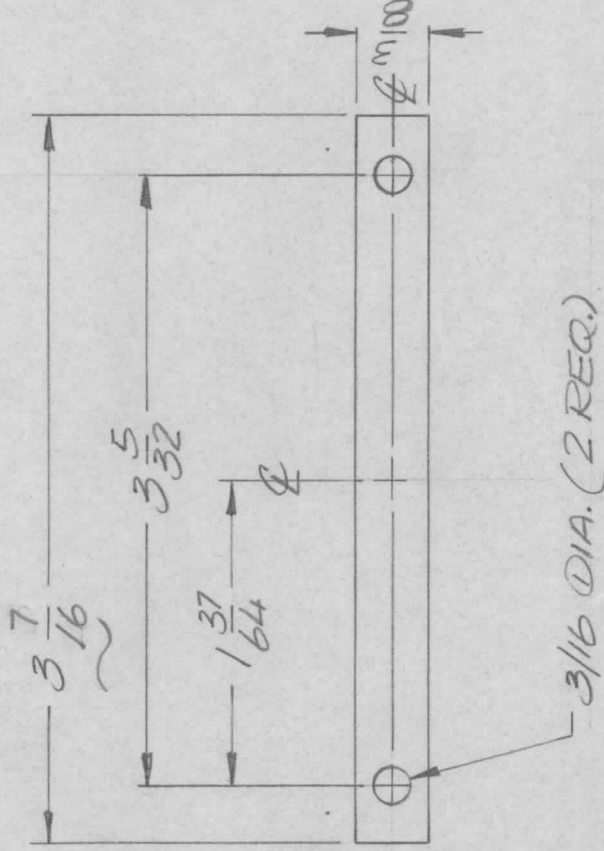
SIZE	CODE IDENT. NO.	DWG NO.	ISSUE
A	82679	MS 6501	Q
SCALE	1:1	SHEET	OF

NOTICE TO PERSONS RECEIVING THIS DRAWING
THE TECHNICAL MATERIEL CORPORATION claims proprietary right in the material disclosed hereon. This drawing is issued in confidence for engineering information only and may not be reproduced or used to manufacture anything shown hereon without permission from THE TECHNICAL MATERIEL CORPORATION to the user. This drawing is loaned for mutual assistance and is subject to recall at any time.

REVISIONS

APPLICATION

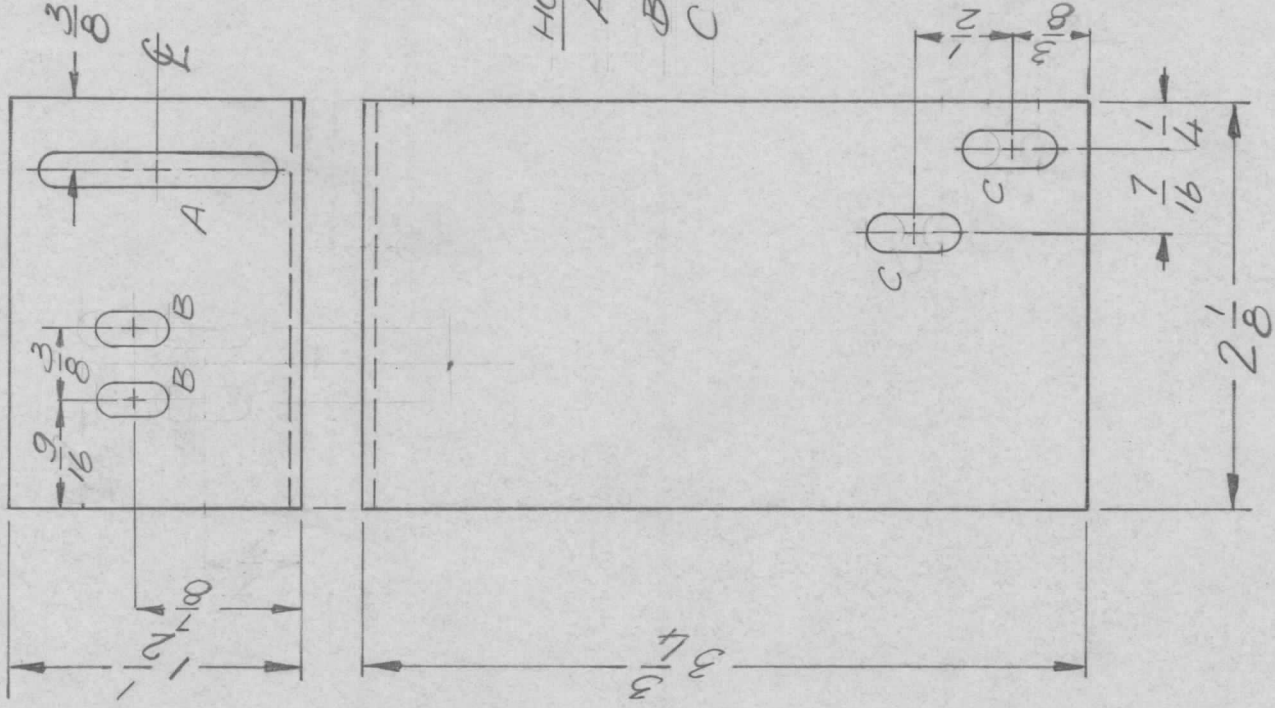
QTY	MODEL USED ON	ASS'Y NO.	LTR	DESCRIPTION	DATE	E.M.N.NO	DRAFT	CHKD	APPD
1	GRE110	BMA514	X	DIM. 3 7/16 WA 3 3/4	7-3-75		GDL		
			A	EASE MANUFACTURING	5-11-76		SBL		
				Original Release	1-19-77		GDL		*



UNLESS OTHERWISE SPECIFIED DIMENSIONS ARE IN INCHES AND INCLUDE CHEMICALLY APPLIED OR PLATED FINISHES	REQ'D	ITEM	PART NUMBER	DESCRIPTION	SYM.
DECIMALS .X ± .05 .XX ± .01 .XXX ± .005				LIST OF MATERIAL	
FRACTIONS 1/64				THE TECHNICAL MATERIEL CORP.	
TOLS. ANGLES 0°-30'				MAMARONECK, NEW YORK	
MATERIAL-081 ALUM 5052 H32				BRACKET, METER	
FINISH S404 YEL. IRIDITE					
<p>NOTICE TO PERSONS RECEIVING THIS DRAWING</p> <p>THE TECHNICAL MATERIEL CORPORATION claims proprietary right in the material disclosed hereon. This drawing is issued in confidence for engineering information only and may not be reproduced or used to manufacture anything shown hereon without permission from THE TECHNICAL MATERIEL CORPORATION to the user. This drawing is loaned for mutual assistance and is subject to recall at any time.</p>					
SIZE A	CODE IDENT. NO.	DWG NO.	ISSUE		
82679	MS6506				
SCALE 1:1				SHEET	OF

REVISIONS

QTY	MODEL USED ON	ASS'Y NO.	LTR	DESCRIPTION	DATE	E.M.N.NO	DRAFT	CHKD	APPD
1	AX5176	AX5177	Ø	ORIGINAL RELEASE	4-10-74		DV		



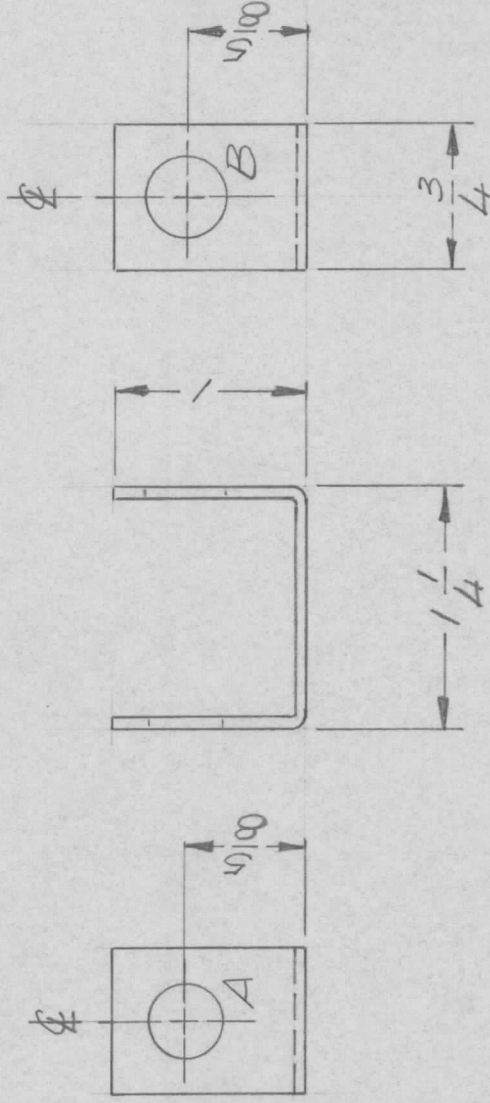
UNLESS OTHERWISE SPECIFIED DIMENSIONS ARE IN INCHES AND INCLUDE CHEMICALLY APPLIED OR PLATED FINISHES	REQ'D ITEM	PART NUMBER	DESCRIPTION	SYM.
DECIMALS	F.B.		LIST OF MATERIAL	
FRACTIONS	FINAL APPROVAL		THE TECHNICAL MATERIEL CORP.	
.X ± .05 TOLS.	<i>[Signature]</i>		MAMARONECK, NEW YORK	
.XX ± .01 ANGLES	MECH. DES.			
.XXX ± .005 ° 30'	ELECT. DES.			
MATERIAL .081	CHECKED		PLATE, RELAY	
ALUM. 5052 H32	DRAWN			
FINISH S404				
YEL. IRIDITE				

SIZE	CODE IDENT. NO.	DWG NO.	ISSUE
A	82679	MS6512	Ø
SCALE 1:1		SHEET	OF

NOTICE TO PERSONS RECEIVING THIS DRAWING
 THE TECHNICAL MATERIEL CORPORATION claims proprietary right in the material disclosed hereon. This drawing is issued in confidence for engineering information only and may not be reproduced or used to manufacture anything shown hereon without permission from THE TECHNICAL MATERIEL CORPORATION to the user. This drawing is loaned for mutual assistance and is subject to recall at any time.

APPLICATION REVISIONS

QTY	MODEL USED ON	ASS'Y NO.	LTR	DESCRIPTION	DATE	E.M.N.NO	DRAFT	CHKD	APPD
1	ATSA-3	AX5178	Ø	ORIGINAL RELEASE	4-10-74		DV		
1		AX5179							



HOLE DESCRIPTION REQ.

A — 3/8 DIA. — 1

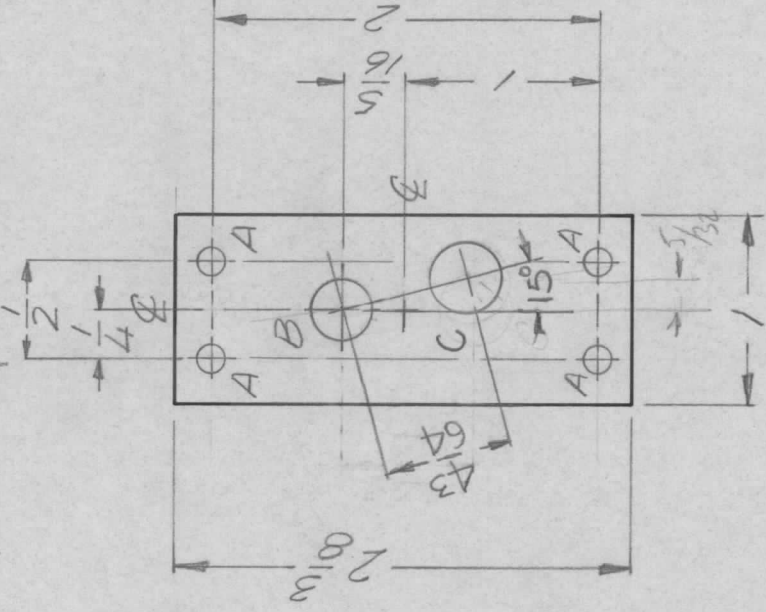
B — 1/32 DIA. — 1

REQ'D	ITEM	PART NUMBER	DESCRIPTION	SYM.
LIST OF MATERIAL				
THE TECHNICAL MATERIEL CORP. MAMARONECK, NEW YORK BRACKET, RESISTOR				
UNLESS OTHERWISE SPECIFIED DIMENSIONS ARE IN INCHES AND INCLUDE CHEMICALLY APPLIED OR PLATED FINISHES	FINAL APPROVAL	DATE	SIZE	CODE IDENT. NO.
.X ± .05 TOLS. 1/64	RS		A	82679
.XX ± .01 ANGLES 90°-30'	MECH. DES.	DATE	SCALE	DWG NO.
.XXX ± .005			1:1	MS 6515
MATERIAL 064 ALLUM 5052 H32	ELECT. DES.	DATE	ISSUE	Ø
FINISH S404 YEL IRIDITE	CHECKED	DATE		
	DRAWN	DATE		
		1/25/74		
NOTICE TO PERSONS RECEIVING THIS DRAWING THE TECHNICAL MATERIEL CORPORATION claims proprietary right in the material disclosed hereon. This drawing is issued in confidence for engineering information only and may not be reproduced or used to manufacture anything shown hereon without permission from THE TECHNICAL MATERIEL CORPORATION to the user. This drawing is loaned for mutual assistance and is subject to recall at any time.				

REVISIONS

APPLICATION

QTY	MODEL USED ON	ASS'Y NO.	LTR	DESCRIPTION	DATE	E.M.N.NO	DRAFT	CHKD	APPD
1	GPR 110	AX5186	XI	"C" HOLE RELOCATED	7-3-74		GDL		
				Ø ORIGINAL RELEASE	11-17-74		GDL		*



HOLE DESCRIPTION REQ.

- A — 9/64 DIA. — 4
- B — 5/16 DIA. — 1
- C — 3/8 DIA. — 1

UNLESS OTHERWISE SPECIFIED DIMENSIONS ARE IN INCHES AND INCLUDE CHEMICALLY APPLIED OR PLATED FINISHES	REQ'D ITEM	PART NUMBER	DESCRIPTION	SYM.
DECIMALS .X ± .05 .XX ± .01 .XXX ± .005	FINAL APPROVAL		LIST OF MATERIAL	
FRACTIONS 1/64	MECH. DES.			
TOLS. 0°-30°	ELECT. DES.			
MATERIAL: 081 ALUM. 5052 H 32	CHECKED			THE TECHNICAL MATERIEL CORP. MAMARONECK, NEW YORK
FINISH S404 YEL. IRIDITE	DRAWN			PLATE SW. REAR
NOTICE TO PERSONS RECEIVING THIS DRAWING		DATE	CODE IDENT. NO.	ISSUE
THE TECHNICAL MATERIEL CORPORATION claims proprietary right in the material disclosed hereon. This drawing is issued in confidence for engineering information only and may not be reproduced or used to manufacture anything shown hereon without permission from THE TECHNICAL MATERIEL CORPORATION to the user. This drawing is loaned for mutual assistance and is subject to recall at any time.		11/15/74	A 82679	MS 6526
		DATE	SCALE 1:1	SHEET OF
		DATE		
		DATE		
		DATE		

APPLICATION

QTY 1
 MODEL USED ON GPR110
 ASS'Y NO. AX5186

LTR

DESCRIPTION

DATE

E.M.N.NO

DRAFT

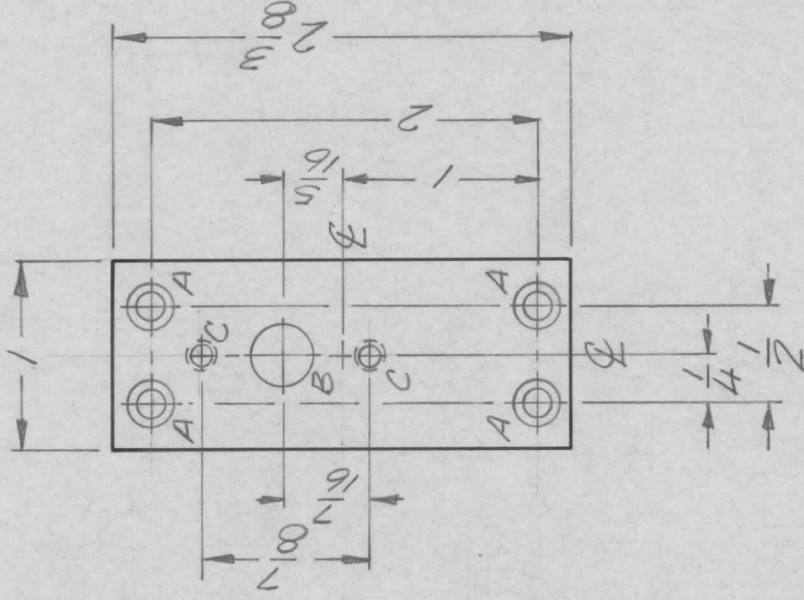
CHKD

APPD

REVISIONS

Ø Original Release 1/17 ~

*



UNLESS OTHERWISE SPECIFIED DIMENSIONS ARE IN INCHES AND INCLUDE CHEMICALLY APPLIED OR PLATED FINISHES

DECIMALS .X ± .05
 .XX ± .01
 .XXX ± .005

FRACTIONS 1/64
 TOLS. ANGLES 0° - 30°

MATERIAL .081 ALUM 5052 H32

FINISH S404 YEL IRIDITE

REQ'D ITEM	PART NUMBER	DESCRIPTION	SYM.
LIST OF MATERIAL			
THE TECHNICAL MATERIEL CORP. MAMARONECK, NEW YORK			
FINAL APPROVAL	DATE		
MECH. DES.	DATE		
ELECT. DES.	DATE		
CHECKED	DATE		
DRAWN	DATE		
		PLATE SW. FRONT	
SIZE A	CODE IDENT. NO. 82679	DWG NO. MS 6527	ISSUE
SCALE 1:1		SHEET	OF

NOTICE TO PERSONS RECEIVING THIS DRAWING
 THE TECHNICAL MATERIEL CORPORATION claims proprietary right in the material disclosed hereon. This drawing is issued in confidence for engineering information only and may not be reproduced or used to manufacture anything shown hereon without permission from THE TECHNICAL MATERIEL CORPORATION to the user. This drawing is loaned for mutual assistance and is subject to recall at any time.

APPLICATION

QTY 1

MODEL USED ON GPR 110

ASS'Y NO. BMA515

LTR XI

B HOLE WAS A-QTY ITEM IN MS 1-6-77

DESCRIPTION

Ø ORIGINAL RELEASE

DATE

1-15-77

E.M.N.NO.

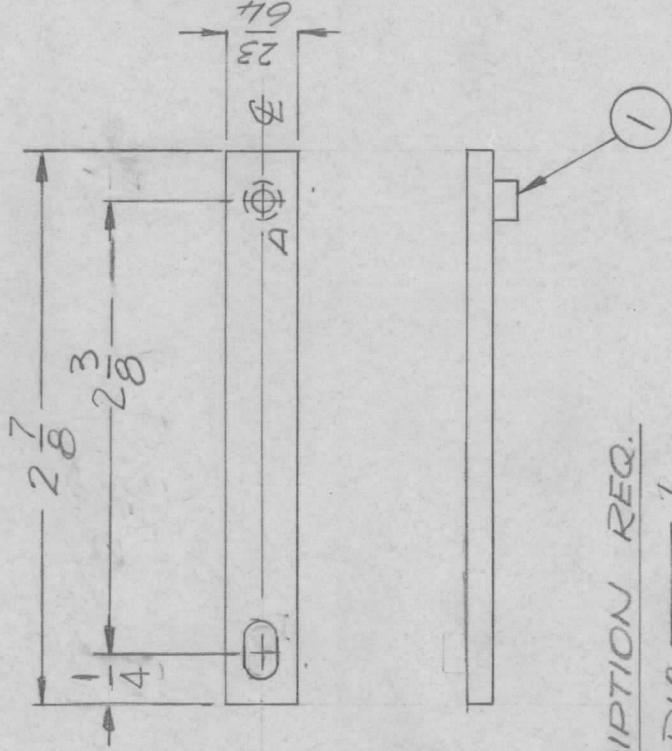
DRAFT GDL

CHKD

APPD

REVISIONS

*



HOLE DESCRIPTION REQ.

A — .189 DIA. — 1

B — 3/16 x 5/16 1

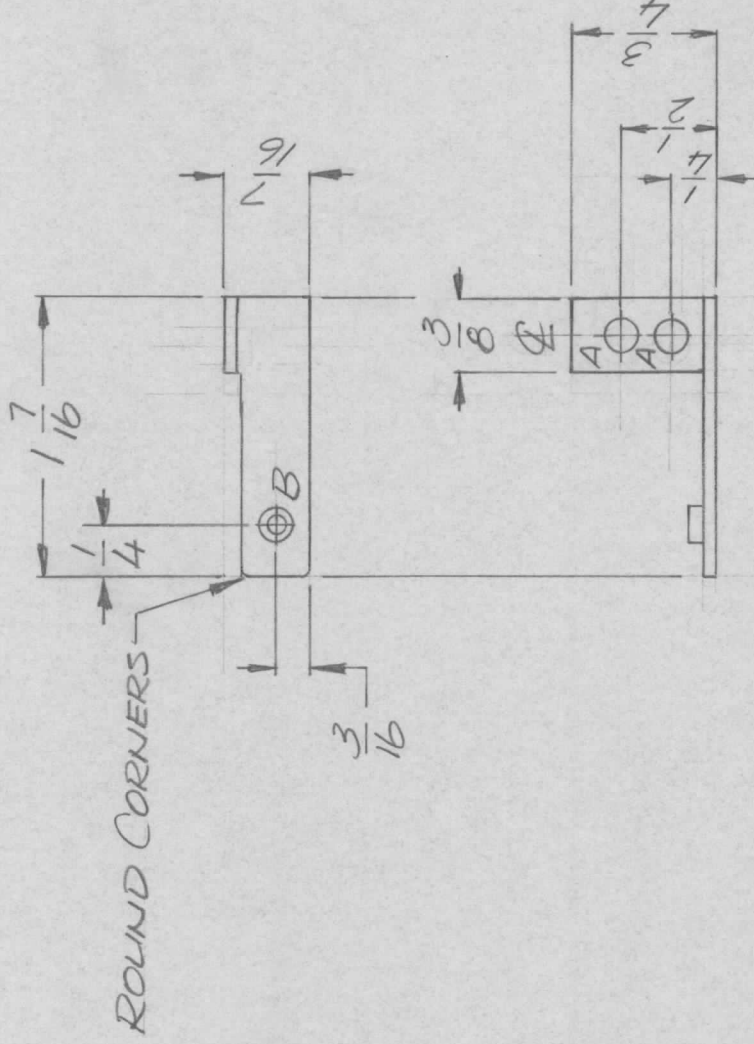
1	1	TE 108-8	STANDOFF, RIVET	A
REQ'D ITEM	PART NUMBER	DESCRIPTION		
LIST OF MATERIAL				
THE TECHNICAL MATERIEL CORP. MAMARONECK, NEW YORK				
BAR, SUPPORT TOP				
FINAL APPROVAL	00B	DATE	1/19/77	
MECH. DES.		DATE		
ELECT. DES.		DATE		
CHECKED		DATE		
DRAWN	9E	DATE	1/19/74	
UNLESS OTHERWISE SPECIFIED DIMENSIONS ARE IN INCHES AND INCLUDE CHEMICALLY APPLIED OR PLATED FINISHES				
DECIMALS .X ± .05 .XX ± .01 .XXX ± .005				
FRACTIONS 1/64				
TOLS. ANGLES 0°-30°				
MATERIAL 1/8 ALUM 5052 H32				
FINISH S404 YEL IRIDITE				
SIZE	CODE IDENT. NO.	DWG NO.	ISSUE	
A	82679	MS6529	Ø	
SCALE	1:1	SHEET	OF	

NOTICE TO PERSONS RECEIVING THIS DRAWING
THE TECHNICAL MATERIEL CORPORATION claims proprietary right in the material disclosed hereon. This drawing is issued in confidence for engineering information only and may not be reproduced or used to manufacture anything shown hereon without permission from THE TECHNICAL MATERIEL CORPORATION to the user. This drawing is loaned for mutual assistance and is subject to recall at any time.

REVISIONS

APPLICATION

QTY	MODEL USED ON	ASS'Y NO.	LTR	DESCRIPTION	DATE	E.M.N.NO	DRAFT	CHKD	APPD
1	ATSA-3	AX5177	Ø	ORIGINAL RELEASE	4-10-74		DV		



HOLE DESCRIPTION REQ.

A - .11/64 DIA. — 2
 B - .191-.194 DIA. — 1

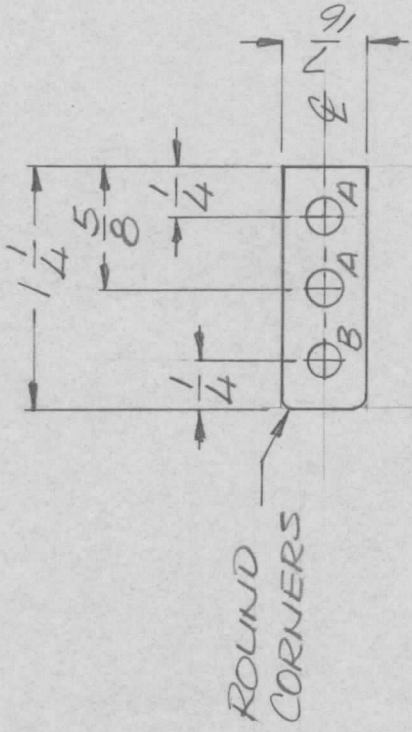
1	1	NT1290632	NUT, ROUND	B
REQ'D ITEM	PART NUMBER	DESCRIPTION	SYM.	
F. B.				
LIST OF MATERIAL				
THE TECHNICAL MATERIEL CORP. MAMARONECK, NEW YORK				
CONTACT, TOP				
FINAL APPROVAL	DATE			
MECH. DES.	DATE			
ELECT. DES.	DATE			
CHECKED	DATE			
DRAWN	DATE			

SIZE	CODE IDENT. NO.	DWG NO.	ISSUE
A	82679	MS 6532	Ø
SCALE	1:1	SHEET	OF

NOTICE TO PERSONS RECEIVING THIS DRAWING
 THE TECHNICAL MATERIEL CORPORATION claims proprietary right in the material disclosed hereon. This drawing is issued in confidence for engineering information only and may not be reproduced or used to manufacture anything shown hereon without permission from THE TECHNICAL MATERIEL CORPORATION to the user. This drawing is loaned for mutual assistance and is subject to recall at any time.

REVISIONS

QTY	MODEL USED ON	ASS'Y NO.	LTR	DESCRIPTION	DATE	E.M.N.NO	DRAFT	CHKD	APPD
1	ATSA-3	AX5177	Ø	ORIGINAL RELEASE	4-10-74		DV		



HOLE DESCRIPTION REQ.

- A — 3/16 DIA. — 2
- B — 1/64 DIA. — 1

MATERIAL : .030 BRLM. COPP.
FINISH : NATURAL

REQ'D	ITEM	PART NUMBER	DESCRIPTION	SYM.
LIST OF MATERIAL				
F.B.				
UNLESS OTHERWISE SPECIFIED DIMENSIONS ARE IN INCHES AND INCLUDE CHEMICALLY APPLIED OR PLATED FINISHES				
DECIMALS			FRACTIONS	
.X ± .05			1/64	
.XX ± .01			ANGLES	
.XXX ± .005			0° .30'	
MATERIAL AS NOTED				
FINISH AS NOTED				
THE TECHNICAL MATERIEL CORP. MAMARONECK, NEW YORK				
CONTACT, BOTTOM				
SIZE	CODE IDENT. NO.	DWG NO.	ISSUE	
A	82679	MS 6534	Ø	
SCALE	1:1	SHEET	OF	

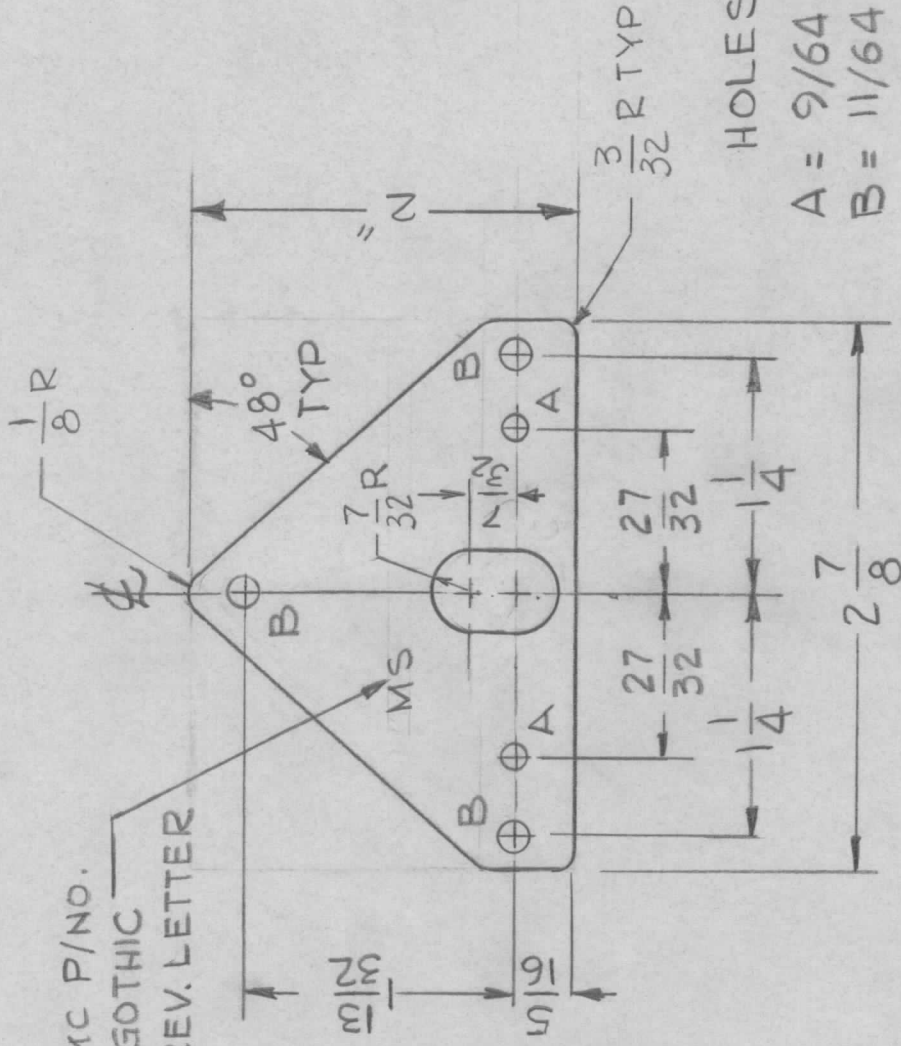
NOTICE TO PERSONS RECEIVING THIS DRAWING
 THE TECHNICAL MATERIEL CORPORATION claims proprietary right in the material disclosed hereon. This drawing is issued in confidence for engineering information only and may not be reproduced or used to manufacture anything shown hereon without permission from THE TECHNICAL MATERIEL CORPORATION to the user. This drawing is loaned for mutual assistance and is subject to recall at any time.

REVISIONS

APPLICATION

QTY	MODEL USED ON	ASS'Y NO.	LTR	DESCRIPTION	DATE	E.M.N.NO	DRAFT	CHKD	APPD
1	TMA 1K	AX782	X	EXP. RELEASE	10-1-74				
			X1	1/8R & 3/16R ADD	10-2-74				
			Ø	ORIG RELEASE FOR PROD	3/13/75				CK

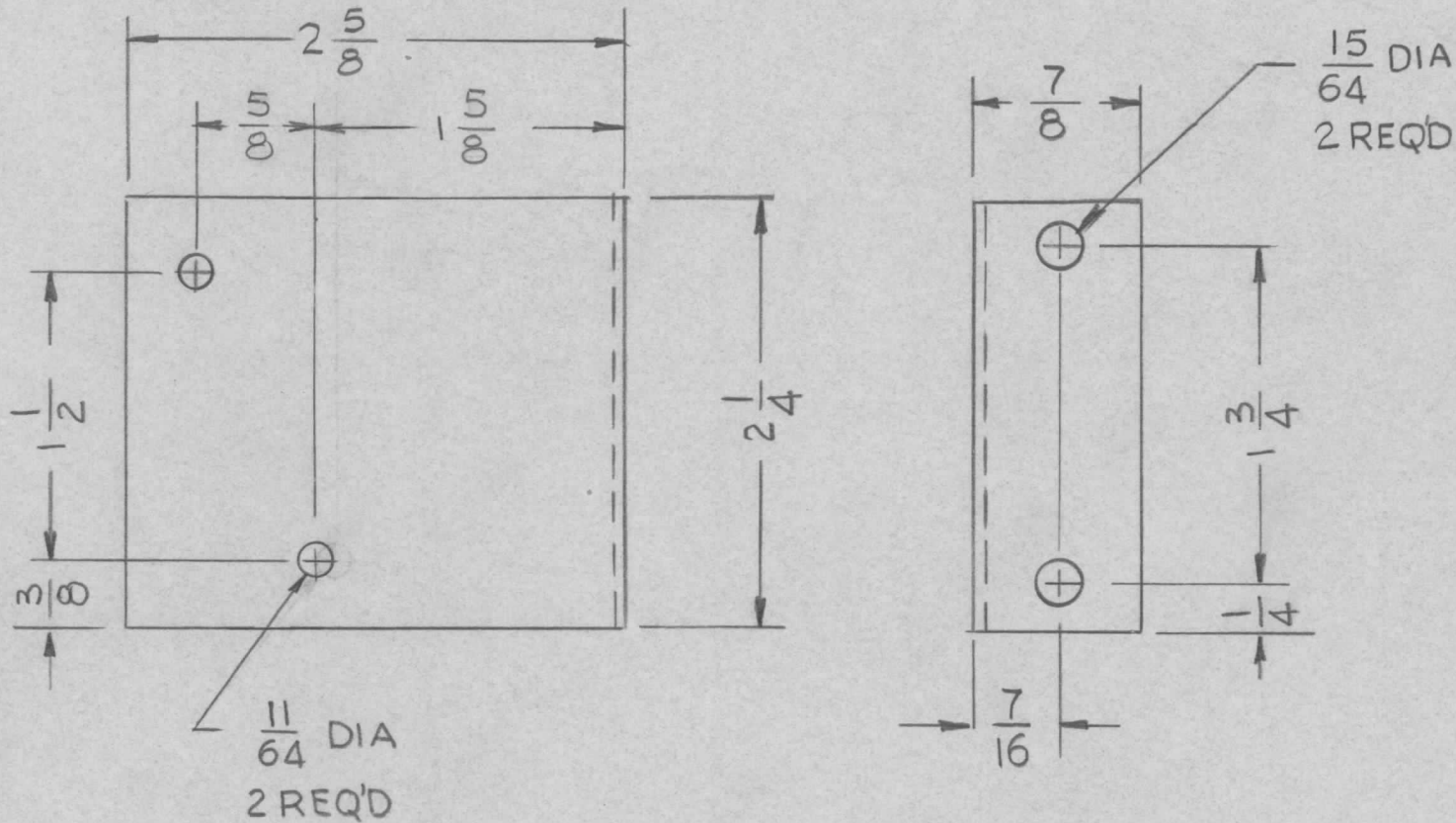
MARK TMC P/NO.
1/8 HIGH GOTHIC
W/LAST REV. LETTER



HOLES:
A = 9/64 2 REQ.
B = 11/64 3 REQ.

UNLESS OTHERWISE SPECIFIED DIMENSIONS ARE IN INCHES AND INCLUDE CHEMICALLY APPLIED OR PLATED FINISHES	REQ'D	ITEM	PART NUMBER	DESCRIPTION	SYM.
DECIMALS .X ± .05 .XX ± .01 .XXX ± .005 FRACTIONS 1/64 ANGLES 0° .30'				LIST OF MATERIAL	
FINAL APPROVAL MECH. DES. ELECT. DES. CHECKED DRAWN				THE TECHNICAL MATERIEL CORP. MAMARONECK, NEW YORK FRONT PLATE MTG MOTOR	
DATE DATE DATE DATE DATE					
ODB F. IANNUZZI G. DE LUCA					
MATERIAL 1/8 THK ALUM 5052-H32 FINISH S404 YEL IRIDITE					
NOTICE TO PERSONS RECEIVING THIS DRAWING THE TECHNICAL MATERIEL CORPORATION claims proprietary right in the material disclosed hereon. This drawing is issued in confidence for engineering information only and may not be reproduced or used to manufacture anything shown hereon without permission from THE TECHNICAL MATERIEL CORPORATION to the user. This drawing is loaned for mutual assistance and is subject to recall at any time.	SIZE	CODE IDENT. NO.	DWG NO.	ISSUE	
A	82679	MS 6551		Ø	
SCALE	SHEET	OF			

REQ. PER UNIT	USED ON			MS6553	∅
	MODEL	ASS'Y. NO.	DATE		
1	GPTRIK E/4	RAK141-1	6-13-74		



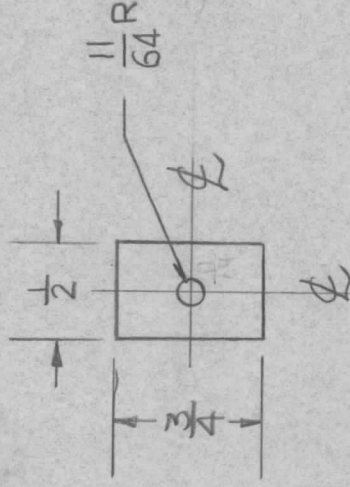
REQ.	ITEM	PART NO.	DESCRIPTION				SYMBOL
		.064 THK	THE TECHNICAL MATERIEL CORP.				
		STOCK SIZE	MAMARONECK, NEW YORK				
		ALUMINIUM	BRACKET MTG ANTENNA				
		MATERIAL	SWITCH				
∅	ORIGINAL REL FOR PROD	8/76	CL	MS	*		
SYM	DESCRIPTION	DATE	CH. NO.	DRAFTS	CHECKER	ENG. APP.	
UNLESS OTHERWISE SPECIFIED DIMENSIONS ARE IN INCHES AND INCLUDE CHEMICALLY APPLIED OR PLATED FINISHES		SCALE		1:1			
DECIMALS	TOLERANCES	FRACTIONS	CODE	5052-H32			
.X ± .05		± 1/64		TYPE & TEMPER			
.XX ± .01		ANGLES		HEAT TREAT. SPEC.			
.XXX ± .005		± 0° 30'		DRAWN			
				S404 YEL IRIDITE			
				FINISH & SPEC. NO.			
				ELEC. DES. APP.			
				MECH. DES. APP.			
				MS6553		∅	
				G. Belina		8-12-76	
				*MS			

APPLICATION

QTY	MODEL USED ON	ASS'Y NO.	LTR
1	TMA-1K	BMA-520	X

REVISIONS

DESCRIPTION	DATE	E.M.N.NO	DRAFT	CHKD	APPD
EXP. RELEASE	10-2-74				
ORIG. RELEASE FOR PROD	3/13/75		A		



UNLESS OTHERWISE SPECIFIED
DIMENSIONS ARE IN INCHES
AND INCLUDE CHEMICALLY APPLIED
OR PLATED FINISHES

DECIMALS FRACTIONS
.X ± .05 TOLS. 1/64
.XX ± .01 ANGLES
.XXX ± .005 0°-30'

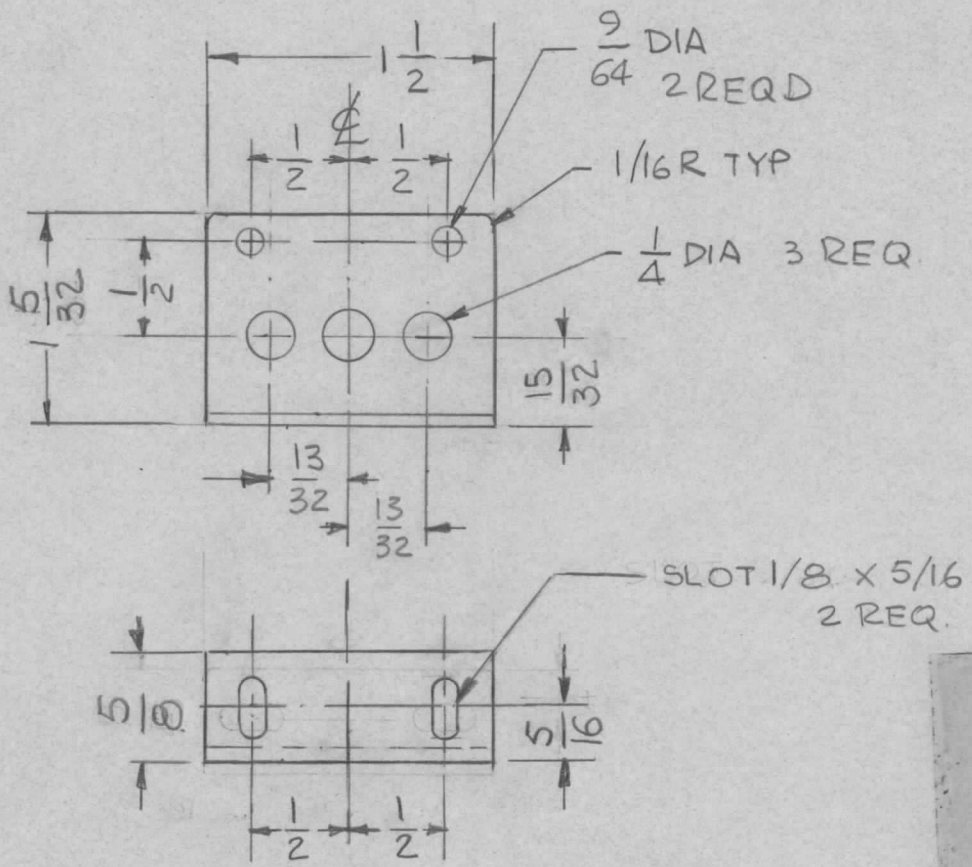
MATERIAL: 940THK
COPPER

FINISH -

NOTICE TO PERSONS RECEIVING THIS DRAWING
THE TECHNICAL MATERIEL CORPORATION claims proprietary right in the material disclosed hereon. This drawing is issued in confidence for engineering information only and may not be reproduced or used to manufacture anything shown hereon without permission from THE TECHNICAL MATERIEL CORPORATION to the user. This drawing is loaned for mutual assistance and is subject to recall at any time.

REQ'D	ITEM	PART NUMBER	DESCRIPTION	SYM.
LIST OF MATERIAL				
THE TECHNICAL MATERIEL CORP. MAMARONECK, NEW YORK				
GRID GND PLATE CONN.				
FINAL APPROVAL	DATE			
<i>FB</i>	3/14/75			
MECH. DES.	DATE			
F. IANNUZZI	2-7-75			
ELECT. DES.	DATE			
CHECKED	DATE			
F. IANNUZZI	2-14-74			
DRAWN	DATE			
G. DE LUCA				
SIZE	CODE IDENT. NO.	DWG NO.	ISSUE	
A	82679	MS 6554	Ø	
SCALE	1:1	SHEET	OF	

REQ. PER UNIT	USED ON			MS 6561	Ø
	MODEL	ASS'Y. NO.	DATE		
1	GPR 110 (KIT 404)	A5606	9-23-74		



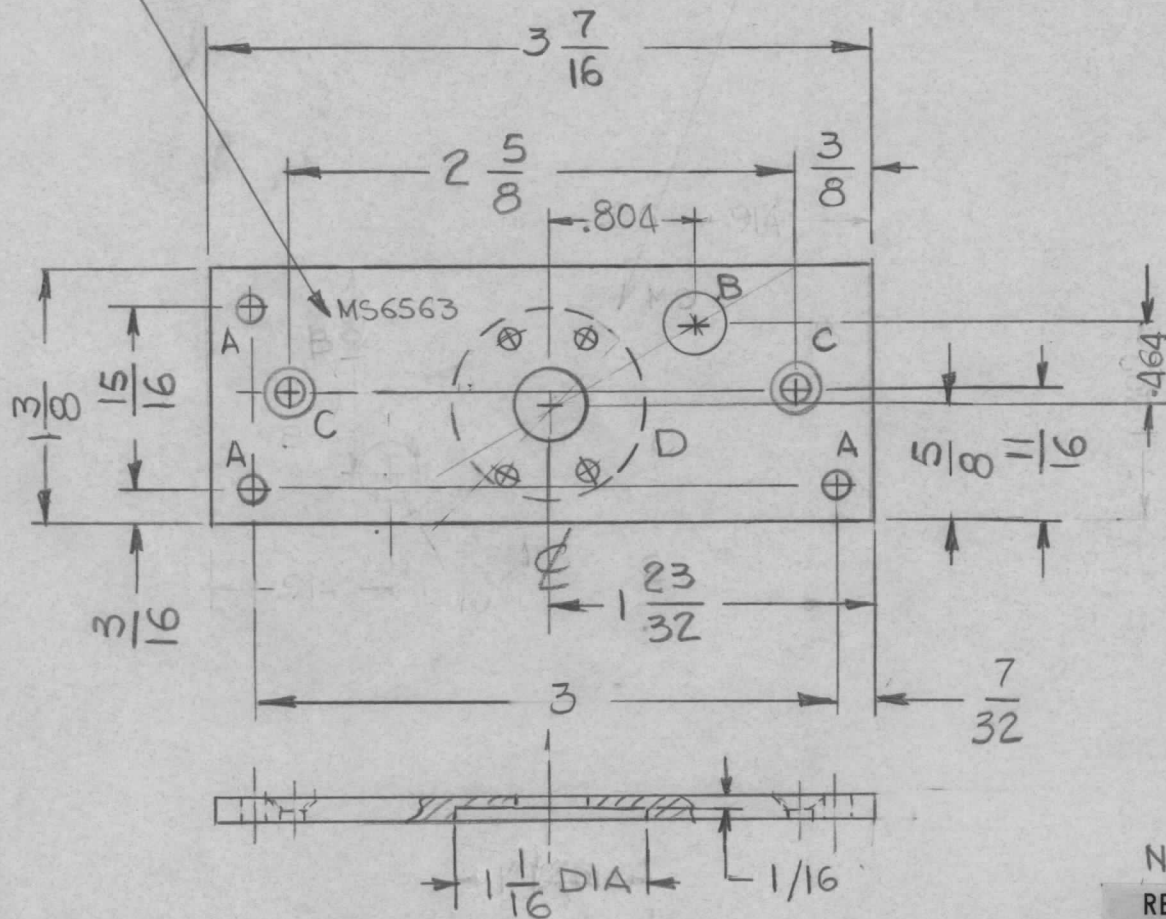
UNLESS OTHERWISE SPECIFIED:

1. USE MATERIAL THICKNESS FOR MAXIMUM RADIUS ON ALL BENDS.
2. ALL ANGULAR BENDS 90 DEGREES.
3. REMOVE ALL BURRS AND SHARP EDGES.

REQ.	ITEM	PART NO.	DESCRIPTION				SYMBOL		
Ø	ORIG REL PROD	5-20-74	JP	THE TECHNICAL MATERIEL CORP. MAMARONECK, NEW YORK					
X	EXP. RELEASE	9-23-74		STOCK SIZE .064 THK ALUM.				BRACKET DETENT	
SYM	DESCRIPTION	DATE	CH. NO.	DRAFTS	CHECKER	ENG. APP.	MATERIAL		
UNLESS OTHERWISE SPECIFIED DIMENSIONS ARE IN INCHES AND INCLUDE CHEMICALLY APPLIED OR PLATED FINISHES			SCALE 1:1				5052-H32	G. Debus	Ø
DECIMALS .X ± .05 .XX ± .01 .XXX ± .005			TOLERANCES				TYPE & TEMPER S404 YEL IRIDITE		
FRACTIONS ± 1/64 ANGLES ± 0° 30'			CODE				HEAT TREAT. SPEC.		
							DRAWN		
							CHECKED		
							FINAL APPROVAL		
							FINISH & SPEC. NO.		
							ELEC. DES. APP.		
							MECH. DES. APP.		
									MS 6561 Ø

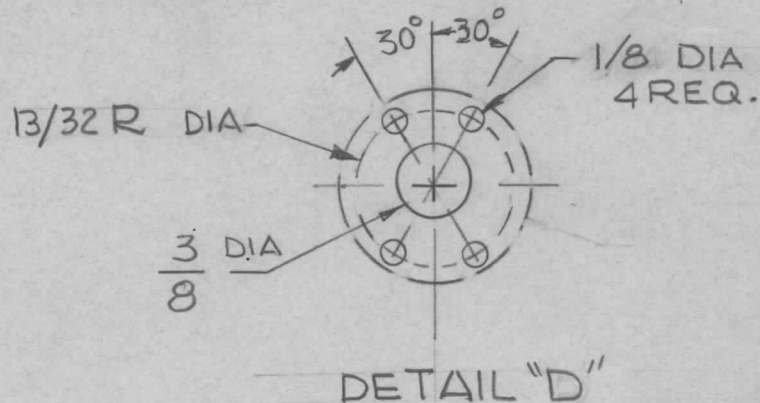
MARK TMC PART NUMBER
1/8 HIGH GOTHIC WITH LATEST

REQ. PER UNIT	USED ON		MS6563	Ø
	MODEL	ASS'Y. NO.		
1	GPR110	A5623		



HOLES °

- A = 9/64 DIA 3 REQ.
- B = 5/16 DIA 1 REQ.
- C = .144 DIA CT'SK 82° TO .244 DIA 2 REQ.
- D - SEE DETAIL



NOTE:

REMOVE ALL BURRS AND SHARP EDGES.

REQ. ITEM	PART NO.	DESCRIPTION	SYMBOL				
	1/8 THK	THE TECHNICAL MATERIEL CORP. MAMARONECK, NEW YORK	Ø				
	STOCK SIZE						
	5032-H32 ALUM	PLATE MTG MOTOR	Ø				
	MATERIAL						
SYM	DESCRIPTION	DATE	CH. NO.	DRAFTS	CHECKER	ENG. APP.	
Ø	ORIG. REL. PROD	5-2075			JP		
X	EXP. RELEASE	9-24-74			SDK		
UNLESS OTHERWISE SPECIFIED DIMENSIONS ARE IN INCHES AND INCLUDE CHEMICALLY APPLIED OR PLATED FINISHES		SCALE					
		1:1					
DECIMALS .X ± .05 .XX ± .01 .XXX ± .005	TOLERANCES	FRACTIONS ± 1/64 ANGLES ± 0° 30'	CODE				
				TYPE & TEMPER		HEAT TREAT. SPEC.	
				S404 YEL IRIDITE			
				FINISH & SPEC. NO.		ELEC. DES. APP.	MECH. DES. APP.
							MS6563 Ø

APPLICATION

QTY MODEL USED ON ASS'Y NO.

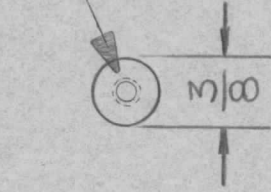
2 A5611

LTR

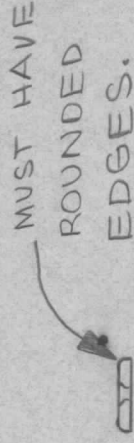
X
Ø

REVISIONS

DESCRIPTION	DATE	E.M.N.NO	DRAFT	CHKD	APPD
EXP. RELEASE	3/13/75				
ORIG. RELEASE FOR PROD					



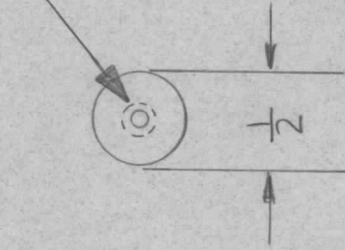
#6 COUNTERSINK
.144 DIA. HOLE
82° C'SNK TO .284
DIA.



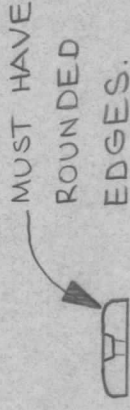
SIDE
VIEW

MSG574-1 (USED ON A5612)

QTY
1



#6 COUNTERSINK
.144 DIA. HOLE
82° C'SNK TO
.284 DIA.



SIDE
VIEW

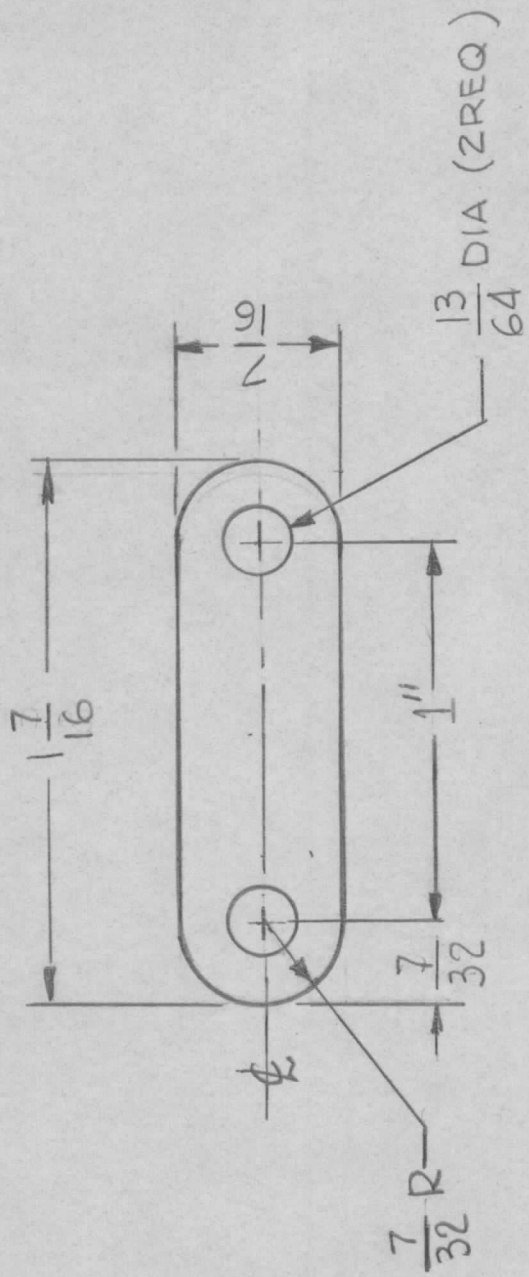
MSG574-2 (USED ON A5611)

UNLESS OTHERWISE SPECIFIED DIMENSIONS ARE IN INCHES AND INCLUDE CHEMICALLY APPLIED OR PLATED FINISHES	REQ'D	ITEM	PART NUMBER	DESCRIPTION	SYM.
DECIMALS .X ± .05 .XX ± .01 .XXX ± .005				LIST OF MATERIAL	
FRACTIONS 1/64 ANGLES 0°-30'					
MATERIAL 1/16 BRASS	FINAL APPROVAL			THE TECHNICAL MATERIEL CORP. MAMARONECK, NEW YORK	
FINISH	MECH. DES.	F. JANNUZZI	DATE 8/18/74	PLATE COIL AND CAPACITOR PLATES (OUTPUT COUPLER)	
	ELECT. DES.		DATE 2-7-75		
	CHECKED	F. JANNUZZI	DATE 12-14-74		
	DRAWN	F. JANNUZZI	DATE 1/19/74		
NOTICE TO PERSONS RECEIVING THIS DRAWING				CODE IDENT. NO.	ISSUE
THE TECHNICAL MATERIEL CORPORATION claims proprietary right in the material disclosed hereon. This drawing is issued in confidence for engineering information only and may not be reproduced or used to manufacture anything shown hereon without permission from THE TECHNICAL MATERIEL CORPORATION to the user. This drawing is loaned for mutual assistance and is subject to recall at any time.				A 82679	Ø
				SIZE	OF
				SCALE	
				DWG NO.	
				MS 6574 -	
				SHEET	

REVISIONS

APPLICATION

QTY	MODEL USED ON	ASS'Y NO.	LTR	DESCRIPTION	DATE	E.M.N.NO	DRAFT	CHKD	APPD
1	HFL-100	A5605	X	EXP. RELEASE	10-12-74		G.D.L		
			Ø	ORIGINAL RELEASE	1/2/75		D.L.		



UNLESS OTHERWISE SPECIFIED DIMENSIONS ARE IN INCHES AND INCLUDE CHEMICALLY APPLIED OR PLATED FINISHES	REQ'D ITEM	PART NUMBER	DESCRIPTION	SYM.
DECIMALS			LIST OF MATERIAL	
FRACTIONS				
.X ± .05	FINAL APPROVAL			
.XX ± .01	MECH. DES.			
.XXX ± .005	ELECT. DES.			
	CHECKED			
	DRAWN			
MATERIAL .031 THK AL 5052 -H32			THE TECHNICAL MATERIEL CORP. MAMARONECK, NEW YORK	
FINISH S404			PLATE, CAP CONNECTION	
YEL. IRIDITE				

SIZE	CODE IDENT. NO.	DWG NO.	ISSUE
A	82679	MS6576	Ø
SCALE 2:1		SHEET	OF

NOTICE TO PERSONS RECEIVING THIS DRAWING
 THE TECHNICAL MATERIEL CORPORATION claims proprietary right in the material disclosed hereon. This drawing is issued in confidence for engineering information only and may not be reproduced or used to manufacture anything shown hereon without permission from THE TECHNICAL MATERIEL CORPORATION to the user. This drawing is loaned for mutual assistance and is subject to recall at any time.

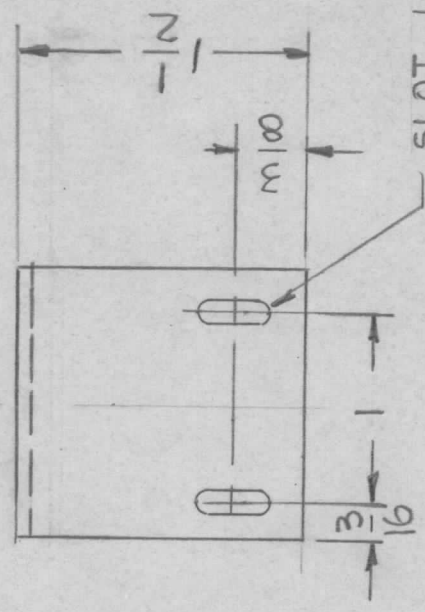
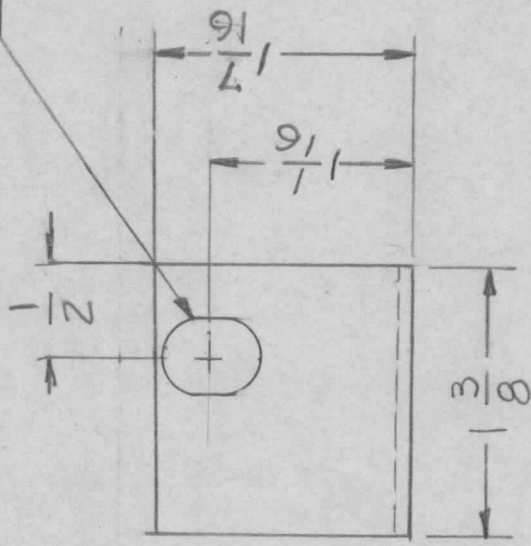
APPLICATION

QTY	MODEL USED ON	ASS'Y NO.
1	ATSA-3	

LTR	DESCRIPTION	DATE	E.M.N.NO	DRAFT	CHKD	APPD
X	EXP. RELEASE	11-4-74		GDL		
X1	15/16 WAS 1/2 & 1/2 WAS 15/16	11-18-74				
X2	17/16 WAS 15/16	7-17-76		YJB		
Ø	ORIGINAL RELEASE FOR PROD	8/76		CL	YJB	*

REVISIONS

SLOT 3/8 X 1/2



SLOT 1/8 X 3/8
2 REQ

UNLESS OTHERWISE SPECIFIED DIMENSIONS ARE IN INCHES AND INCLUDE CHEMICALLY APPLIED OR PLATED FINISHES

DECIMALS .X ± .05
.XX ± .01
.XXX ± .005

FRACTIONS 1/64

TOLS. ANGLES 0° .30'

MATERIAL .064 THK ALUMINUM 5052-H32

FINISH S404

YEL IRIDITE

REQ'D	ITEM	PART NUMBER	DESCRIPTION	SYM.
LIST OF MATERIAL				
THE TECHNICAL MATERIEL CORP. MAMARONECK, NEW YORK				
POT BRACKET				

FINAL APPROVAL	DATE
<i>[Signature]</i>	8-12-76
MECH. DES.	DATE
ELECT. DES.	DATE
CHECKED	DATE
DRAWN	DATE
GDL	11-4-74

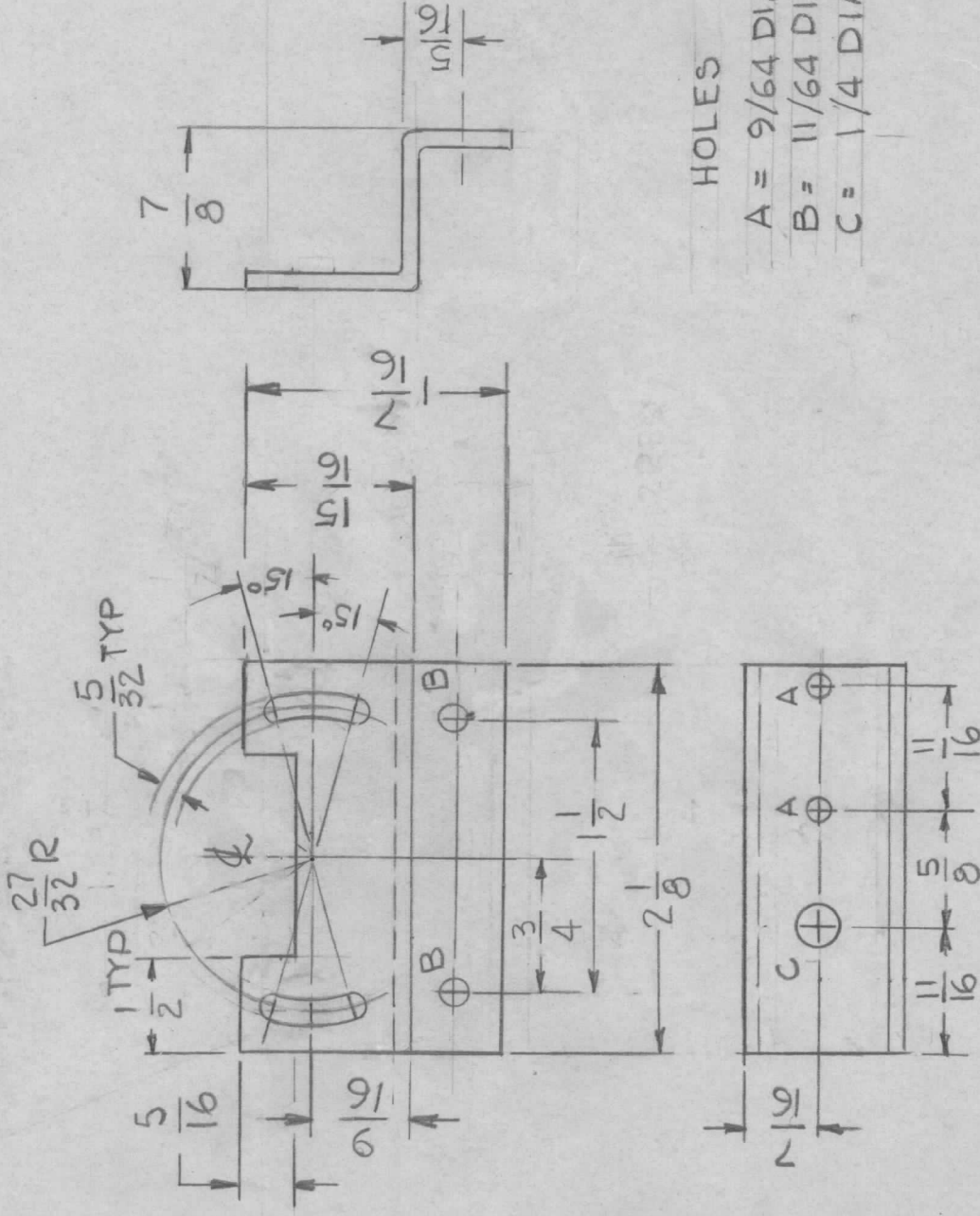
NOTICE TO PERSONS RECEIVING THIS DRAWING
THE TECHNICAL MATERIEL CORPORATION claims proprietary right in the material disclosed hereon. This drawing is issued in confidence for engineering information only and may not be reproduced or used to manufacture anything shown hereon without permission from THE TECHNICAL MATERIEL CORPORATION to the user. This drawing is loaned for mutual assistance and is subject to recall at any time.

SIZE	CODE IDENT. NO.	DWG NO.	ISSUE
A	82679	MS6581	Ø
SCALE	1:1	SHEET	OF

APPLICATION

REVISIONS

QTY	MODEL USED ON	ASSY NO.	LTR	DESCRIPTION	DATE	E.M.N.NO	DRAFT	CHKD	APPD
1	TMA-1K	A5613	X	EXP. RELEASE					
			Ø	ORIG. RELEASE FOR PROD.	3/13/75		CL		



UNLESS OTHERWISE SPECIFIED
 DIMENSIONS ARE IN INCHES
 AND INCLUDE CHEMICALLY APPLIED
 OR PLATED FINISHES

DECIMALS
 X ± .05
 .XX ± .01
 .XXX ± .005

FRACTIONS
 1/64
 ANGLES
 0° .30°

MATERIAL .081 THK
 ALY 5052-H32

FINISH S404

VEL IRIDITE

REQ'D ITEM PART NUMBER

DESCRIPTION

SYM.

LIST OF MATERIAL

FINAL APPROVAL	DATE	MECH. DES.	DATE	ELECT. DES.	DATE	CHECKED	DATE	DRAWN	DATE
<i>[Signature]</i>	3/13/75	F. IANNUZZI	3-13-75			F. IANNUZZI	3-13-75	G. DEL	11-8-74

THE TECHNICAL MATERIEL CORP.

MAMARONECK, NEW YORK

BRACKET MTG LEDEX
 (REAR)

NOTICE TO PERSONS RECEIVING THIS DRAWING
 THE TECHNICAL MATERIEL CORPORATION claims proprietary right in the material disclosed hereon. This drawing is issued in confidence for engineering information only and may not be reproduced or used to manufacture anything shown hereon without permission from THE TECHNICAL MATERIEL CORPORATION to the user. This drawing is loaned for mutual assistance and is subject to recall at any time.

SIZE A CODE IDENT. NO. DWG NO.

82679 MS6582

ISSUE

Ø

SCALE 1:1

SHEET

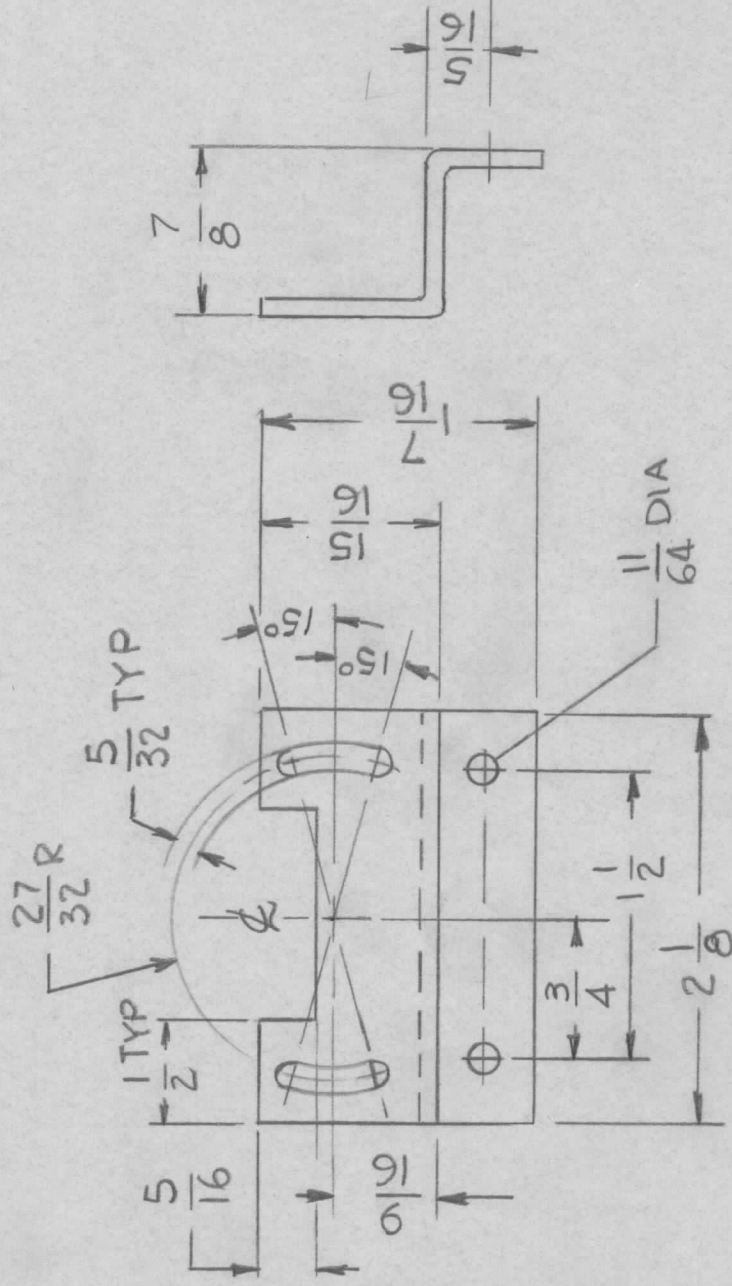
OF

APPLICATION

QTY	MODEL USED ON	ASS'Y NO.	LTR
1	TMA-1K	A5613	X

REVISIONS

DESCRIPTION	DATE	E.M.N.NO	DRAFT	CHKD	APPD
EXP. RELEASE	2-7-75		J.D.		
ORIG RELEASE FOR PROD	3/13/75		CL		



UNLESS OTHERWISE SPECIFIED
DIMENSIONS ARE IN INCHES
AND INCLUDE CHEMICALLY APPLIED
OR PLATED FINISHES

DECIMALS
X ± .05
.XX ± .01
.XXX ± .005

FRACTIONS
1/64
ANGLES
0° .30°

MATERIAL .081 THK
ALUM 5052-H32

FINISH S404

VEL IRIDITE

REQ'D	ITEM	PART NUMBER	DESCRIPTION	SYM.
-------	------	-------------	-------------	------

LIST OF MATERIAL

FINAL APPROVAL	DATE	THE TECHNICAL MATERIEL CORP.		
MECH. DES.	DATE	MAMARONECK, NEW YORK		
ELECT. DES.	DATE	BRACKET MTG LEDEX		
CHECKED	DATE	(FRONT)		
DRAWN	DATE	SIZE	CODE IDENT. NO.	DWG NO.
F. IANNUZZI	2-7-75	A	82679	MS 6583
G. DEL	11-14-74	SCALE	1:1	SHEET
				OF

NOTICE TO PERSONS RECEIVING THIS DRAWING

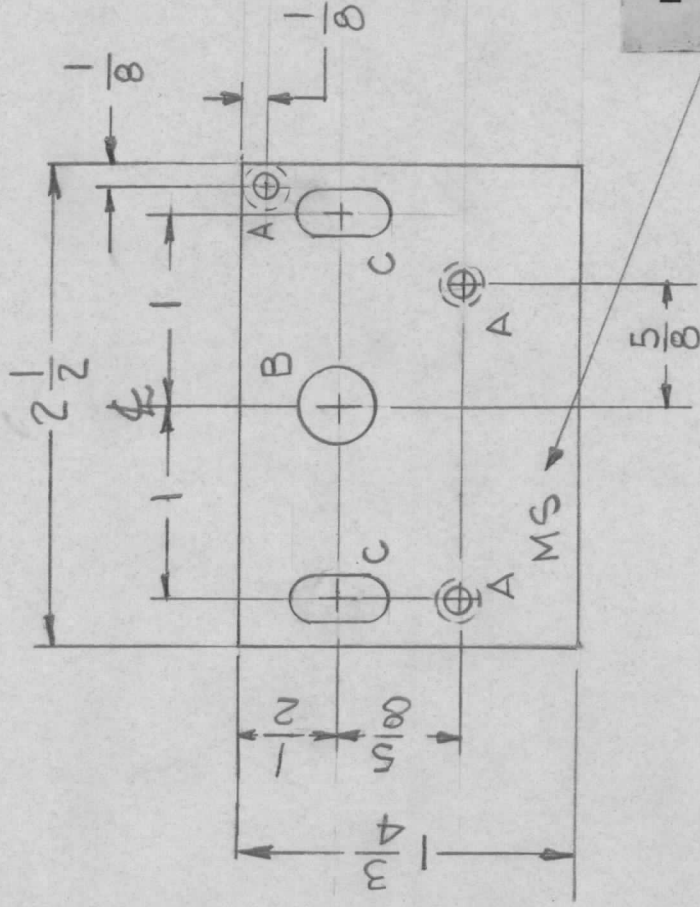
THE TECHNICAL MATERIEL CORPORATION claims proprietary right in the material disclosed hereon. This drawing is issued in confidence for engineering information only and may not be reproduced or used to manufacture anything shown hereon without permission from THE TECHNICAL MATERIEL CORPORATION to the user. This drawing is loaned for mutual assistance and is subject to recall at any time.

APPLICATION

QTY	MODEL USED ON	ASSY NO.	LTR
1	ATSA-3	AX5186	X
			Ø

REVISIONS

DESCRIPTION	DATE	E.M.N.NO	DRAFT	CHKD	APPD
EXP. RELEASE	11-12-74				
ORIGINAL RELEASE FOR PROD	8/76	+	CL	998	*



HOLES:

- A = .144 DIA C'ITSK 82° TO .284 DIA (3 REQ)
- B = .13/32 DIA (1 REQ)
- C = 1/4 X 1/2 SLOT (2 REQ)

UNLESS OTHERWISE SPECIFIED DIMENSIONS ARE IN INCHES AND INCLUDE CHEMICALLY APPLIED OR PLATED FINISHES

DECIMALS FRACTIONS
 X ± .05 TOLS. 1/64
 .XX ± .01 ANGLES 90°
 .XXX ± .005

MATERIAL 1/8 THK
 ALUM 5052-H32

FINISH S404

YEL IRIDITE

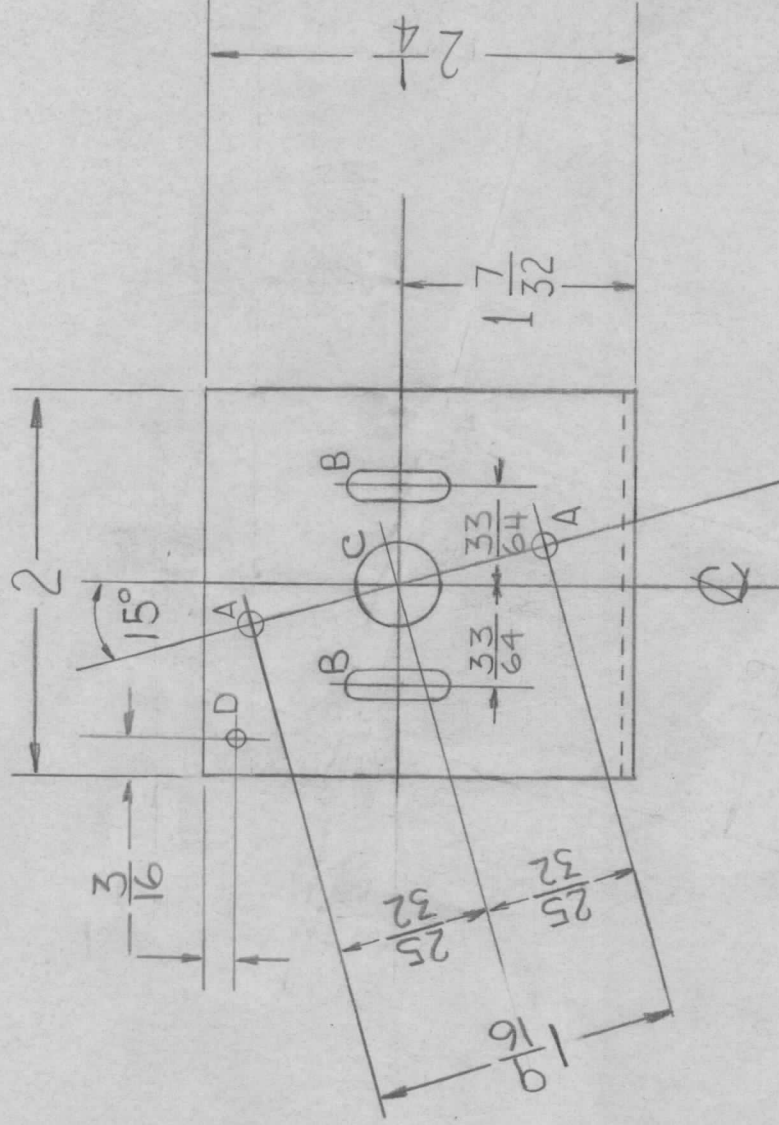
NOTICE TO PERSONS RECEIVING THIS DRAWING
 THE TECHNICAL MATERIEL CORPORATION claims proprietary right in the material disclosed hereon. This drawing is issued in confidence for engineering information only and may not be reproduced or used to manufacture anything shown hereon without permission from THE TECHNICAL MATERIEL CORPORATION to the user. This drawing is loaned for mutual assistance and is subject to recall at any time.

REQ'D	ITEM	PART NUMBER	DESCRIPTION	SYM.
LIST OF MATERIAL				
THE TECHNICAL MATERIEL CORP. MAMARONECK, NEW YORK				
PLATE, MTG COMPONENT				
FINAL APPROVAL	DATE	DATE		
<i>[Signature]</i>	8-12-76	8-12-76		
MECH. DES.	DATE	DATE		
ELECT. DES.	DATE	DATE		
CHECKED	DATE	DATE		
DRAWN	G.D.L	11-12-74		
SIZE A		CODE IDENT. NO. 82679	DWG NO. MS 6584	ISSUE Ø
SCALE 1:1		SHEET	OF	

APPLICATION

REVISIONS

QTY	MODEL USED ON	ASS'Y NO.	LTR	DESCRIPTION	DATE	E.M.N.NO	DRAFT	CHKD	APPD
1	HFL-100		Ø	ORIGINAL RELEASE	1/2/95		D.I.		



HOLES

A- 9/64 4REQ
 B- SLOT 1/8 x 3/8
 2REQ
 C- 7/16 1REQ
 D- 7/64 1REQ

MARK TMC PART NUMBER
 1/8 HIGH GOTHIC WITH LATEST
 REVISION LETTER ON REAR OF PANEL

UNLESS OTHERWISE SPECIFIED
 DIMENSIONS ARE IN INCHES
 AND INCLUDE CHEMICALLY APPLIED
 OR PLATED FINISHES

DECIMALS FRACTIONS
 X ± .05 1/64
 .XX ± .01 ANGLES
 .XXX ± .005 0° .30°

MATERIAL 5052-
 0.64 ALY. H32

FINISH S404
 YELL IRIDITED

REQ'D	ITEM	PART NUMBER	DESCRIPTION	SYM.
LIST OF MATERIAL				

FINAL APPROVAL [Signature]	DATE 12/31/74
MECH. DES. F. IANNUZZI	DATE 12-31-74
ELECT. DES.	DATE
CHECKED	DATE
DRAWN F. IANNUZZI	DATE 11/21/74

THE TECHNICAL MATERIEL CORP.
 MAMARONECK, NEW YORK

PLT. MTG. LEDEX

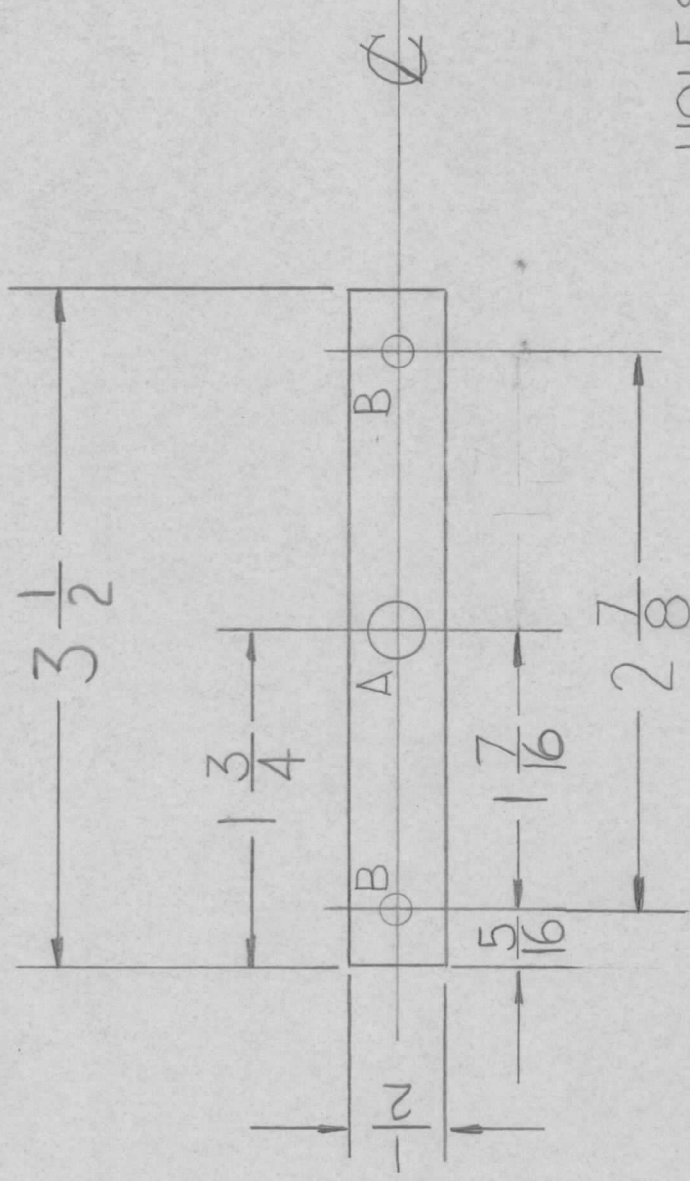
NOTICE TO PERSONS RECEIVING THIS DRAWING
 THE TECHNICAL MATERIEL CORPORATION claims proprietary right in the material disclosed hereon. This drawing is issued in confidence for engineering information only and may not be reproduced or used to manufacture anything shown hereon without permission from THE TECHNICAL MATERIEL CORPORATION to the user. This drawing is loaned for mutual assistance and is subject to recall at any time.

SIZE A	CODE IDENT. NO. 82679	DWG NO. MS6588	ISSUE Ø
SCALE 1:1	SHEET	OF	

APPLICATION

REVISIONS

QTY	MODEL USED ON	ASS'Y NO.	LTR	DESCRIPTION	DATE	E.M.N.NO	DRAFT	CHKD	APPD
2	TMA-1K	A5614	Ø	ORIG RELEASE FOR PROD	3/3/75		α		



HOLES

A - 5/16 DIA. (1 REQ)

B - 13/64 DIA. (2 REQ)

REQ'D ITEM	PART NUMBER	DESCRIPTION	SYM.
LIST OF MATERIAL			
THE TECHNICAL MATERIEL CORP. MAMARONECK, NEW YORK MOUNTING BEARING			
FINAL APPROVAL	DATE		
<i>F. JANNUZZI</i>	8/3/75		
MECH. DES.	DATE		
F. JANNUZZI	2-7-75		
ELECT. DES.	DATE		
CHECKED	DATE		
F. JANNUZZI	12/14/74		
DRAWN	DATE		
F. JANNUZZI	11/27/74		

SIZE	CODE IDENT. NO.	DWG NO.	ISSUE
A	82679	MS6589	Ø
SCALE	1:1	SHEET	OF

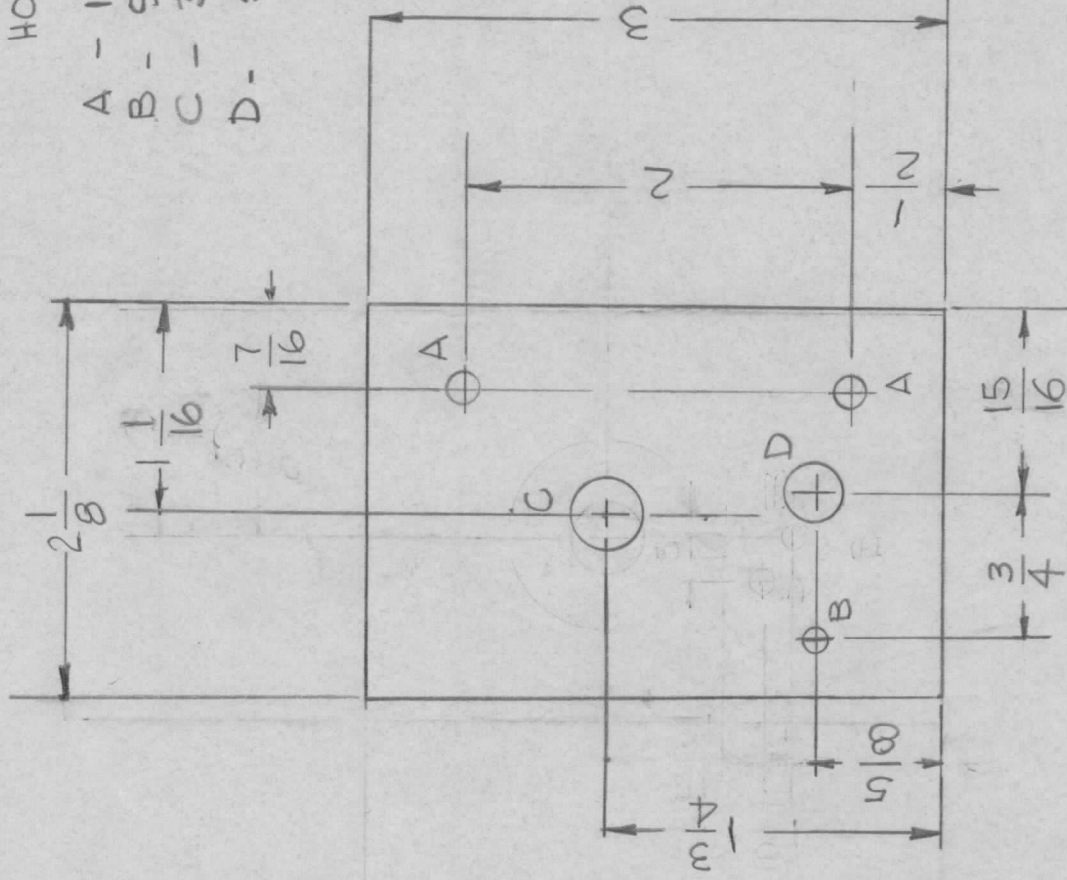
NOTICE TO PERSONS RECEIVING THIS DRAWING
 THE TECHNICAL MATERIEL CORPORATION claims proprietary right in the material disclosed hereon. This drawing is issued in confidence for engineering information only and may not be reproduced or used to manufacture anything shown hereon without permission from THE TECHNICAL MATERIEL CORPORATION to the user. This drawing is loaned for mutual assistance and is subject to recall at any time.

APPLICATION

REVISIONS

QTY	MODEL USED ON	ASS'Y NO.	LTR	DESCRIPTION	DATE	E.M.N.NO	DRAFT	CHKD	APPD
1	GPR 100		X	EXP. RELEASE					

HOLES
 A - 11/64 DIA 2REQ
 B - 9/64 DIA 1REQ
 C - 3/8 DIA 1REQ.
 D - 5/16 DIA 1REQ.



UNLESS OTHERWISE SPECIFIED
 DIMENSIONS ARE IN INCHES
 AND INCLUDE CHEMICALLY APPLIED
 OR PLATED FINISHES

DECIMALS FRACTIONS
 .X ± .05 1/64
 .XX ± .01
 .XXX ± .005

MATERIAL .081 ALUM
 5052-H32

FINISH 5404
 YEL. 12IDITE

REQ'D ITEM PART NUMBER

DESCRIPTION

SYM.

LIST OF MATERIAL

FINAL APPROVAL DATE
 MECH. DES. DATE
 ELECT. DES. DATE
 CHECKED DATE
 DRAWN G. DE LUCA DATE

THE TECHNICAL MATERIEL CORP.
 MAMARONECK, NEW YORK

PLATE MTG ROT

NOTICE TO PERSONS RECEIVING THIS DRAWING

THE TECHNICAL MATERIEL CORPORATION claims proprietary right in the material disclosed hereon. This drawing is issued in confidence for engineering information only and may not be reproduced or used to manufacture anything shown hereon without permission from THE TECHNICAL MATERIEL CORPORATION to the user. This drawing is loaned for mutual assistance and is subject to recall at any time.

SIZE	CODE IDENT. NO.	DWG NO.	ISSUE
A	82679	MS 6591	X

SCALE 1" = 1" SHEET OF

APPLICATION

QTY 1
 MODEL USED ON TMA-1K
 ASS'Y NO. BMA-521

LTR X
 X
 Ø

DESCRIPTION
 EXP. RELEASE
 DIM 2 15/16 WAS 2 9/16
 DIMS 3/8 WAS 1/2 & 3/4
 WAS 1/2
 ORIG RELEASE FOR PROD

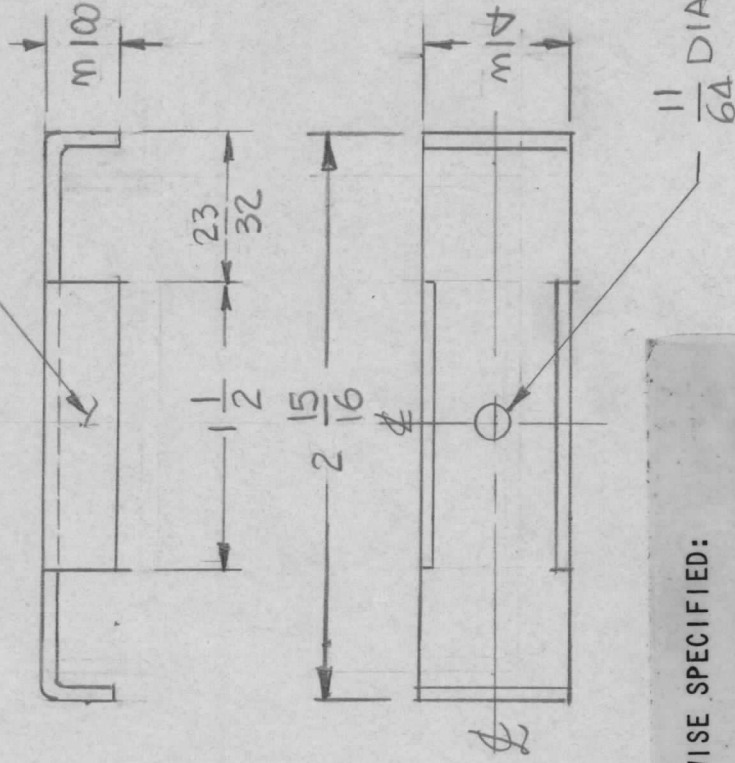
DATE
 1-16-74
 3/13/75

E.M.N.NO
 CL

DRAFT

CHKD
 APPD

MARK TMC PART NUMBER
 1/8 HIGH GOTHIC WITH LATEST
 REVISION LETTER.



UNLESS OTHERWISE SPECIFIED:

1. USE MATERIAL THICKNESS FOR MAXIMUM RADIUS ON ALL BENDS.
2. ALL ANGULAR BENDS 90 DEGREES.
3. REMOVE ALL BURRS AND SHARP EDGES.

UNLESS OTHERWISE SPECIFIED DIMENSIONS ARE IN INCHES AND INCLUDE CHEMICALLY APPLIED OR PLATED FINISHES

DECIMALS
 .X ± .05
 .XX ± .01
 .XXX ± .005

FRACTIONS
 1/64
 TOLS.
 ANGLES
 0° - 30'

MATERIAL .062 THK
 AL ALY 5052-H32

FINISH S404

YEL IRIDITE

REQ'D ITEM PART NUMBER DESCRIPTION SYM.
 FINAL APPROVAL [Signature] DATE 3/13/75
 MECH. DES. F. IANNUZZI DATE 2-7-75
 ELECT. DES. DATE
 CHECKED F. IANNUZZI DATE 2-7-75
 DRAWN G.D.L DATE 12-9-74

LIST OF MATERIAL

THE TECHNICAL MATERIEL CORP.
 MAMARONECK, NEW YORK

BRACKET MTG SWITCH

NOTICE TO PERSONS RECEIVING THIS DRAWING
 THE TECHNICAL MATERIEL CORPORATION claims proprietary right in the material disclosed hereon. This drawing is issued in confidence for engineering information only and may not be reproduced or used to manufacture anything shown hereon without permission from THE TECHNICAL MATERIEL CORPORATION to the user. This drawing is loaned for mutual assistance and is subject to recall at any time.

SIZE A

CODE IDENT. NO. 82679

DWG NO. MS 6592

ISSUE

SCALE

SHEET

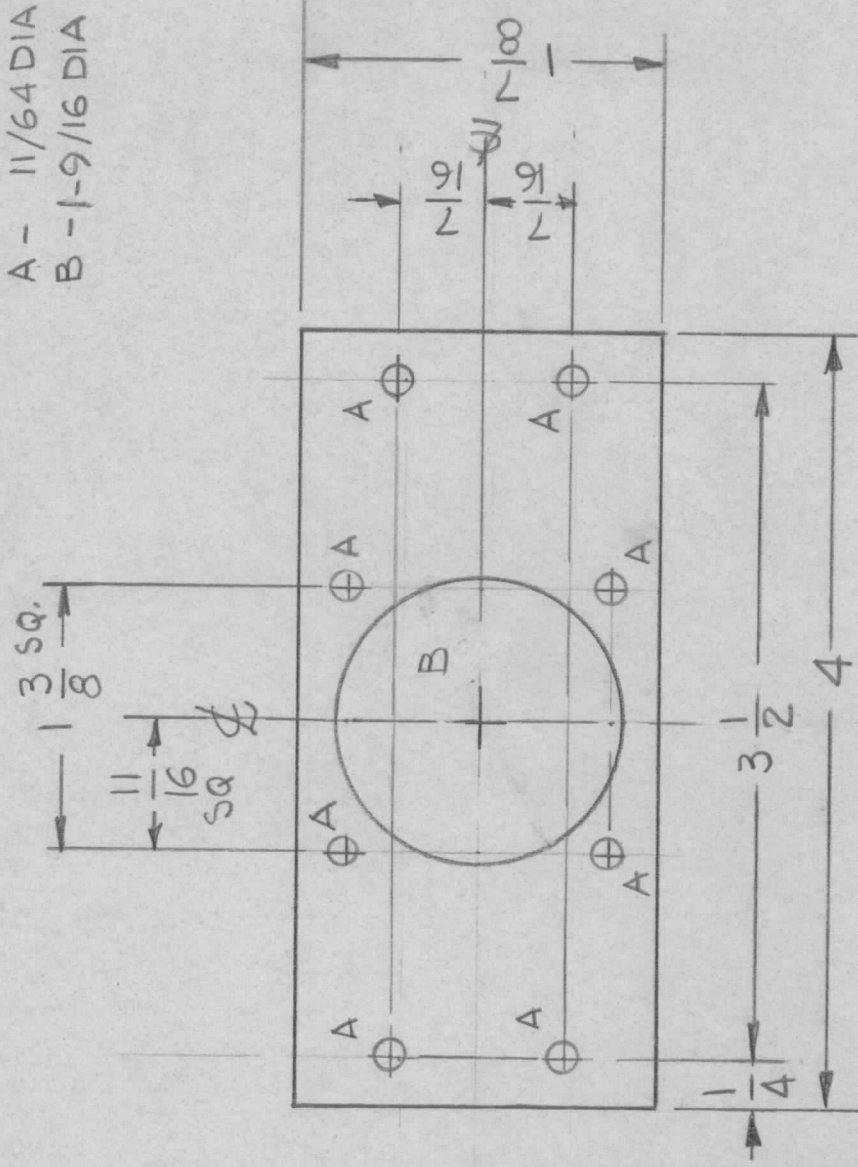
OF

APPLICATION

REVISIONS

QTY	MODEL USED ON	ASS'Y NO.	LTR	DESCRIPTION	DATE	E.M.N.NO	DRAFT	CHKD	APPD
1	SME-5		X1	EXP. RELEASE	1-8-74				
			Ø	ORIGINAL RELEASE FOR PROD	8/76		CL	JAB	*

HOLES
 A - 11/64 DIA ØREQ
 B - 1-9/16 DIA 1REQ



UNLESS OTHERWISE SPECIFIED DIMENSIONS ARE IN INCHES AND INCLUDE CHEMICALLY APPLIED OR PLATED FINISHES

DECIMALS FRACTIONS
 X ± .05 1/64
 .XX ± .01
 .XXX ± .005

MATERIAL .064 THK
 ALUM 5052-H32

FINISH 5404

YEL IRIDITE

REQ'D	ITEM	PART NUMBER	DESCRIPTION	SYM.
LIST OF MATERIAL				
THE TECHNICAL MATERIEL CORP. MAMARONECK, NEW YORK				
PLATE MTC CONNECTOR				

FINAL APPROVAL	DATE
<i>[Signature]</i>	8-12-76
MECH. DES.	DATE
ELECT. DES.	DATE
CHECKED	DATE
DRAWN	DATE
G.D.L	1-8-74

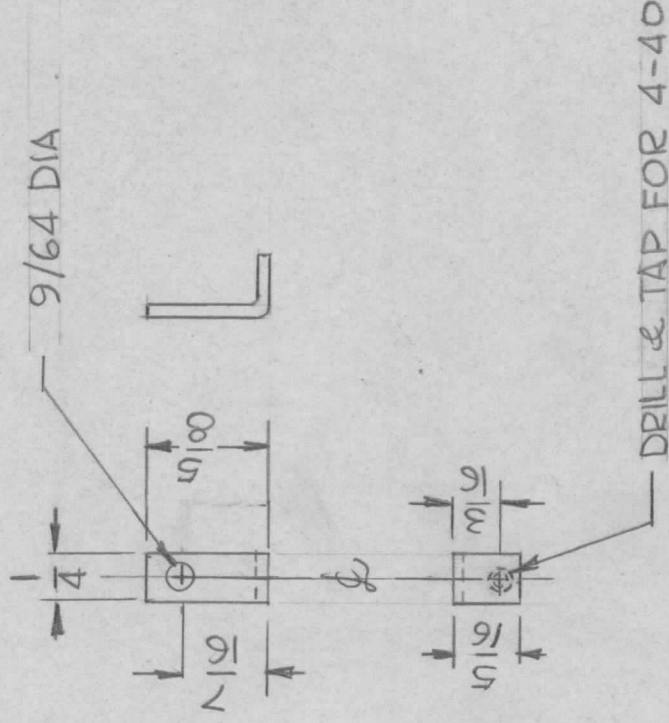
NOTICE TO PERSONS RECEIVING THIS DRAWING
 THE TECHNICAL MATERIEL CORPORATION claims proprietary right in the material disclosed hereon. This drawing is issued in confidence for engineering information only and may not be reproduced or used to manufacture anything shown hereon without permission from THE TECHNICAL MATERIEL CORPORATION to the user. This drawing is loaned for mutual assistance and is subject to recall at any time.

SIZE	CODE IDENT. NO.	DWG NO.	ISSUE
A	82679	MS 6595	Ø
SCALE	1 : 1	SHEET	OF

REVISIONS

APPLICATION

QTY	MODEL USED ON	ASS'Y NO.	LTR	DESCRIPTION	DATE	E.M.N.NO	DRAFT	CHKD	APPD
1	SME-5		X	EXP RELEASE ORIGINAL RELEASE FOR PRODUCTION	1-13-78				



UNLESS OTHERWISE SPECIFIED:

1. USE MATERIAL THICKNESS FOR MAXIMUM RADIUS ON ALL BENDS.
2. ALL ANGULAR BENDS 90 DEGREES.
3. REMOVE ALL BURRS AND SHARP EDGES.

UNLESS OTHERWISE SPECIFIED DIMENSIONS ARE IN INCHES AND INCLUDE CHEMICALLY APPLIED OR PLATED FINISHES	REQ'D	ITEM	PART NUMBER	DESCRIPTION	SYM.	
DECIMALS .X ± .05 .XX ± .01 .XXX ± .005				LIST OF MATERIAL		
FRACTIONS 1/64 ANGLES 0°-30'					THE TECHNICAL MATERIEL CORP. MAMARONECK, NEW YORK	
MATERIAL 064 THK ALUM. 5052-H32	FINAL APPROVAL			BRACKET MTG. CONN.		
FINISH 5404	MECH. DES.				SIZE A	CODE IDENT. NO. MS 6596
YEL IRIDITE	ELECT. DES.				SCALE 1:1	DWG NO. OF
	CHECKED					
	DRAWN G.D.L					
NOTICE TO PERSONS RECEIVING THIS DRAWING THE TECHNICAL MATERIEL CORPORATION claims proprietary right in the material disclosed hereon. This drawing is issued in confidence for engineering information only and may not be reproduced or used to manufacture anything shown hereon without permission from THE TECHNICAL MATERIEL CORPORATION to the user. This drawing is loaned for mutual assistance and is subject to recall at any time.	DATE 1/15/78				ISSUE	

