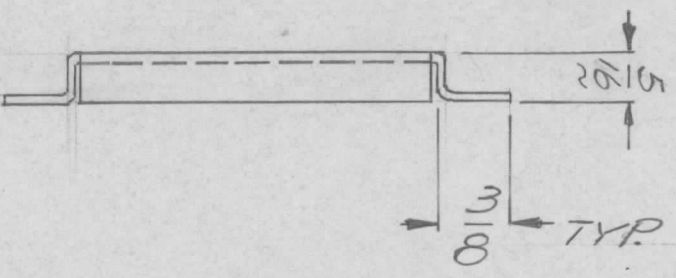
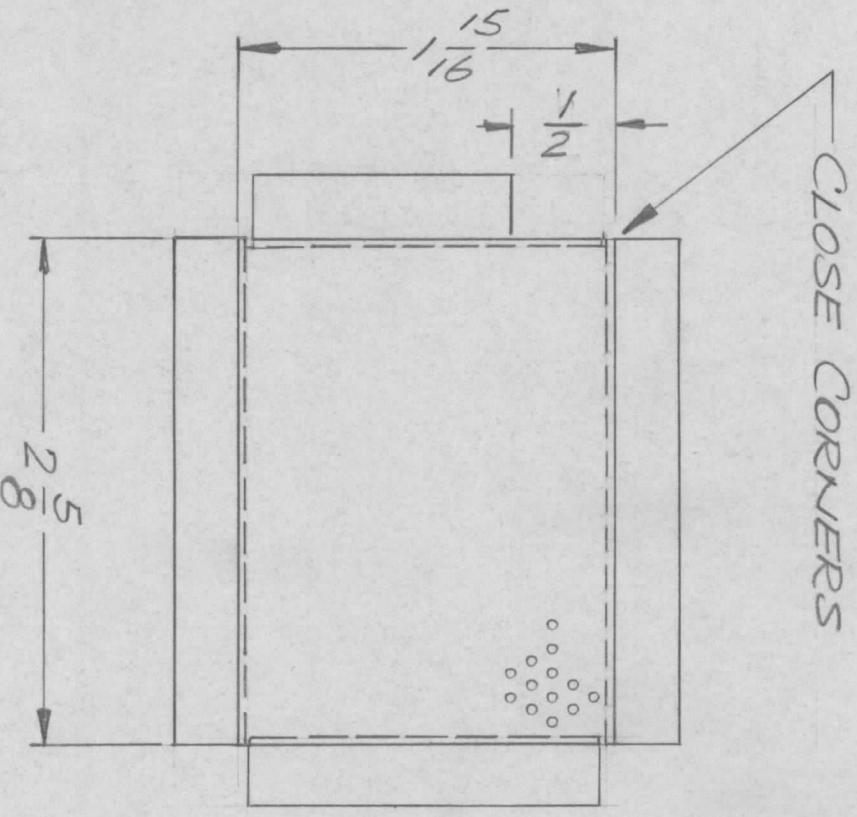


REVISIONS							
EM.N. NO.	DRAFT	CHKD	ZONE	LTR	DESCRIPTION	DATE	APPROVED
	G.D.L.			A	NOTCH 1/2 ADD	7-15-76	
	G.D.L.			A	ORIGINAL RELEASE FOR PRODUCTION	1-25-77	*



MATERIAL
 .051 THK ALUM PERFORATED, .072 DIA HOLES
 ON 1/8 CENTERS STAGGERED

- UNLESS OTHERWISE SPECIFIED:
1. USE MATERIAL THICKNESS FOR MAXIMUM RADIUS ON ALL BENDS.
 2. ALL ANGULAR BENDS 90 DEGREES.
 3. REMOVE ALL BURRS AND SHARP EDGES.
 4. MOUNT INSERTS AFTER FINISHING.

QTY / UNIT	1	MODEL USED ON	GPR 110	ASS'Y NO.	BMA514
APPLICATION		CODE			

NOTICE TO PERSONS RECEIVING THIS DRAWING
 THE TECHNICAL MATERIEL CORPORATION claims proprietary right in the material disclosed hereon. This drawing is issued in confidence for engineering information only and may not be reproduced or used to manufacture anything shown hereon without permission from THE TECHNICAL MATERIEL CORPORATION to the user. This drawing is loaned for mutual assistance and is subject to recall at any time.

UNLESS OTHERWISE SPECIFIED DIMENSIONS ARE IN INCHES AND INCLUDE CHEMICALLY APPLIED OR PLATED FINISHES	DECIMALS	FRACTIONS
.X ± .05	1/64	
.XX ± .01		ANGLES
.XXX ± .005		0° - 30°

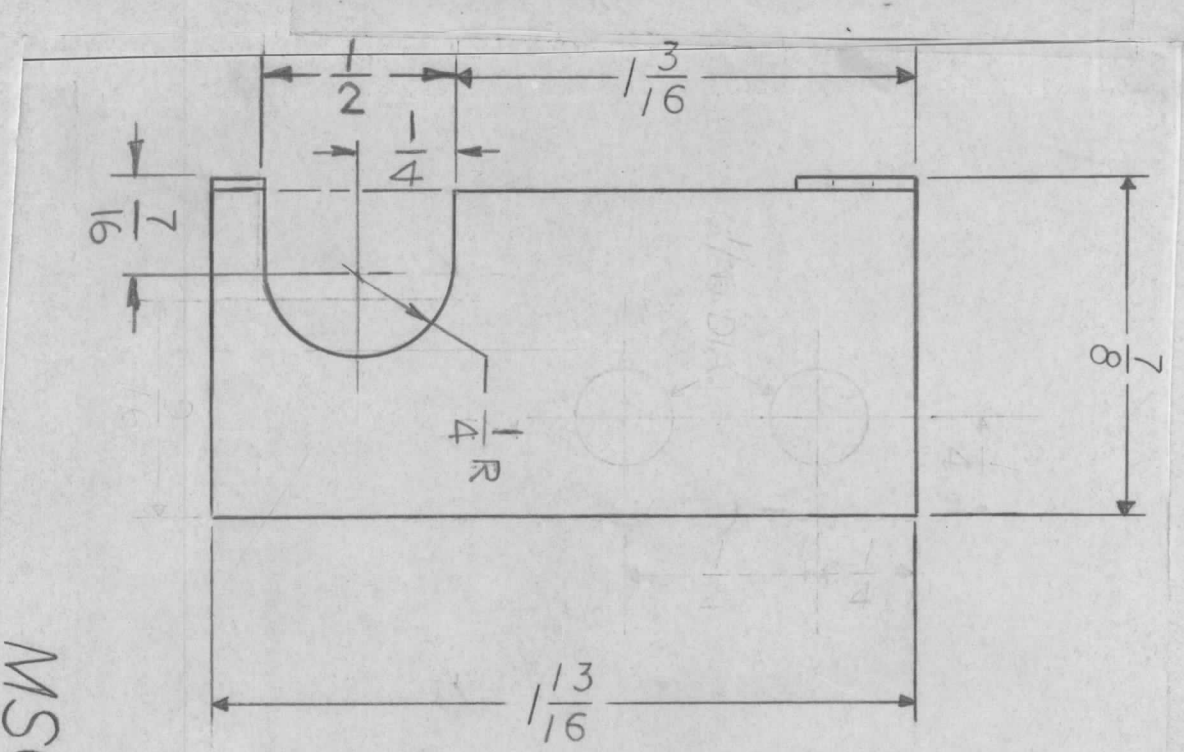
AS NOTED
 FINISH
 BLACK MAT

REQ'D ITEM	PART NUMBER	DESCRIPTION	SYM.
LIST OF MATERIAL			
THE TECHNICAL MATERIEL CORP.			
MAMARONECK, NEW YORK			

FINAL APPROVAL	DATE
F. BUDETTI	7/15/77
MECH. DES.	DATE
ELECT. DES.	DATE
CHECKED	DATE
DRAWN	DATE
QC	

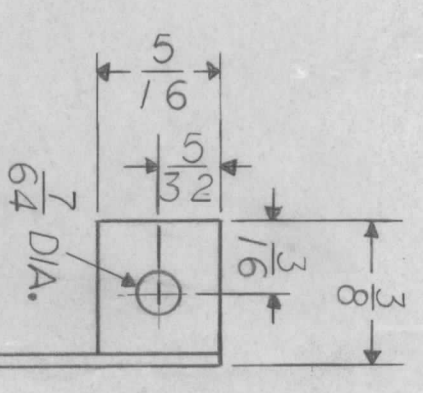
SIZE	CODE IDENT. NO.	DWG NO.	ISSUE
B	82679	MS6504	A
SCALE	1:1	SHEET	OF

NO LONGER REQ'D

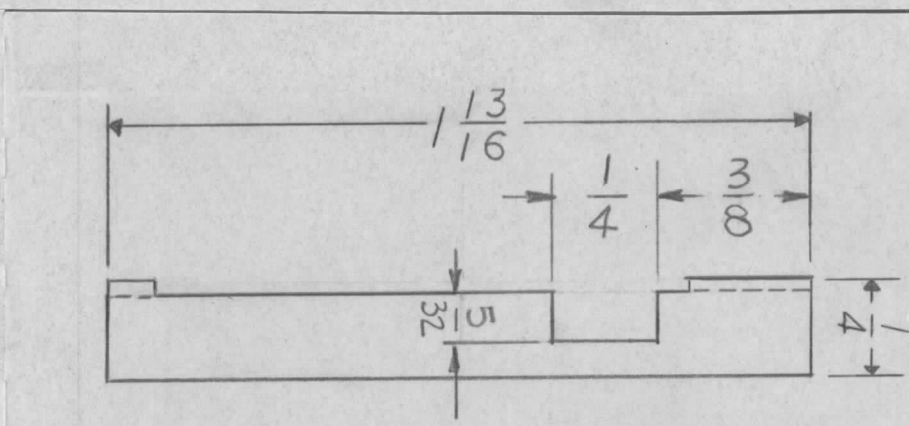


MS6510-1

(SCALE 2:1)



(SCALE 2:1)



MS6510-2

NO LONGER REQ'D

REVISIONS				DATE	APPROVED
EM.N. NO.	DRAFT	CHKD	ZONE	LTR	DESCRIPTION
					ORIGINAL RELEASE
	GDL				TWO 1/4 DIA HOLES DEL. 1 CUT OUT ON ADD. 2 CUT BUT TO ORIGINAL RELEASE
					CUT OUT ON MODIFIED
					-2
					1-7-75
					1-10-77

QTY / UNIT	3 ea.	MODEL USED ON	BMA516	ASS'Y NO.	A4973
APPLICATION					
CODE					

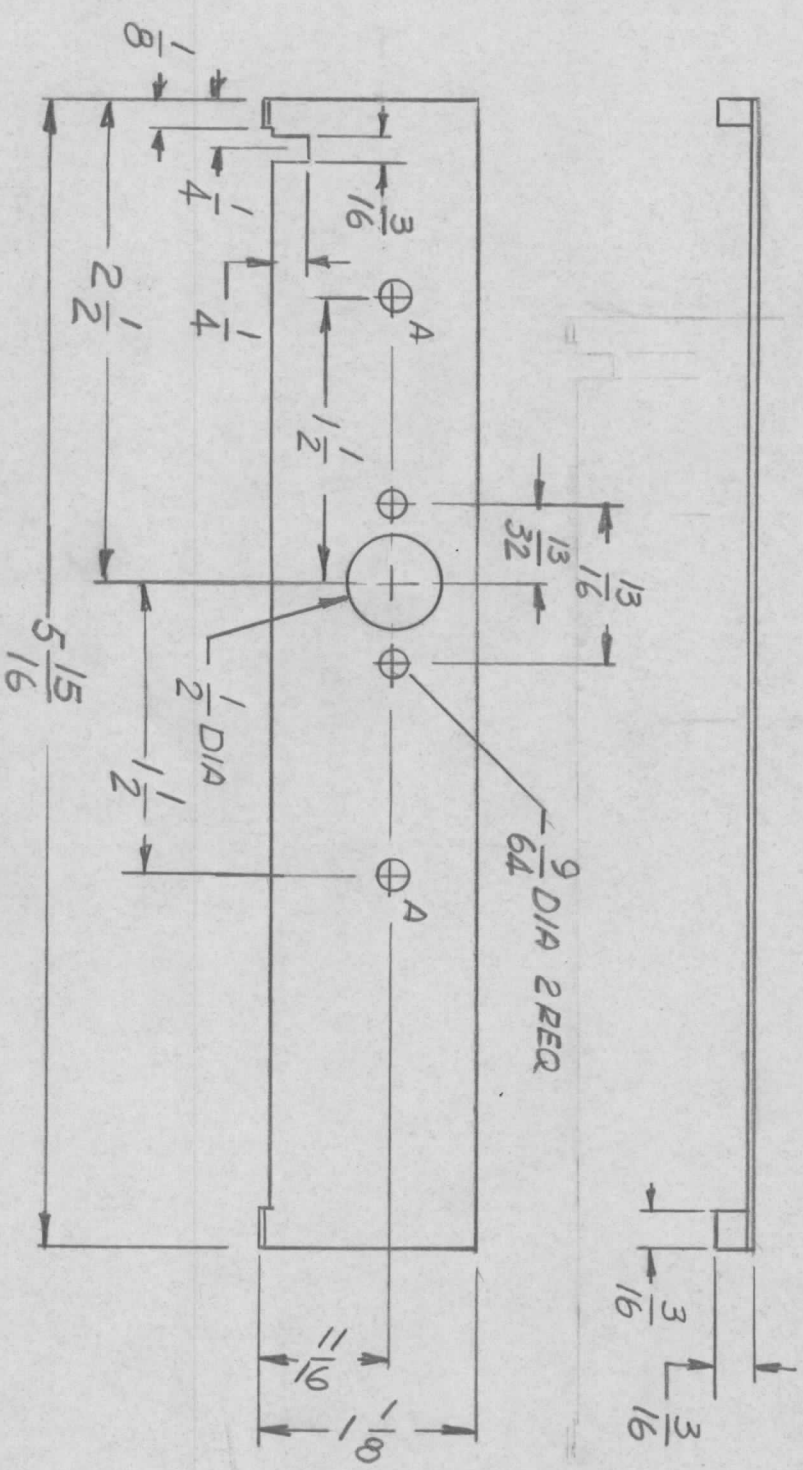
NOTICE TO PERSONS RECEIVING THIS DRAWING
 THE TECHNICAL MATERIEL CORPORATION claims proprietary right in the material disclosed hereon. This drawing is issued in confidence for engineering information only and may not be reproduced or used to manufacture anything shown hereon without permission from THE TECHNICAL MATERIEL CORPORATION to the user. This drawing is loaned for mutual assistance and is subject to recall at any time.

DECIMALS	.X ± .05	FRACTIONS	1/64
	.XX ± .01	TOLS.	ANGLES
	.XXX ± .005		0° - 30°
UNLESS OTHERWISE SPECIFIED DIMENSIONS ARE IN INCHES AND INCLUDE CHEMICALLY APPLIED OR PLATED FINISHES			
FINISH	1/32 Copper		

REQ'D ITEM	PART NUMBER	DESCRIPTION	SYM.
		LIST OF MATERIAL	
		THE TECHNICAL MATERIEL CORP.	
		MAMARONECK, NEW YORK	
		SHIELD, HF, IF	
		TOP & BOTTOM	

SIZE	CODE IDENT. NO.	DWG NO.	ISSUE
B	82679	MS6510	
SCALE	SHEET		OF

REVISIONS				DATE	APPROVED
EM.N. NO.	DRAFT	CHKD	ZONE	LTR	DESCRIPTION
	GDL		B		REDRAWN MS 6511-1, -2 & -3 DELETED
	GDL		B		ORIGINAL RELEASE FOR PRODUCTION
					1-25-77



HOLE
A - 5/32 DIA

QTY / UNIT	MODEL USED ON	ASSY NO.
	GPR-110	A4977
APPLICATION		
CODE		

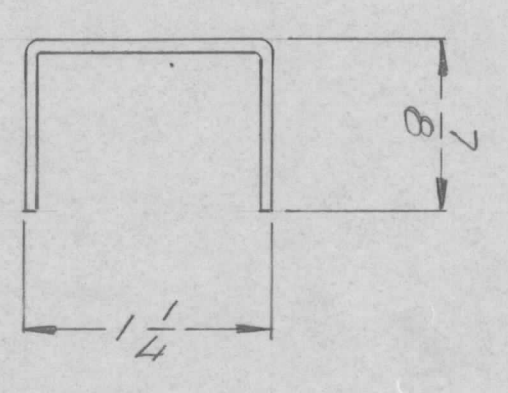
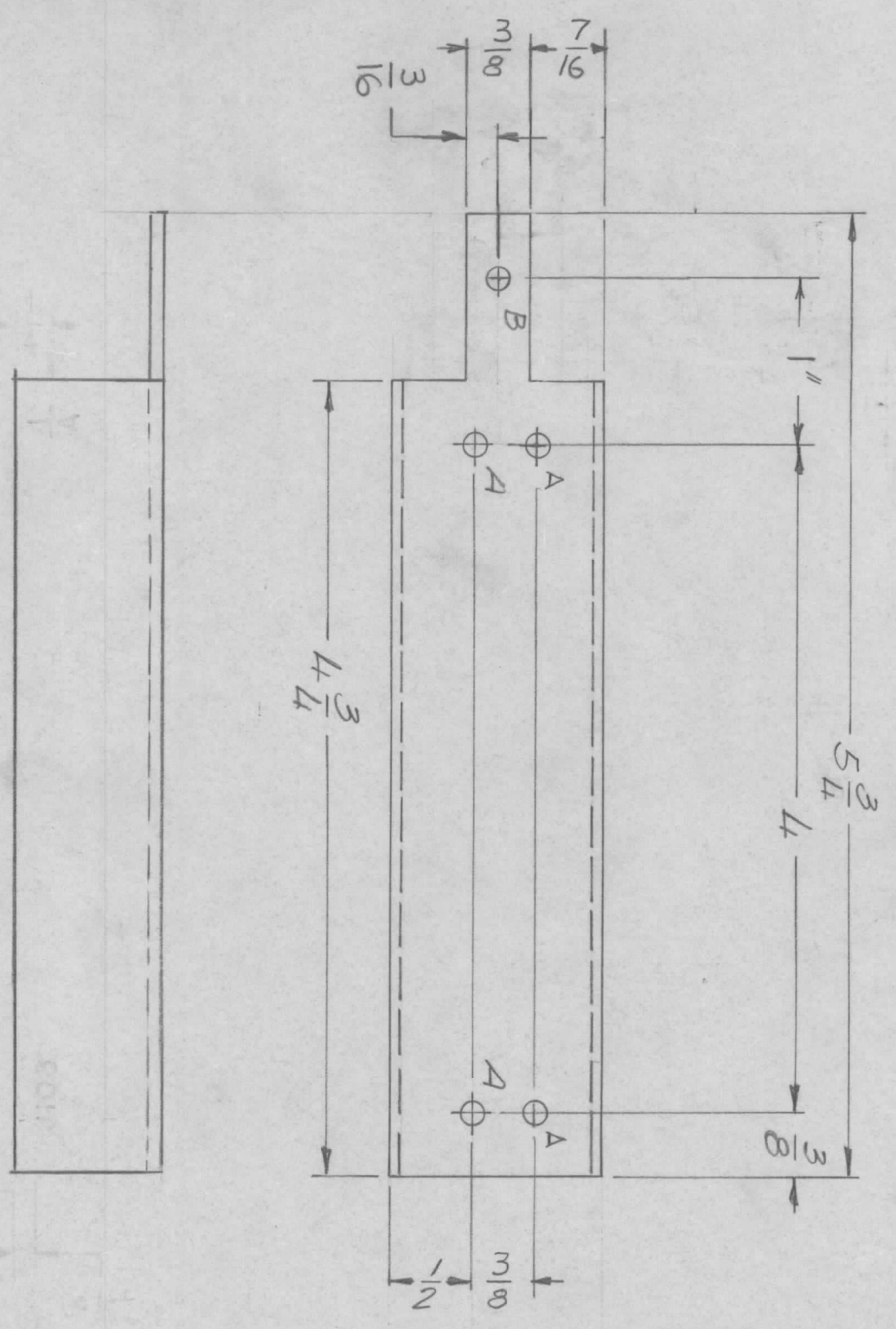
NOTICE TO PERSONS RECEIVING THIS DRAWING
THE TECHNICAL MATERIEL CORPORATION claims proprietary right in the material disclosed hereon. This drawing is issued in confidence for engineering information only and may not be reproduced or used to manufacture anything shown hereon without permission from THE TECHNICAL MATERIEL CORPORATION to the user. This drawing is loaned for mutual assistance and is subject to recall at any time.

UNLESS OTHERWISE SPECIFIED DIMENSIONS ARE IN INCHES AND INCLUDE CHEMICALLY APPLIED OR PLATED FINISHES	
DECIMALS	FRACTIONS
X ± .05	1/64
.XX ± .01	TOLS. ANGLES
.XXX ± .005	90° 30'
MATERIAL .032 THK	
FINISH	
NATURAL	

FINAL APPROVAL	MECH. DES.	DATE
GDL		1/10/77
ELECT. DES.	DATE	
CHECKED	DATE	
DRAWN	DATE	1/10/76

REQ'D ITEM	PART NUMBER	DESCRIPTION	SYM.
LIST OF MATERIAL			
THE TECHNICAL MATERIEL CORP.			
MAMARONECK, NEW YORK			
SHIELD, RF			
SIZE	CODE IDENT. NO.	DWG NO.	ISSUE
B	82679	MS 6511	B
SCALE	1:1	SHEET	OF

REVISIONS							
E.M.N. NO.	DRAFT	CHKD	ZONE	LTR	DESCRIPTION	DATE	APPROVED
				X1	"A" HOLE WAS 9/64 DIA. TWO "A" HOLES "B" HOLES MARKING ADD	11-16-74	
				X2	MARKING NOTE & LETTERING DELETED	8-18-76	
				Ø	ORIGINAL RELEASE FOR PRODUCTION	1-25-77	*



HOLE DESCRIPTION REQ.

A — 11/64 DIA. — 4
 B — 9/64 DIA. — 1

REF: LD 3051

QTY / UNIT	1
MODEL USED ON	GPR 110
ASSY NO.	BMA 515
APPLICATION	
CODE	

UNLESS OTHERWISE SPECIFIED DIMENSIONS ARE IN INCHES AND INCLUDE CHEMICALLY APPLIED OR PLATED FINISHES	FINAL APPROVAL	DATE
MECH. DES.	gds	11/20/74
ELECT. DES.		
CHECKED		
DRAWN	gc	

DECIMALS	FRACTIONS
.X ± .05	1/64
.XX ± .01	TOLS. ANGLES
.XXX ± .005	0° - 30'
MATERIAL	5052 H32
FINISH	SH04
	YEL IRIDITE

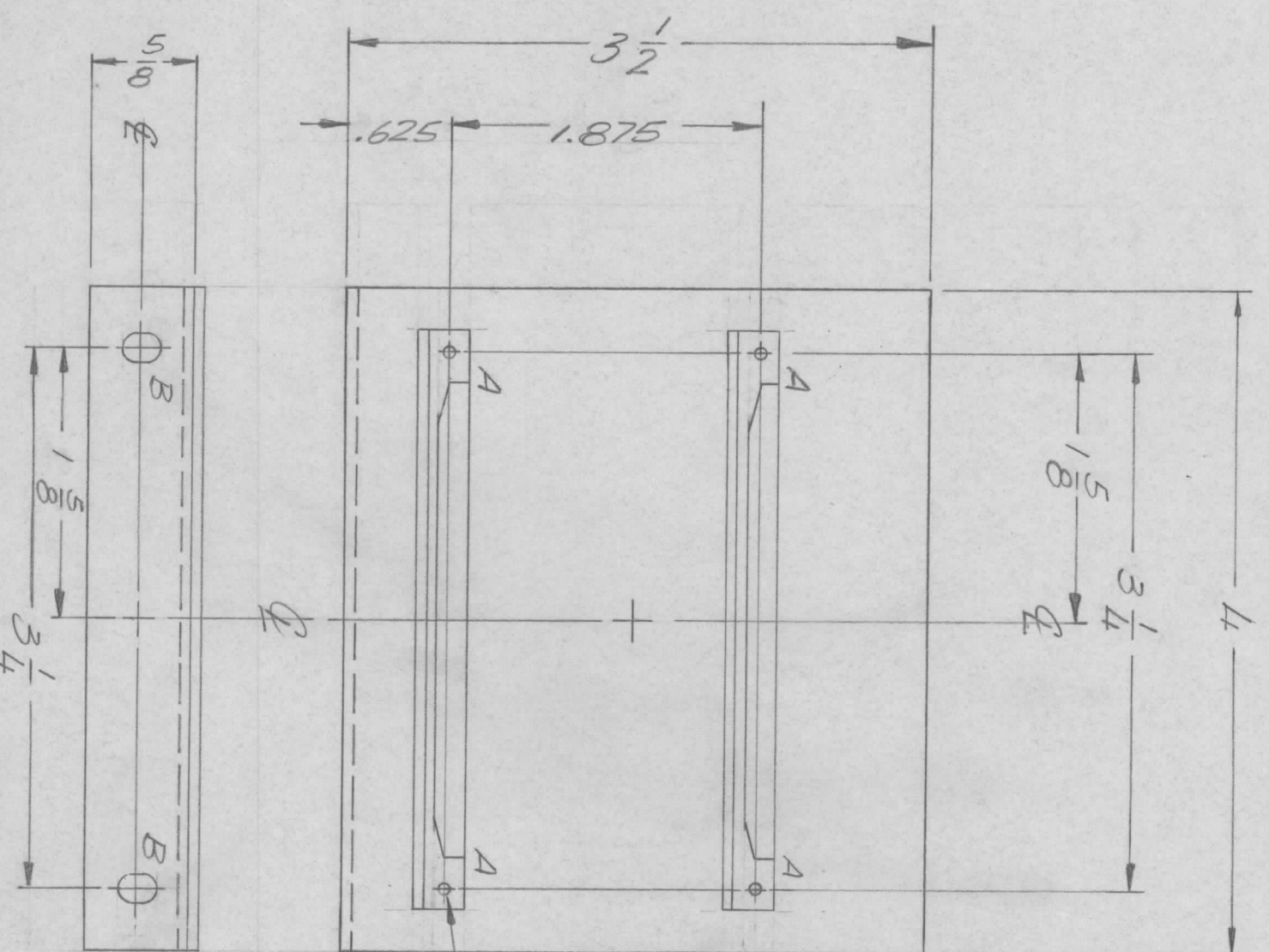
LIST OF MATERIAL

REQ'D	ITEM	PART NUMBER	DESCRIPTION	SYM.
			COVER, CONNECTOR	

NOTICE TO PERSONS RECEIVING THIS DRAWING
 THE TECHNICAL MATERIEL CORPORATION claims proprietary right in the material disclosed hereon. This drawing is issued in confidence for engineering information only and may not be reproduced or used to manufacture anything shown hereon without permission from THE TECHNICAL MATERIEL CORPORATION to the user. This drawing is loaned for mutual assistance and is subject to recall at any time.

SIZE	CODE IDENT. NO.	DWG NO.	ISSUE
B	82679	MS 6514	Ø
SCALE	1:1	SHEET	OF

REVISIONS				DATE	APPROVED
EM.N. NO.	DRAFT	CHKD	ZONE	LTR	DESCRIPTION
	Q.			Ø	ORIGINAL RELEASE FOR PRODUCTION
					6/16/75



HOLE DESCRIPTION REQ.
 A .067 ± .003 DIA - 4
 B — 1/164 x 1/4 SLOT — 2

REQ'D	ITEM	PART NUMBER	DESCRIPTION	SYM.
4	2	EY 100-5	EYELET	A
2	1	CU157-4	RETAINER P.C. BOARD	

LIST OF MATERIAL
 THE TECHNICAL MATERIEL CORP.
 MAMARONECK, NEW YORK

BRKT., GUIDE

- UNLESS OTHERWISE SPECIFIED:
1. USE MATERIAL THICKNESS FOR MAXIMUM RADIUS ON ALL BENDS.
 2. ALL ANGULAR BENDS 90 DEGREES.
 3. REMOVE ALL BURRS AND SHARP EDGES.
 4. MOUNT INSERTS AFTER FINISHING.

QTY / UNIT	2	MODEL USED ON	THRA-2	ASS'Y NO.	
APPLICATION		CODE			

NOTICE TO PERSONS RECEIVING THIS DRAWING
 THE TECHNICAL MATERIEL CORPORATION claims proprietary right in the material disclosed herein. This drawing is issued in confidence for engineering information only and may not be reproduced or used to manufacture anything shown hereon without permission from THE TECHNICAL MATERIEL CORPORATION to the user. This drawing is loaned for mutual assistance and is subject to recall at any time.

UNLESS OTHERWISE SPECIFIED DIMENSIONS ARE IN INCHES AND INCLUDE CHEMICALLY APPLIED OR PLATED FINISHES	DECIMALS	FRACTIONS
.X ± .05	1/64	
.XX ± .01	TOLS.	ANGLES
.XXX ± .005		0° - 30'
MATERIAL	5052 H32	064 ALUM
FINISH	S404	YELLOW IRIDITE

FINAL APPROVAL	DATE
<i>[Signature]</i>	8/27/75
MECH. DES.	DATE
ELECT. DES.	DATE
CHECKED	DATE
DRAWN	DATE
QE	2/8/74

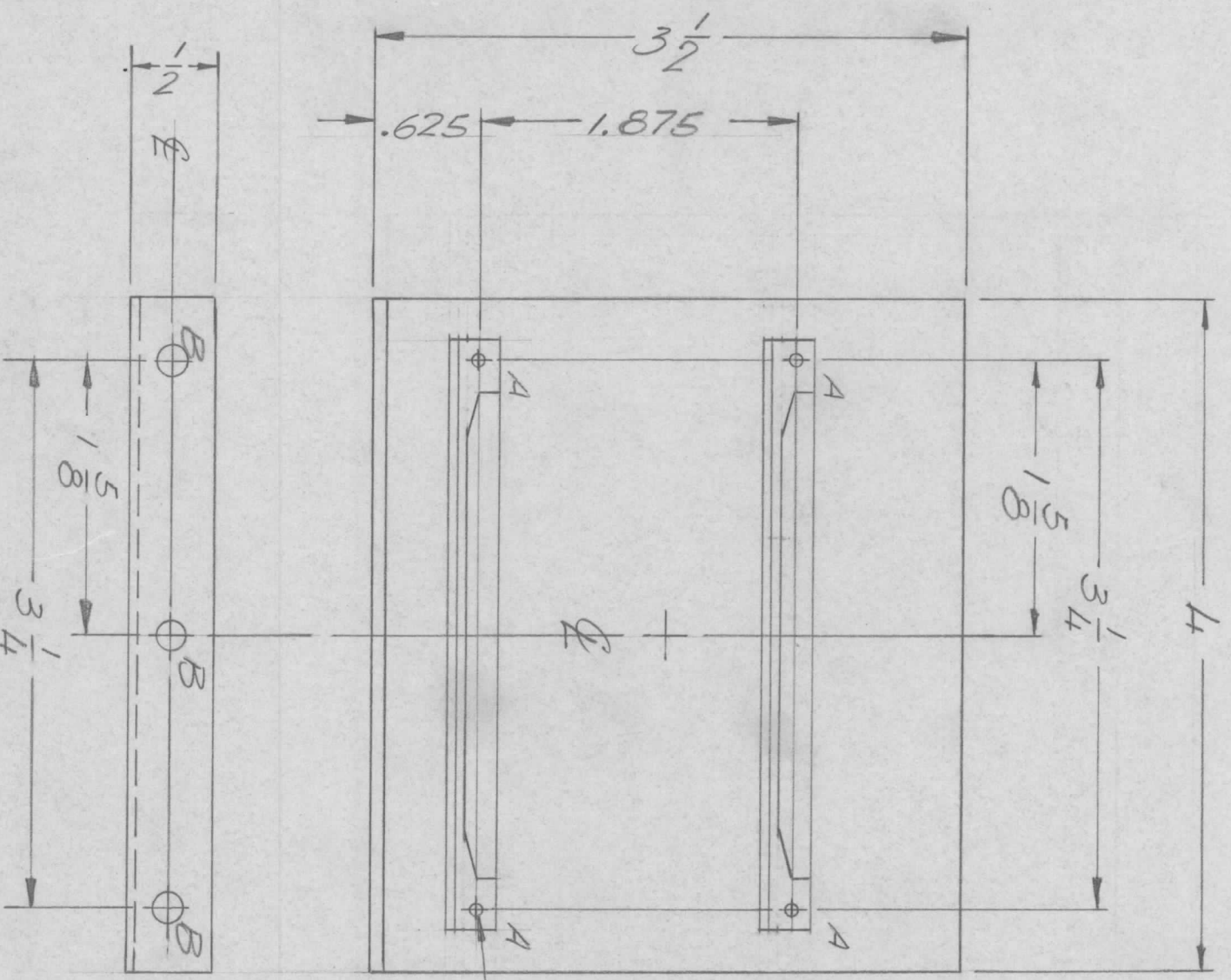
SIZE	CODE IDENT. NO.	DWG NO.	ISSUE
B	82679	MS 6518	Ø
SCALE	1:1	SHEET	OF

REVISIONS				DATE	APPROVED
EMN. NO.	DRAFT	CHKD	ZONE	LTR	DESCRIPTION
	2			Ø	ORIGINAL RELEASE FOR PRODUCTION
					9/16/76

HOLE DESCRIPTION REQ.

A — .067 ± .003 DIA — 4

B — 11/64 DIA. — 3



- UNLESS OTHERWISE SPECIFIED:
1. USE MATERIAL THICKNESS FOR MAXIMUM RADIUS ON ALL BENDS.
 2. ALL ANGULAR BENDS 90 DEGREES.
 3. REMOVE ALL BURRS AND SHARP EDGES.
 4. MOUNT INSERTS AFTER FINISHING.

QTY / UNIT	2	MODEL USED ON	THRA-2	ASSY NO.	
APPLICATION					
CODE					

NOTICE TO PERSONS RECEIVING THIS DRAWING

THE TECHNICAL MATERIEL CORPORATION claims proprietary right in the material disclosed hereon. This drawing is issued in confidence for engineering information only and may not be reproduced or used to manufacture anything shown hereon without permission from THE TECHNICAL MATERIEL CORPORATION to the user. This drawing is loaned for mutual assistance and is subject to recall at any time.

REQ'D	ITEM	PART NUMBER	DESCRIPTION	SYM.
4	2	EY100-5	EYELET	A
2	1	QUI57-4	RETAINER P.C. BOARD	

LIST OF MATERIAL

THE TECHNICAL MATERIEL CORP.

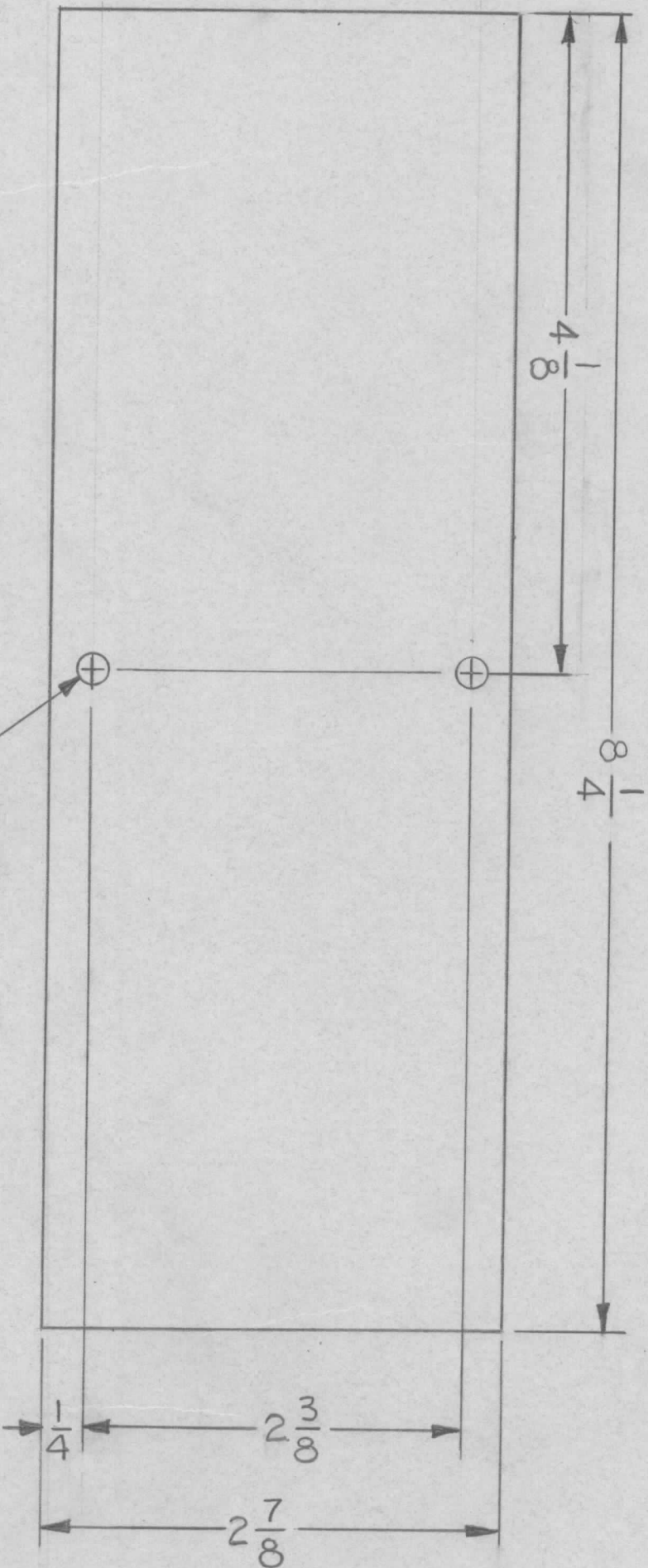
MAMARONECK, NEW YORK

BKRT. GUIDE

DECIMALS	.X ± .05	TOLS.	1/64	FINAL APPROVAL	DATE
	.XX ± .01	ANGLES	0° - 30'	MECH. DES.	DATE
	.XXX ± .005			ELECT. DES.	DATE
MATERIAL. 06L ALUM		CHECKED	DATE	DRAWN	DATE
5052 H32				9E	2/27/76
FINISH SL40L					
VEL IRIDITE					

SIZE	B	CODE IDENT. NO.	82679	DWG NO.	M56519	ISSUE	Ø
SCALE	1:1	SHEET		OF			

REVISIONS				DATE	APPROVED
E.M.N. NO.	DRAFT	CHKD	ZONE	LTR	
	G.D.L.			Ø	ORIGINAL RELEASE FOR PRODUCTION
					1-25-77
					*



.204 DIA HOLE
2 REQ

REQ'D ITEM	PART NUMBER	DESCRIPTION	SYM.
LIST OF MATERIAL			

THE TECHNICAL MATERIEL CORP.
MAMARONECK, NEW YORK

SHIELD, PRINTED CIRCUIT

FINAL APPROVAL	DATE
<i>F. BUDETTI</i>	1/1/77
MECH. DES.	DATE
ELECT. DES.	DATE
CHECKED	DATE
DRAWN	DATE

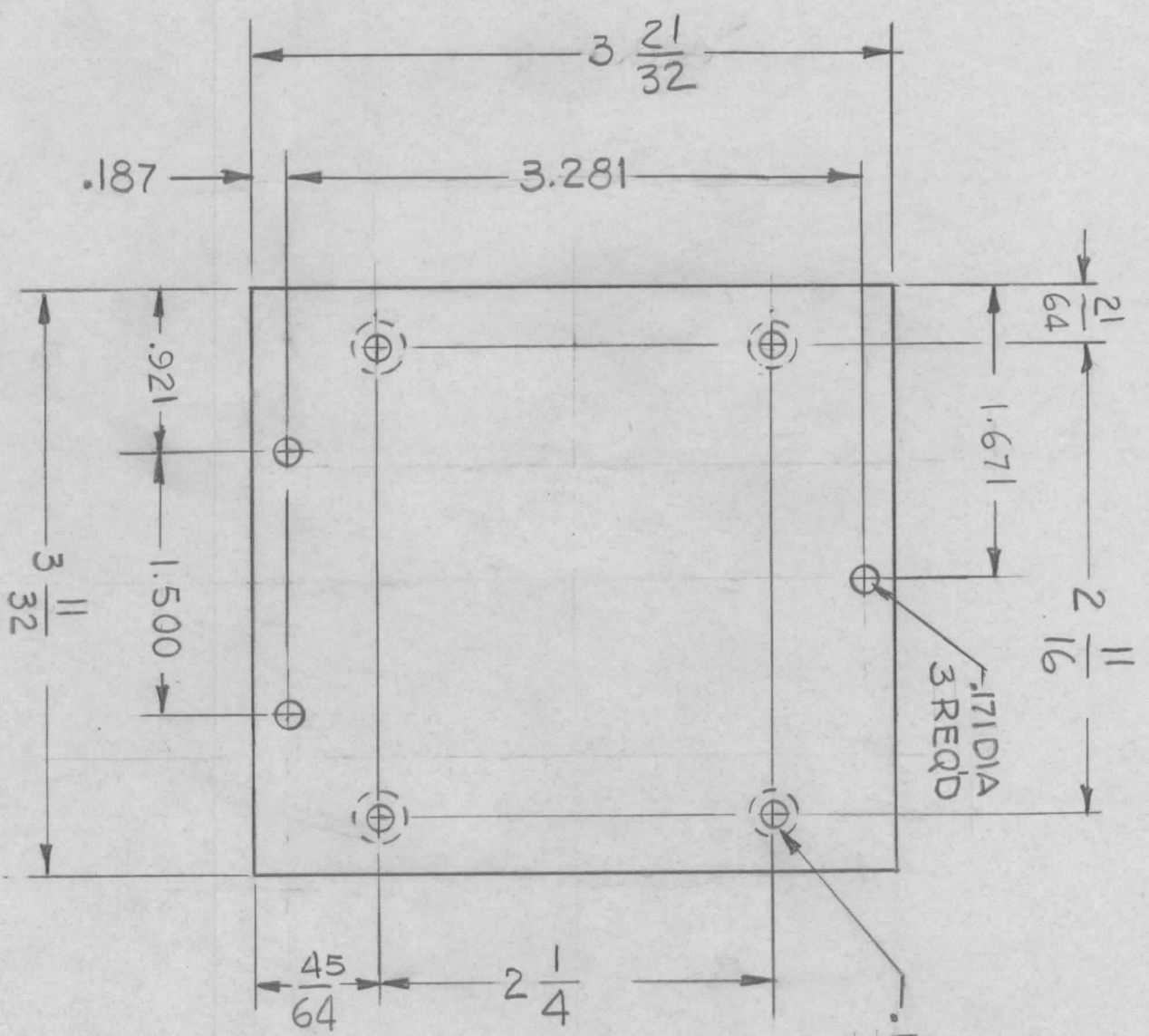
DECIMALS	TOLS.	FRACTIONS	ANGLES
.X ± .05		1/64	
.XX ± .01			° .30'
.XXX ± .005			

QTY / UNIT	MODEL USED ON	ASS'Y. NO.
10	GPR 110	BMA515
APPLICATION		
CODE		

NOTICE TO PERSONS RECEIVING THIS DRAWING

THE TECHNICAL MATERIEL CORPORATION claims proprietary right in the material disclosed hereon. This drawing is issued in confidence for engineering information only and may not be reproduced or used to manufacture anything shown hereon without permission from THE TECHNICAL MATERIEL CORPORATION to the user. This drawing is loaned for mutual assistance and is subject to recall at any time.

REVISIONS				DATE	APPROVED
E.M.N. NO.	DRAFT	CHKD	ZONE	LTR	DESCRIPTION
	G.D.C.			Ø	ORIGINAL RELEASE FOR PRODUCTION
					5-6-74



.144 DIA C'SNK 82° TO .284 DIA ON REAR (4 REQ'D)

NOTE:
USED FOR MTG. TIMER, MADE BY CRAMER # 360CZ - 0-60 SEC.

QTY / UNIT	1	MODEL USED ON	GPT-10K	ASS'Y NO.	AX 103
APPLICATION		CODE			

NOTICE TO PERSONS RECEIVING THIS DRAWING
THE TECHNICAL MATERIEL CORPORATION claims proprietary right in the material disclosed hereon. This drawing is issued in confidence for engineering information only and may not be reproduced or used to manufacture anything shown hereon without permission from THE TECHNICAL MATERIEL CORPORATION to the user. This drawing is loaned for mutual assistance and is subject to recall at any time.

DECIMALS	FRACTIONS
.X ± .05	1/64
.XX ± .01	ANGLES
.XXX ± .005	90° .30'

UNLESS OTHERWISE SPECIFIED DIMENSIONS ARE IN INCHES AND INCLUDE CHEMICALLY APPLIED OR PLATED FINISHES

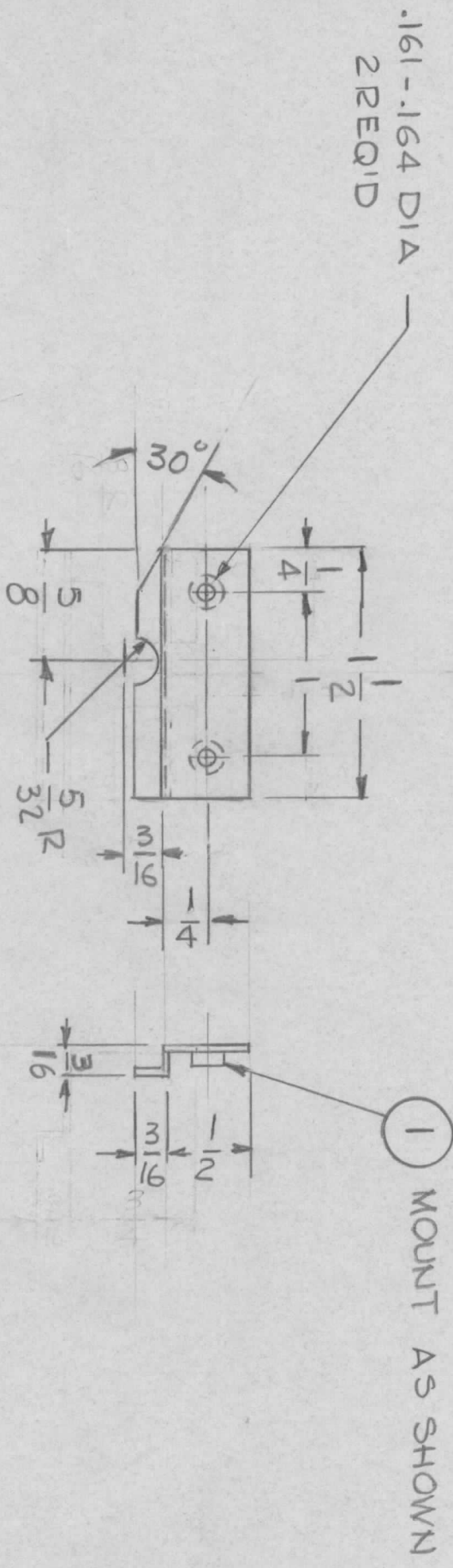
FINISH 5404
ALUM 5052-H32
MATERIAL .063THK
YEL IRIDITE

REQ'D	ITEM	PART NUMBER	DATE

FINAL APPROVAL	MECH. DES.	DATE
ELECT. DES.	DATE	
CHECKED	DATE	
DRAWN	DATE	

LIST OF MATERIAL	DESCRIPTION	SYM.
	THE TECHNICAL MATERIEL CORP. MAMARONECK, NEW YORK	
	PLATE, MTG TIMER KIT	
SIZE	CODE IDENT. NO.	DWG NO.
B	82679	MS6530
SCALE		SHEET
		OF
		ISSUE
		Ø

REVISIONS							
EMIN NO.	DRAFT	CHKD	ZONE	LTR	DESCRIPTION	DATE	APPROVED
	gdL				REDRAWN W/CHANGE	7-3-74	
	gdL				ORIGINAL RELEASE FOR PRODUCTION	1-25-77	*



UNLESS OTHERWISE SPECIFIED:

1. USE MATERIAL THICKNESS FOR MAXIMUM RADIUS ON ALL BENDS.
2. ALL ANGULAR BENDS 90 DEGREES.
3. REMOVE ALL BURRS AND SHARP EDGES.

REQ'D	ITEM	PART NUMBER	DESCRIPTION	SYM.
2	1	NT0440-4	NUT, PLAIN ROUND	

QTY / UNIT	1	MODEL USED ON	BMA516 (SPR110)	ASS'Y NO.	A4977
APPLICATION					
CODE					

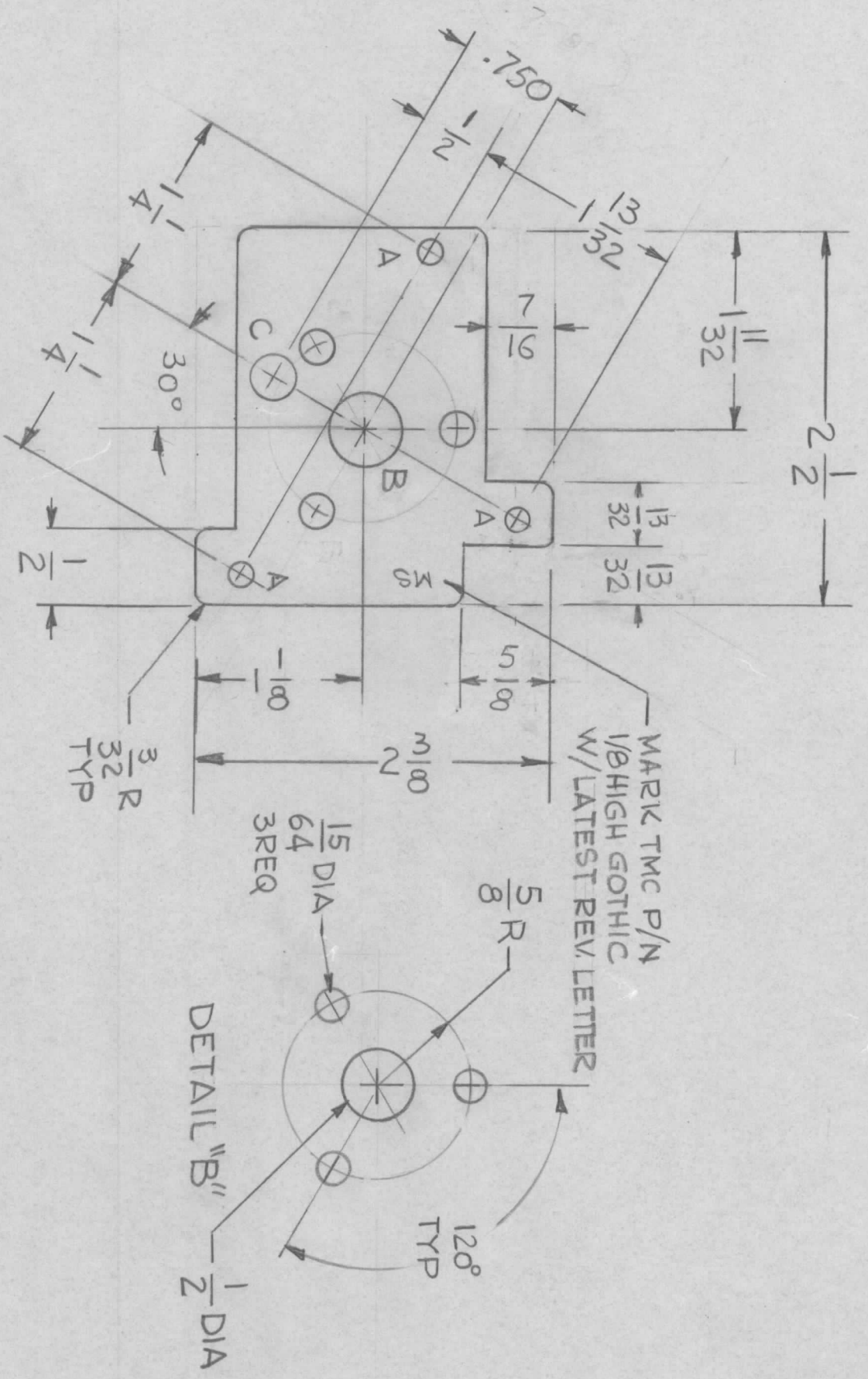
DECIMALS	.X ± .05	TOLS.	1/64
	.XX ± .01	ANGLES	0°-30'
	.XXX ± .005		
MATERIAL			
.040 COPPER			
FINISH			
NATURAL			

FINAL APPROVAL	DATE	MECH. DES.	DATE	ELECT. DES.	DATE	CHECKED	DATE	DRAWN	DATE
	7/8/77								

NOTICE TO PERSONS RECEIVING THIS DRAWING
 THE TECHNICAL MATERIEL CORPORATION claims proprietary right in the material disclosed hereon. This drawing is issued in confidence for engineering information only and may not be reproduced or used to manufacture anything shown hereon without permission from THE TECHNICAL MATERIEL CORPORATION to the user. This drawing is loaned for mutual assistance and is subject to recall at any time.

LIST OF MATERIAL	THE TECHNICAL MATERIEL CORP.	SCALE	1:1
	MAMARONECK, NEW YORK	SIZE	B
	BRACKET, DETENT	CODE IDENT. NO.	82679
		DWG NO.	MS 6541
		SHEET	OF
		ISSUE	Ø

REVISIONS				DATE	APPROVED
EMN NO.	DRAFT	CHKD	ZONE	LTR	DESCRIPTION
				X	EXP. RELEASE
				X2	DIM 5/B WAS 1/4 - 13/32 WAS 5/16 & 13/32 WAS 1/2 .750 WAS .708
				Ø	ORIGINAL RELEASE FOR PRODUCTION
					11-27-74
					3-13-75



HOLES	DESCRIPTION	REQ
A	11/64 DIA	3
B	SEE DETAIL	1
C	5/16 DIA	1

REQ'D ITEM	PART NUMBER	DESCRIPTION	SYM.
		LIST OF MATERIAL	

FINAL APPROVAL	MECH. DES.	ELECT. DES.	DATE
<i>[Signature]</i>	F. IANNUZZI		2-7-75
			5-6-74

1	TMA IK	AX782
QTY / UNIT	MODEL USED ON	ASS'Y NO.
	APPLICATION	
	CODE	

DECIMALS	FRACTIONS
X ± .05	1/64
.XX ± .01	ANGLES
.XXX ± .005	0° - 30'

MATERIAL 1/8 THK	ALUM 5052-H32
FINISH	S404
	YEL IRIDITE

SIZE	CODE IDENT. NO.	DWG NO.	ISSUE
B	82679	MS 6550	Ø
SCALE	1 : 1	SHEET	OF

THE TECHNICAL MATERIEL CORP.
MAMARONECK, NEW YORK

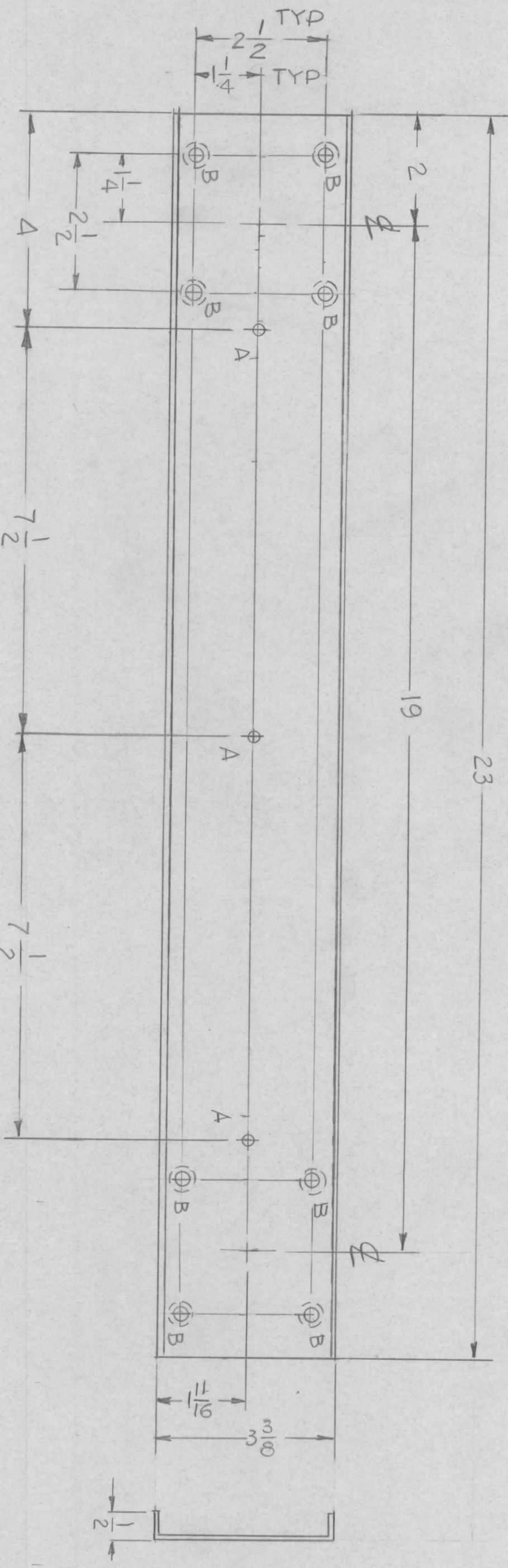
REAR PLATE MTG MOTOR

NOTICE TO PERSONS RECEIVING THIS DRAWING
THE TECHNICAL MATERIEL CORPORATION claims proprietary right in the material disclosed hereon. This drawing is issued in confidence for engineering information only and may not be reproduced or used to manufacture anything shown hereon without permission from THE TECHNICAL MATERIEL CORPORATION to the user. This drawing is loaned for mutual assistance and is subject to recall at any time.

HOLES	DESCRIPTION	REQ'D
A	15/64 DIA	3
B	.196 DIA CSNK 82° TO .390	8

REVISIONS				
EM.N. NO.	DRAFT	CHKD	ZONE	LTR
	DL			

DESCRIPTION	DATE	APPROVED
ORIGINAL RELEASE FOR PRODUCTION	6/16/75	



FINISH:
 APPLY PRIMER AND ONE
 COAT OF TEXTURED BLUE
 GREY VINYL PER TMC SPEC 5520

QTY / UNIT	MODEL USED ON	ASS'Y NO.
1	GPT-1K	

APPLICATION	
CODE	

NOTICE TO PERSONS RECEIVING THIS DRAWING
 THE TECHNICAL MATERIEL CORPORATION claims proprietary right in the material disclosed hereon. This drawing is issued in confidence for engineering information only and may not be reproduced or used to manufacture anything shown hereon without permission from THE TECHNICAL MATERIEL CORPORATION to the user. This drawing is loaned for mutual assistance and is subject to recall at any time.

DECIMALS	FRACTIONS
.X ± .05	1/64
.XX ± .01	ANGLES
.XXX ± .005	0° .30'

UNLESS OTHERWISE SPECIFIED
 DIMENSIONS ARE IN INCHES
 AND INCLUDE CHEMICALLY APPLIED
 OR PLATED FINISHES

FINISH
 SEE NOTE

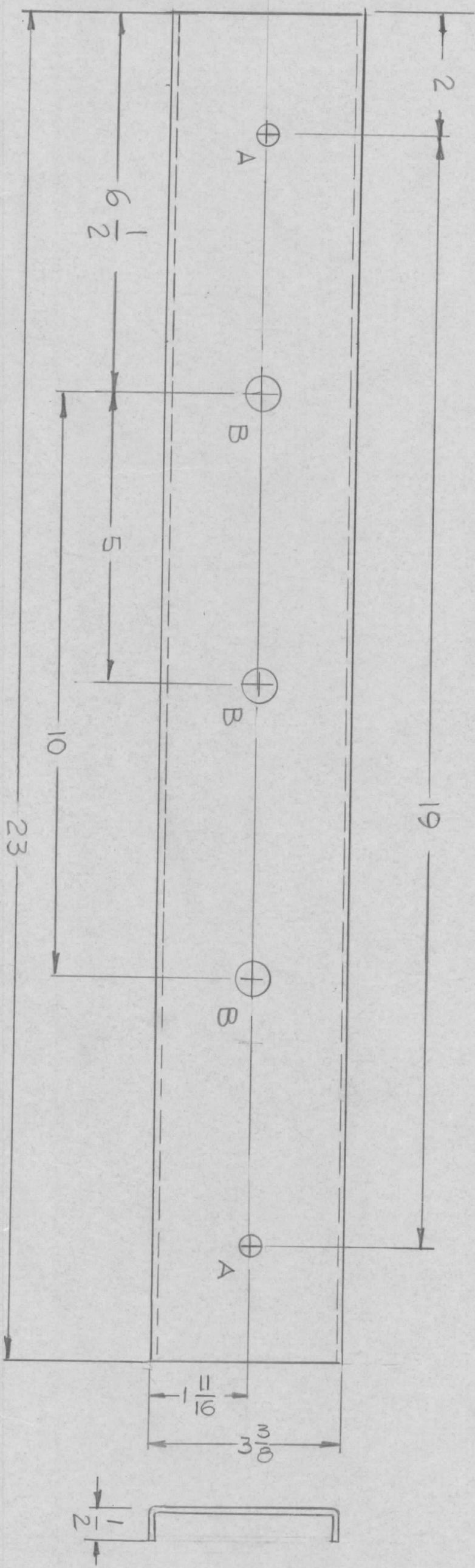
REQ'D ITEM	PART NUMBER	DESCRIPTION	SYM.
		LIST OF MATERIAL	

FINAL APPROVAL		DATE
MECH. DES.	<i>[Signature]</i>	5/21/75
ELECT. DES.		
CHECKED		
DRAWN	<i>G. DeLuna</i>	

THE TECHNICAL MATERIEL CORP.			
MAMARONECK, NEW YORK			
BRACKET MTG SHOCK (REAR)			
SIZE	CODE IDENT. NO.	DWG NO.	ISSUE
B	82679	MS 6557	<i>[Signature]</i>
SCALE	1:2	SHEET	OF

HOLES	DESCRIPTION	REQ'D
A	13/32 DIA	2
B	5/8 DIA	3

REVISIONS				DATE	APPROVED
EMN NO.	DRAFT	CHKD	ZONE	LTR	DESCRIPTION
	CL				ORIGINAL RELEASE FOR PRODUCTION
					6/16/75



FINISH:
 APPLY PRIMER AND ONE
 COAT OF TEXTURED BLUE -
 GREY VINYL PER TMC SPEC-5520

QTY / UNIT	MODEL USED ON	ASSY NO.
1	GPT-1K	
APPLICATION		
CODE		

DECIMALS	FRACTIONS
.X ± .05	1/64
.XX ± .01	ANGLES
.XXX ± .005	0° - 30°

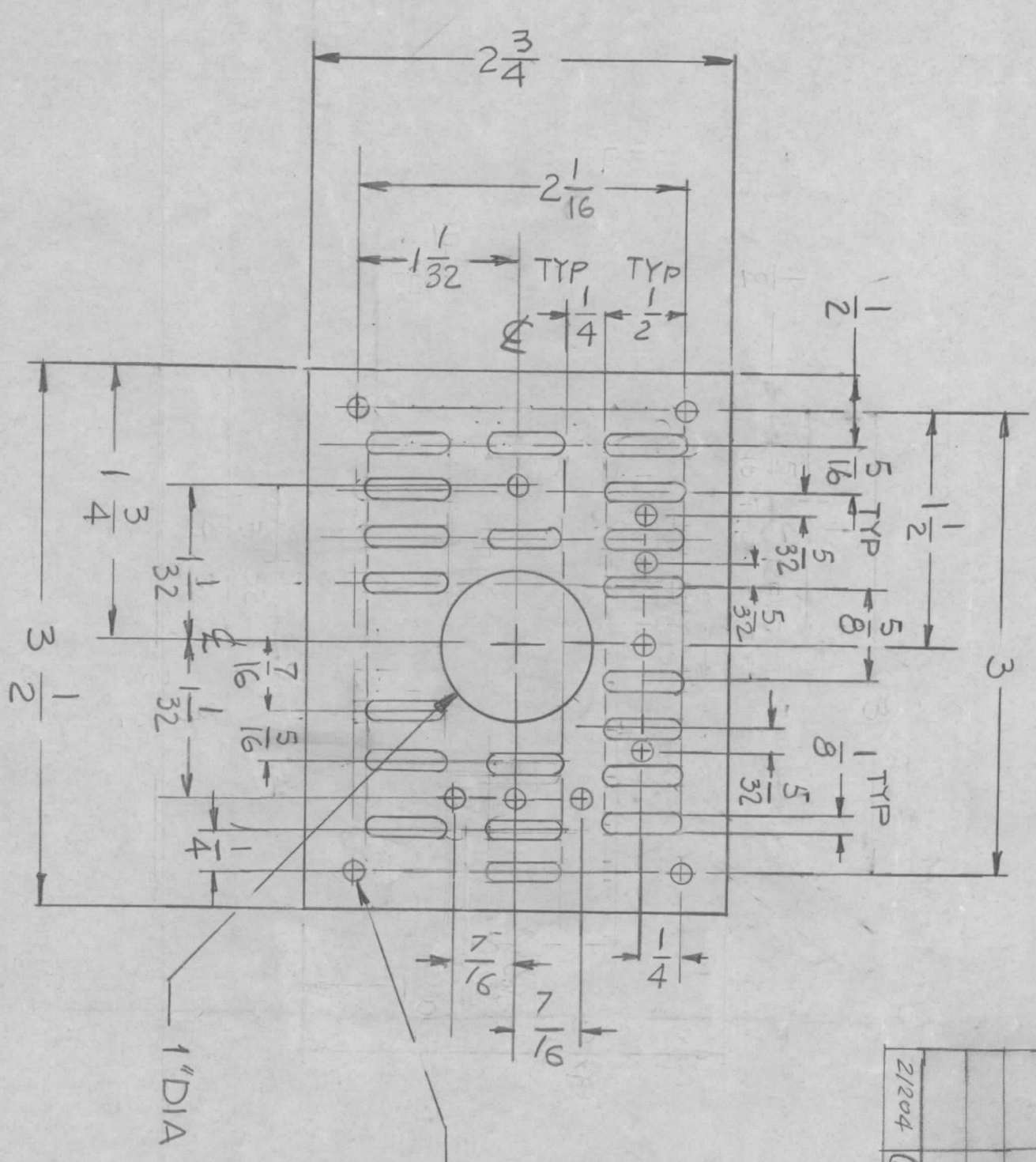
NOTICE TO PERSONS RECEIVING THIS DRAWING
 THE TECHNICAL MATERIEL CORPORATION claims proprietary right in the material disclosed hereon. This drawing is issued in confidence for engineering information only and may not be reproduced or used to manufacture anything shown hereon without permission from THE TECHNICAL MATERIEL CORPORATION to the user. This drawing is loaned for mutual assistance and is subject to recall at any time.

UNLESS OTHERWISE SPECIFIED
 DIMENSIONS ARE IN INCHES
 AND INCLUDE CHEMICALLY APPLIED
 OR PLATED FINISHES

FINAL APPROVAL	MECH. DES.	DATE
<i>[Signature]</i>		5/21/75
ELECT. DES.	DATE	
CHECKED	DATE	
DRAWN	DATE	
G. DELUCIA	5-17-74	

REQ'D	ITEM	PART NUMBER	DESCRIPTION	SYM.
			LIST OF MATERIAL	
			THE TECHNICAL MATERIEL CORP.	
			MAMARONECK, NEW YORK	
			BRACKET MTG SHOCK	
			(REAR)	
			SIZE	
			CODE IDENT. NO.	
			DWG NO.	
			ISSUE	

SCALE 1:2
 SHEET OF



REVISIONS							
EMN. NO.	DRAFT	CHKD	ZONE	LTR	DESCRIPTION	DATE	APPROVED
				X	EXP. RELEASE		
				X1	DIA. HOLES ON PERFORATED AREA ADDED	10-30-74	
				X2	MODIFIED PERFORATED AREA TO SLOTS	11-27-74	
				Ø	ORIGINAL RELEASE	1/2/75	
2/204	D.I.	GDL		A	OK LEFT SIDE 1/32 WAS 1/16 & BOTTOM 1/32 WAS 1/32	1-13-75	

1	HFL-100	ASS'Y NO.
MODEL USED ON		
APPLICATION		
CODE		

DECIMALS	FRACTIONS
X ± .05	1/64
.XX ± .01	ANGLES
.XXX ± .005	0° - 30°

UNLESS OTHERWISE SPECIFIED DIMENSIONS ARE IN INCHES AND INCLUDE CHEMICALLY APPLIED OR PLATED FINISHES	FINAL APPROVAL	DATE
	<i>[Signature]</i>	12/31/74
	MECH. DES.	DATE
	<i>[Signature]</i>	12-31-74
	ELECT. DES.	DATE
	CHECKED	DATE
	<i>[Signature]</i>	
	DRAWN	DATE
	<i>[Signature]</i>	4/7/74

LIST OF MATERIAL			
REQ'D	ITEM	PART NUMBER	DESCRIPTION
			THE TECHNICAL MATERIEL CORP.
			MAMARONECK, NEW YORK
PLATE MTG TUBE			

NOTICE TO PERSONS RECEIVING THIS DRAWING			
THE TECHNICAL MATERIEL CORPORATION claims proprietary right in the material disclosed hereon. This drawing is issued in confidence for engineering information only and may not be reproduced or used to manufacture anything shown hereon without permission from THE TECHNICAL MATERIEL CORPORATION to the user. This drawing is loaned for mutual assistance and is subject to recall at any time.			
QTY / UNIT	MODEL USED ON	ASS'Y NO.	
FINISH	ALUM 5052-H32	CODE	
FINISH	YEL IRIDITE	CODE	
SIZE	CODE IDENT. NO.	DWG NO.	ISSUE
B	82679	MS 6567	A
SCALE	1:1	SHEET	OF