

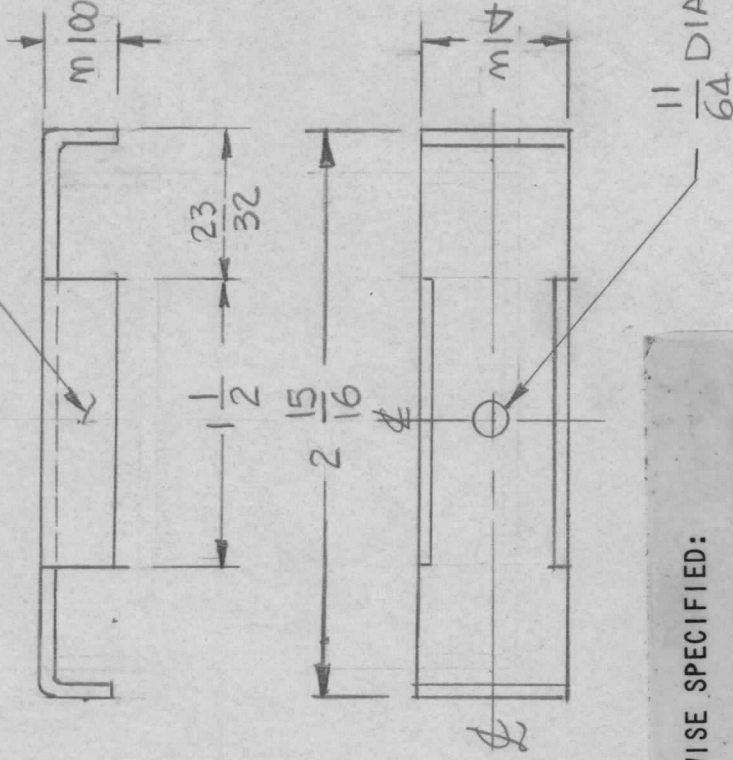
APPLICATION

QTY	MODEL USED ON	ASSY NO.
1	TMA-1K	BMA-521

LTR	DESCRIPTION
X	EXP. RELEASE
X	DIM 2 15/16 WAS 2 9/16
	DIMS 3/8 WAS 1/2 & 3/4 WAS 1/2
Ø	ORIG RELEASE FOR PROD

E.M.N.NO	DATE	REVISIONS
	1-16-74	
	3/13/75	CL

MARK TMC PART NUMBER
1/8 HIGH GOTHIC WITH LATEST
REVISION LETTER.



UNLESS OTHERWISE SPECIFIED:

1. USE MATERIAL THICKNESS FOR MAXIMUM RADIUS ON ALL BENDS.
2. ALL ANGULAR BENDS 90 DEGREES.
3. REMOVE ALL BURRS AND SHARP EDGES.

UNLESS OTHERWISE SPECIFIED DIMENSIONS ARE IN INCHES AND INCLUDE CHEMICALLY APPLIED OR PLATED FINISHES

DECIMALS ± .05 TOLS. 1/64
.XX ± .01 ANGLES 0°-30'
.XXX ± .005

MATERIAL .062 THK
AL ALY 5052-H32

FINISH S404

YEL IRIDITE

REQ'D	ITEM	PART NUMBER	DESCRIPTION
FINAL APPROVAL			LIST OF MATERIAL
MECH. DES.	F. IANNUZZI		THE TECHNICAL MATERIEL CORP. MAMARONECK, NEW YORK
ELECT. DES.			
CHECKED	F. IANNUZZI		
DRAWN	G.D.L		

DATE	3/13/75
DATE	2-7-75
DATE	
DATE	2-7-75
DATE	12-9-74

NOTICE TO PERSONS RECEIVING THIS DRAWING
THE TECHNICAL MATERIEL CORPORATION claims proprietary right in the material disclosed hereon. This drawing is issued in confidence for engineering information only and may not be reproduced or used to manufacture anything shown hereon without permission from THE TECHNICAL MATERIEL CORPORATION to the user. This drawing is loaned for mutual assistance and is subject to recall at any time.

SIZE	CODE IDENT. NO.	DWG NO.	ISSUE
A	82679	MS 6592	Ø
SCALE		SHEET	OF