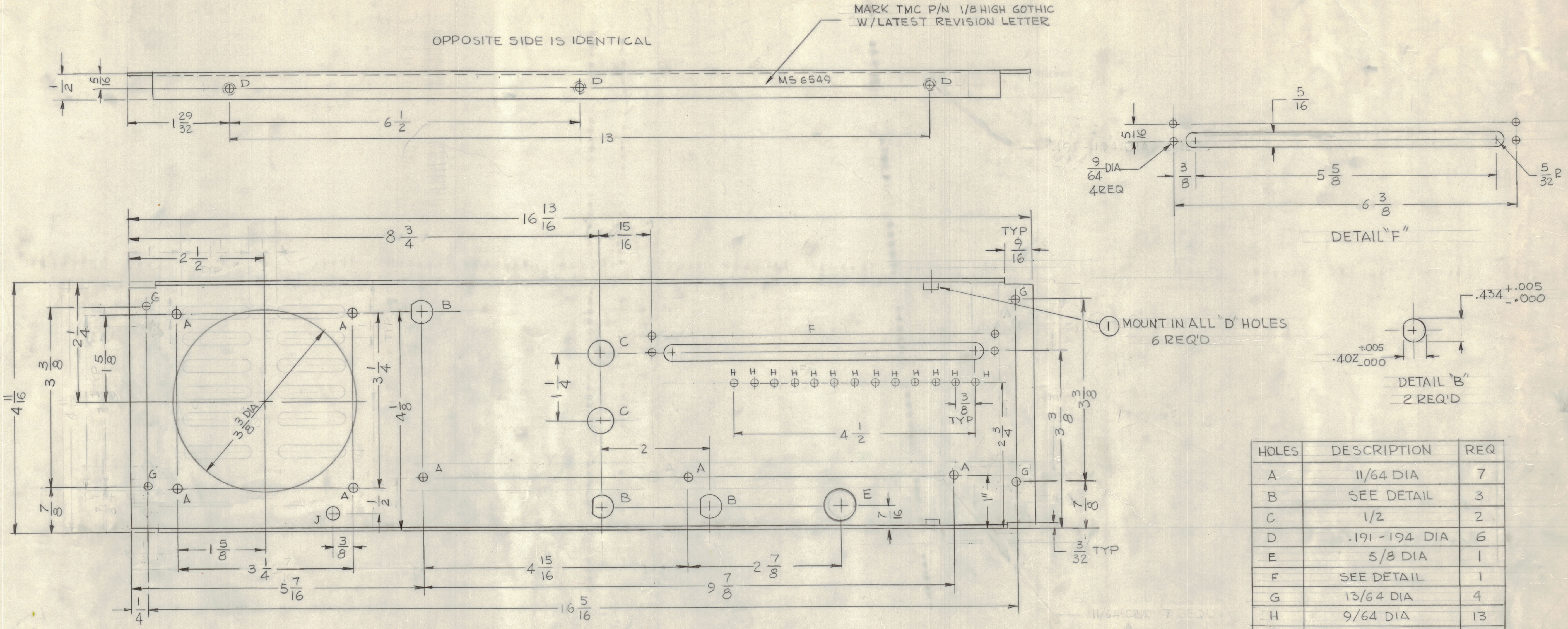


| REVISIONS |       |      |      |     |  |         |          |
|-----------|-------|------|------|-----|--|---------|----------|
| E.M.N.NO  | DRAFT | CHKD | ZONE | LTR | DESCRIPTION  | DATE    | APPROVED |
|           |       |      |      | X1  | ONE "B" HOLE & "H" HOLES ADDED                               | 9-16-74 |          |
|           | CL    |      |      |     | ORIGINAL RELEASE FOR PRODUCTION                              | 1/8/75  |          |
| 21431     | GDL   |      |      | A   | 12 SLOTS DELT "A" HOLES, ONE "H" HOLE & 3 9/8 DIA HOLE ADDED | 7-14-76 | K.P.     |



| HOLES | DESCRIPTION     | REQ |
|-------|-----------------|-----|
| A     | 11/64 DIA       | 7   |
| B     | SEE DETAIL      | 3   |
| C     | 1/2             | 2   |
| D     | .191 - .194 DIA | 6   |
| E     | 5/8 DIA         | 1   |
| F     | SEE DETAIL      | 1   |
| G     | 13/64 DIA       | 4   |
| H     | 9/64 DIA        | 13  |
| J     | 1/4 DIA         | 1   |

UNLESS OTHERWISE SPECIFIED:

- USE MATERIAL THICKNESS FOR MAXIMUM RADIUS ON ALL BENDS.
- ALL ANGULAR BENDS 90 DEGREES.
- REMOVE ALL BURRS AND SHARP EDGES.
- MOUNT INSERTS AFTER FINISHING.

| QTY / UNIT  | MODEL USED ON | ASS'Y NO. |
|-------------|---------------|-----------|
| 1           | HFL-100       |           |
| APPLICATION |               |           |
| CODE        |               |           |

REF: LD 3027

UNLESS OTHERWISE SPECIFIED DIMENSIONS ARE IN INCHES AND INCLUDE CHEMICALLY APPLIED OR PLATED FINISHES

TOLERANCES ON

|             |            |
|-------------|------------|
| DECIMALS    | FRACTIONS  |
| .X = .05    | = 1/64     |
| .XX = .01   | ANGLES     |
| .XXX = .005 | = 0° - 30' |

MATERIAL .064 THK ALUM.  
5052 -H32

FINISH 5404  
YEL IRIDITE

| QTY. REQ. | ITEM | PART NO.    | DESCRIPTION      | SYMBOL |
|-----------|------|-------------|------------------|--------|
| 6         | 1    | NT1290632-4 | NUT, PLAIN ROUND | D      |

LIST OF MATERIAL

THE TECHNICAL MATERIEL CORP.  
MAMARONECK, NEW YORK

PLATE, REAR.

| SIZE | CODE  | IDENT NO. | DWG NO. | ISSUE |
|------|-------|-----------|---------|-------|
| D    | 82679 |           | MS 6549 | A     |

SCALE 1/1 SHEET OF

NOTICE TO PERSONS RECEIVING THIS DRAWING

THE TECHNICAL MATERIEL CORPORATION claims proprietary right in the material disclosed hereon. This drawing is issued in confidence for engineering information only and may not be reproduced or used to manufacture anything shown hereon without permission from THE TECHNICAL MATERIEL CORPORATION to the user. This drawing is loaned for mutual assistance and is subject to recall at any time.