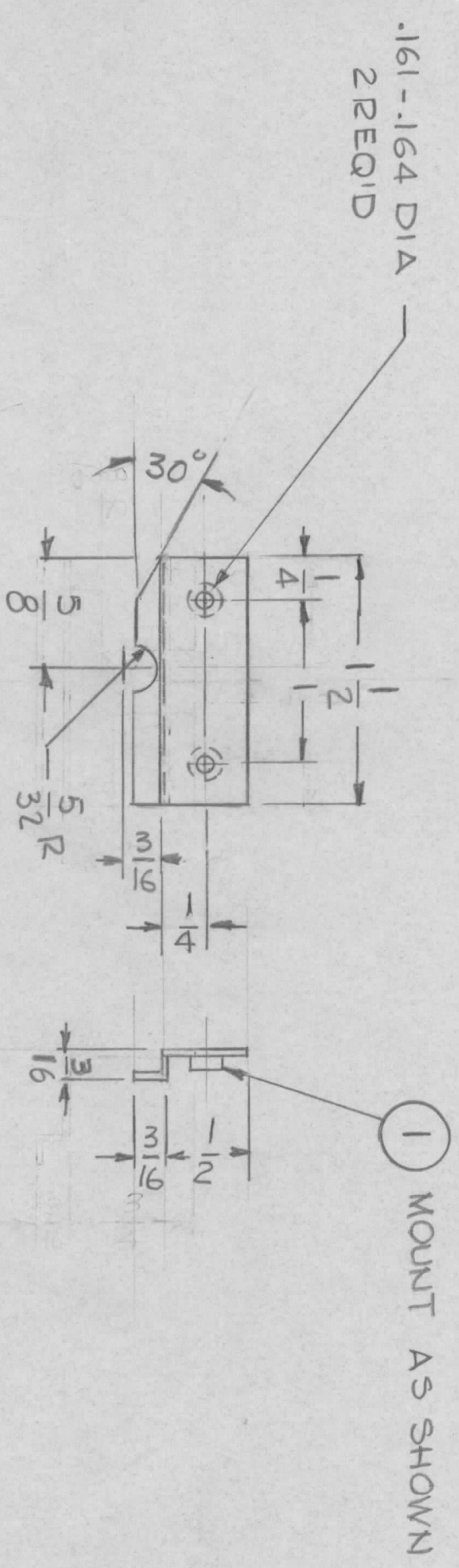


REVISIONS							
EMIN NO.	DRAFT	CHKD	ZONE	LTR	DESCRIPTION	DATE	APPROVED
	gdl				REDRAWN W/CHANGE	7-3-74	
	G.D.L.				ORIGINAL RELEASE FOR PRODUCTION	1-25-77	*



UNLESS OTHERWISE SPECIFIED:

1. USE MATERIAL THICKNESS FOR MAXIMUM RADIUS ON ALL BENDS.
2. ALL ANGULAR BENDS 90 DEGREES.
3. REMOVE ALL BURRS AND SHARP EDGES.

REQ'D	ITEM	PART NUMBER	DESCRIPTION	SYM.
2	1	NT0440-4	NUT, PLAIN ROUND	

QTY / UNIT	1	MODEL USED ON	BMA516 (SPR110)	ASS'Y NO.	A4977
APPLICATION					
CODE					

UNLESS OTHERWISE SPECIFIED DIMENSIONS ARE IN INCHES AND INCLUDE CHEMICALLY APPLIED OR PLATED FINISHES			
DECIMALS	TOLS.	FRACTIONS	ANGLES
.X ± .05	.XX ± .01	1/64	0°-30'
.XXX ± .005			
MATERIAL			
.040 COPPER			
FINISH			
NATURAL			

FINAL APPROVAL				DATE
MECH. DES.				DATE
ELECT. DES.				DATE
CHECKED				DATE
DRAWN				DATE
LIST OF MATERIAL				
THE TECHNICAL MATERIEL CORP.				
MAMARONECK, NEW YORK				
BRACKET, DETENT				
SIZE	CODE IDENT. NO.	DWG NO.	ISSUE	
B	82679	MS 6541	Ø	
SCALE	1:1	SHEET	OF	

NOTICE TO PERSONS RECEIVING THIS DRAWING
 THE TECHNICAL MATERIEL CORPORATION claims proprietary right in the material disclosed hereon. This drawing is issued in confidence for engineering information only and may not be reproduced or used to manufacture anything shown hereon without permission from THE TECHNICAL MATERIEL CORPORATION to the user. This drawing is loaned for mutual assistance and is subject to recall at any time.