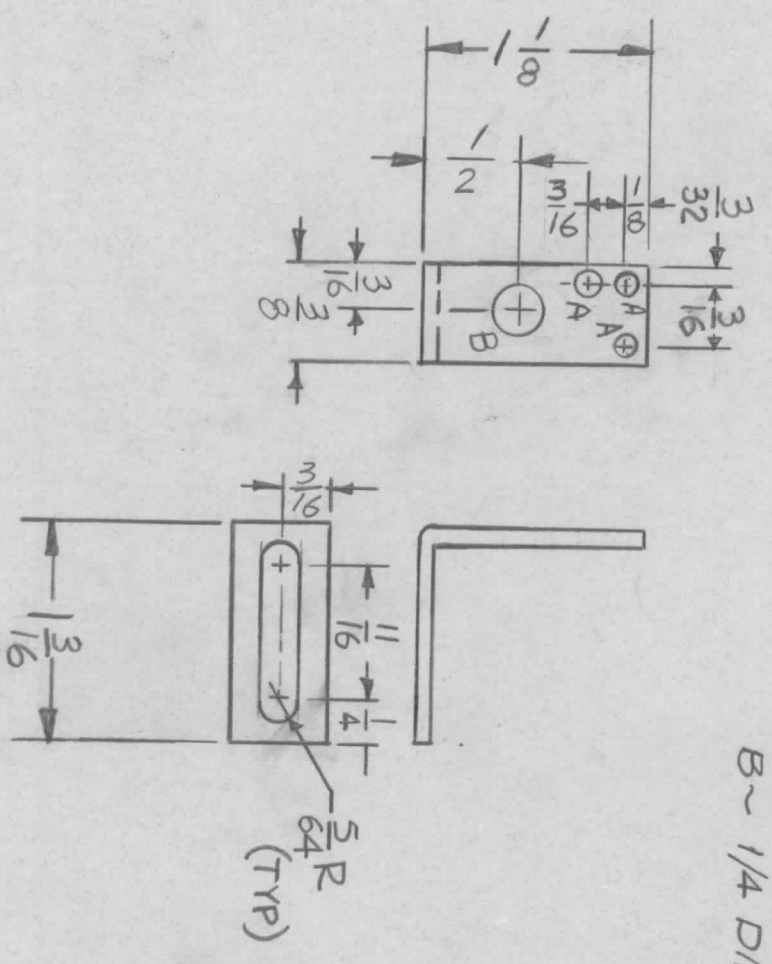


REVISIONS							
EM.N. NO.	DRAFT	CHKD	ZONE	LTR	DESCRIPTION	DATE	APPROVED
	R. 21				ORIGINAL RELEASE FOR PRODUCTION	1-25-77	*

A ~ 7/64 DIA 2 REQ
 B ~ 1/4 DIA 1 REQ



- UNLESS OTHERWISE SPECIFIED:
1. USE MATERIAL THICKNESS FOR MAXIMUM RADIUS ON ALL BENDS.
 2. ALL ANGULAR BENDS 90 DEGREES.
 3. REMOVE ALL BURRS AND SHARP EDGES.
 4. MOUNT INSERTS AFTER FINISHING.

REQ'D	ITEM	PART NUMBER	DESCRIPTION	SYM.
			LIST OF MATERIAL	

FINAL APPROVAL		DATE
MECH. DES.	<i>DDG</i>	1/10/77
ELECT. DES.		DATE
CHECKED		DATE
DRAWN	<i>WVS</i>	DATE

THE TECHNICAL MATERIEL CORP.
 MAMARONECK, NEW YORK

BRACKET, LIGHT SUPPORT

DECIMALS	TOLS.	FRACTIONS	ANGLES
X ± .05		1/64	
.XX ± .01			0° - 30'
.XXX ± .005			

UNLESS OTHERWISE SPECIFIED DIMENSIONS ARE IN INCHES AND INCLUDE CHEMICALLY APPLIED OR PLATED FINISHES
FINISH BLACK MATT
MATERIAL .062 ALUM AL.

QTY / UNIT	MODEL USED ON	ASS'Y NO.
1	GPR110	BMASIS
APPLICATION CODE		

NOTICE TO PERSONS RECEIVING THIS DRAWING
 THE TECHNICAL MATERIEL CORPORATION claims proprietary right in the material disclosed hereon. This drawing is issued in confidence for engineering information only and may not be reproduced or used to manufacture anything shown hereon without permission from THE TECHNICAL MATERIEL CORPORATION to the user. This drawing is loaned for mutual assistance and is subject to recall at any time.