

UNLESS OTHERWISE SPECIFIED:  
 1. USE MATERIAL THICKNESS FOR MAXIMUM RADIUS ON ALL BENDS.  
 2. ALL ANGULAR BENDS 90 DEGREES.  
 3. REMOVE ALL BURRS AND SHARP EDGES.  
 4. MOUNT INSERTS AFTER FINISHING.

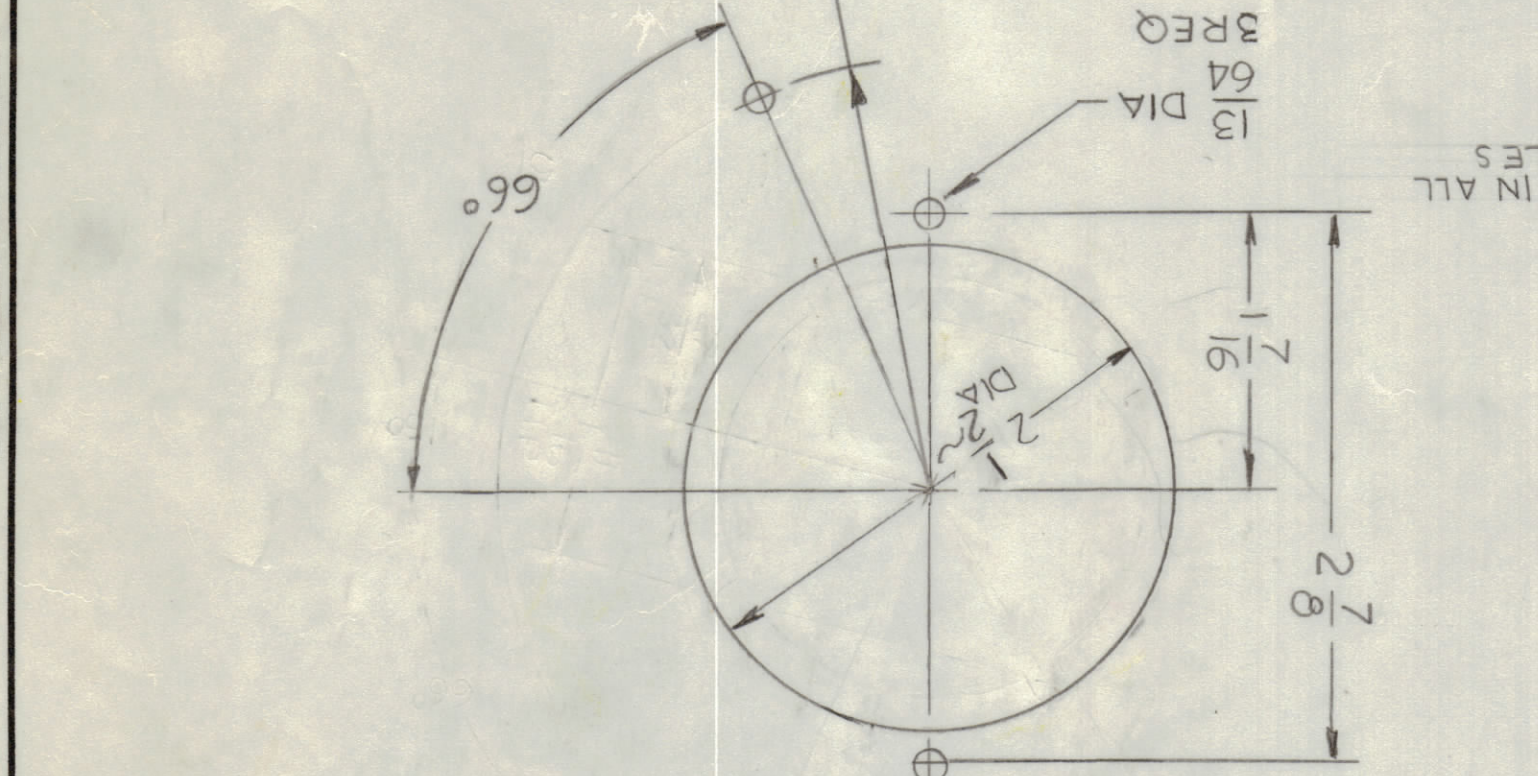
NOTICE TO PERSONS RECEIVING THIS DRAWING  
 THE TECHNICAL MATERIEL CORPORATION claims proprietary right in the material disclosed herein. The drawing is loaned to the recipient for engineering and production use only and shall not be reproduced or used to manufacture anything shown hereon without permission from THE TECHNICAL MATERIEL CORPORATION.

|               |                   |
|---------------|-------------------|
| FINISH        | 5404 YEL IRIDITE  |
| MATERIAL      | ALUMINUM 5032-H32 |
| THICKNESS     | .081 THK          |
| DECIMALS      | XXX ± .005        |
| FRACTIONS     | XX ± .01          |
|               | XX ± .05          |
|               | ± .164            |
| TOLERANCES ON | FRACTIONS         |

|                |            |
|----------------|------------|
| QTY / UNIT     | TMA-1K     |
| MODEL USED ON  | BMA-520    |
| ASSY NO.       |            |
| CODE           |            |
| DATE           | 4-3-74     |
| CHECKED        | G DELUCIA  |
| DATE           | 12-14-74   |
| DRAWN          | F IANNUZZI |
| DATE           | 12-13-74   |
| MECH DES.      | F IANNUZZI |
| DATE           | 12-13-74   |
| ELECT DES.     |            |
| DATE           | 5/5/74     |
| FINAL APPROVAL |            |

| QTY. | ITEM | PART NO.     | DESCRIPTION      | SYMBOL |
|------|------|--------------|------------------|--------|
| 4    | 2    | NT 129-632-4 | NUT PLAIN SPLINE | C      |
| 14   | 1    | NT 129-832-4 | NUT PLAIN SPLINE | J      |

LIST OF MATERIAL  
 THE TECHNICAL MATERIEL CORP.  
 MAMARONECK, NEW YORK



| REQ | DESCRIPTION                        | HOLES |
|-----|------------------------------------|-------|
| A   | 9/64 DIA                           | 12    |
| B   | 11/64 DIA                          | 58    |
| C   | 13/64 DIA                          | 3     |
| D   | 15/64 DIA                          | 5     |
| E   | 9/32 DIA                           | 6     |
| F   | 3/8 DIA                            | 27    |
| G   | 1/2 DIA                            | 1     |
| H   | 1-5/8 DIA                          | 14    |
| J   | .221 - .224 DIA                    | 1     |
| K   | SEE DETAIL                         | 1     |
| L   | 2-5/8 DIA                          | 2     |
| M   | 1-1/4 x 1/2 SLOT                   | 2     |
| N   | 1-3/4 x 3/4 SLOT                   | 1     |
| P   | 2 1/2 x 3/4 SLOT                   | 1     |
| R   | DELL 1/4 DIA C/SNK 82° TO .284 DIA | 2     |
| S   | 5/16 DIA                           | 1     |
| T   | 5/8 DIA                            | 6     |
| U   | 1/4 DIA                            | 5     |
| V   | 1/4 DIA C/SNK 82° TO .284 DIA      | 1     |
| W   | 1/4 DIA                            | 1     |
| X   | 1/20 DIA C/SNK 82° TO .230 DIA     | 2     |

| REV | DESCRIPTION  | DATE     | APPROVED |
|-----|--|----------|----------|
| A   | 8" HOLES & NT 129 ADD  | 5-18-74  |          |
| B   | DIA OF THESE 8" HOLES WAS 3/8 DIA. ONE "HOLE" DETAIL WAS 1/4 DIA. ONE "HOLE" DETAIL ON DETAIL "K" ONE "HOLE" DETAIL WAS 1/4 DIA. | 5-22-74  |          |
| C   | ADDED 2" HOLES, 2" HOLES, 2" HOLES   | 8-21-74  |          |
| D   | REV. LETTERS "A", "B", & "C" SHOULD BE X1, X2, & X3  | 8-21-74  |          |
| E   | "K" DETAIL REVISED SLOT DELETED 2 5/8 DIA  | 11-8-74  |          |
| F   | WAS 2 1/8 - DIMS 11/16 WAS 11/16 - TWO T-HOLES   | 11-8-74  |          |
| G   | & ONE "HOLE" DETAIL B, ONE "HOLE" DETAIL   | 11-8-74  |          |
| H   | ON ZONE 6 T-HOLE WAS "F" & 2" HOLES ADD  | 11-8-74  |          |
| I   | U-HOLES WERE "B" HOLES   | 11-8-74  |          |
| J   | DIM. 9/16 WAS "V" DIM. 1" WAS 1 1/16 - 2 HOLES "B" HOLE  | 11-8-74  |          |
| K   | 3" HOLE DEL. "V" HOLE WAS "B" HOLE. ONE "HOLE" DETAIL  | 11-26-74 |          |
| L   | ON DETAIL "K" 2 1/2 DIA WAS 2 5/8  | 11-26-74 |          |
| M   | ITEM 3 ADD   | 11-26-74 |          |
| N   | TWO "C" HOLES DELETED 4" HOLES ADD   | 12-2-74  |          |
| O   | DIM 1 1/8 WAS 4 1/8. FOUR "C" HOLES WERE 2 HOLES   | 12-2-74  |          |
| P   | 3" HOLE DEL. - DEL. 2" HOLES ADD. 2 HOLES  | 12-2-74  |          |
| Q   | CHANGED TWO "V" HOLES TO "B" HOLES &   | 1-21-75  |          |
| R   | TWO "B" HOLES TO "V" HOLES   | 1-21-75  |          |
| S   | ONE "HOLE" DEL. ONE "HOLE" ADD   | 1-21-75  |          |
| T   | 3" HOLE DEL. - DEL. 2" HOLES ADD. 2 HOLES  | 1-21-75  |          |
| U   | ORIGINAL RELEASE FOR PRODUCTION  | 3-18-75  |          |
| V   | ONE "A" HOLE ADD   | 1-30-75  |          |
| W   | TWO "W" HOLES ADDED  | 10-12-75 |          |

