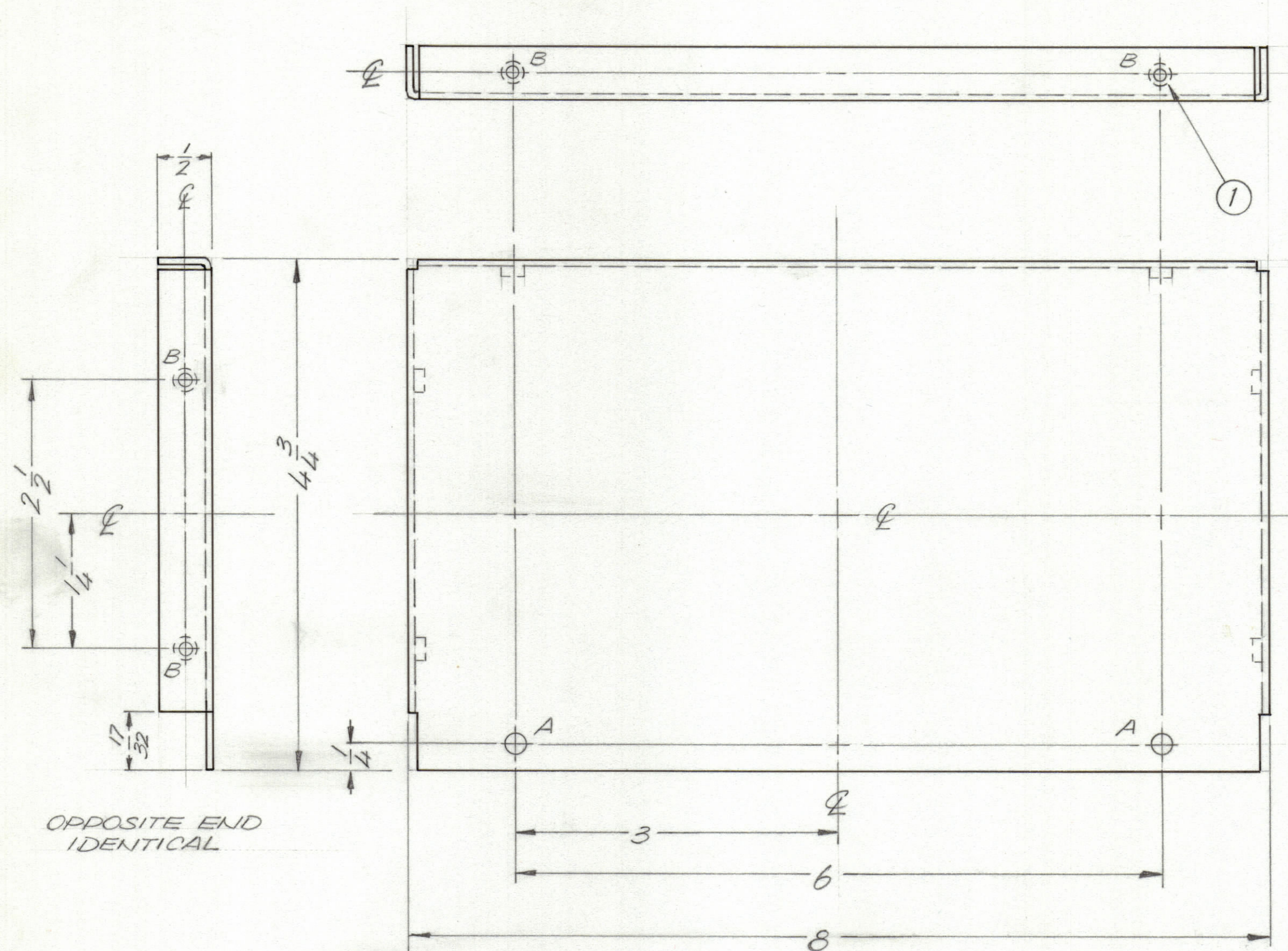


REVISIONS						
ZONE	LTR	DESCRIPTION	DATE	E.M.N.NO	DRAFT	CHKD APPD
	Ø	ORIGINAL RELEASE FOR PRODUCTION	6/6/75		AK	



HOLE DESCRIPTION REQ.

A	3/16 DIA.	2
B	.191 .194	6

UNLESS OTHERWISE SPECIFIED:

1. USE MATERIAL THICKNESS FOR MAXIMUM RADIUS ON ALL BENDS.
2. ALL ANGULAR BENDS 90 DEGREES.
3. REMOVE ALL BURRS AND SHARP EDGES.
4. MOUNT INSERTS AFTER FINISHING.

6	1	NT1290632-4	NUT, ROUND	B
QTY. REQ.	ITEM	PART NO.	DESCRIPTION	SYMBOL

LIST OF MATERIAL

UNLESS OTHERWISE SPECIFIED DIMENSIONS ARE IN INCHES AND INCLUDE CHEMICALLY APPLIED OR PLATED FINISHES

TOLERANCES ON

DECIMALS	FRACTIONS
.X ± .05	± 1/64
.XX ± .01	ANGLES
.XXX ± .005	± 0° -30'

MATERIAL .064 ALUM
5052 H32

FINISH SL04
YELLOW IRIDITE

FINAL APPROVAL: *DB* DATE: 5/21/75

MECH. DES. DATE

ELECT. DES. DATE

CHECKED DATE

DRAWN: *QE* DATE: 2/11/74

THE TECHNICAL MATERIEL CORP.
MAMARONECK, NEW YORK

PLATE, SIDE LEFT, RIGHT

2	THRA-2	
QTY / UNIT	MODEL USED ON	ASS'Y NO.
APPLICATION		
CODE		
NOTICE TO PERSONS RECEIVING THIS DRAWING		
THE TECHNICAL MATERIEL CORPORATION claims proprietary right in the material disclosed hereon. This drawing is issued in confidence for engineering information only and may not be reproduced or used to manufacture anything shown hereon without permission from THE TECHNICAL MATERIEL CORPORATION to the user. This drawing is loaned for mutual assistance and is subject to recall at any time.		

SIZE	CODE IDENT.NO.	DWG NO.	ISSUE
C	82679	MS 6521	Ø
SCALE 1:1	SHEET		OF