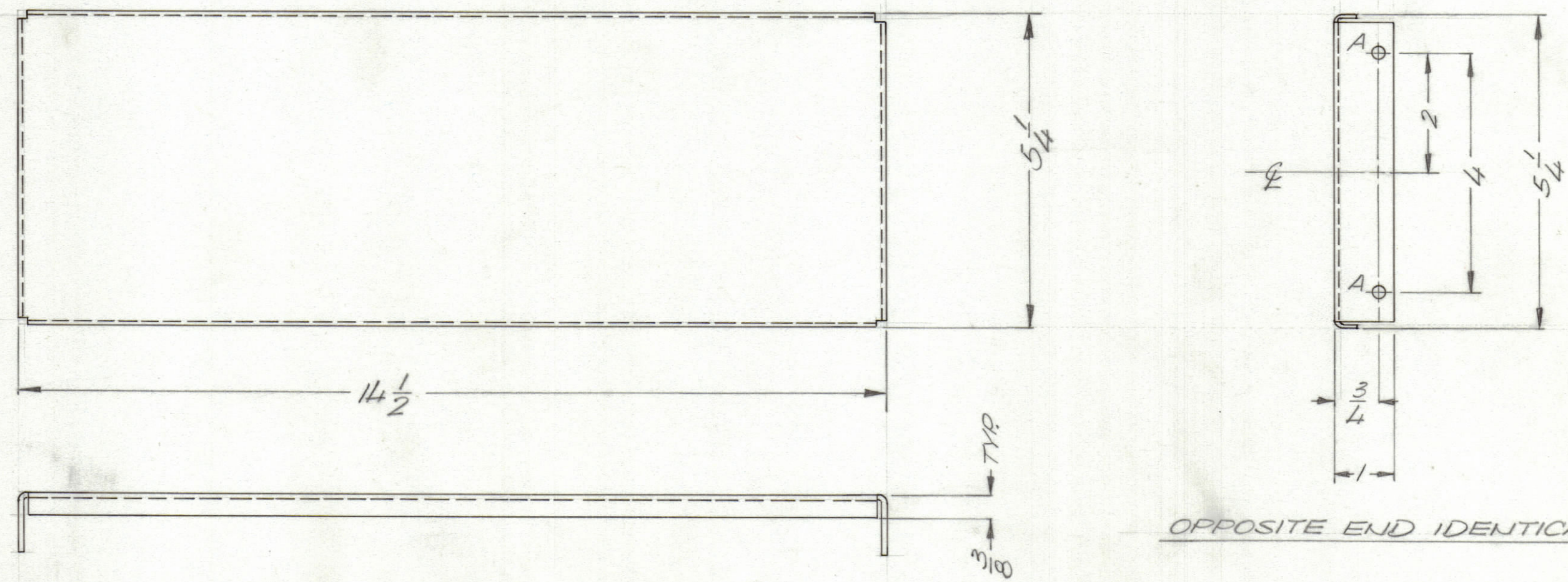


ENGINEERING SKETCH

NOT FOR PRODUCTION

REVISIONS						
ZONE	LTR	DESCRIPTION	DATE	E.M.N.NO	DRAFT	CHKD APPD
	Ø	ORIGINAL RELEASE FOR PRODUCTION	4-10-74		DV	



HOLE DESCRIPTION REQ.
A — 3/16 DIA. — 2

1	ATSA	AX5176
QTY / UNIT	MODEL USED ON	ASS'Y NO.
APPLICATION		
CODE		

NOTICE TO PERSONS RECEIVING THIS DRAWING
THE TECHNICAL MATERIEL CORPORATION claims proprietary right in the material disclosed hereon. This drawing is issued in confidence for engineering information only and may not be reproduced or used to manufacture anything shown hereon without permission from THE TECHNICAL MATERIEL CORPORATION to the user. This drawing is loaned for mutual assistance and is subject to recall at any time.

UNLESS OTHERWISE SPECIFIED DIMENSIONS ARE IN INCHES AND INCLUDE CHEMICALLY APPLIED OR PLATED FINISHES

TOLERANCES ON
 DECIMALS .X ± .05
 .XX ± .01
 .XXX ± .005
 FRACTIONS ± 1/64
 ANGLES ± 0° -30'

MATERIAL .064 ALUM. PERE
 .072 DIA HLS ON 1/8 CENTRS.
 FINISH 5404
 YELLOW IRIDITE

QTY. REQ.	ITEM	PART NO.	DESCRIPTION	SYMBOL
LIST OF MATERIAL				
THE TECHNICAL MATERIEL CORP. MAMARONECK, NEW YORK				
COVER, DESSICANT				
FINAL APPROVAL <i>[Signature]</i>		DATE		
MECH. DES.		DATE		
ELECT. DES.		DATE		
CHECKED <i>[Signature]</i>		DATE		
DRAWN <i>[Signature]</i>		DATE 1/29/74		
SIZE	CODE	IDENT. NO.	DWG NO.	ISSUE
C	82679	MS	6516	Ø
SCALE 1/2		SHEET		OF

4

3

2

1

4

3

2

1

6516