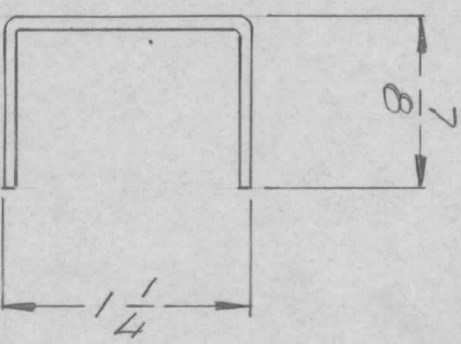
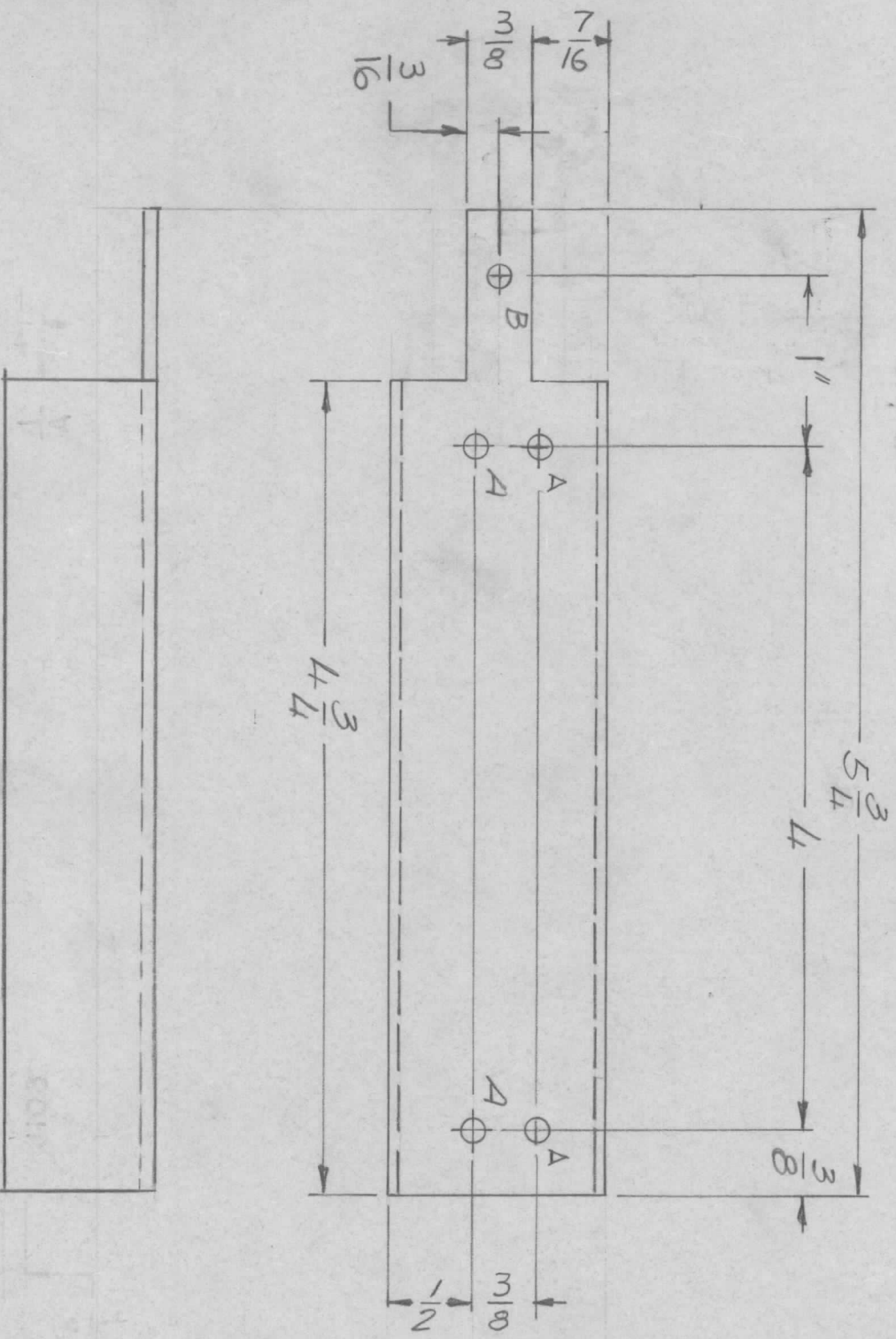


REVISIONS				DATE	APPROVED
E.M.N. NO.	DRAFT	CHKD	ZONE	LTR	DESCRIPTION
				X1	"A" HOLE WAS 9/64 DIA. TWO "A" HOLES "B" HOLES MARKING ADD
				X2	MARKING NOTE & LETTERING DELETED
				Ø	ORIGINAL RELEASE FOR PRODUCTION



HOLE DESCRIPTION REQ.

A — 11/64 DIA. — 4

B — 9/64 DIA. — 1

REF: LD 3051

LIST OF MATERIAL

THE TECHNICAL MATERIEL CORP.
MAMARONECK, NEW YORK

COVER, CONJECTOR

QTY / UNIT / MODEL USED ON / ASSY NO.

1 / GPR 110 / BMD SIS

APPLICATION CODE

NOTICE TO PERSONS RECEIVING THIS DRAWING
THE TECHNICAL MATERIEL CORPORATION claims proprietary right in the material disclosed hereon. This drawing is issued in confidence for engineering information only and may not be reproduced or used to manufacture anything shown hereon without permission from THE TECHNICAL MATERIEL CORPORATION to the user. This drawing is loaned for mutual assistance and is subject to recall at any time.

UNLESS OTHERWISE SPECIFIED DIMENSIONS ARE IN INCHES AND INCLUDE CHEMICALLY APPLIED OR PLATED FINISHES

DECIMALS FRACTIONS
X ± .05 TOLS. 1/64
XX ± .01 ANGLES
.XXX ± .005 0° - 30'

MATERIAL. 064 ALUM
5052 H32

FINISH SH04
YEL IRIDITE

REQ'D ITEM PART NUMBER DESCRIPTION SYM.

FINAL APPROVAL
MECH. DES. DATE
ELECT. DES. DATE
CHECKED DATE
DRAWN DATE

928
11/20/77
9E

SIZE CODE IDENT. NO. DWG NO. ISSUE
B 82679 MS 6514 Ø
SCALE 1:1 SHEET OF