

**FINISH NOTES:**

- 3904 - IRIDITE 14-2 AL-COAT.
- 3114 - ZINC CHROMATE PRIMER
- 3520 - BLUE GREY TEXTURED VINYL

PRIME AND PAINT PER CUSTOMER'S SPECIFICATIONS

APPLICATION	
QTY / UNIT	MODEL USED ON
1	ATU-350
ASSY NO.	
CODE	
MATERIAL AS NOTED	
FINISH AS NOTED	

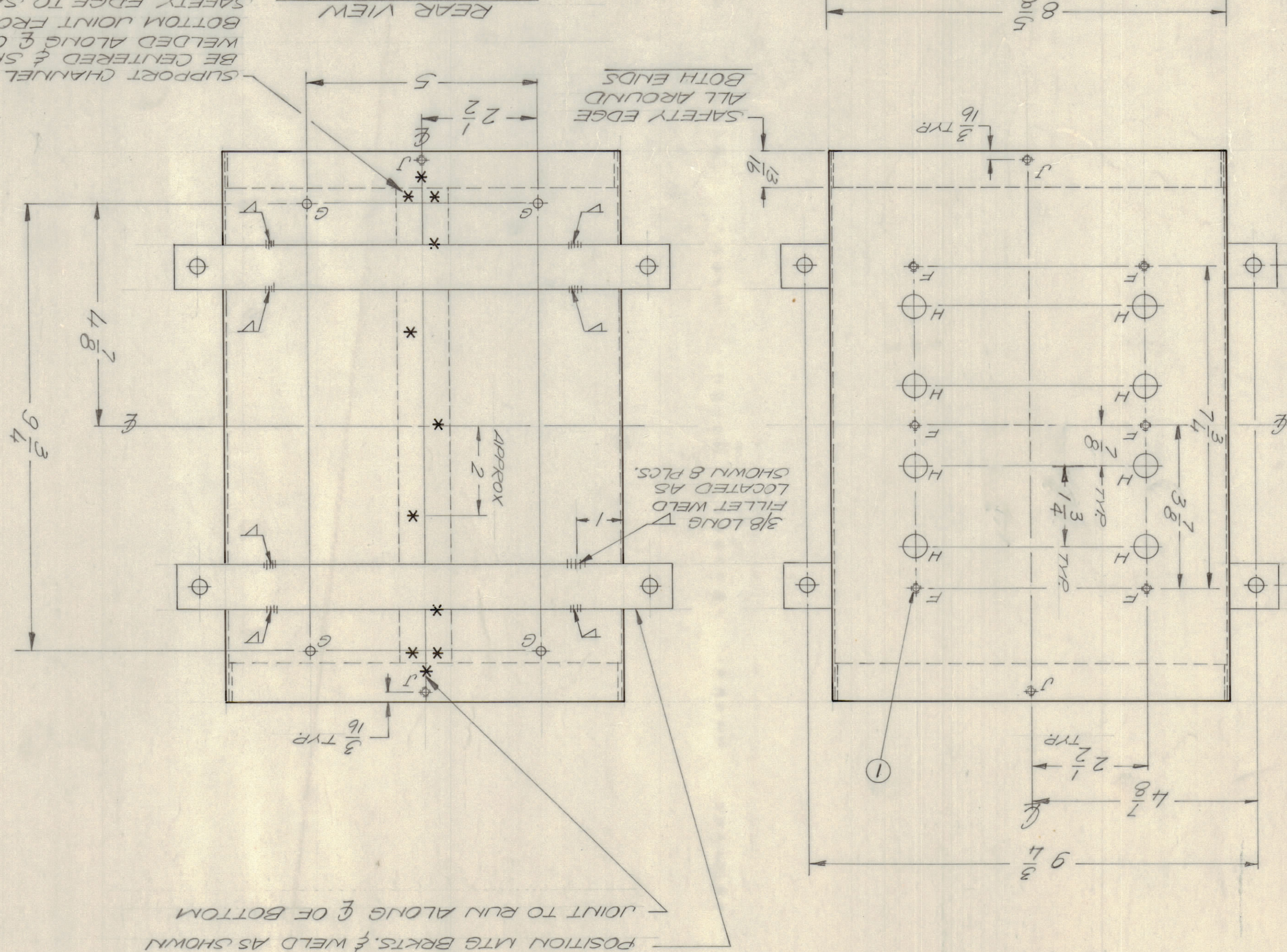
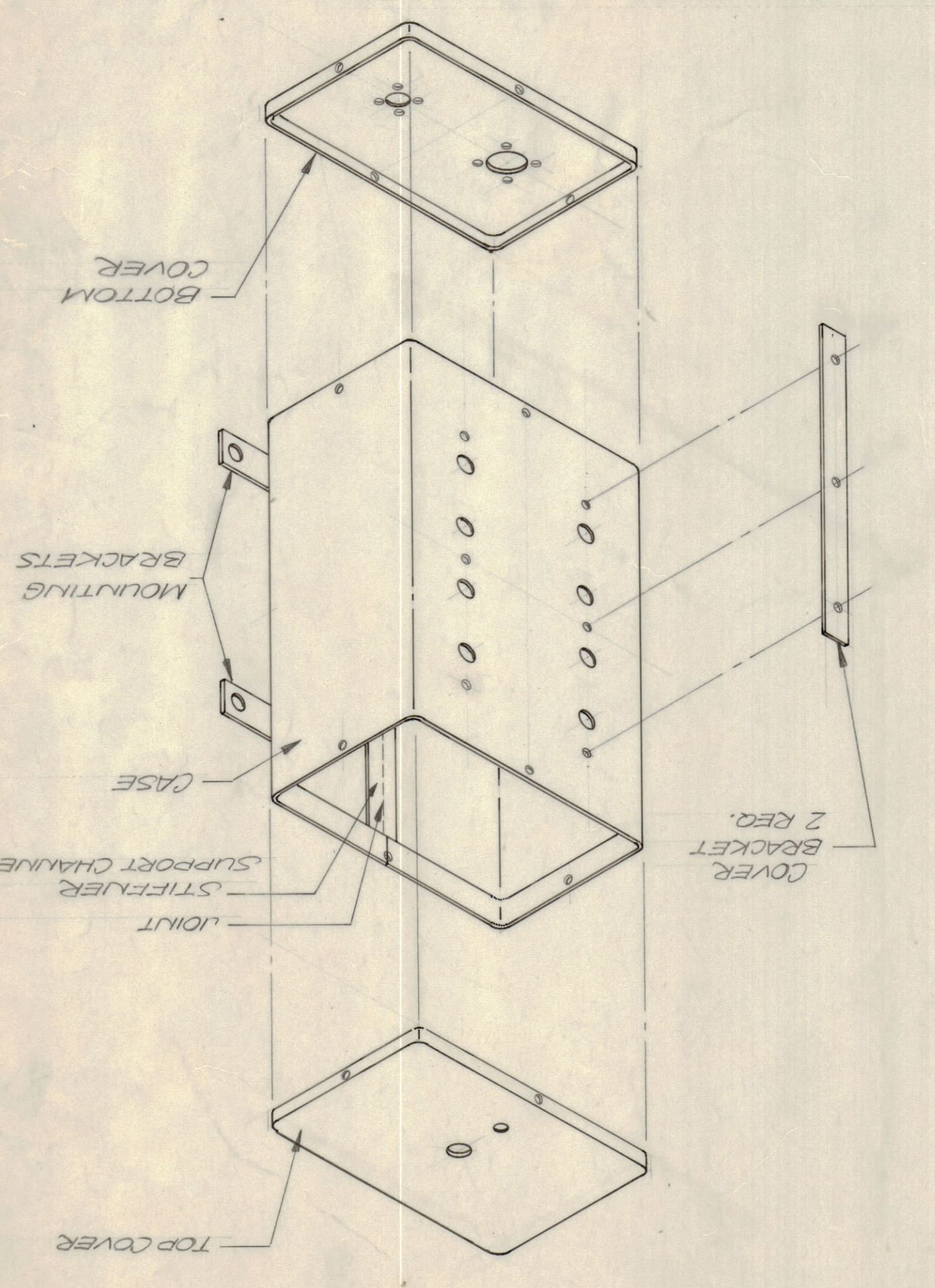
TOLERANCES ON	
DECIMALS	± 0.005
ANGLES	± 0.01
FRACTIONS	± 0.01
UNLESS OTHERWISE SPECIFIED DIMENSIONS ARE IN INCHES AND INCLUDE CHEMICALLY APPLIED OR PLATED FINISHES	

DATE	9/11/74
DATE	9/11/74
DATE	9/11/74
DATE	9/11/74
DATE	9/11/74
DATE	9/11/74
DATE	9/11/74
DATE	9/11/74
DATE	9/11/74
DATE	9/11/74
DATE	9/11/74
DATE	9/11/74
DATE	9/11/74
DATE	9/11/74

**THE TECHNICAL MATERIEL CORP.**  
MAMARONECK, NEW YORK

QTY.	REQ.	ITEM	PART NO.	DESCRIPTION	SYMBOL
6	1	NT1290632-4	NUT, ROUND		F

LIST OF MATERIAL	
DESCRIPTION	PART NO.
REVISIONS	
DATE	DESCRIPTION
4-5-74	ORIGINAL RELEASE FOR PRODUCTION



- MATERIAL NOTE**
- COVERS, TOP & BOTTOM ARE TO BE MANUFACTURED FROM 16 GA CRS (.059). CASE, COVERS, COVER BRACKETS AND SUPPORT CHANNEL TWO MOUNTING BRACKETS ARE TO BE MANUFACTURED FROM 11 GA. CRS (.119) ONLY.
- A — 9/16 DIA. (U/O TOP COVER — 1 REQ.)
  - B — 13/16 DIA. (U/O TOP COVER — 1 REQ.)
  - C — SEE C DETAIL (BOTTOM COVER — 1 PER COVER)
  - D — SEE D DETAIL (BOTTOM COVER — 1 PER COVER)
  - E — 11/64 DIA. (TOP & BOTTOM COVERS — 4 PER COVER)
  - F — .191 - .194 (CASE) — 6
  - G — 3/16 DIA. (CASE) — 14
  - H — 1/2 DIA. (CASE) — 6
  - I — 1/4 DIA. (CASE) — 14
  - J — DRILL & TAP 0632 (CASE) — 8