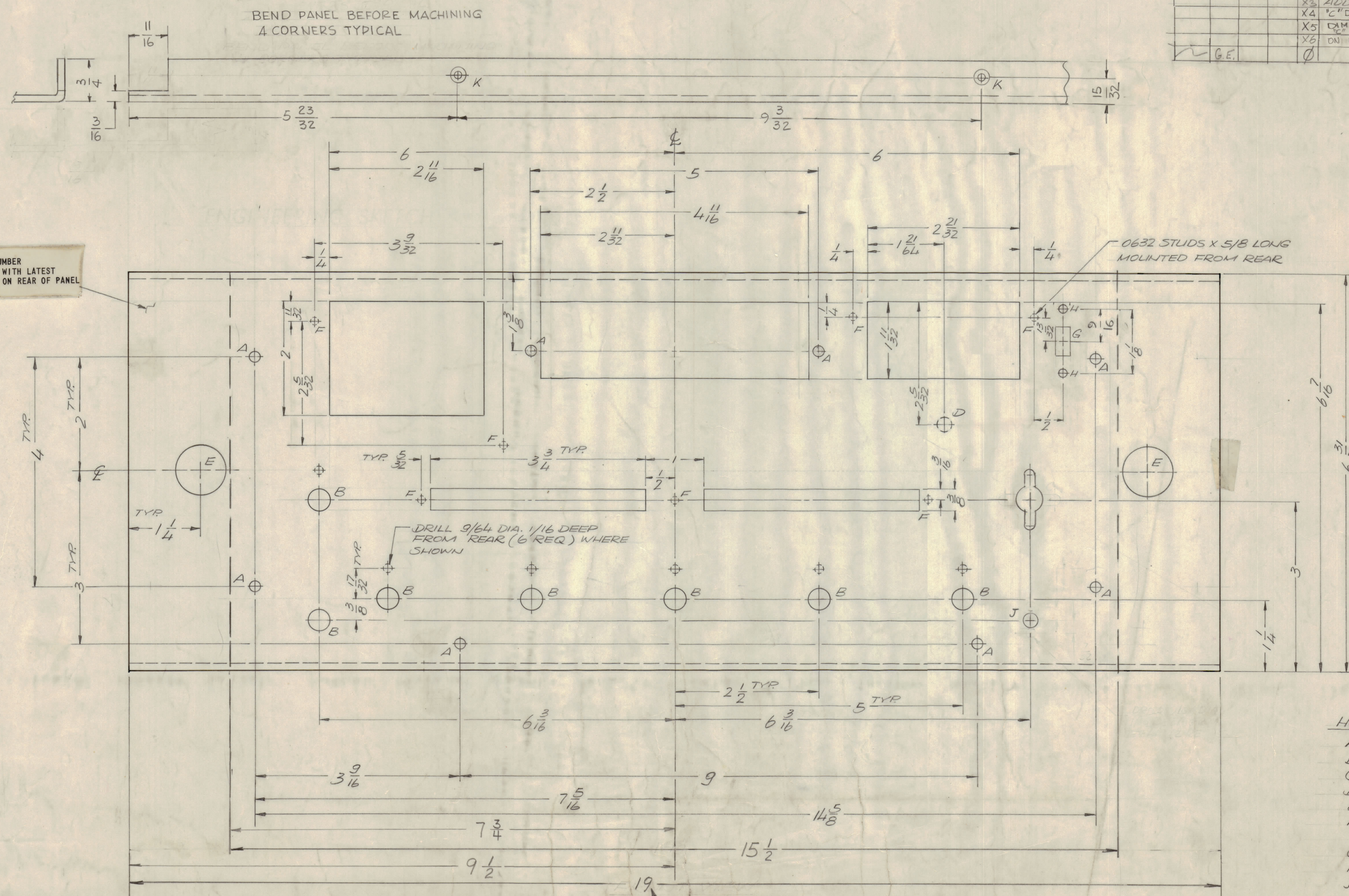
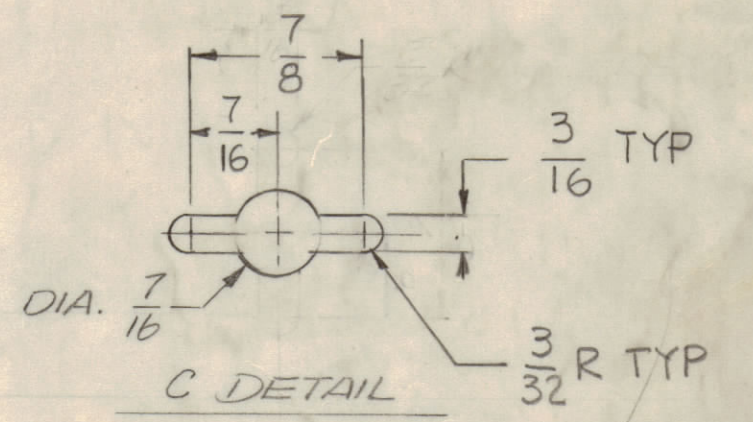


				REVISIONS		
E.M.N.O/DRAFT	CHKD	ZONE	LTR	DESCRIPTION	DATE	APPROVED
			X1	ENLARGE DISPLAY WINDOW/DELE SHT 2	1/18/74	
			X2	REVISED 'C' HOLE TO 'C' DETAIL	2/15/74	
			X3	ADD G CUTOUT	2-2-74	
			X4	'C' DETAIL WAS ON 90° 'K' HOLE ADDED	7-8-75	
			X5	DIMS. & NOTE FOR HOLE 1 & 2 ADDED	9-25-75	
			X6	ON MS 6505-2 DIM 15-5/8 WAS 15 1/2	1-26-77	*
G.E.				ORIGINAL RELEASE FOR PRODUCTION		



MARK TMC PART NUMBER
1/8 HIGH GOTHIC WITH LATEST
REVISION LETTER ON REAR OF PANEL



HOLE DESCRIPTION REQ.

A	3/16 DIA.	6
B	3/8 DIA.	7
C	SEE 'C' DETAIL	1
D	3/8 C'BORE X 1/16 DEEP FROM REAR	1
E	7/8 DIA.	2
F	0632 STUDS X 5/8 LONG - 7 MOUNTED FROM REAR	7
G	9/32 X 17/32 CUTOUT	1
H	9/64 DIA.	2
J	1/4 DIA	1
K	.144 DIA. CSNK 82° TO .284 DIA	2 REQ

NOTE:
MS 6505-1 LENGTH 19"
MS 6505-2 LENGTH 15-5/8"

FINISH NOTES:
1. S404 - IRIDITE 14-2 AL-COAT.
2. S114 - ZINC CHROMATE PRIMER } FRONT AND
3. S115 - SMOOTH GRAY ENAMEL } EDGES ONLY
OR
PRIME AND PAINT PER CUSTOMER'S SPECIFICATIONS

QTY / UNIT	MODEL USED ON	ASS'Y NO.
1	GPR 110	BMA S14
APPLICATION		
CODE		
NOTICE TO PERSONS RECEIVING THIS DRAWING		
THE TECHNICAL MATERIEL CORPORATION claims proprietary right in the material disclosed hereon. This drawing is issued in confidence for engineering information only and may not be reproduced or used to manufacture anything shown hereon without permission from THE TECHNICAL MATERIEL CORPORATION to the user. This drawing is loaned for mutual assistance and is subject to recall at any time.		

QTY. REQ.	ITEM	PART NO.	DESCRIPTION	SYMBOL
	F. BUDETTI		LIST OF MATERIAL	
	FINAL APPROVAL	DATE		
	MECH. DES.	DATE		
	ELECT. DES.	DATE		
	CHECKED	DATE		
	DRAWN	DATE		
UNLESS OTHERWISE SPECIFIED DIMENSIONS ARE IN INCHES AND INCLUDE CHEMICALLY APPLIED OR PLATED FINISHES				
TOLERANCES ON				
DECIMALS		FRACTIONS		
.X ± .05		± 1/64		
.XX ± .01		ANGLES		
.XXX ± .005		= 0° - 30°		
MATERIAL				
1/8 THK ALUM				
FINISH				
AS NOTED				
SIZE			CODE IDENT NO. DWG NO.	ISSUE
D			82679 MS 6505 - 1	1
SCALE 1:1			SHEET OF	