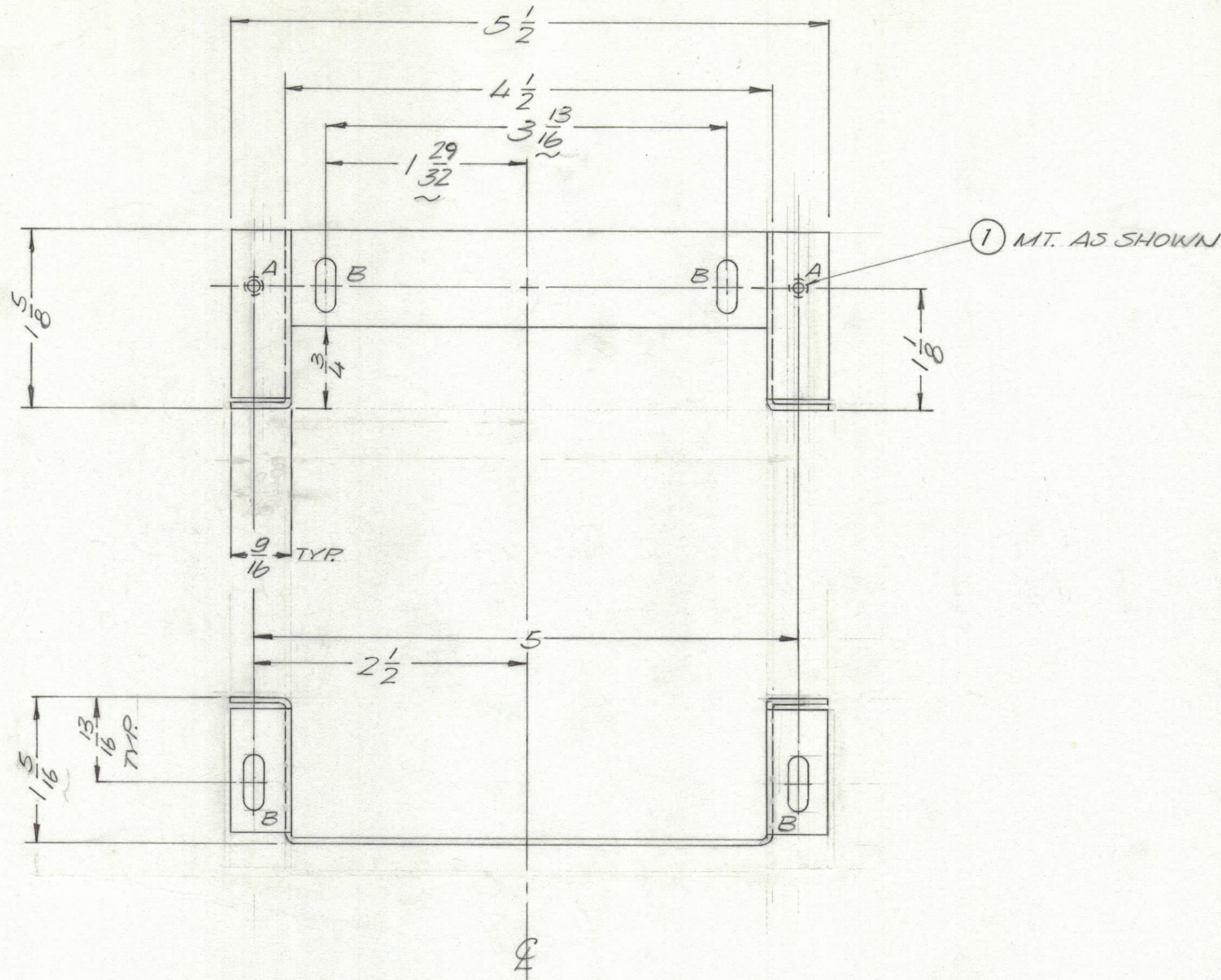


ENGINEERING SKETCH

NOT FOR PRODUCTION

REVISIONS						
ZONE	LTR	DESCRIPTION	DATE	E.M.N.NO	DRAFT	CHKD APPD
	Ø	ORIGINAL RELEASE FOR PRODUCTION	1-25-77		G.E.	✓



HOLE DESCRIPTION REQ.

- A—.161-.164 DIA.— 2
- B— 11/64 x 1/2 SLOT— 4

RR says no tool for this slot

B-HOLE TO BE 3/16 BY 1/2

Special Deliv.
6493
+ LD #2

- UNLESS OTHERWISE SPECIFIED:
- USE MATERIAL THICKNESS FOR MAXIMUM RADIUS ON ALL BENDS.
 - ALL ANGULAR BENDS 90 DEGREES.
 - REMOVE ALL BURRS AND SHARP EDGES.
 - MOUNT INSERTS AFTER FINISHING.

1	GPR 110	BMA514
QTY / UNIT	MODEL USED ON	ASS'Y NO.
APPLICATION		
CODE		
<p>NOTICE TO PERSONS RECEIVING THIS DRAWING</p> <p>THE TECHNICAL MATERIEL CORPORATION claims proprietary right in the material disclosed hereon. This drawing is issued in confidence for engineering information only and may not be reproduced or used to manufacture anything shown hereon without permission from THE TECHNICAL MATERIEL CORPORATION to the user. This drawing is loaned for mutual assistance and is subject to recall at any time.</p>		

UNLESS OTHERWISE SPECIFIED DIMENSIONS ARE IN INCHES AND INCLUDE CHEMICALLY APPLIED OR PLATED FINISHES

TOLERANCES ON

DECIMALS	FRACTIONS
.X ± .05	± 1/64
.XX ± .01	ANGLES
.XXX ± .005	± 0° -30'

MATERIAL .064 ALUM.
5052 H 32

FINISH
BLACK MATT

2	1	NT1290440	NUT, ROUND	A		
QTY. REQ.	ITEM	PART NO.	DESCRIPTION	SYMBOL		
F. BUDETTI LIST OF MATERIAL						
FINAL APPROVAL	DATE	THE TECHNICAL MATERIEL CORP. MAMARONECK, NEW YORK				
MECH. DES.	DATE	HOUSING, READOUT				
ELECT. DES.	DATE					
CHECKED	DATE					
DRAWN	DATE					
			SIZE	CODE IDENT. NO.	DWG NO.	ISSUE
			C	82679	MS 6494	Ø
SCALE 1:1			SHEET	OF		

7679 SW
MS 6494