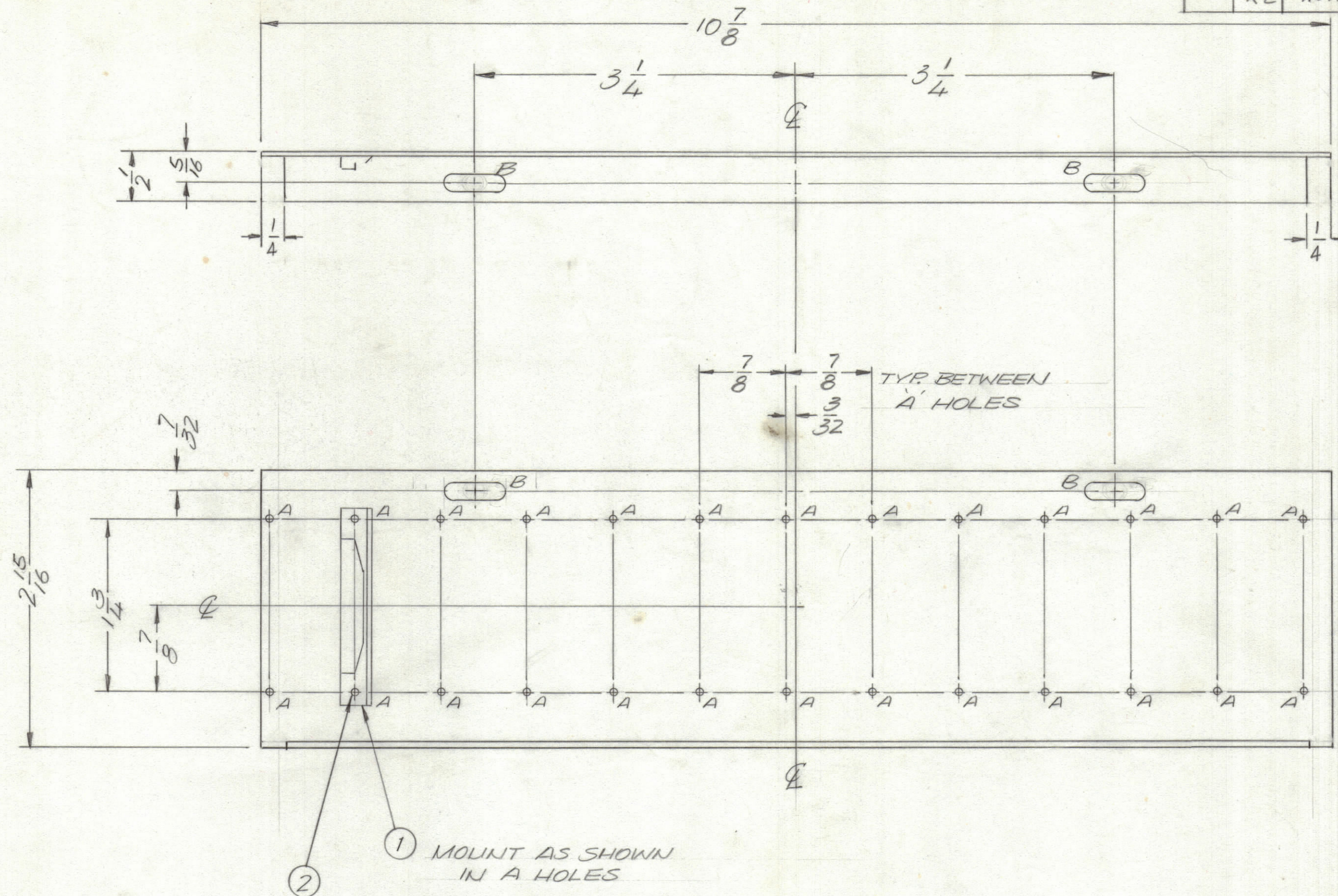


# ENGINEERING SKETCH

NOT FOR PRODUCTION

REVISIONS						
ZONE	LTR	DESCRIPTION	DATE	EMN#	DRAFT	CHKD
Ø		ORIGINAL RELEASE	1-25-77		G.E.	

REVISIONS						
ZONE	LTR	DESCRIPTION	DATE	E.M.N.NO	DRAFT	CHKD
X		HEIGHT WAS 2 13/16	6/21/73			
X1		B SLOTS WERE 5/8	7/30/73			
X2		NOTCHS 1/4 ADDED	7-3-75		SDL	



HOLE DESCRIPTION REQ.

A	.067 DIA.	26
B	11/64 x 1/4	4

3/16 x 1

1 MOUNT AS SHOWN IN A HOLES  
2

QTY. REQ.	ITEM	PART NO.	DESCRIPTION	SYMBOL
26	2	EY100-5	EYLET RIVET	
13	1	CU157-2	RETAINER PC BOARD	

**F. BUDETTI** LIST OF MATERIAL

FINAL APPROVAL: *[Signature]* DATE: 1/10/77

MECH. DES. DATE: \_\_\_\_\_

ELECT. DES. DATE: \_\_\_\_\_

CHECKED DATE: \_\_\_\_\_

DRAWN: *GE* DATE: 6/4/73

**THE TECHNICAL MATERIEL CORP.**  
MAMARONECK, NEW YORK

BRACKET, P.C. BOARD GUIDE

SIZE	CODE IDENT.NO.	DWG NO.	ISSUE
C	82679	MS 6492	Ø

SCALE 1:1 SHEET OF

4	GPR 110	BMA 515
QTY / UNIT	MODEL USED ON	ASS'Y NO.
APPLICATION		
CODE		

NOTICE TO PERSONS RECEIVING THIS DRAWING

THE TECHNICAL MATERIEL CORPORATION claims proprietary right in the material disclosed hereon. This drawing is issued in confidence for engineering information only and may not be reproduced or used to manufacture anything shown hereon without permission from THE TECHNICAL MATERIEL CORPORATION to the user. This drawing is loaned for mutual assistance and is subject to recall at any time.

- UNLESS OTHERWISE SPECIFIED:
- USE MATERIAL THICKNESS FOR MAXIMUM RADIUS ON ALL BENDS.
  - ALL ANGULAR BENDS 90 DEGREES.
  - REMOVE ALL BURRS AND SHARP EDGES.
  - MOUNT INSERTS AFTER FINISHING.

MS 6492