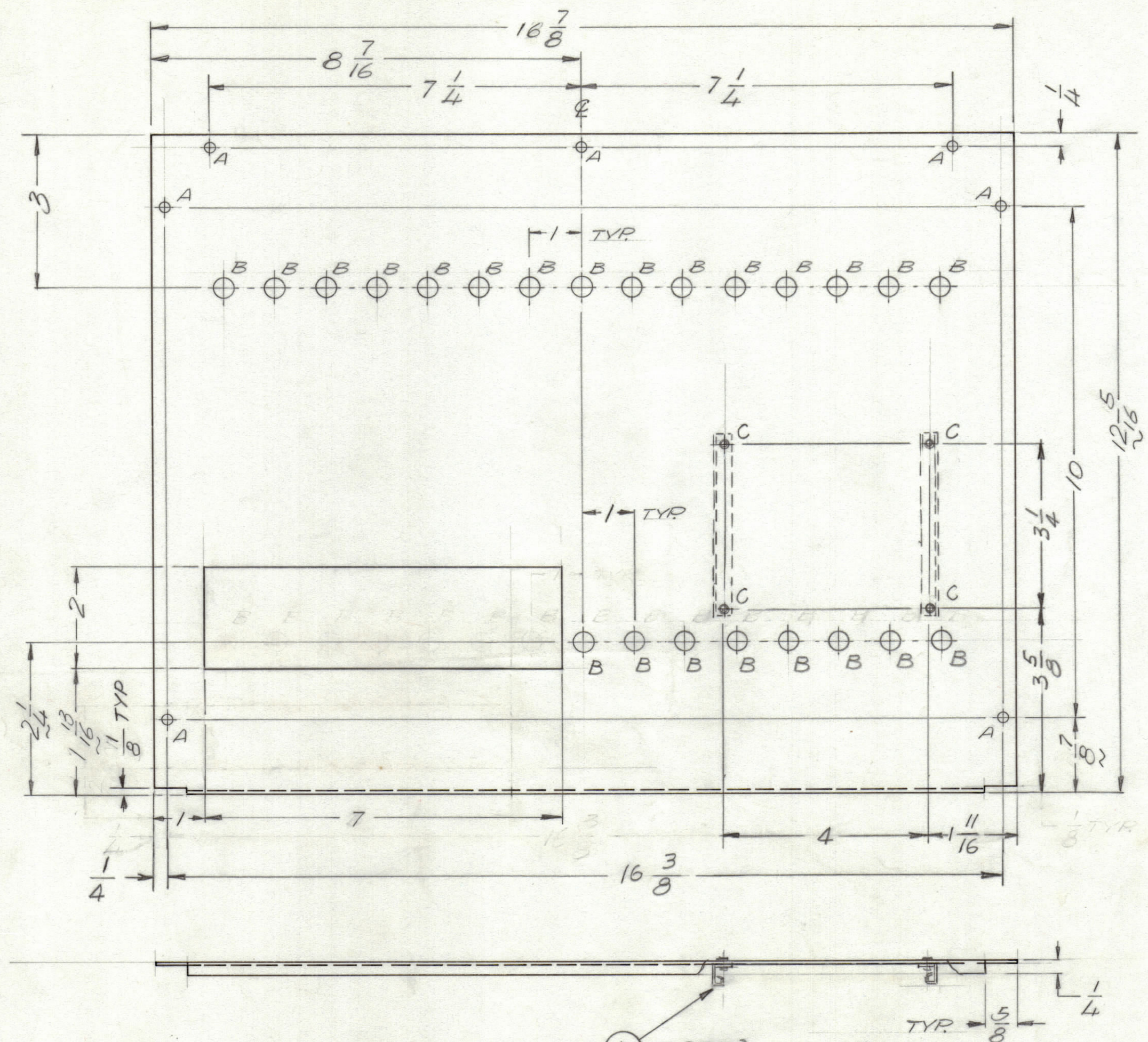


REVISIONS						
ZONE	LTR	DESCRIPTION	DATE	E.M.N.NO	DRAFT	CHKD APPD
	Ø	ORIGINAL RELEASE FOR PRODUCTION	11/8/73		DV	
	A	ITEMS 1 & 2 ADDED	5/30/74	21158	GD L	EJ EJ



HOLE DESCRIPTION REQ.

A — 3/16 DIA. — 7

B — 3/8 DIA. — 23

C — 9/64 DIA — 4 (TOP COVER ONLY)

PART NO. SIDE DESCRIPTION

MS6450-1 — TOP — AS SHOWN

MS6450-2 — BOTTOM — SAME AS TOP MINUS CUTOUT (LOWER LEFT)

① 4 REQ. } USED ONLY
 ② 2 REQ. } ON TOP COVER

ASSY	QTY. REQ.	ITEM	PART NO.	DESCRIPTION	SYMBOL
MS6450-1	4	2	EY100-1	EYELET, FLAT FLANGE	
MS6450-2	2	1	MS5151-1	BRACKET, MTG RETAINER PC BD	

LIST OF MATERIAL					
FINAL APPROVAL	DATE	THE TECHNICAL MATERIEL CORP.			
<i>[Signature]</i>	11/4/73	MAMARONECK, NEW YORK			
MECH. DES.	DATE	COVER TOP & BOTTOM			
ELECT. DES.	DATE				
CHECKED	DATE				
DRAWN	DATE	SIZE	CODE IDENT. NO.	DWG NO.	ISSUE
<i>[Signature]</i>	5/21/73	C	82679	MS6450	A
MATERIAL .051 ALUM.		SCALE 1/2		SHEET OF	
5052 H32					
FINISH S404					
YEL. IRIDITE					

- UNLESS OTHERWISE SPECIFIED:
- USE MATERIAL THICKNESS FOR MAXIMUM RADIUS ON ALL BENDS.
 - ALL ANGULAR BENDS 90 DEGREES.
 - REMOVE ALL BURRS AND SHARP EDGES.
 - MOUNT INSERTS AFTER FINISHING.

MARK TMC PART NUMBER
 1/8 HIGH GOTHIC WITH LATEST
 REVISION LETTER ON REAR OF PANEL

QTY / UNIT	MODEL USED ON	ASS'Y NO.
	ATSA-3	
APPLICATION		
	CODE	
NOTICE TO PERSONS RECEIVING THIS DRAWING		
THE TECHNICAL MATERIEL CORPORATION claims proprietary right in the material disclosed herein. This drawing is issued in confidence for engineering information only and may not be reproduced or used to manufacture anything shown herein without permission from THE TECHNICAL MATERIEL CORPORATION to the user. This drawing is loaned for mutual assistance and is subject to recall at any time.		