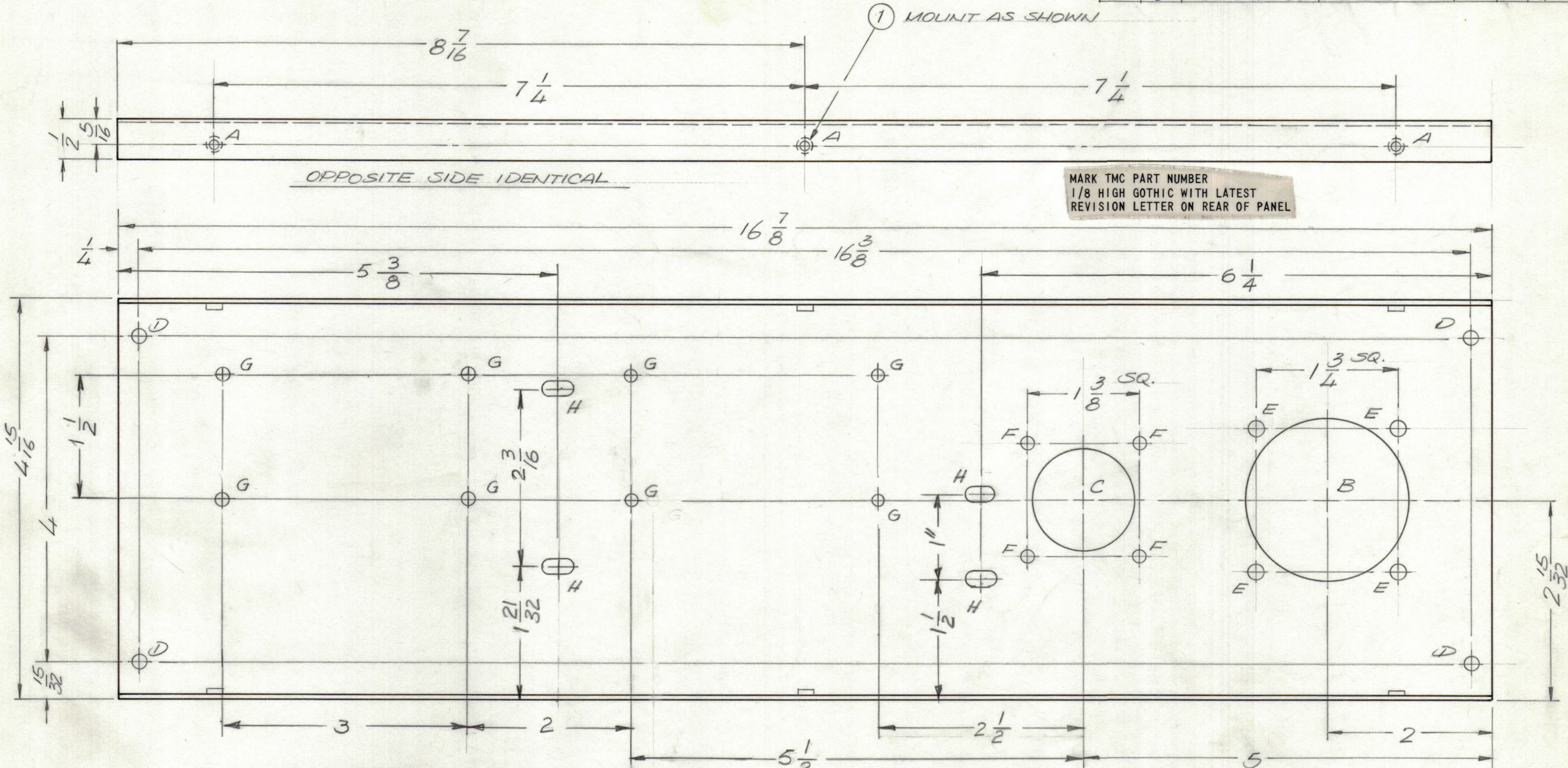


REVISIONS						
ZONE	LTR	DESCRIPTION	DATE	E.M.N.NO	DRAFT	CHKD
	Ø	ORIGINAL RELEASE FOR PRODUCTION	11/8/73		DV	
	A	TWO "G" HOLES ADD	4-28-76	21362	GDL	Q. Q.
	B	ADD 6 "G" HOLES & 4 "H" HOLES	4-20-77	21517	GDL	JTB KP



HOLE DESCRIPTION REQ.

- A — .191-.194 DIA. — 6
- B — 2 1/16 DIA. — 1
- C — 1 9/16 DIA. — 1
- D — 11/64 DIA. — 4
- E — 3/16 DIA. — 4
- F — 5/32 DIA. — 4
- G — 9/64 DIA. — 8
- H — 3/16 X 3/8 SLOT 4

UNLESS OTHERWISE SPECIFIED:

- USE MATERIAL THICKNESS FOR MAXIMUM RADIUS ON ALL BENDS.
- ALL ANGULAR BENDS 90 DEGREES.
- REMOVE ALL BURRS AND SHARP EDGES.
- MOUNT INSERTS AFTER FINISHING.

1 ATSA-3		
QTY / UNIT	MODEL USED ON	ASS'Y NO.
APPLICATION		
CODE		
NOTICE TO PERSONS RECEIVING THIS DRAWING		
THE TECHNICAL MATERIEL CORPORATION claims proprietary right in the material disclosed hereon. This drawing is issued in confidence for engineering information only and may not be reproduced or used to manufacture anything shown hereon without permission from THE TECHNICAL MATERIEL CORPORATION to the user. This drawing is loaned for mutual assistance and is subject to recall at any time.		

REF. LD 2544

UNLESS OTHERWISE SPECIFIED DIMENSIONS ARE IN INCHES AND INCLUDE CHEMICALLY APPLIED OR PLATED FINISHES

TOLERANCES ON

DECIMALS	FRACTIONS
.X ± .05	± 1/64
.XX ± .01	ANGLES
.XXX ± .005	± 0° -30'

MATERIAL .064 ALUM.
5052 H32

FINISH SH04
VEL. IRIDITE

6	1	NT1290632-4	NUT ROUND, SWAGE TYPE	
QTY. REQ.	ITEM	PART NO.	DESCRIPTION	SYMBOL
F. BUDETTI LIST OF MATERIAL				
FINAL APPROVAL		DATE		
MECH. DES.		DATE		
ELECT. DES.		DATE		
CHECKED		DATE		
DRAWN		DATE		
THE TECHNICAL MATERIEL CORP. MAMARONECK, NEW YORK				
PANEL, REAR				
SIZE	CODE IDENT.NO.	DWG NO.	ISSUE	
C	82679	MS6448	B	
SCALE 1:1			SHEET	OF

MS6448 B