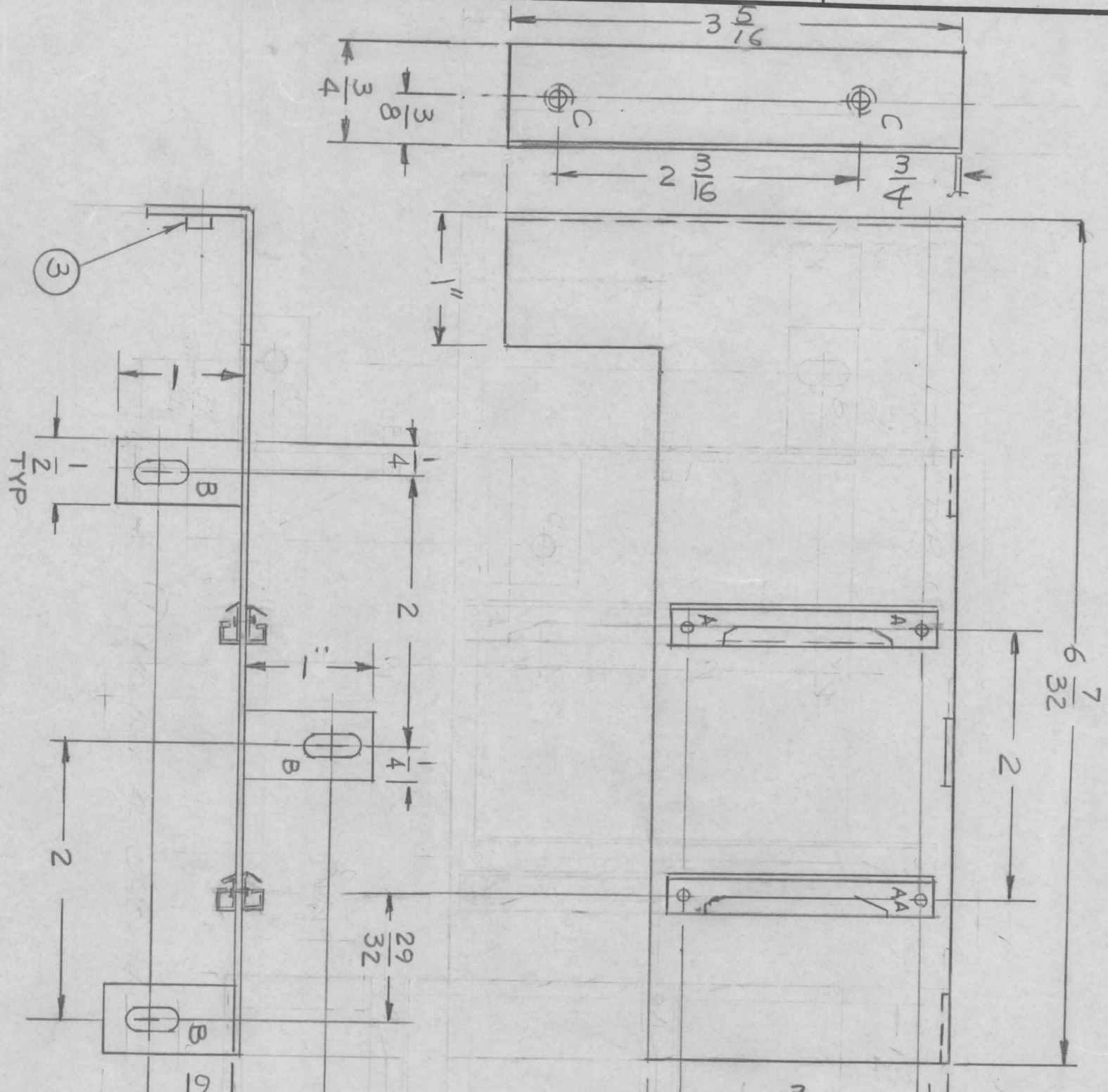


EM.N. NO.	DRAFT	CHKD	ZONE	LTR	DESCRIPTION	DATE	APPROVED
	DV				ORIGINAL RELEASE FOR PRODUCTION	11/30/73	K.P.
21516	GDL		A		REVISED & UPDATED	2.15.77	GDL
21633	C.D.L.		B		REVISED & UPDATED	3.3.77	GDL

HOLE DESCRIPTION REQ.

A — .067 DIA. — 4
 B — 1/64 X 3/8 SLOT — 3
 C — .191 - .194 DIA — 2



UNLESS OTHERWISE SPECIFIED:

1. USE MATERIAL THICKNESS FOR MAXIMUM RADIUS ON ALL BENDS.
2. ALL ANGULAR BENDS 90 DEGREES.
3. REMOVE ALL BURRS AND SHARP EDGES.
4. MOUNT INSERTS AFTER FINISHING.

QTY / UNIT	1	MODEL USED ON	ATSA-3	ASSY NO.	
APPLICATION		CODE			

NOTICE TO PERSONS RECEIVING THIS DRAWING
 THE TECHNICAL MATERIEL CORPORATION claims proprietary right in the material disclosed hereon. This drawing is issued in confidence for engineering information only and may not be reproduced or used to manufacture anything shown hereon without permission from THE TECHNICAL MATERIEL CORPORATION to the user. This drawing is loaned for mutual assistance and is subject to recall at any time.

DECIMALS	TOLS.	FRACTIONS	ANGLES
.X ± .05	.XX ± .01	1/64	° 30'
.XXX ± .005			

UNLESS OTHERWISE SPECIFIED DIMENSIONS ARE IN INCHES AND INCLUDE CHEMICALLY APPLIED OR PLATED FINISHES

FINISH S404
 VEL. IRIDITE

REQ'D ITEM	PART NUMBER	DESCRIPTION	SYM.
2	NT129-0632-4	NUT, ROUND	
4	EY100-4	RIVET	
4	CU157-2	RETAINER P.C. BD.	A

FINAL APPROVAL: *F. BUDETTI* DATE: 11/16/73

MECH. DES. DATE: 11/16/73

ELECT. DES. DATE: 11/16/73

CHECKED: *CE* DATE: 11/16/73

DRAWN: *CE* DATE: 5/22/74

SIZE	CODE IDENT. NO.	DWG NO.	ISSUE
B	82679	MS6444	B

SCALE 1:1

SHEET 1 OF 5

THE TECHNICAL MATERIEL CORP.
 MAMARONECK, NEW YORK

P.C. BOARD CENTER
 INSERT BRACKET