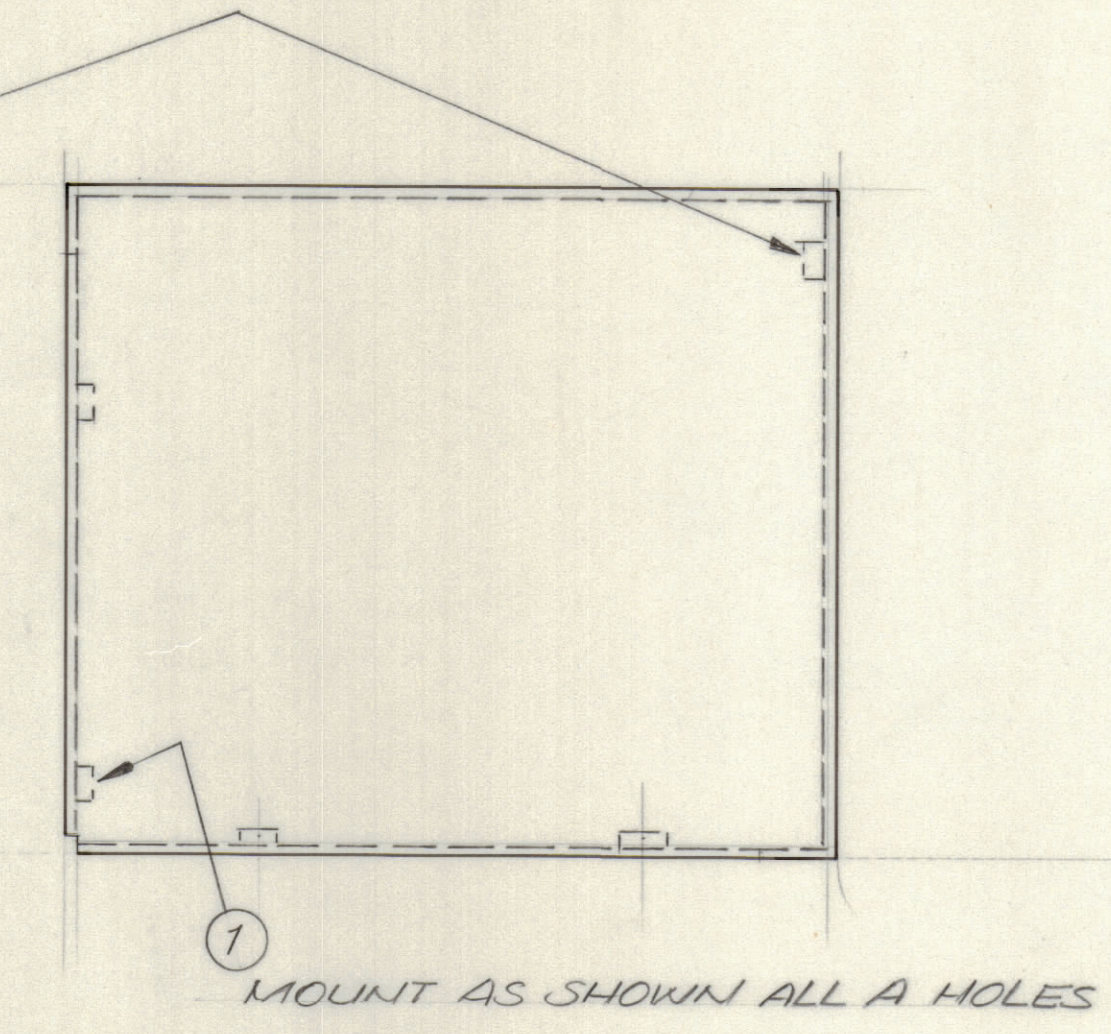
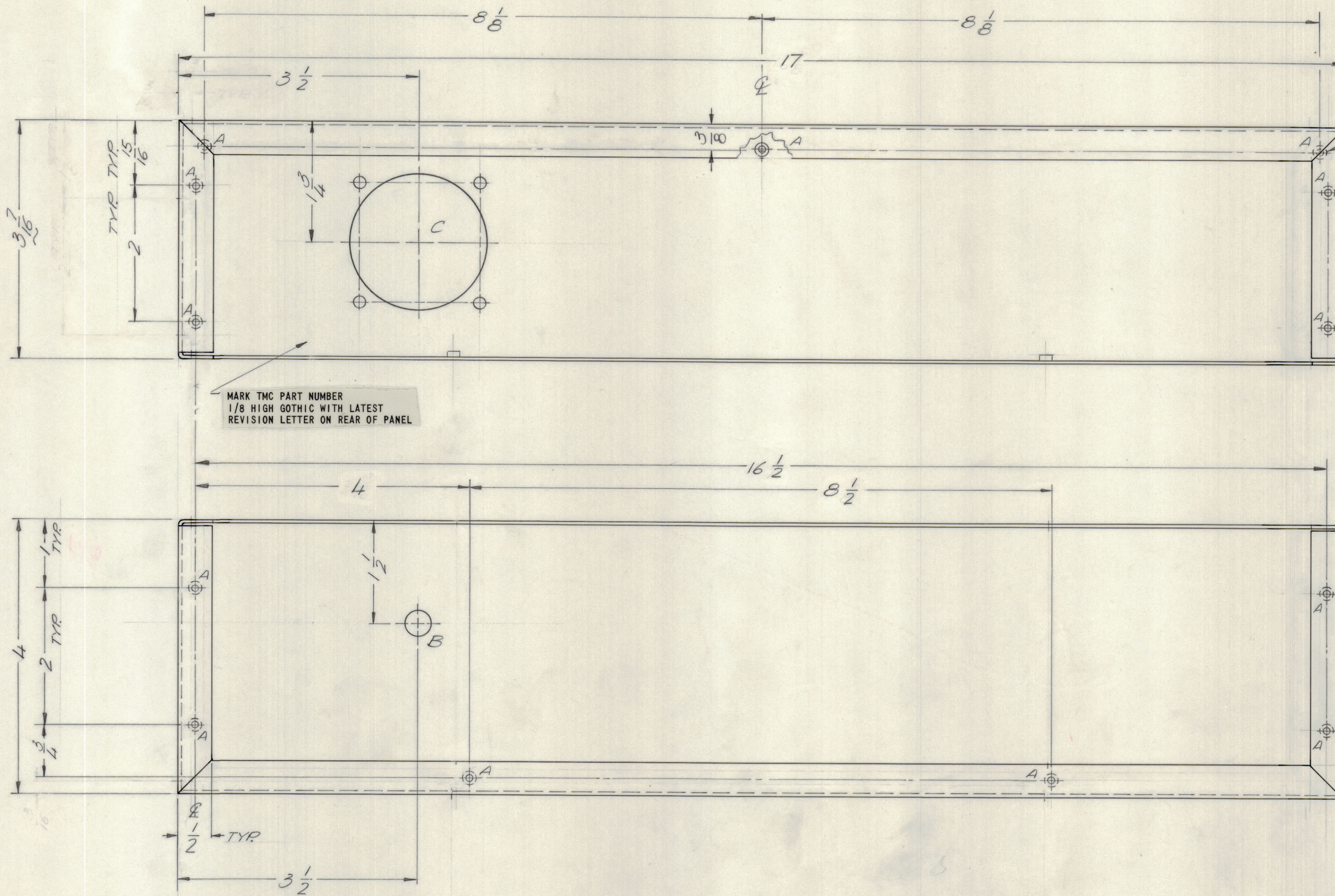
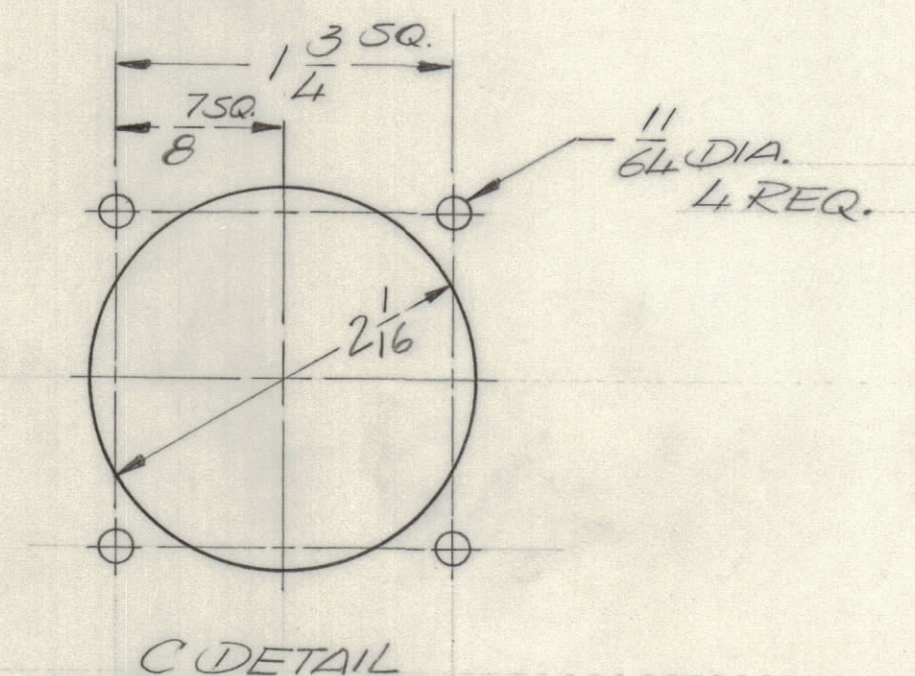


REVISIONS							
E.M.N.O.	DRAFT	CHKD	ZONE	LTR	DESCRIPTION	DATE	APPROVED
				X1	ADD ONE B ONE C HOLE	2/27/73	
				B	ORIGINAL RELEASE FOR PRODUCTION	3/29/73	



HOLE DESCRIPTION REQ.
 A — .191-.194 — 13
 B — 3/8 DIA. — 1
 C — SEE DETAIL — 1



QTY. REQ.	ITEM	PART NO.	DESCRIPTION	SYMBOL
13	1	NT1290632-4	NUT PLN ROUND	A

F. BUDETTI		LIST OF MATERIAL	
FINAL APPROVAL	DATE	THE TECHNICAL MATERIEL CORP.	
MECH. DES.	28 MAR 73	MAMARONECK, NEW YORK	
ELECT. DES.	DATE	CHASSIS, WRAPAROUND	
CHECKED	DATE		
DRAWN	2-6-73		

1 KIT 392		
QTY / UNIT	MODEL USED ON	ASSY NO.
	APPLICATION	
	CODE	
<small>NOTICE TO PERSONS RECEIVING THIS DRAWING</small> <small>THE TECHNICAL MATERIEL CORPORATION claims proprietary right in the material disclosed hereon. This drawing is issued in confidence for engineering information only and may not be reproduced or used to manufacture anything shown hereon without permission from THE TECHNICAL MATERIEL CORPORATION to the user. This drawing is loaned for mutual assistance and is subject to recall at any time.</small>		

- UNLESS OTHERWISE SPECIFIED:
- USE MATERIAL THICKNESS FOR MAXIMUM RADIUS ON ALL BENDS.
 - ALL ANGULAR BENDS 90 DEGREES.
 - REMOVE ALL BURRS AND SHARP EDGES.
 - MOUNT INSERTS AFTER FINISHING.

UNLESS OTHERWISE SPECIFIED DIMENSIONS ARE IN INCHES AND INCLUDE CHEMICALLY APPLIED OR PLATED FINISHES		TOLERANCES ON	
DECIMALS	FRACTIONS	DECIMALS	FRACTIONS
XX ± .05	± 1/64	XX ± .01	ANGLES
XXX ± .005	± 0°-30'	XXX ± .005	
MATERIAL .064 ALUM. 5052 H32		FINISH SH04 YEL. IRIDITE	

SIZE	CODE	IDENT NO.	DWG NO.	ISSUE
D	82679		MS6442	1
SCALE		SHEET	OF	