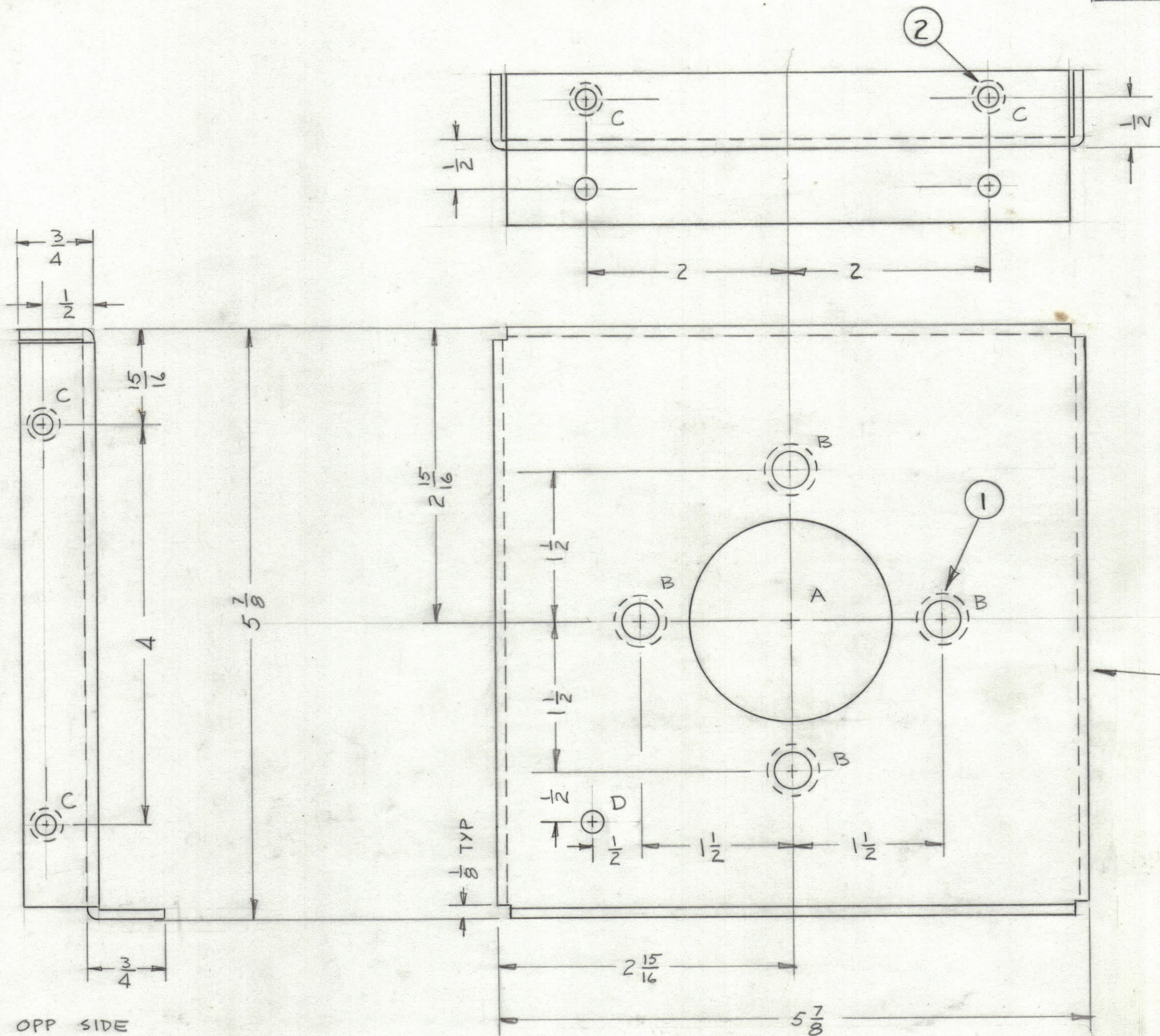


REVISIONS						
ZONE	LTR	DESCRIPTION	DATE	E.M.N.NO	DRAFT	CHKD APPD
	Ø	ORIGINAL RELEASE FOR PRODUCTION	1/3/73		CL	



- A ~ 2" DIA. 1 REQ'D
- B ~ .344-.347 DIA 4 REQ'D
- C ~ .191-.194 DIA 6 REQ'D
- D ~ 13/64 DIA 3 REQ'D

MARK TMC PART NUMBER
1/8 HIGH GOTHIC WITH LATEST
REVISION LETTER

- UNLESS OTHERWISE SPECIFIED:
1. USE MATERIAL THICKNESS FOR MAXIMUM RADIUS ON ALL BENDS.
 2. ALL ANGULAR BENDS 90 DEGREES.
 3. REMOVE ALL BURRS AND SHARP EDGES.
 4. MOUNT INSERTS AFTER FINISHING.

QTY. REQ.	ITEM	PART NO.	DESCRIPTION	SYMBOL
6	Z	NT129-0632-4	NUT, SWAGE	C
4	1	NT129-2520-4	NUT, SWAGE	B

LIST OF MATERIAL

THE TECHNICAL MATERIEL CORP.
MAMARONECK, NEW YORK

BRKT, FLANGE MTG.

1	TRCP-1	LP221
QTY / UNIT	MODEL USED ON	ASS'Y NO.
APPLICATION		
	CODE	

NOTICE TO PERSONS RECEIVING THIS DRAWING
THE TECHNICAL MATERIEL CORPORATION claims proprietary right in the material disclosed hereon. This drawing is issued in confidence for engineering information only and may not be reproduced or used to manufacture anything shown hereon without permission from THE TECHNICAL MATERIEL CORPORATION to the user. This drawing is loaned for mutual assistance and is subject to recall at any time.

UNLESS OTHERWISE SPECIFIED DIMENSIONS ARE IN INCHES AND INCLUDE CHEMICALLY APPLIED OR PLATED FINISHES

TOLERANCES ON

DECIMALS	FRACTIONS
.X ± .05	± 1/64
.XX ± .01	ANGLES
.XXX ± .005	± 0° -30'

MATERIAL .081 ALUM
5052-H32

FINISH
S404 YEL IRID

FINAL APPROVAL	DATE
<i>[Signature]</i>	28 DEC 72
MECH. DES.	DATE
<i>[Signature]</i>	28 DEC 72
ELECT. DES.	DATE
CHECKED	DATE
<i>[Signature]</i>	28 DEC 72
DRAWN	DATE
<i>[Signature]</i>	27 DEC 72

SIZE	CODE IDENT.NO.	DWG NO.	ISSUE
C	82679	MSG420	Ø
SCALE		SHEET	OF
		1	