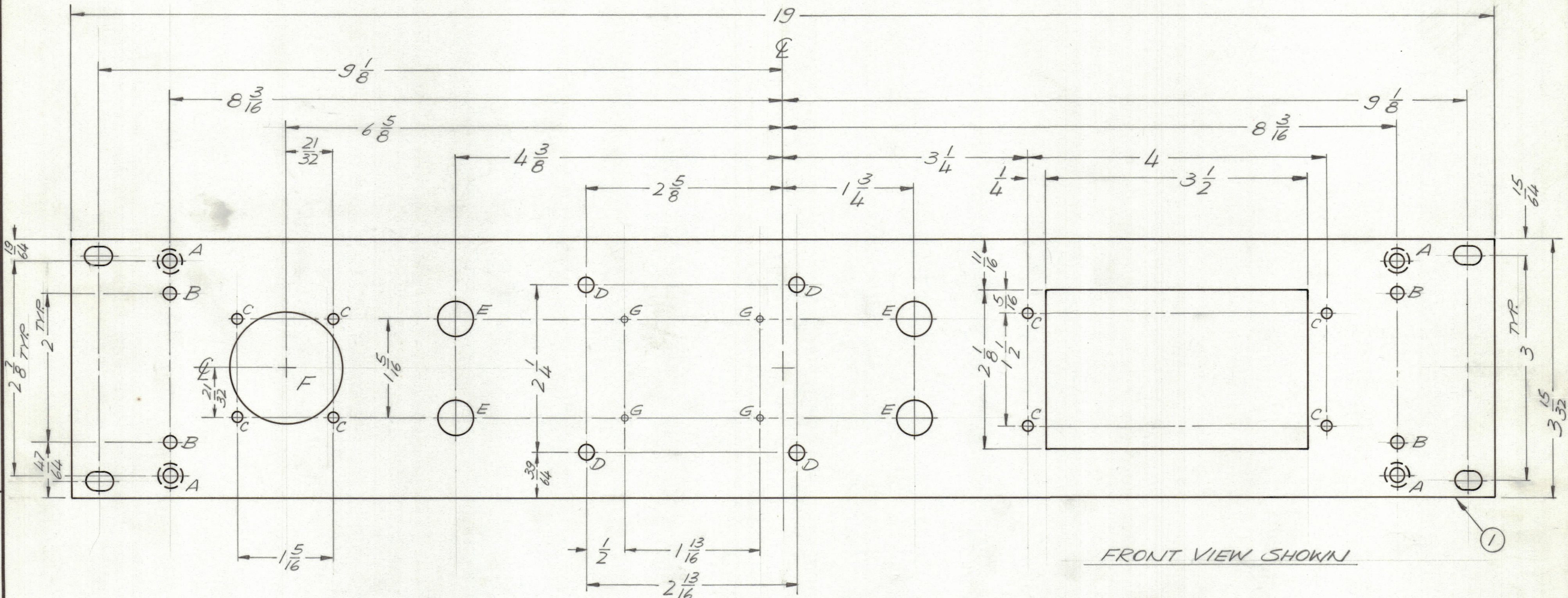


REVISIONS						
ZONE	LTR	DESCRIPTION	DATE	E.M.N.NO	DRAFT	CHKD APPD
	Ø	ORIGINAL RELEASE FOR PRODUCTION	11/21/72		ES	
	A	CHG. DIM. ON CUTOUT FROM 3 1/2 TO 3 15/16	10/18/72	21470		K.P.K.P.



FRONT VIEW SHOWN

HOLE DESCRIPTION REQ.

- A — 1032 C'SNK (82°) — 4
- B — 11/64 DIA. — 4
- C — 9/64 DIA. — 8
- D — 13/64 DIA. — 4
- E — 15/32 DIA. — 4
- F — 1 9/16 DIA. — 1
- G — .070 DIA. — 4

FINISH NOTES:
 1. S404 - IRIDITE 14-2 AL-COAT.
 2. S114 - ZINC CHROMATE PRIMER } FRONT AND
 3. S115 - SMOOTH GRAY ENAMEL } EDGES ONLY
 OR
 PRIME AND PAINT PER CUSTOMER'S SPECIFICATIONS

REF. LD 2522

1	RSU-1	
QTY / UNIT	MODEL USED ON	ASS'Y NO.
APPLICATION		
CODE		
NOTICE TO PERSONS RECEIVING THIS DRAWING		
THE TECHNICAL MATERIEL CORPORATION claims proprietary right in the material disclosed hereon. This drawing is issued in confidence for engineering information only and may not be reproduced or used to manufacture anything shown hereon without permission from THE TECHNICAL MATERIEL CORPORATION to the user. This drawing is loaned for mutual assistance and is subject to recall at any time.		

UNLESS OTHERWISE SPECIFIED DIMENSIONS ARE IN INCHES AND INCLUDE CHEMICALLY APPLIED OR PLATED FINISHES

TOLERANCES ON

DECIMALS	FRACTIONS
.X ± .05	± 1/64
.XX ± .01	ANGLES
.XXX ± .005	± 0° -30'

MATERIAL 3/16 THK. ALUM 2024-T3

FINISH AS NOTED

1	1	MS157-2H	PANEL, BLANK	
QTY. REQ.	ITEM	PART NO.	DESCRIPTION	SYMBOL
0.	POSE		LIST OF MATERIAL	
FINAL APPROVAL		DATE	THE TECHNICAL MATERIEL CORP.	
<i>[Signature]</i>		11/20/72	MAMARONECK, NEW YORK	
MECH. DES.		DATE	PANEL, FRONT	
ALP				
ELECT. DES.		DATE		
CHECKED		DATE		
DRAWN		DATE		
G. EVANGELIST		9/25/72		
SIZE	CODE IDENT. NO.	DWG NO.	ISSUE	
C	82679	MS6398	A	
SCALE 1:1			SHEET	OF

MS6398