

APPLICATION

QTY 1

MODEL USED ON KIT 375

LTR

ASSY NO.

DESCRIPTION

ORIG RELEASE FOR PROD 1/29/73  
A ADD OBSOLETE NOTE 4/17/73 210566 GE EJ

REVISIONS

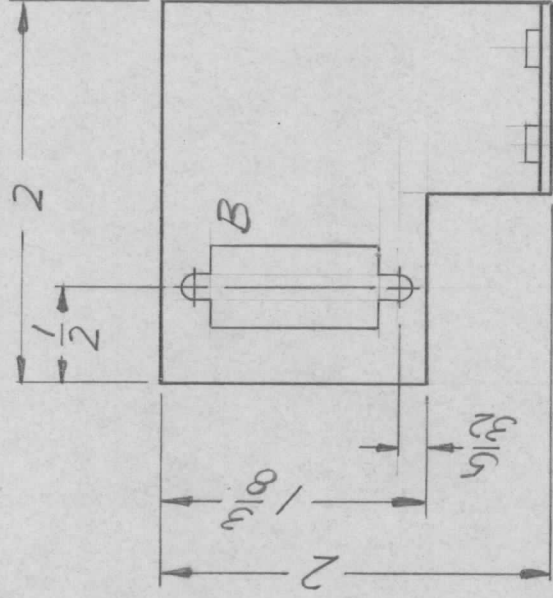
DATE

E.M.N.NO

DRAFT

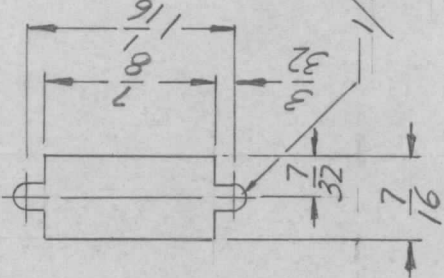
CHKD

APPD



1 MT. AS SHOWN

B DETAIL



A HOLE - .161 - .164 DIA. - 2 REQ.  
B - SEE DETAIL - 1 REQ.

**OBSOLETE**

1/8 DIA. (2 PLACES)  
REF. LD 2526

REQ'D ITEM	PART NUMBER	DESCRIPTION	SYM.
2 1	NT129-0440-3	NUT ROUND, SWAGE TYPE	A
LIST OF MATERIAL			
O. POSE			
FINAL APPROVAL	DATE	THE TECHNICAL MATERIEL CORP.	
Mech. Des.	DATE	MAMARONECK, NEW YORK	
ELECT. DES.	DATE	BRKT. RELAY MTG.	
CHECKED	DATE		
DRAWN	DATE		
MATERIAL: 051 ALUM 5052 H32		SIZE A	
FINISH S40H YELLOW IRIDITE		CODE IDENT. NO. MS6390	
		DWG NO. MS6390	
		ISSUE A	
		SCALE 1:1	
		SHEET OF	

NOTICE TO PERSONS RECEIVING THIS DRAWING  
THE TECHNICAL MATERIEL CORPORATION claims proprietary right in the material disclosed hereon. This drawing is issued in confidence for engineering information only and may not be reproduced or used to manufacture anything shown hereon without permission from THE TECHNICAL MATERIEL CORPORATION to the user. This drawing is loaned for mutual assistance and is subject to recall at any time.