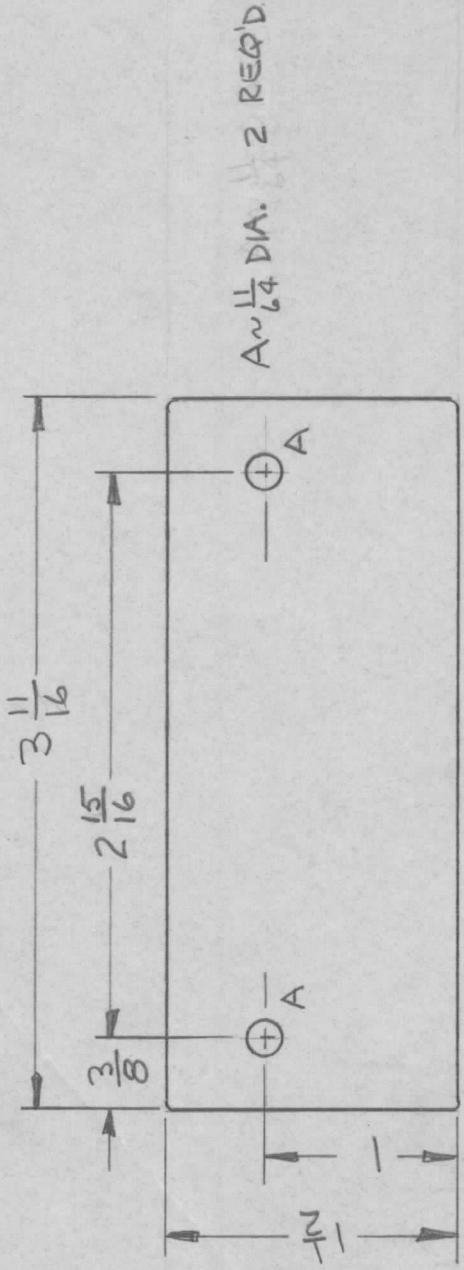


REVISIONS

APPLICATION

QTY	MODEL USED ON	ASS'Y NO.	LTR	DESCRIPTION	DATE	E.M.N.NO	DRAFT	CHKD	APPD
1	HFL()-10K	AX5165	Ø	ORIGINAL RELEASE	8/3/72		<i>d.</i>		



FINISH NOTES:

1. S404 - IRIDITE 14-2 AL-COAT.
2. S114 - ZINC CHROMATE PRIMER
3. S115 - SMOOTH GRAY ENAMEL

OR  
PRIME AND PAINT PER CUSTOMER'S SPECIFICATIONS

REQ'D	ITEM	PART NUMBER	DESCRIPTION	SYM.
LIST OF MATERIAL				
<b>THE TECHNICAL MATERIEL CORP.</b> MAMARONECK, NEW YORK				
FINAL APPROVAL	<i>JM</i>	DATE	11 Aug 72	
MECH. DES.	<i>JM</i>	DATE	11 Aug 72	
ELECT. DES.		DATE		
CHECKED		DATE		
DRAWN	<i>JM</i>	DATE	25 JUL 72	
UNLESS OTHERWISE SPECIFIED DIMENSIONS ARE IN INCHES AND INCLUDE CHEMICALLY APPLIED OR PLATED FINISHES				
DECIMALS FRACTIONS				
.X ± .05 TOLS. 1/64				
.XX ± .01 ANGLES 0° - 30'				
.XXX ± .005				
MATERIAL 064 ALUM				
5052-H32				
FINISH				
SEE NOTES				
SIZE	CODE IDENT. NO.	DWG NO.	ISSUE	
A	82679	MS6371	Ø	
SCALE		SHEET	OF	

PLATE, COVER, MTR

NOTICE TO PERSONS RECEIVING THIS DRAWING  
THE TECHNICAL MATERIEL CORPORATION claims proprietary right in the material disclosed hereon. This drawing is issued in confidence for engineering information only and may not be reproduced or used to manufacture anything shown hereon without permission from THE TECHNICAL MATERIEL CORPORATION to the user. This drawing is loaned for mutual assistance and is subject to recall at any time.