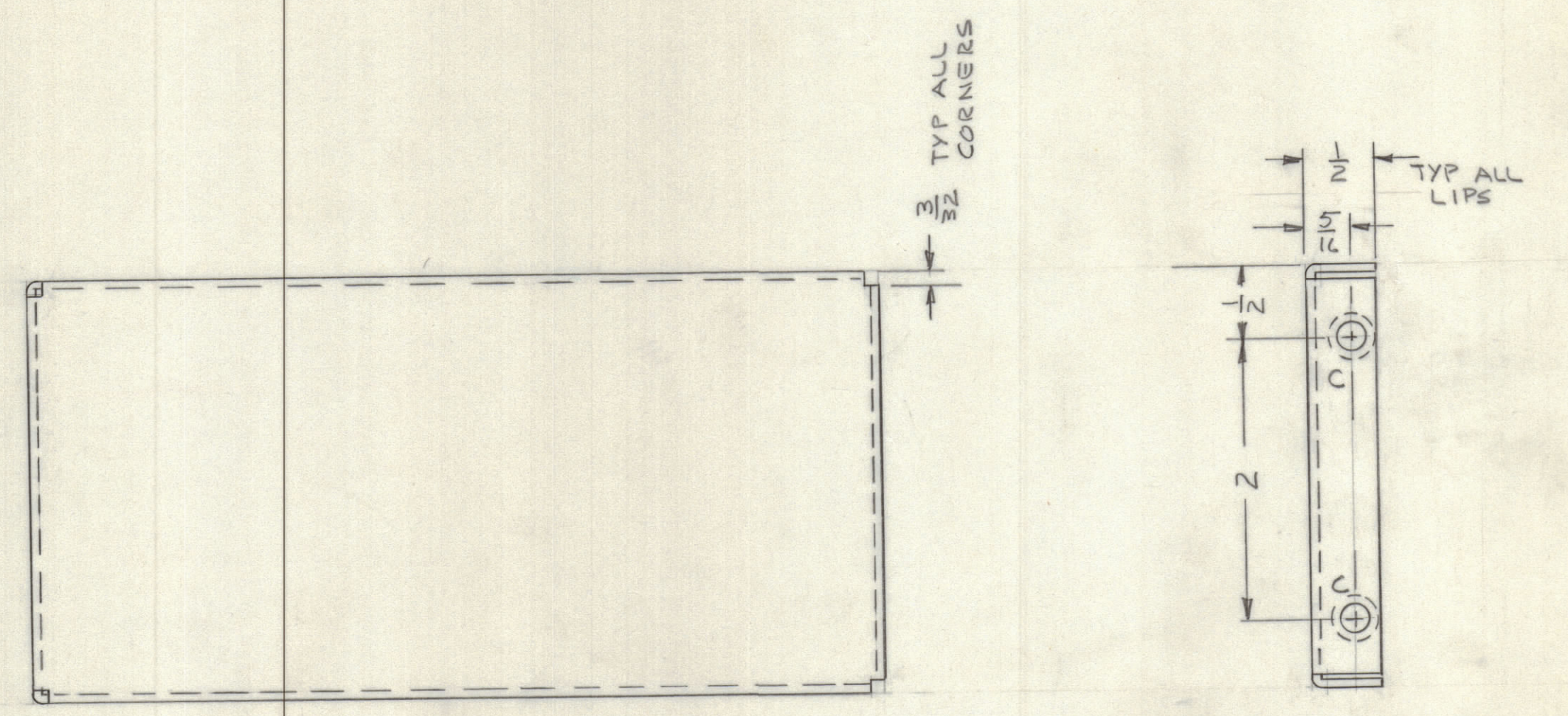
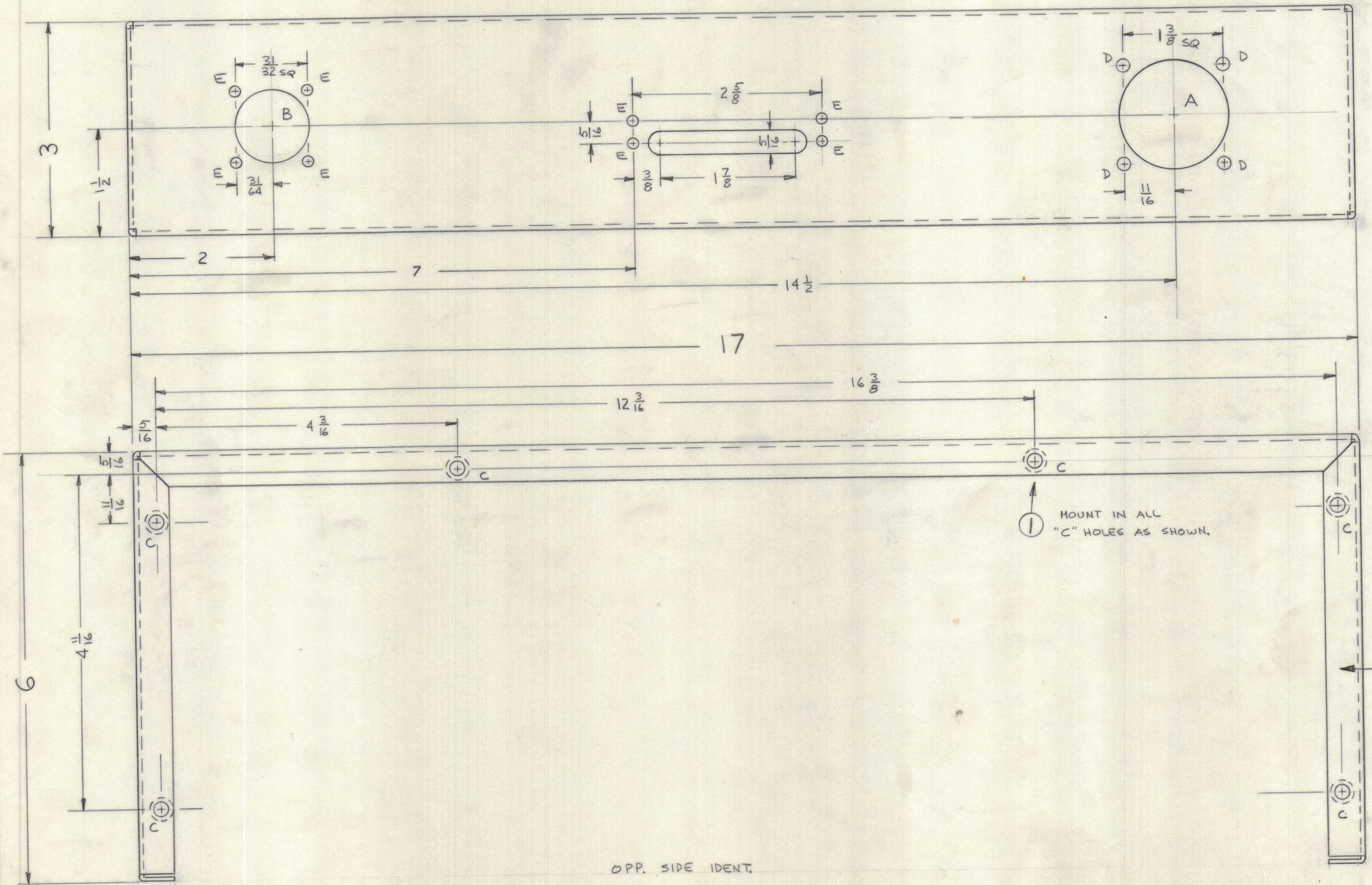


REVISIONS						
E.M.N.NO	DRAFT	CHKD	ZONE	LTR	DATE	
	Ej			P	5-30-72	
DESCRIPTION					DATE	APPROVED
ORIGINAL RELEASE FOR PRODUCTION						



- A ~ $1 \frac{9}{16}$ DIA. 1 REQ'D
- B ~ $1 \frac{1}{16}$ DIA. 1 REQ'D
- C ~ .191-.194 DIA. 16 REQ'D
- D ~ $\frac{11}{64}$ DIA. 4 REQ'D
- E ~ $\frac{9}{64}$ DIA. 8 REQ'D

MARK TMC PART NUMBER
1/8 HIGH GOTHIC WITH LATEST
REVISION LETTER

- UNLESS OTHERWISE SPECIFIED:
- USE MATERIAL THICKNESS FOR MAXIMUM RADIUS ON ALL BENDS.
 - ALL ANGULAR BENDS 90 DEGREES.
 - REMOVE ALL BURRS AND SHARP EDGES.
 - MOUNT INSERTS AFTER FINISHING.

REF: LD2517

QTY. REQ.	ITEM	PART NO.	DESCRIPTION	SYMBOL
16	1	NT123-0632-4	NUT, SWAGE	C

LIST OF MATERIAL			
FINAL APPROVAL	DATE	THE TECHNICAL MATERIEL CORP. MAMARONECK, NEW YORK CHASSIS CONTROL UNIT	
MECH. DES.	DATE		
ELECT. DES.	DATE		
CHECKED	DATE		
DRAWN	DATE		
UNLESS OTHERWISE SPECIFIED DIMENSIONS ARE IN INCHES AND INCLUDE CHEMICALLY APPLIED OR PLATED FINISHES		MATERIAL .064 ALUM 5052-H32	
TOLERANCES ON DECIMALS X ± .05 XX ± .01 XXX ± .005		FINISH S404 YEL IRD	
QTY / UNIT MODEL USED ON APPLICATION CODE		SIZE CODE IDENT NO DWG NO. ISSUE D 82679 MS6359 Ø	
NOTICE TO PERSONS RECEIVING THIS DRAWING THE TECHNICAL MATERIEL CORPORATION claims proprietary right in the material disclosed hereon. This drawing is issued in confidence for engineering information only and may not be reproduced or used to manufacture anything shown hereon without permission from THE TECHNICAL MATERIEL CORPORATION to the user. This drawing is loaned for mutual assistance and is subject to recall at any time.		SCALE SHEET OF	

QTY / UNIT	MODEL USED ON	ASS'Y NO.
	MAT-5	AX5154
APPLICATION		
CODE		