

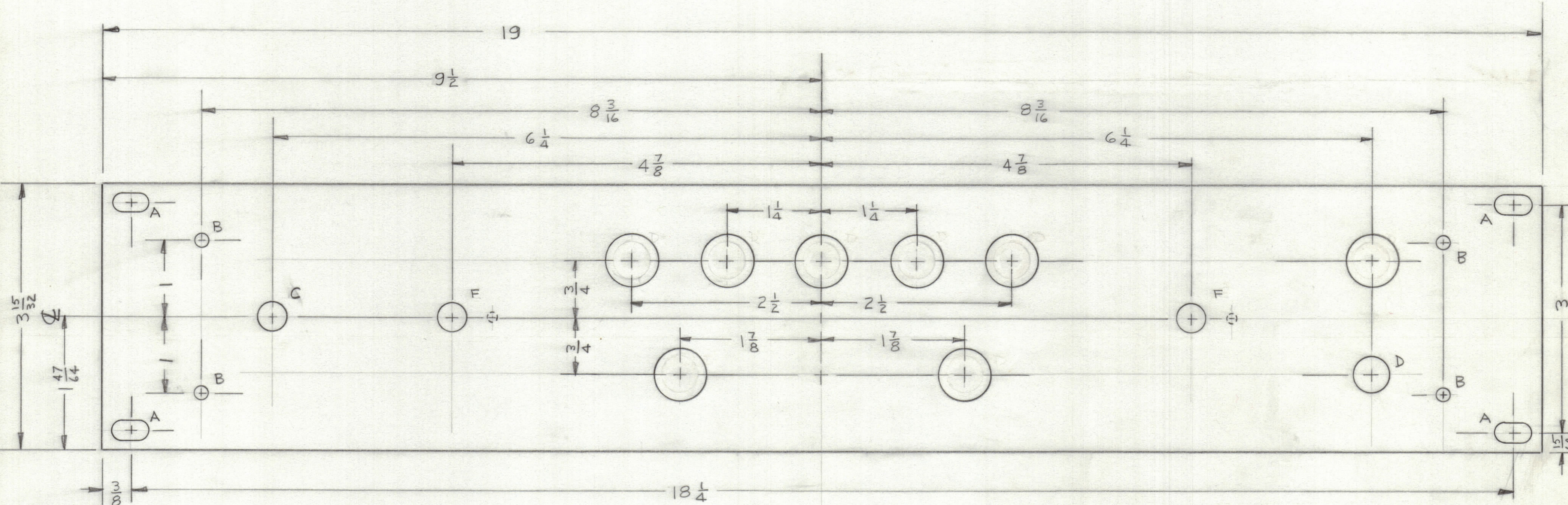
4

3

2

1

REVISIONS							
ZONE	LTR	DESCRIPTION	DATE	E.M.N.NO	DRAFT	CHKD	APPD
	Ø	ORIGINAL RELEASE FOR PRODUCTION	5-30-72		EG		



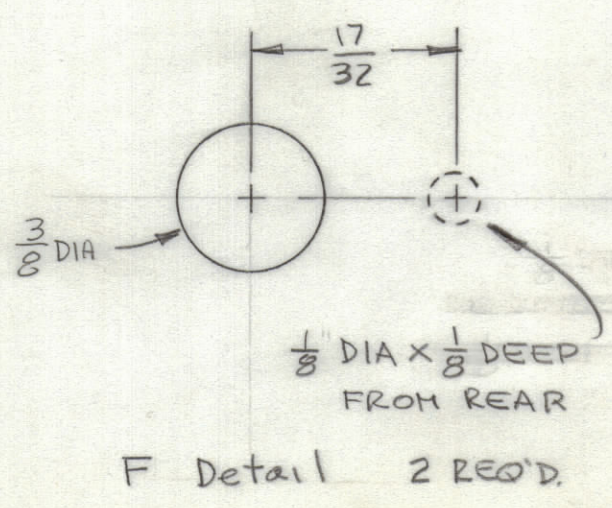
FRONT VIEW

- A ~ 1/4 x 29/64 SLOT 4 REQ'D.
- B ~ 1/64 DIA 4 REQ'D
- C ~ 3/8 DIA 1 REQ'D
- D ~ 15/32 DIA. 1 REQ'D
- E ~ 1/16 DIA DETAIL 8 REQ'D

FINISH NOTES:

- S404 - IRIDITE 14-2 AL-COAT.
- S114 - ZINC CHROMATE PRIMER } FRONT AND
- S115 - SMOOTH GRAY ENAMEL } EDGES ONLY

OR
PRIME AND PAINT PER CUSTOMER'S SPECIFICATIONS



1	MAT-5	AX5154
QTY / UNIT	MODEL USED ON	ASS'Y NO.
APPLICATION		
	CODE	
NOTICE TO PERSONS RECEIVING THIS DRAWING		
<small>THE TECHNICAL MATERIEL CORPORATION claims proprietary right in the material disclosed hereon. This drawing is issued in confidence for engineering information only and may not be reproduced or used to manufacture anything shown hereon without permission from THE TECHNICAL MATERIEL CORPORATION to the user. This drawing is loaned for mutual assistance and is subject to recall at any time.</small>		

REF: LD2516

QTY. REQ.	ITEM	PART NO.	DESCRIPTION	SYMBOL								
LIST OF MATERIAL												
THE TECHNICAL MATERIEL CORP. MAMARONECK, NEW YORK												
PANEL, FRONT												
FINAL APPROVAL <i>[Signature]</i>		DATE 24 May 72	<table border="1"> <tr> <td>SIZE</td> <td>CODE IDENT. NO.</td> <td>DWG NO.</td> <td>ISSUE</td> </tr> <tr> <td>C</td> <td>82679</td> <td>MS6358</td> <td>Ø</td> </tr> </table>		SIZE	CODE IDENT. NO.	DWG NO.	ISSUE	C	82679	MS6358	Ø
SIZE	CODE IDENT. NO.	DWG NO.			ISSUE							
C	82679	MS6358			Ø							
MECH. DES. <i>[Signature]</i>		DATE 24 May 72										
ELECT. DES.		DATE										
CHECKED <i>[Signature]</i>		DATE 24 May 72										
DRAWN <i>[Signature]</i>		DATE 26 APR 72										
MATERIAL 3/16 ALUM			SCALE									
2024-T3			SHEET OF									
FINISH												

4

3

2

1

MS6358