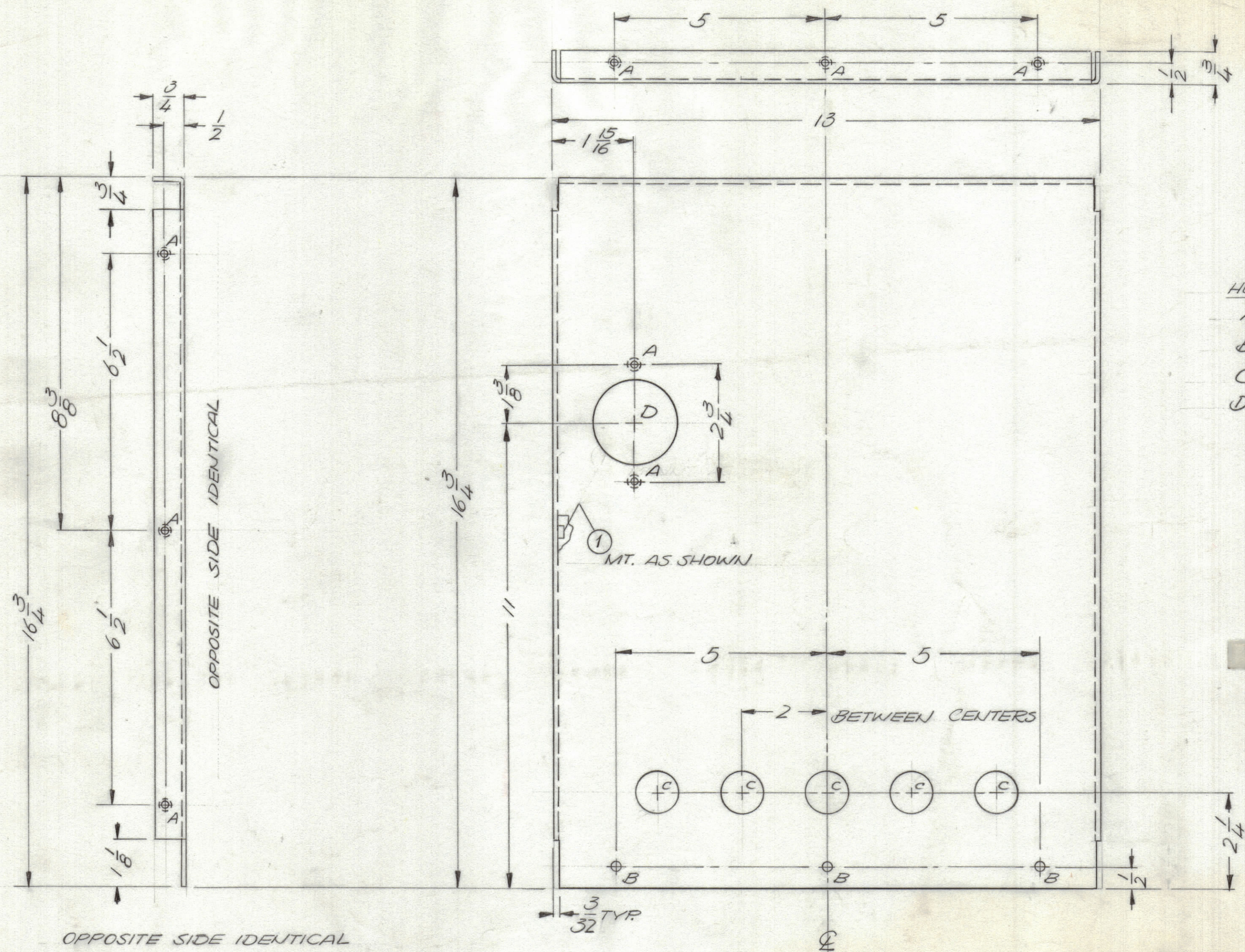


REVISIONS						
ZONE	LTR	DESCRIPTION	DATE	E.M.N.NO	DRAFT	CHKD APPD
	Ø	ORIGINAL RELEASE FOR PRODUCTION	3/23/73		CL	



HOLE DESCRIPTION REQ.

A - .251-.254 DIA. - 11

B - 1/4 DIA. - 3

C - 1" DIA - 5

D - 2" DIA - 1

FINISH NOTES:

- S404 - IRIDITE 14-2 AL-COAT.
- S114 - ZINC CHROMATE PRIMER
- S520 - BLUE GRAY } FRONT & EDGES ONLY

OR

PRIME AND PAINT PER CUSTOMER'S SPECIFICATIONS

MS 6347-1 - AS SHOWN - RIGHT SIDE

MS 6347-2 - MIRROR IMAGE - LEFT SIDE

FRONT VIEW SHOWN

QTY. REQ.	ITEM	PART NO.	DESCRIPTION	SYMBOL
9	11	NT129-1032-6	NUT, SPLINE	A

LIST OF MATERIAL			
FINAL APPROVAL		DATE	
MECH. DES.		DATE	
ELECT. DES.		DATE	
CHECKED		DATE	
DRAWN		DATE	
F.B.		THE TECHNICAL MATERIEL CORP.	
		MAMARONECK, NEW YORK	
SIDE, LEFT & RIGHT			

QTY / UNIT	MODEL USED ON	ASS'Y NO.
1 EACH	AX5143	
APPLICATION		
	CODE	
NOTICE TO PERSONS RECEIVING THIS DRAWING		
THE TECHNICAL MATERIEL CORPORATION claims proprietary right in the material disclosed herein. This drawing is issued in confidence for engineering information only and may not be reproduced or used to manufacture anything shown hereon without permission from THE TECHNICAL MATERIEL CORPORATION to the user. This drawing is loaned for mutual assistance and is subject to recall at any time.		

UNLESS OTHERWISE SPECIFIED DIMENSIONS ARE IN INCHES AND INCLUDE CHEMICALLY APPLIED OR PLATED FINISHES	
TOLERANCES ON	
DECIMALS	FRACTIONS
.X ± .05	± 1/64
.XX ± .01	ANGLES
.XXX ± .005	± 0° -30'
MATERIAL .064 ALUM	
5052 H32	
FINISH	
AS NOTED	

SIZE	CODE IDENT.NO.	DWG NO.	ISSUE
C	82679	MS 6347	Ø
SCALE			SHEET OF
1/2			

- UNLESS OTHERWISE SPECIFIED:
- USE MATERIAL THICKNESS FOR MAXIMUM RADIUS ON ALL BENDS.
 - ALL ANGULAR BENDS 90 DEGREES.
 - REMOVE ALL BURRS AND SHARP EDGES.
 - MOUNT INSERTS AFTER FINISHING.