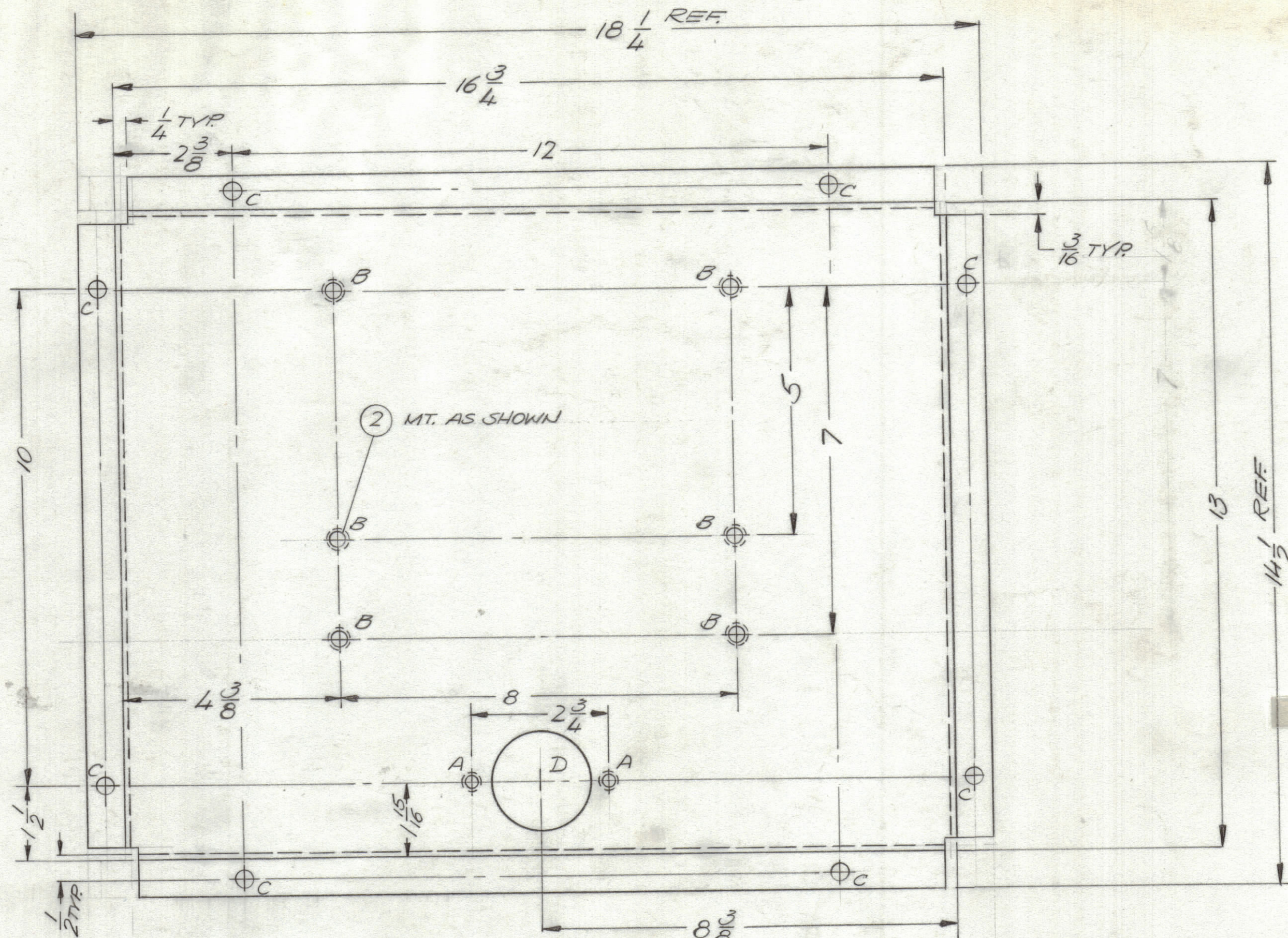


REVISIONS							
ZONE	LTR	DESCRIPTION	DATE	E.M.N.NO	DRAFT	CHKD	APPD
	Ø	ORIGINAL RELEASE FOR PRODUCTION	3/23/72			CL	



HOLE DESCRIPTION REQ.

A - .251-.254 D. - 14

B - .344-.347 D - 6

C - 5/16 D - 8

D - 2" D - 1

FINISH NOTES:

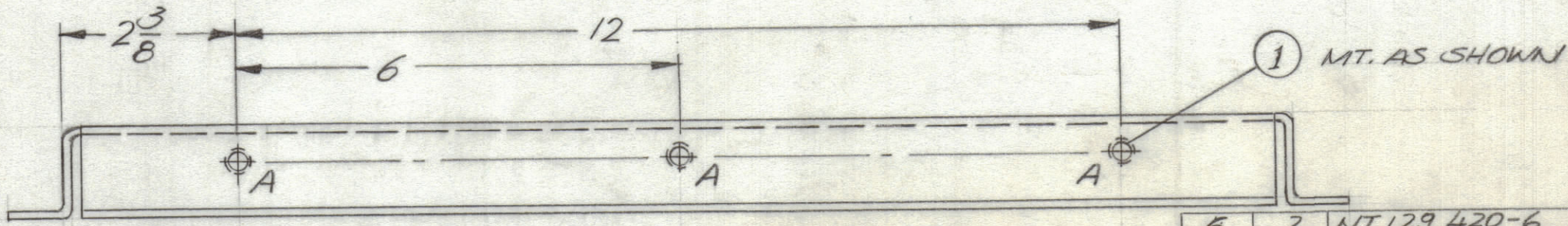
- S404 - IRIDITE 14-2 AL-COAT.
- S114 - ZINC CHROMATE PRIMER
- S520 - BLUE GRAY TOP & EDGES TEXTURED VINYL ONLY

OR

PRIME AND PAINT PER CUSTOMER'S SPECIFICATIONS



OPPOSITE SIDE IDENTICAL



OPPOSITE SIDE IDENTICAL

TOP VIEW SHOWN

- UNLESS OTHERWISE SPECIFIED:
- USE MATERIAL THICKNESS FOR MAXIMUM RADIUS ON ALL BENDS.
  - ALL ANGULAR BENDS 90 DEGREES.
  - REMOVE ALL BURRS AND SHARP EDGES.
  - MOUNT INSERTS AFTER FINISHING.

1	AX5143	
QTY / UNIT	MODEL USED ON	ASS'Y NO.
APPLICATION		
CODE		
NOTICE TO PERSONS RECEIVING THIS DRAWING		
THE TECHNICAL MATERIEL CORPORATION claims proprietary right in the material disclosed herein. This drawing is issued in confidence for engineering information only and may not be reproduced or used to manufacture anything shown hereon without permission from THE TECHNICAL MATERIEL CORPORATION to the user. This drawing is loaned for mutual assistance and is subject to recall at any time.		

UNLESS OTHERWISE SPECIFIED DIMENSIONS ARE IN INCHES AND INCLUDE CHEMICALLY APPLIED OR PLATED FINISHES

TOLERANCES ON

DECIMALS	FRACTIONS
.X ± .05	± 1/64
.XX ± .01	ANGLES
.XXX ± .005	± 0° .30'

MATERIAL 1/8 ALUM  
5052 H32

FINISH  
AS NOTED

QTY. REQ.	ITEM	PART NO.	DESCRIPTION	SYMBOL
6	2	NT 129 420-6	NUT SPLINE	B
12	1	NT 129 1032-6	NUT SPLINE	A

F.B. LIST OF MATERIAL

FINAL APPROVAL: *AL PETROCCA* DATE: 3/23/72

MECH. DES. DATE: 3-17-72

ELECT. DES. DATE:

CHECKED DATE:

DRAWN: *GE* DATE: 2/6/72

THE TECHNICAL MATERIEL CORP.  
MAMARONECK, NEW YORK

PLATE XFMR MTG.

SIZE	CODE IDENT.NO.	DWG NO.	ISSUE
C	82679	MS6346	Ø
SCALE 1/2	SHEET		OF