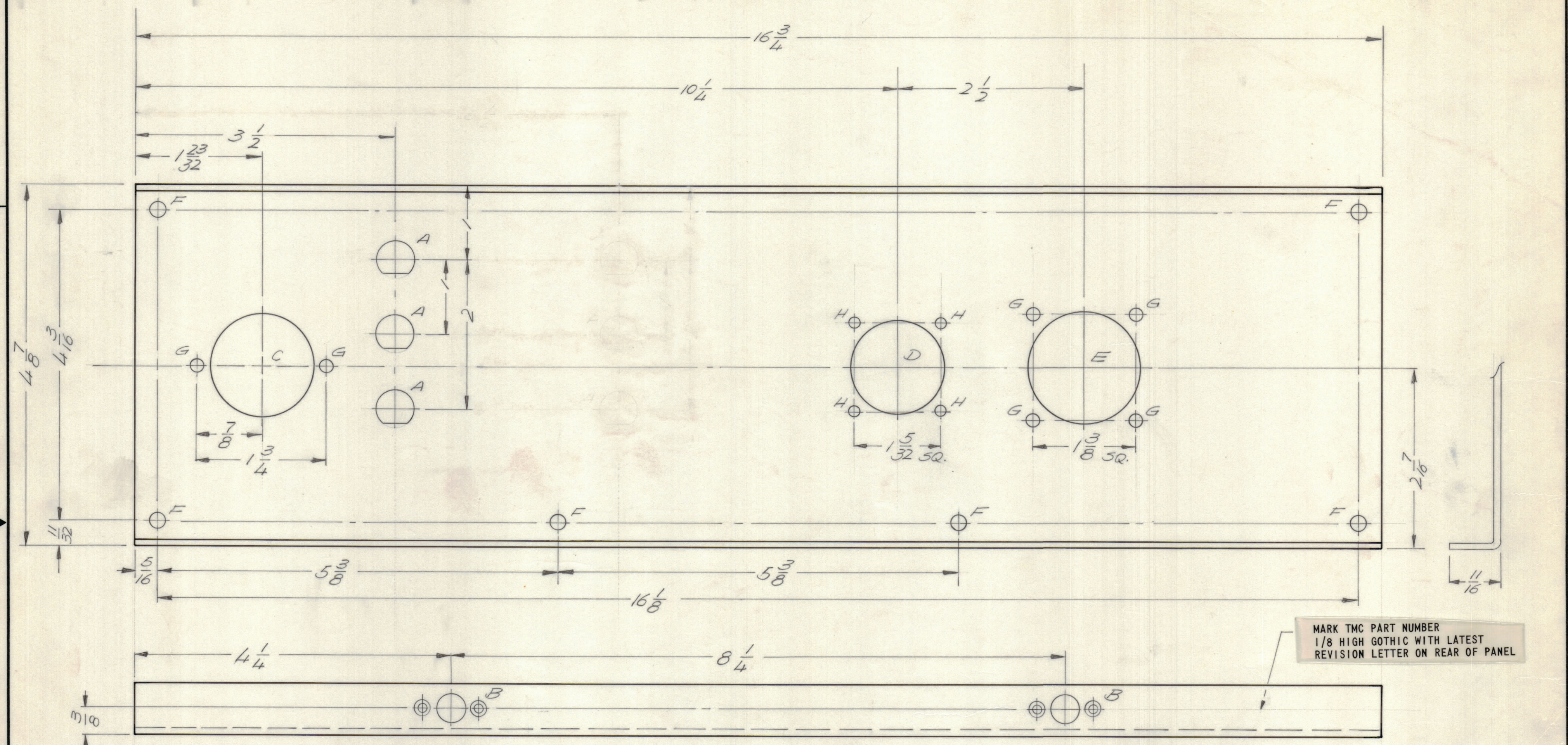


REVISIONS							
E.M.N.NO	DRAFT	CHKD	ZONE	LTR	DESCRIPTION	DATE	APPROVED
				8	ORIG. RELEASE FOR PROD.	11/71	

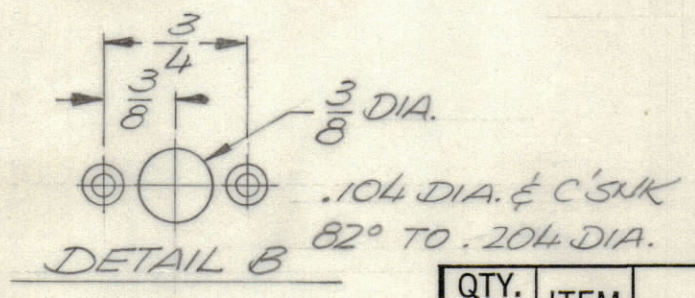
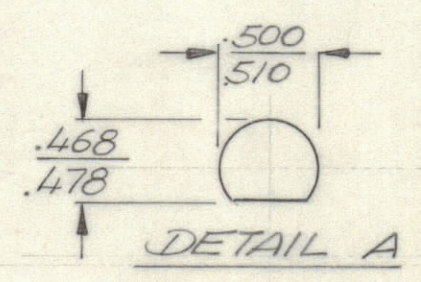


MARK TMC PART NUMBER  
1/8 HIGH GOTHIC WITH LATEST  
REVISION LETTER ON REAR OF PANEL

OPPOSITE SIDE IDENTICAL

HOLE DESCRIPTION REQ.

- A - SEE DETAIL - 3
- B - SEE DETAIL - 4
- C - 1 3/8 DIA - 1
- D - 1 1/4 DIA. - 1
- E - 1 1/2 DIA. - 1
- F - 13/64 DIA. - 6
- G - 11/64 DIA - 6
- H - 9/64 DIA. - 4



1	RTPR-1YA	AX5161
QTY / UNIT	MODEL USED ON	ASS'Y NO.
APPLICATION		
CODE		

NOTICE TO PERSONS RECEIVING THIS DRAWING  
THE TECHNICAL MATERIEL CORPORATION claims proprietary right in the material disclosed herein. This drawing is issued in confidence for engineering information only and may not be reproduced or used to manufacture anything shown hereon without permission from THE TECHNICAL MATERIEL CORPORATION to the user. This drawing is loaned for mutual assistance and is subject to recall at any time.

QTY. REQ.	ITEM	PART NO.	DESCRIPTION	SYMBOL
REF. LD2506				
S.D.				
LIST OF MATERIAL				
UNLESS OTHERWISE SPECIFIED DIMENSIONS ARE IN INCHES AND INCLUDE CHEMICALLY APPLIED OR PLATED FINISHES		FINAL APPROVAL <i>Joe Marco</i>	DATE 1-6-72	THE TECHNICAL MATERIEL CORP. MAMARONECK, NEW YORK
TOLERANCES ON		MÉCH. DES. <i>U300</i>	DATE 11-10-71	
DECIMALS ± .05		ELECT. DES.	DATE	
FRACTIONS ± 1/64		CHECKED <i>U300</i>	DATE 11-10-71	
.XX ± .01		DRAWN <i>GE</i>	DATE 11/2/71	PLATE REAR
.XXX ± .005		MATERIAL .081 THK ALUM 5052 H32		SIZE CODE IDENT NO. DWG NO.
FINISH S404 YEL. IRIDITE		C 82679		MS6323
SCALE 1:1		SHEET		OF