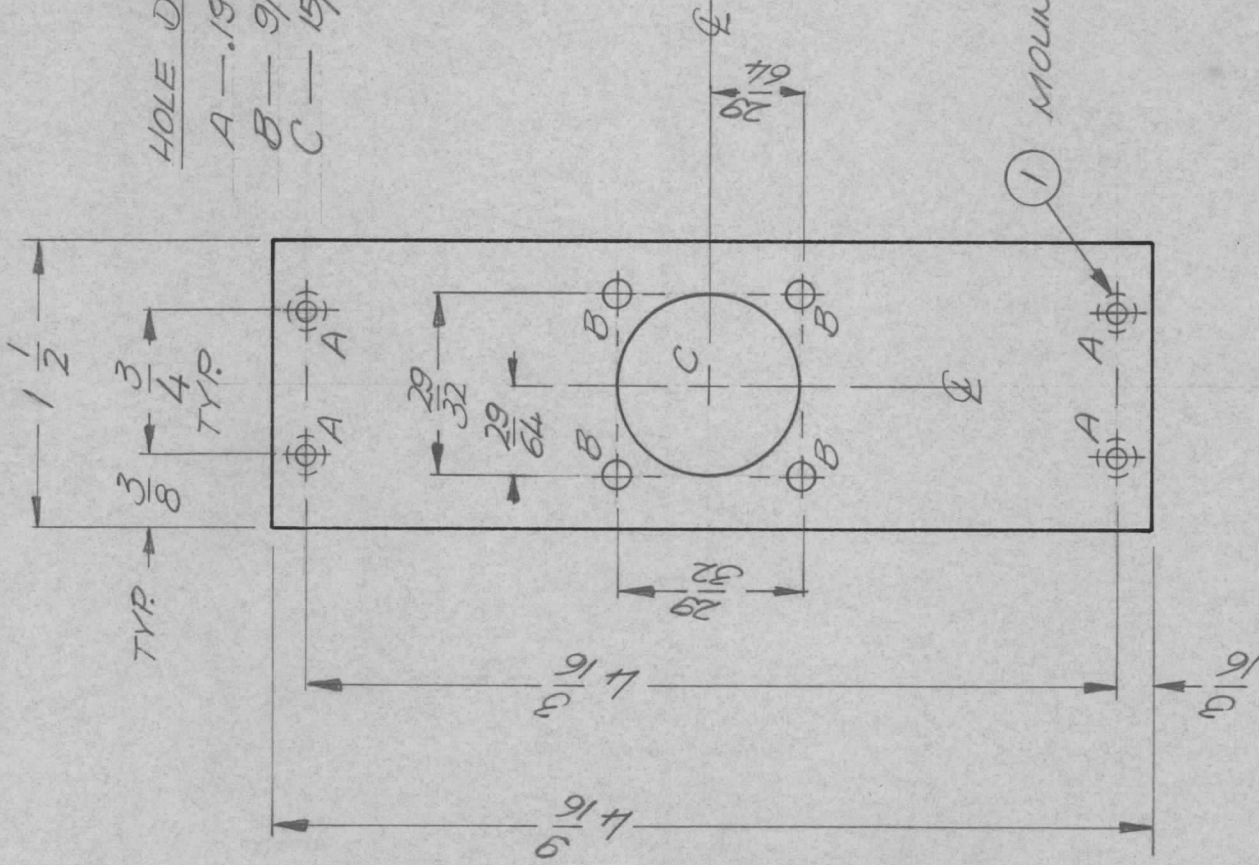


APPLICATION			REVISIONS						
QTY	MODEL USED ON	ASS'Y NO.	LTR	DESCRIPTION	DATE	E.M.N.NO	DRAFT	CHKD	APPD
1	METRJOKE	AX5157	Ø	ORIG RELEASE FOR PROD	1/13/70		CV		

HOLE DESCRIPTION REQ.  
 A — .191 — .194 DIA. — 4  
 B — 9/64 DIA. — 4  
 C — 15/16 DIA. — 1



REQ'D ITEM	PART NUMBER	DESCRIPTION	SYMBOL
4	NUT 129-06324	NUT, ROUND	A

LIST OF MATERIAL	
THE TECHNICAL MATERIEL CORP. MAMARONECK, NEW YORK	
BRKT. CONN. A.C.	

DATE	DATE	DATE	DATE	DATE
12 Jan 72	1-12-72			1/13/70

FINAL APPROVAL	MECH. DES.	ELECT. DES.	CHECKED	DRAWN
<i>[Signature]</i>	A.P.			GE

UNLESS OTHERWISE SPECIFIED DIMENSIONS ARE IN INCHES AND INCLUDE CHEMICALLY APPLIED OR PLATED FINISHES

DECIMALS  
 .X ± .05  
 .XX ± .01  
 .XXX ± .005

FRACTIONS  
 1/64  
 ANGLES  
 0° - 30°

MATERIAL .064 ALUM  
 5052 H32

FINISH 5404  
 YEL IRIDITE

NOTICE TO PERSONS RECEIVING THIS DRAWING  
 THE TECHNICAL MATERIEL CORPORATION claims proprietary right in the material disclosed hereon. This drawing is issued in confidence for engineering information only and may not be reproduced or used to manufacture anything shown hereon without permission from THE TECHNICAL MATERIEL CORPORATION to the user. This drawing is loaned for mutual assistance and is subject to recall at any time.

SIZE	CODE IDENT. NO.	DWG NO.	ISSUE
A	82679	MAS 6314	Ø

SCALE	SHEET	OF
1:1		