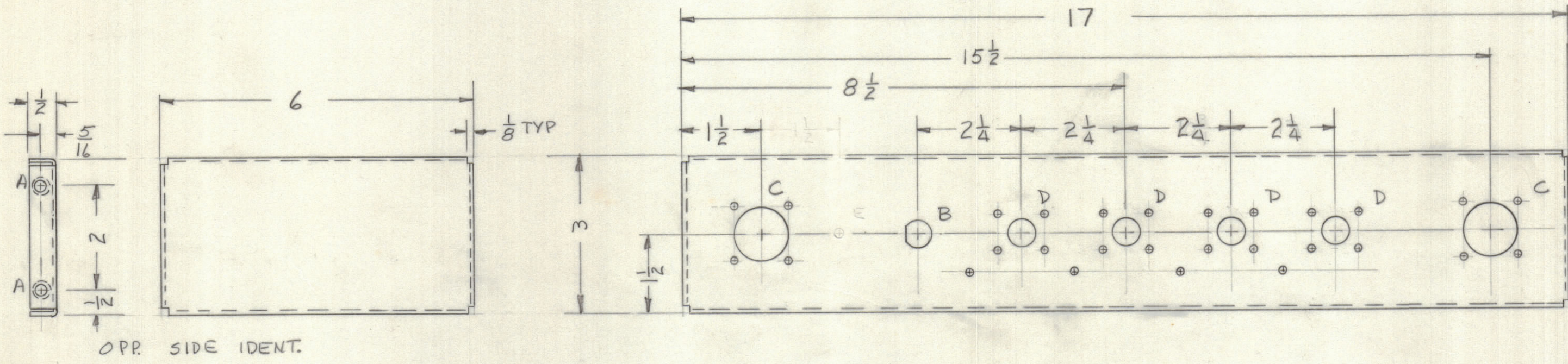
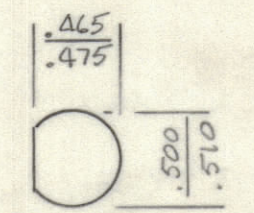


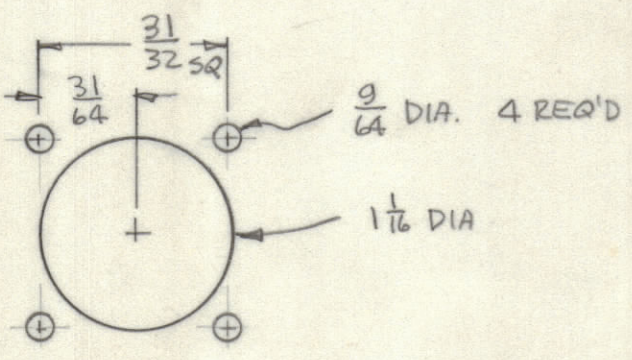
REVISIONS							
E.M.N.NO	DRAFT	CHKD	ZONE	LTR	DESCRIPTION	DATE	APPROVED
	W			Ø	ORIGINAL RELEASE FOR PRODUCTION	11/3/78	



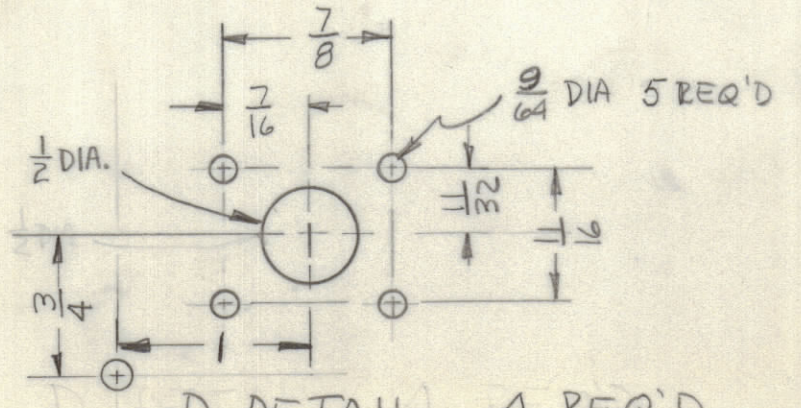
A ~ .191 - .194 DIA. 16 REQ'D
 E ~ .315 DIA. 1 REQ'D
 A ~ .191 - .194 DIA. 16 REQ'D



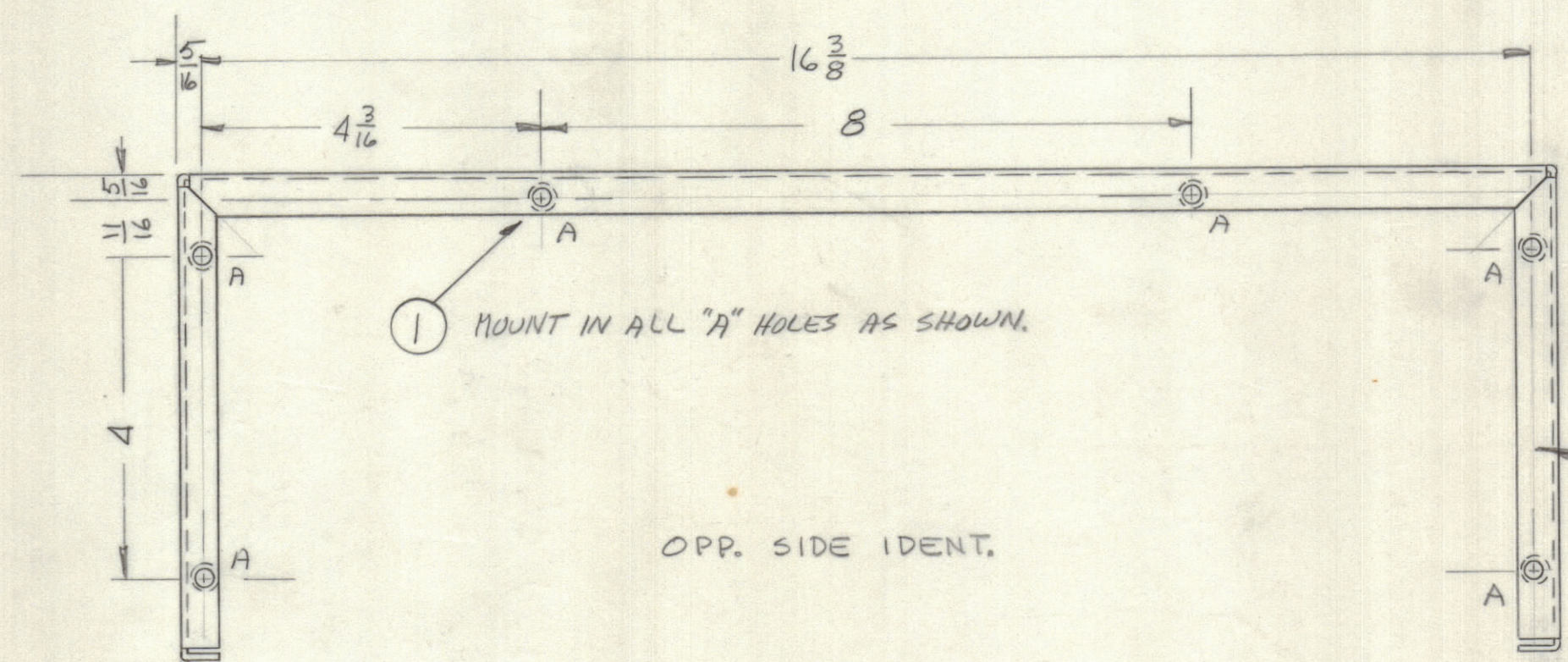
B DETAIL 1 REQ'D



C DETAIL 2 REQ'D



D DETAIL 4 REQ'D



MARK TMC PART NUMBER
 1/8 HIGH GOTHIC WITH LATEST
 REVISION LETTER

- UNLESS OTHERWISE SPECIFIED:
- USE MATERIAL THICKNESS FOR MAXIMUM RADIUS ON ALL BENDS.
 - ALL ANGULAR BENDS 90 DEGREES.
 - REMOVE ALL BURRS AND SHARP EDGES.
 - MOUNT INSERTS AFTER FINISHING.

1	SYM 1203	AX5159
QTY / UNIT	MODEL USED ON	ASSY NO.
APPLICATION		
CODE		
NOTICE TO PERSONS RECEIVING THIS DRAWING		
THE TECHNICAL MATERIEL CORPORATION claims proprietary right in the material disclosed herein. This drawing is issued in confidence for engineering information only and may not be reproduced or used to manufacture anything shown hereon without permission from THE TECHNICAL MATERIEL CORPORATION to the user. This drawing is loaned for mutual assistance and is subject to recall at any time.		

REF: LD2497

UNLESS OTHERWISE SPECIFIED
 DIMENSIONS ARE IN INCHES
 AND INCLUDE CHEMICALLY APPLIED
 OR PLATED FINISHES

TOLERANCES ON

DECIMALS	FRACTIONS
.X ± .05	± 1/64
.XX ± .01	ANGLES
.XXX ± .005	± 0° -30'

MATERIAL .064 ALUM
 5052-H32

FINISH
 S404 YEL IRID

16	1	NT129-0632-4	NUT, PLN SPLINE	A
QTY. REQ.	ITEM	PART NO.	DESCRIPTION	SYMBOL
LIST OF MATERIAL				
FINAL APPROVAL <i>JSM</i> DATE 6 Dec 71				
MECH. DES. <i>JSM</i> DATE 6 Dec 71				
ELECT. DES. DATE				
CHECKED DATE				
DRAWN <i>JSM</i> DATE 5 Nov 71				
THE TECHNICAL MATERIEL CORP. MAMARONECK, NEW YORK				
CHASSIS, MAIN				
SIZE	CODE	IDENT NO.	DWG NO.	ISSUE
C	82679		MS6295	Ø
SCALE		SHEET OF		

MS6295