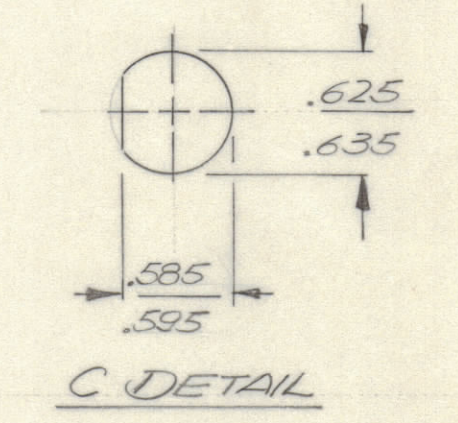
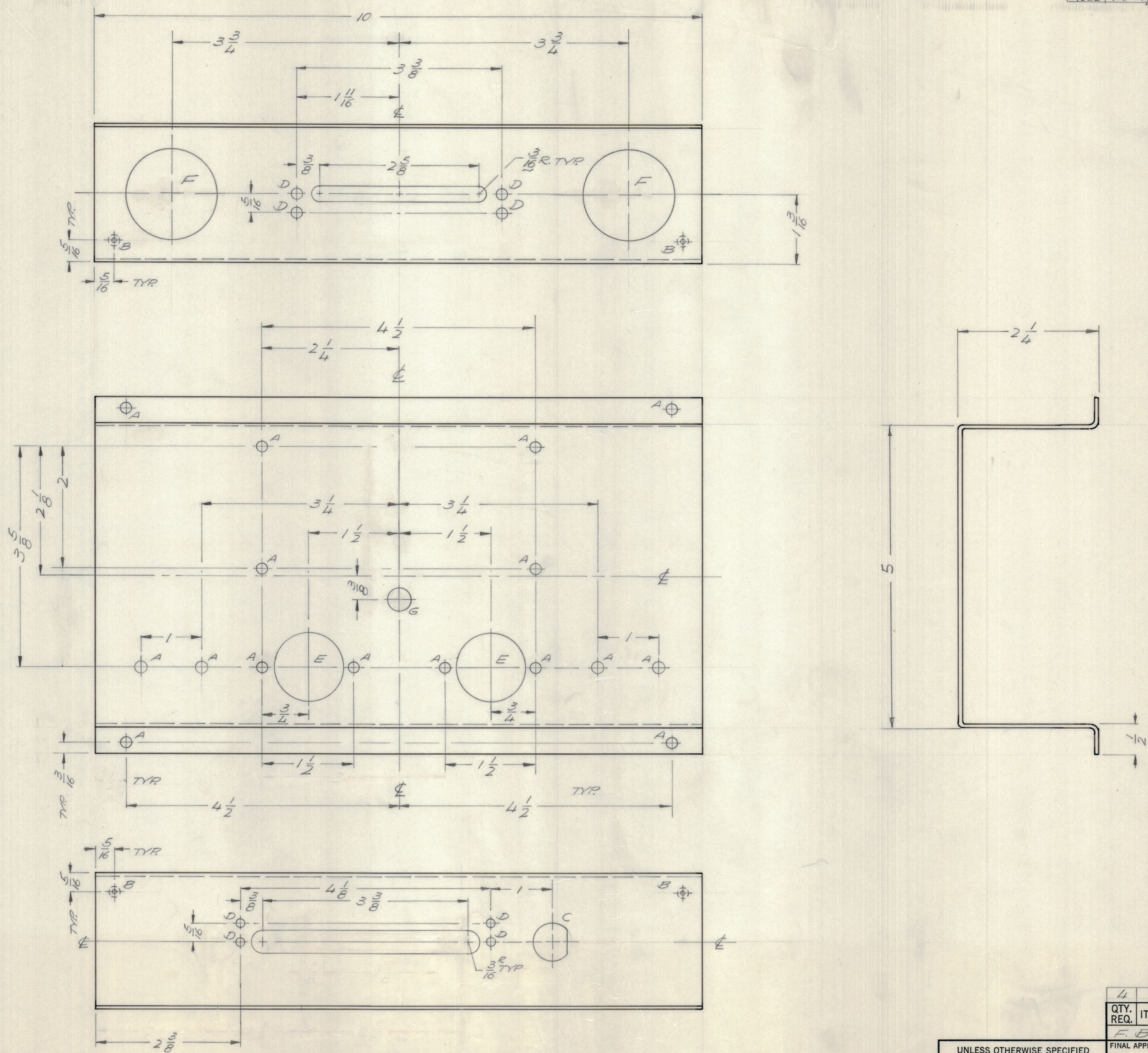


REVISIONS							
E.M.N.O	DRAFT	CHKD	ZONE	LTR	DESCRIPTION	DATE	APPROVED
21522	WB	WJB	A	A	ADD 5° DIM. ON PICTORIAL.	4/20/77	KP



HOLE DESCRIPTION REQ.

A	3/16 DIA.	16
B	.191-.194 DIA.	4
C	SEE DETAIL	1
D	9/64 DIA.	8
E	1/8 DIA.	2
F	1/2 DIA.	2
G	3/8 DIA.	1

- UNLESS OTHERWISE SPECIFIED:
1. USE MATERIAL THICKNESS FOR MAXIMUM RADIUS ON ALL BENDS.
 2. ALL ANGULAR BENDS 90 DEGREES.
 3. REMOVE ALL BURRS AND SHARP EDGES.
 4. MOUNT INSERTS AFTER FINISHING.

1	METRIOKE-5	BMA 485
QTY / UNIT	MODEL USED ON	ASS'Y NO.
APPLICATION		
CODE		
<small>NOTICE TO PERSONS RECEIVING THIS DRAWING</small> <small>THE TECHNICAL MATERIEL CORPORATION claims proprietary right in the material disclosed hereon. This drawing is issued in confidence for engineering information only and may not be reproduced or used to manufacture anything shown hereon without permission from THE TECHNICAL MATERIEL CORPORATION to the user. This drawing is loaned for mutual assistance and is subject to recall at any time.</small>		

UNLESS OTHERWISE SPECIFIED DIMENSIONS ARE IN INCHES AND INCLUDE CHEMICALLY APPLIED OR PLATED FINISHES	
TOLERANCES ON	
DECIMALS	FRACTIONS
.X ± .05	± 1/64
.XX ± .01	ANGLES
.XXX ± .005	± 0°-30'
MATERIAL .081 ALUM	
5052 H-32	
FINISH S404	
YEL. IRIDITE	

4	1	NT1290632-4	NUT, SPLINE	B
QTY. REQ.	ITEM	PART NO.	DESCRIPTION	SYMBOL
F. BUDETTI LIST OF MATERIAL				
FINAL APPROVAL		DATE	THE TECHNICAL MATERIEL CORP.	
MECH. DES.		DATE	MAMARONECK, NEW YORK	
ELECT. DES.		DATE	CHASSIS, CONTROL	
CHECKED		DATE		
DRAWN		DATE		
SIZE		CODE	IDENT NO.	DWG NO.
D		82679	115 6286	A
SCALE 1:1		SHEET		OF