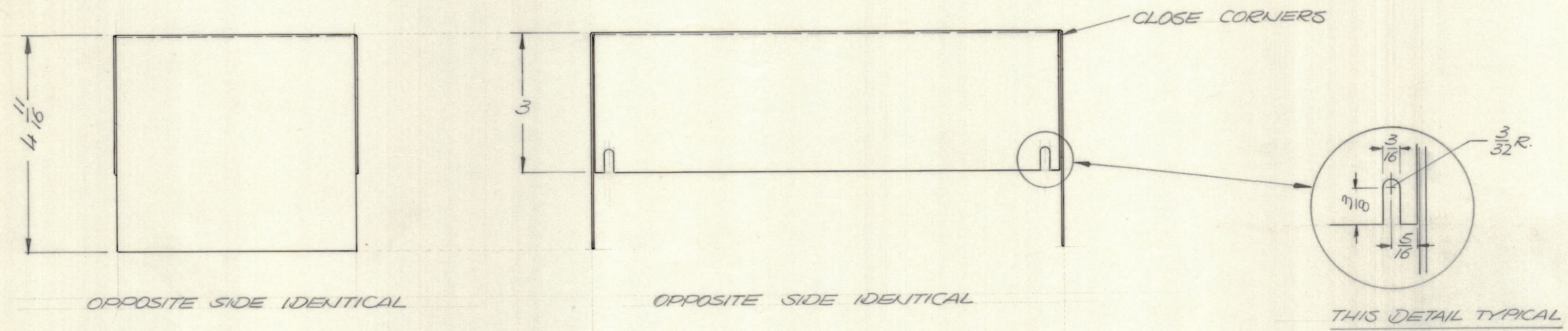
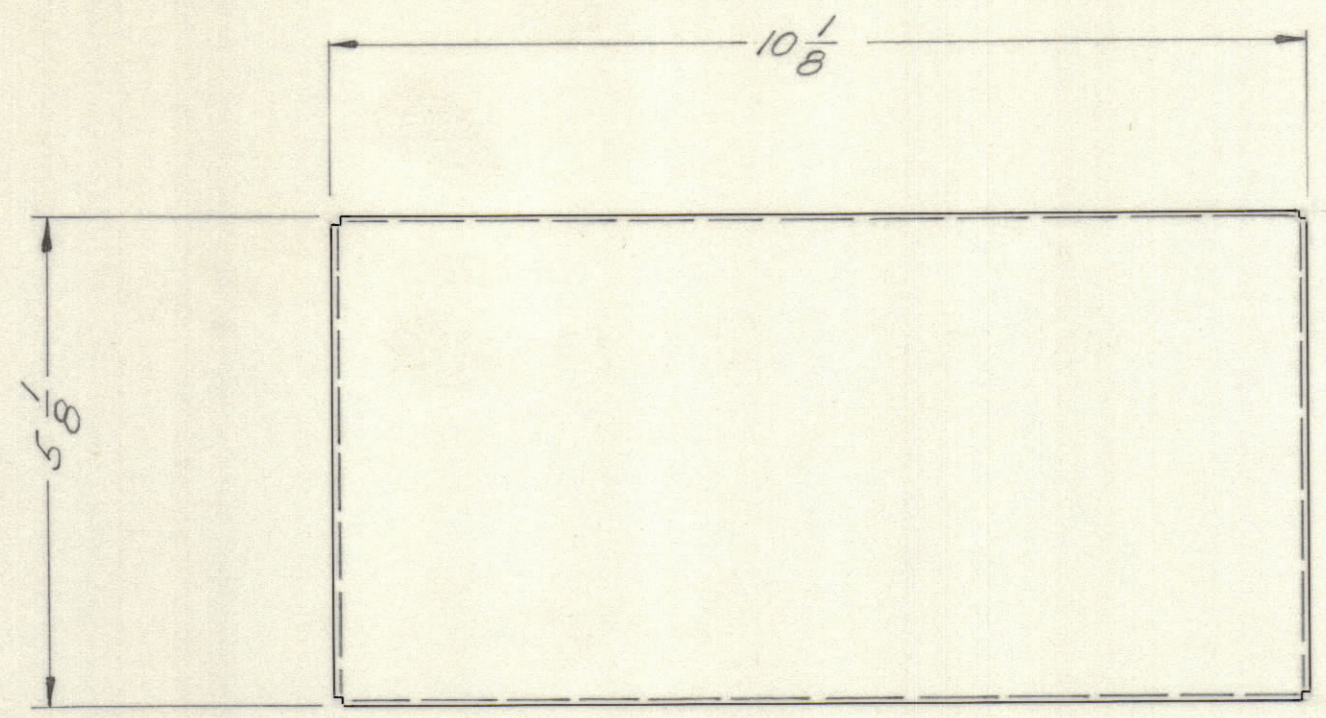


REVISIONS							
E.M.N.NO	DRAFT	CHKD	ZONE	LTR	DESCRIPTION	DATE	APPROVED
	01			Ø	ORIGINAL RELEASE FOR PRODUCTION	2/09/72	



OPPOSITE SIDE IDENTICAL

OPPOSITE SIDE IDENTICAL

THIS DETAIL TYPICAL

1	MFTR10KE-5	BMA 485
QTY / UNIT	MODEL USED ON	ASS'Y NO.
APPLICATION		
CODE		
NOTICE TO PERSONS RECEIVING THIS DRAWING		
THE TECHNICAL MATERIEL CORPORATION claims proprietary right in the material disclosed hereon. This drawing is issued in confidence for engineering information only and may not be reproduced or used to manufacture anything shown hereon without permission from THE TECHNICAL MATERIEL CORPORATION to the user. This drawing is loaned for mutual assistance and is subject to recall at any time.		

UNLESS OTHERWISE SPECIFIED DIMENSIONS ARE IN INCHES AND INCLUDE CHEMICALLY APPLIED OR PLATED FINISHES

TOLERANCES ON
 DECIMALS FRACTIONS
 .X ± .05 ± 1/64
 .XX ± .01 ± ANGLES
 .XXX ± .005 ± 0° -30'

MATERIAL .064 ALUM
5052 H32

FINISH S404
YEL. IRIDITE

QTY. REQ.	ITEM	PART NO.	DESCRIPTION	SYMBOL
F. BUDETTI LIST OF MATERIAL				
FINAL APPROVAL		DATE	THE TECHNICAL MATERIEL CORP.	
MECH. DES.		DATE	MAMARONECK, NEW YORK	
ELECT. DES.		DATE	COVER CONTROL CHASSIS	
CHECKED		DATE		
DRAWN		DATE		
MATERIAL			SIZE	ISSUE
FINISH			CODE IDENT NO.	DWG NO.
			C 82679	M56279
SCALE 1/2			SHEET	OF

M56279