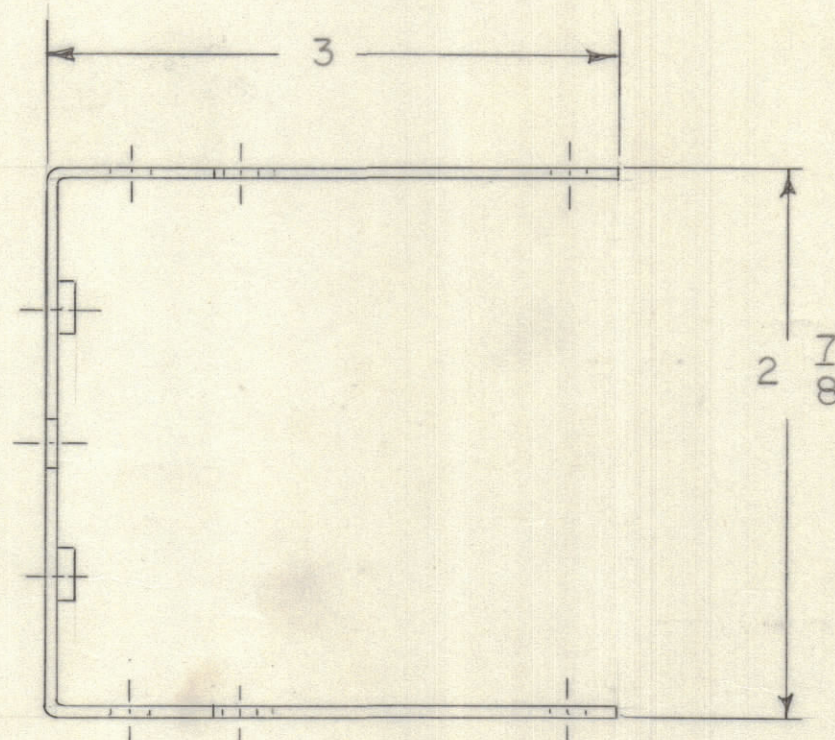
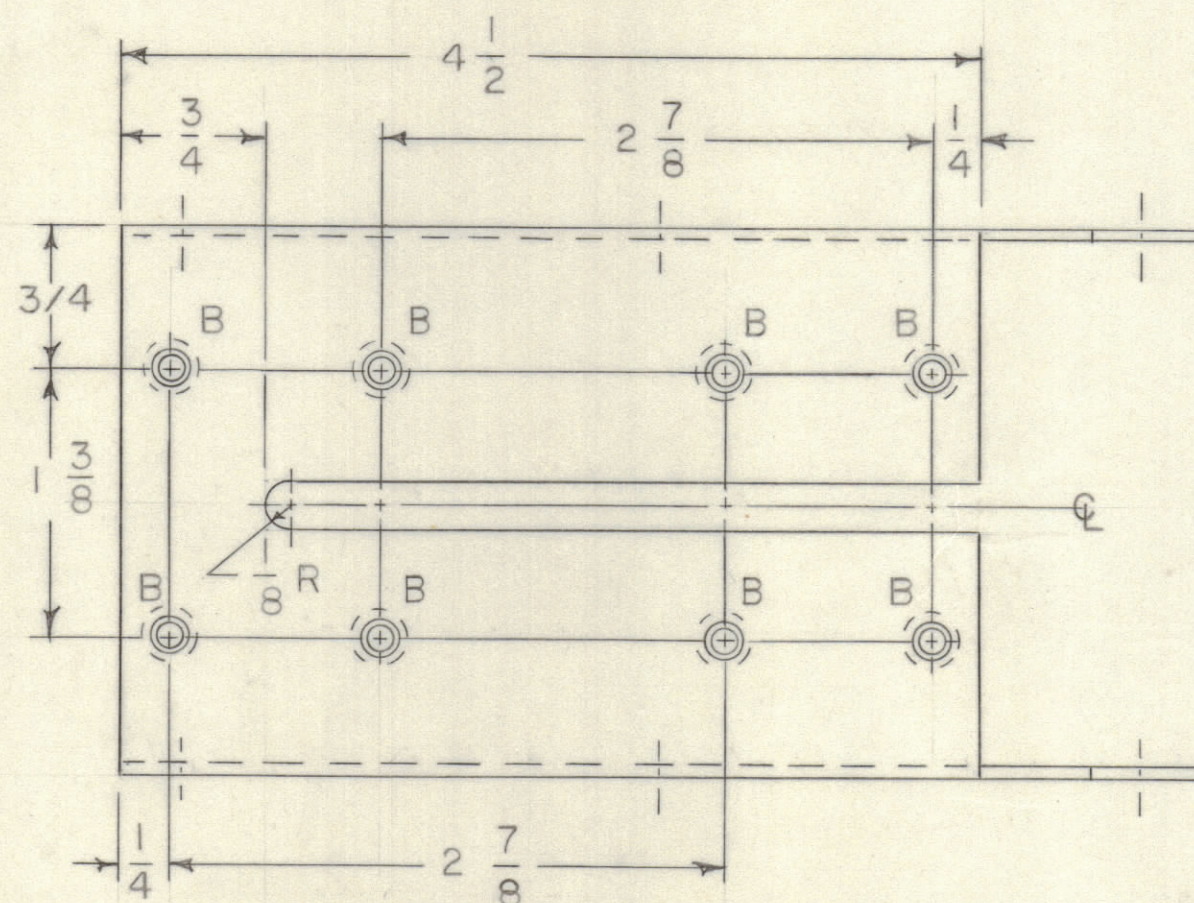
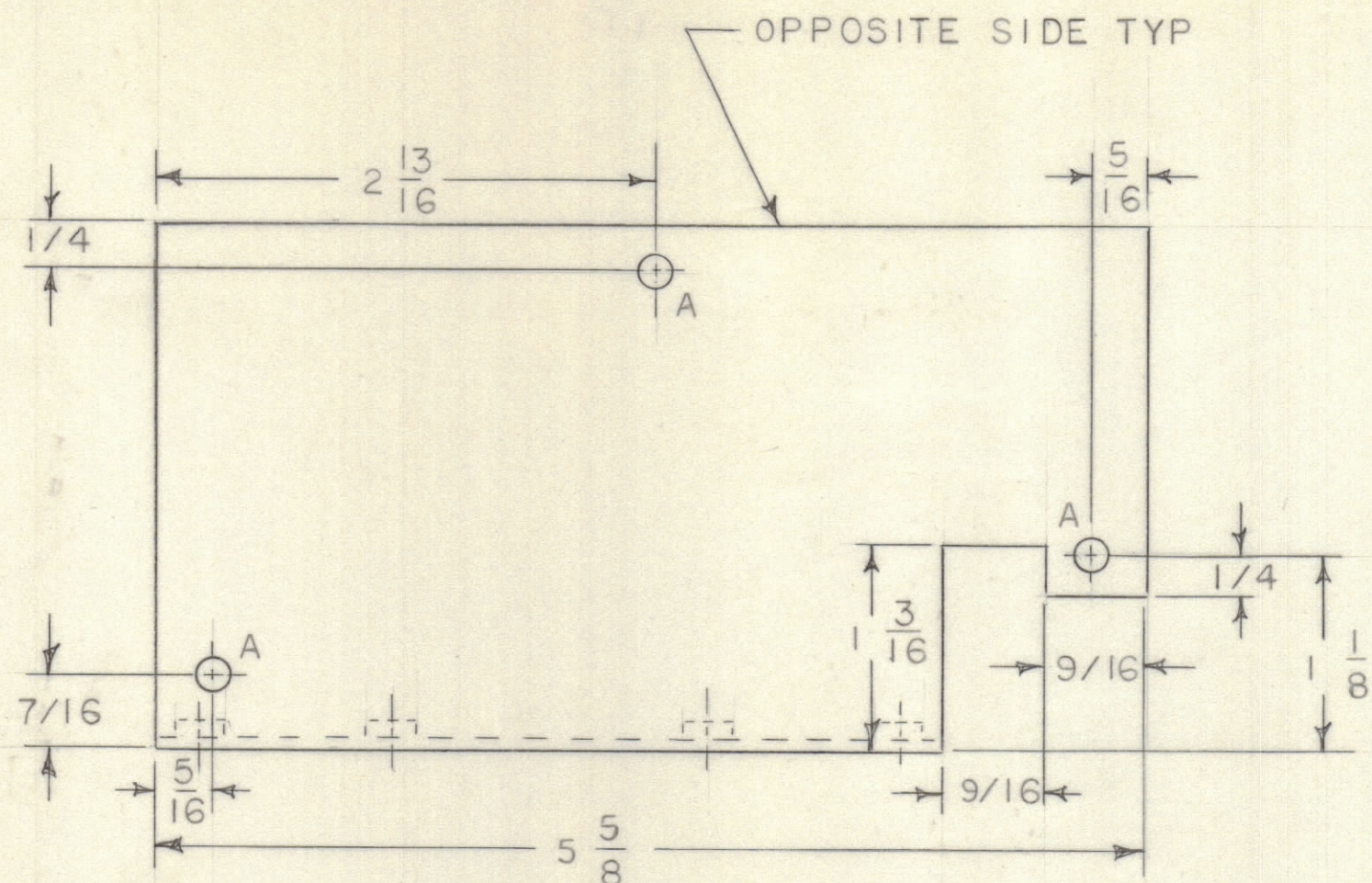


REVISIONS							
E.M.N.NO	DRAFT	CHKD	ZONE	LTR	DESCRIPTION	DATE	APPROVED
	RF			X	EXP RELEASE	8-5-71	
	W			Ø	ORIGINAL RELEASE FOR PRODUCTION	3/6/72	



HOLE	DESCRIPTION	REQD
A	3/16 DIA	6
B	.191-.194 DIA	8

UNLESS OTHERWISE SPECIFIED:

1. USE MATERIAL THICKNESS FOR MAXIMUM RADIUS ON ALL BENDS.
2. ALL ANGULAR BENDS 90 DEGREES.
3. REMOVE ALL BURRS AND SHARP EDGES.
4. MOUNT INSERTS AFTER FINISHING.

1	MAT-5	BMA-473
1	MFTR-IOKE-5	BMA-484
QTY / UNIT	MODEL USED ON	ASS'Y NO.
APPLICATION		
CODE		

NOTICE TO PERSONS RECEIVING THIS DRAWING
 THE TECHNICAL MATERIEL CORPORATION claims proprietary right in the material disclosed hereon. This drawing is issued in confidence for engineering information only and may not be reproduced or used to manufacture anything shown hereon without permission from THE TECHNICAL MATERIEL CORPORATION to the user. This drawing is loaned for mutual assistance and is subject to recall at any time.

UNLESS OTHERWISE SPECIFIED DIMENSIONS ARE IN INCHES AND INCLUDE CHEMICALLY APPLIED OR PLATED FINISHES

TOLERANCES ON	
DECIMALS	FRACTIONS
.X ± .05	± 1/64
.XX ± .01	ANGLES
.XXX ± .005	± 0° -30'

MATERIAL .063 THK.
 ALUM 5052-H32
 FINISH S404
 IRIDITE

8	1	NT129-632-4	NUT, ROUND, SWAGE TYPE	B
QTY. REQ.	ITEM	PART NO.	DESCRIPTION	SYMBOL

FB LIST OF MATERIAL

FINAL APPROVAL	DATE
MECH. DES.	DATE
ELECT. DES.	DATE
CHECKED	DATE
DRAWN	DATE
R FORLANO	8-5-71

THE TECHNICAL MATERIEL CORP.
 MAMARONECK, NEW YORK

COVER SWITCH MTG.

SIZE	CODE IDENT NO.	DWG NO.	ISSUE
C	82679	MS 6277	Ø
SCALE 1/1		SHEET 1 OF 1	

MS 6277

B

A