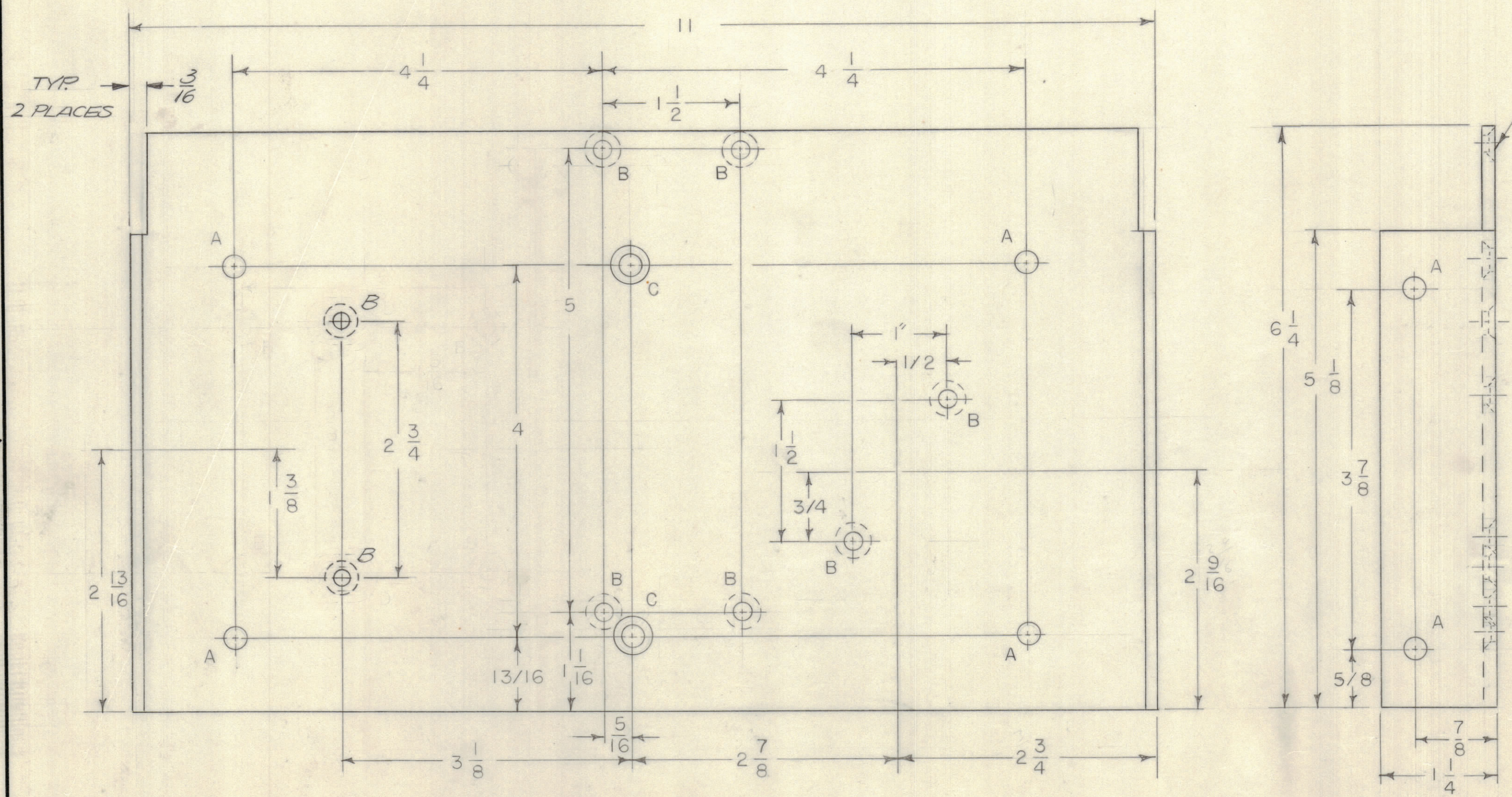


REVISIONS							
E.M.N.NO	DRAFT	CHKD	ZONE	LTR	DESCRIPTION	DATE	APPROVED
	RF			X	EXP RELEASE	9-3-71	
	CJ			Ø	ORIGINAL RELEASE FOR PRODUCTION	3/6/72	
20705	GE	g		A	DELE (2) D' HLS ADD (2) B HLS	5/25/72	eg



HOLE	DESCRIPTION	REQD
A	15/64 DIA	8
B	1032 C'SINK FROM FAR SIDE	8
C	1032 C'SINK	2

- UNLESS OTHERWISE SPECIFIED:
1. USE MATERIAL THICKNESS FOR MAXIMUM RADIUS ON ALL BENDS.
 2. ALL ANGULAR BENDS 90 DEGREES.
 3. REMOVE ALL BURRS AND SHARP EDGES.
 4. MOUNT INSERTS AFTER FINISHING.

1	MAT-5	BMA 474
1	MFTR-IOKE-5	BMA 484
QTY / UNIT	MODEL USED ON	ASS'Y NO.
APPLICATION		
	CODE	

NOTICE TO PERSONS RECEIVING THIS DRAWING
 THE TECHNICAL MATERIEL CORPORATION claims proprietary right in the material disclosed hereon. This drawing is issued in confidence for engineering information only and may not be reproduced or used to manufacture anything shown hereon without permission from THE TECHNICAL MATERIEL CORPORATION to the user. This drawing is loaned for mutual assistance and is subject to recall at any time.

UNLESS OTHERWISE SPECIFIED DIMENSIONS ARE IN INCHES AND INCLUDE CHEMICALLY APPLIED OR PLATED FINISHES

TOLERANCES ON
 DECIMALS .X ± .05
 .XX ± .01
 .XXX ± .005
 FRACTIONS ± 1/64
 ANGLES ± 0° -30'

MATERIAL 1/8 THK
 ALUM 5052 H32
 FINISH S404
 IRIDITE

QTY. REQ.	ITEM	PART NO.	DESCRIPTION	SYMBOL			
LIST OF MATERIAL							
FINAL APPROVAL		DATE	THE TECHNICAL MATERIEL CORP. MAMARONECK, NEW YORK PLATE, BOTTOM				
MECH. DES.		DATE					
ELECT. DES.		DATE					
CHECKED		DATE					
DRAWN		DATE					
R FORLANO		9-3-71	SIZE	CODE	IDENT NO.	DWG NO.	ISSUE
C		82679			MS 6276		A
SCALE 1/1			SHEET 1 OF 1				