

APPLICATION

QTY	MODEL USED ON	ASS'Y NO.	LTR
2	MAT-5	BHA476	Ø
2	MFRIOKE5	BMA485	

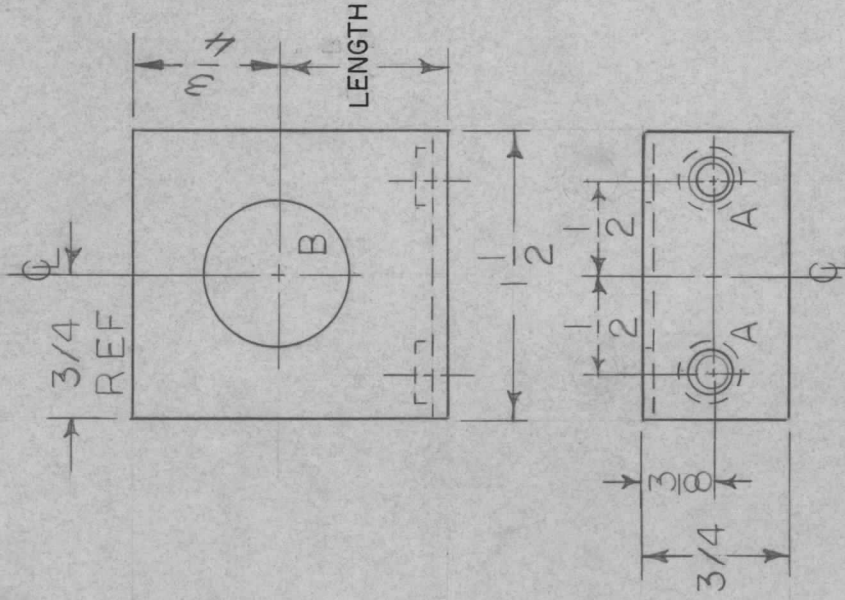
REVISIONS

DESCRIPTION	DATE	E.M.N.NO	DRAFT	CHKD	APPD
ORIG RELEASE FOR PROD	3/6/76		RF		

TMC P/N TO BE AS FOLLOWS

MS 6269-0.875

BASIC NO. LENGTH IN INCHES



HOLE	DESCRIPTION	REQD
A	.191-.194 DIA	2
B	3/4 DIA	1

UNLESS OTHERWISE SPECIFIED:

1. USE MATERIAL THICKNESS FOR MAXIMUM RADIUS ON ALL BENDS.
2. ALL ANGULAR BENDS 90 DEGREES.
3. REMOVE ALL BURRS AND SHARP EDGES.
4. MOUNT INSERTS AFTER FINISHING.

2	1	NT129-632-4	NUT ROUND SWAGE TYPE	A	SYM.
REQ'D ITEM	PART NUMBER	DESCRIPTION			

LIST OF MATERIAL

F.B.		THE TECHNICAL MATERIEL CORP.	
FINAL APPROVAL	DATE	MAMARONECK, NEW YORK	
Mech. DES.	DATE		
ELECT. DES.	DATE		
CHECKED	DATE		
DRAWN	DATE	BRKLT, CAPACITOR MTG,	
R FORLANO	9/15/71		

UNLESS OTHERWISE SPECIFIED DIMENSIONS ARE IN INCHES AND INCLUDE CHEMICALLY APPLIED OR PLATED FINISHES

DECIMALS: .X ± .05, .XX ± .01, .XXX ± .005

FRACTIONS: 1/64

TOLS. ANGLES: 0°-30°

MATERIAL .081 THK
ALUM 5052-H32
FINISH
S404 IRIDITE

SIZE	CODE IDENT. NO.	DWG NO.	ISSUE
A	82679	MS 6269	Ø
SCALE	/ /	SHEET	OF

NOTICE TO PERSONS RECEIVING THIS DRAWING

THE TECHNICAL MATERIEL CORPORATION claims proprietary right in the material disclosed hereon. This drawing is issued in confidence for engineering information only and may not be reproduced or used to manufacture anything shown hereon without permission from THE TECHNICAL MATERIEL CORPORATION to the user. This drawing is loaned for mutual assistance and is subject to recall at any time.